

Converting Colors

HunterLab(79.8067, 5.8000,
9.1353)

Have a look what the booklet for
HunterLab(79.8067, 5.8000, 9.1353)
contains.

HunterLab(79.8049, 5.8024, 9.1340)	3
<i>Conversions</i>	4
<i>Details</i>	6
<i>Harmonies</i>	12
<i>Previews</i>	24
<i>Color Blindness Simulation</i>	28
<i>CSS Examples</i>	31

Color

**HunterLab(79.8049, 5.8024,
9.1340)**

Conversions

Conversions Part 1

Format	Color
Hex	E9CAC7
RGB	233, 202, 199
RGB Percent	91%, 79%, 78%
CMY	0.0863, 0.2078, 0.2196
CMYK	0.00, 0.13, 0.15, 0.09
HSL	5°, 44%, 85%
HSV	5°, 15%, 91%
XYZ	65.0336, 63.6882, 62.8983
YIQ	210.9270, 19.4390, 5.6390

Conversions

Conversions Part 2

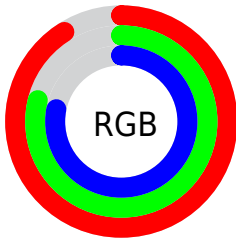
Format	Color
R _Y B	233, 202, 199
Decimal	15321799
CIE Lab	83.80, 10.40, 5.51
CIE LCh	84, 11.772, 27.901
Yxy	63.6911, 0.3394, 0.3324
Android (android.graphics.Color)	4293511879 (0xFFE9CAC7)
YUV	210.9270, -5.8800, 19.3580
Hunter-Lab	79.8049, 5.8024, 9.1340

Details

The HunterLab color $79.8049, 5.8024, 9.1340$ is a light color, and the websafe version is hex FFCCCC . A complement of this color would be $86.3813, -13.6315, 0.0755$, and the grayscale version is $80.6984, -4.3059, 4.3845$.

A 20% lighter version of the original color is $100.0000, -5.3358, 5.4332$, and $57.0712, 5.9413, 7.4415$ is the 20% darker color. If you saturate the color by 10%, you get $73.0743, 13.5228, 12.0641$, and if you desaturate by 10%, it is $86.9030, -1.5548, 6.2285$.

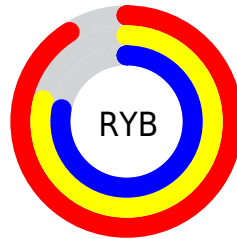
Distribution



Red (91%)

Green (79%)

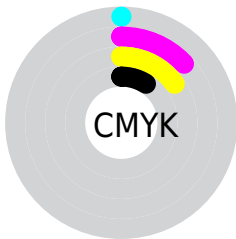
Blue (78%)



Red (91%)

Yellow (79%)

Blue (78%)

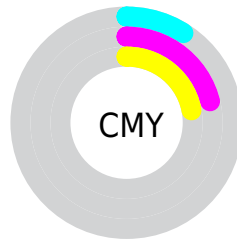


Cyan (0%)

Magenta (13%)

Yellow (15%)

Black (9%)



Cyan (9%)

Magenta (21%)

Yellow (22%)

Brightness & Saturation Gradients

These gradients show how the HunterLab color 79.8049, 5.8024, 9.1340 changes by changing the brightness by 10 percent. The first figure shows a shift by +10% for each color and the second figure -10%.

Similar to the brightness gradients but the following saturation gradients show a change of the HunterLab color 79.8049, 5.8024, 9.1340 by changing the saturation by 10% instead.

79.8049, 5.8024,
9.1340

79.8049, 5.8024,
9.1340

209.3020, 2.5404,
18.1020

68.1179, 5.9324,
8.2363

104.9599, 5.3746,
10.9910

57.0631, 6.0044,
7.3558

118.3719, 5.0898,
11.9483

46.6809, 6.0091,
6.4924

132.3109, 4.7610,
12.9253

37.0182, 5.9378,
5.6442

146.7577, 4.3911,
13.9220

28.1331, 5.7782,
4.8072

161.6952, 3.9822,
14.9381

20.1008, 5.5137,
3.9748

177.1077, 3.5363,

13.0238, 5.1188,

15.9737

3.1333

192.9810, 3.0552,
17.0284

6.4900, 6.6383,
3.8716

0.0000, NaN, NaN

79.8049, 5.8024,
9.1340

79.8049, 5.8024,
9.1340

73.0743, 13.5228,
12.0641

86.9030, -1.5548,
6.2285

66.7686, 21.6195,
14.9892

94.3126, -8.5715,
3.3547

60.9667, 30.0458,
17.8614

98.0121, -12.3216,
2.9483

55.7604, 38.6676,
20.5951

■ 51.2540, 47.2128,
23.0588

■ 47.5542, 55.2335,
25.0767

■ 44.7501, 62.1298,
26.4616

■ 42.8823, 67.2871,
27.0938

■ 42.2434, 69.1716,
27.2412

Harmonies

Analogous

The Analogous color harmony consists of three colors that are next to each other on the color wheel.



79.8067, 7.1516, 3.9559



79.8049, 5.8024, 9.1340



79.8067, 1.7301, 12.7922

Triad

The Triadic color harmony groups three colors that are evenly spaced from another and form a triangle on the color wheel.



79.8067, 5.8000, 9.1353



79.8067, -13.4620, 9.7609



79.8067, -4.6692, -6.9612

Complementary

The Complementary color scheme is a pair of colors which are on the opposite of each other on the color wheel.



79.8049, 5.8024, 9.1340



86.3813, -13.6315, 0.0755

Split Complementary

Split-complementary colors differ from the complementary color scheme. The scheme consists of three colors, the original color and two neighbors of the complement color.



79.8067, -10.0834, -5.1422



79.8049, 5.8024, 9.1340



79.8067, -15.0693, 4.7303

Square

The Square scheme is like the rectangle color scheme, but the four colors are evenly spaced on the color wheel.



79.8067, 5.8000, 9.1353



79.8067, -9.3976, 13.1349



79.8067, -13.8500, -0.7639



79.8067, 1.0057, -5.5766

Rectangle

The Rectangle color scheme consists of four colors that form a rectangle on the color wheel.



79.8049, 5.8024, 9.1340



79.8067, -1.9195, 14.0066



79.8067, -13.8500, -0.7639



79.8067, -6.5789, -6.7016

Sweetspot

The Sweet Spot groups the original color and five complimentary colors.



79.8067, 5.8000, 9.1353



96.7317, -2.1769, 6.7167



79.9337, 12.7146, -6.1430



44.4710, -0.7292, 3.2195

0.0000, NaN, NaN



46.2646, -2.4686, 2.5136

Same Dimension

The Same Dimension uses a secret algorithm to generate beautiful new colors.



79.8067, 5.8000, 9.1353



85.7527, 9.3692, 11.2528



84.8670, -2.9655, 14.4935



39.0742, 0.9315, 3.5807



31.9379, 51.7132, 20.5853



9.3520, 13.1928, 5.9936

Inverse Universe

The Inverse Universe completely reimagines the original color for something new.



86.3813, -13.6315, 0.0755



94.7362, -17.2159, -1.1350



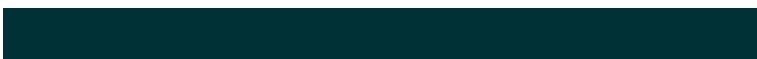
81.0546, -5.0919, -6.5346



41.0864, -5.0079, 0.8098



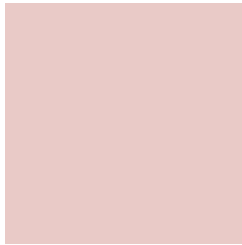
55.0159, -25.5141, -13.6875



15.6320, -7.4179, -3.5255

Previews

White Background



This preview shows how the HunterLab color 79.8049, 5.8024, 9.1340 looks on a white background.

Color Contrast Check

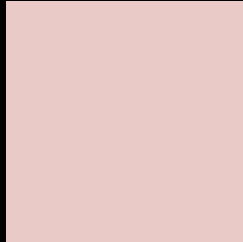
Large Text (above 18pt) WCAG AA × Fail

Any Text WCAG AA × Fail

Large Text (above 18pt) WCAG AAA × Fail

Any Text WCAG AAA × Fail

Black Background



This preview shows how the HunterLab color 79.8049, 5.8024, 9.1340 looks on a black background.

Color Contrast Check

Large Text (above 18pt) WCAG AA ✓ Pass

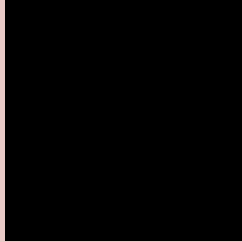
Any Text WCAG AA ✓ Pass

Large Text (above 18pt) WCAG AAA ✓ Pass

Any Text WCAG AAA ✓ Pass

If you want to check with other color combinations, try the [Color Contrast Checker](#).

HunterLab 79.8049, 5.8024, 9.1340 Background



This preview shows how black text looks on a background with the HunterLab color 79.8049, 5.8024, 9.1340.



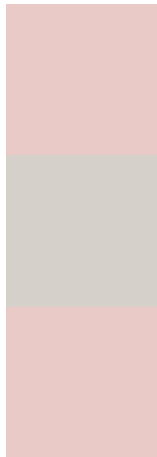
This preview shows how white text looks on a background with the HunterLab color 79.8049, 5.8024,

9.1340.

Color Blindness Simulation

Color vision deficiency is a very complex topic, and I could not describe the different causes any better than Wikipedia does, so if you want to learn more, you should check out their [article about color blindness](#).

Dichromacy



Original Color

79.8049, 5.8024, 9.1340

Protanopia

79.7948, -3.3009, 7.5930

Deuteranopia

79.8049, 5.8024, 9.1340



Tritanopia

79.9231, 10.1763, 1.7336

Trichromacy



Original Color

79.8049, 5.8024, 9.1340

Protanomaly

79.8322, -0.1106, 8.1509

Deuteranomaly

79.8049, 5.8024, 9.1340

Tritanomaly

79.9182, 8.2867, 4.6387

Monochromacy



Original Color

79.8049, 5.8024, 9.1340

Achromatopsia

80.7097, -4.3065, 4.3851

Achromatomaly

80.4219, -0.8365, 6.0208

CSS Examples

Text

The CSS property to change the color of the text to HunterLab 79.8049, 5.8024, 9.1340 is called "color". The color property can be set on classes, ids or directly on the HTML element.

This example shows how text in the color `rgb(233, 202, 199)` looks like.

```
.text, #text, p{  
    color:rgb(233, 202, 199)  
}
```

If you want to add a text shadow in that color use the text-shadow property, you can generate a text shadow directly with our [CSS Text Shadow Generator](#).

Here you see how black text with a 4 pixel rgb(233, 202, 199) colored shadow looks like.

```
.shadow{ text-shadow: 4px 4px 2px rgb(233, 202, 199) }
```

Border

The CSS property to change the border of an element to HunterLab 79.8049, 5.8024, 9.1340 is called "border". The border property can be set on classes, ids or directly on the HTML element.

This example shows the color as border, it can be applied via the CSS property "border" or "border-color".

```
.border, #border, table{ border:4px solid rgb(233, 202, 199) }
```


If only the border color should be changed use the property `border-color`.

```
.border{ border-color:rgb(233, 202, 199) }
```

If you want to add a box shadow in that color use:

Here you see how a box with a 4 pixel `rgb(233, 202, 199)` colored shadow looks like.

```
.boxshadow{ -moz-box-shadow:4px 4px 4px  
4px rgb(233, 202, 199); -webkit-box-  
shadow:4px 4px 4px 4px rgb(233, 202, 199);  
box-shadow:4px 4px 4px 4px rgb(233, 202,  
199) }
```

Background

The CSS property to change the background color of an element to HunterLab 79.8049, 5.8024, 9.1340 is called "background". The background property can be set on classes, ids or directly on the HTML element.

```
.background, #background, body{  
background: rgb(233, 202, 199) }
```

If only the background color should be changed can be used:

```
.background{ background-color: rgb(233,  
202, 199) }
```

This example shows the color as background, it is applied via the CSS property "background".

To optimize and compress your CSS code, you can use our [online CSS compressor and optimizer](#) based on csstidy. If you want to create a linear or radial gradient as background or border, check our [CSS Gradient Generator](#).

Hey! You found this booklet interesting? Support Converting Colors with the new Membership Option!

The pro membership hides all ads, plus gives you double the colors in the color bucket, and more awesome pro features!

[Learn more, Memberships starting at \\$2.50/m!](#)

**Follow me
on Twitter!**

@ConvertingColor