

Converting Colors

HunterLab(79.8143, 6.6865,
2.5353)

Have a look what the booklet for
HunterLab(79.8143, 6.6865, 2.5353)
contains.

HunterLab(79.8143, 6.6865, 2.5353)	3
<i>Conversions</i>	4
<i>Details</i>	6
<i>Harmonies</i>	12
<i>Previews</i>	24
<i>Color Blindness Simulation</i>	28
<i>CSS Examples</i>	31

Color

**HunterLab(79.8143, 6.6865,
2.5353)**

Conversions

Conversions Part 1

Format	Color
Hex	E5CAD5
RGB	229, 202, 213
RGB Percent	90%, 79%, 84%
CMY	0.1020, 0.2078, 0.1647
CMYK	0.00, 0.12, 0.07, 0.10
HSL	336°, 34%, 85%
HSV	336°, 12%, 90%
XYZ	65.4439, 63.7032, 71.7975
YIQ	211.3270, 12.5610, 9.1450

Conversions

Conversions Part 2

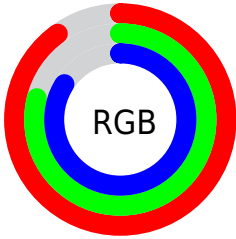
Format	Color
R _Y B	229, 202, 213
Decimal	15059669
CIE Lab	83.81, 11.29, -1.99
CIE LCh	84, 11.468, 350.009
Yxy	63.7060, 0.3257, 0.3170
Android (android.graphics.Color)	4293249749 (0xFFE5CAD5)
YUV	211.3270, 0.8248, 15.4992
Hunter-Lab	79.8143, 6.6865, 2.5353

Details

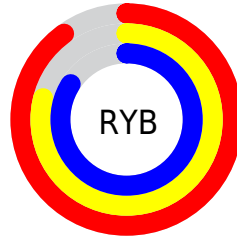
The HunterLab color $79.8143, 6.6865, 2.5353$ is a light color, and the websafe version is hex FFCCCC . A complement of this color would be $85.8248, -14.9346, 6.7985$, and the grayscale version is $80.8448, -4.3137, 4.3925$.

A 20% lighter version of the original color is $100.0000, -5.3358, 5.4332$, and $57.0374, 6.5728, 1.6360$ is the 20% darker color. If you saturate the color by 10%, you get $72.8589, 16.5865, 1.0029$, and if you desaturate by 10%, it is $87.1666, -3.0119, 4.4368$.

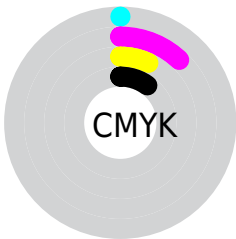
Distribution



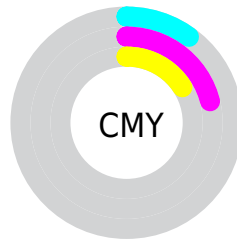
- Red (90%)
- Green (79%)
- Blue (84%)



- Red (90%)
- Yellow (79%)
- Blue (84%)



- Cyan (0%)
- Magenta (12%)
- Yellow (7%)
- Black (10%)



- Cyan (10%)
- Magenta (21%)
- Yellow (16%)

Brightness & Saturation Gradients

These gradients show how the HunterLab color 79.8143, 6.6865, 2.5353 changes by changing the brightness by 10 percent. The first figure shows a shift by +10% for each color and the second figure -10%.

Similar to the brightness gradients but the following saturation gradients show a change of the HunterLab color 79.8143, 6.6865, 2.5353 by changing the saturation by 10% instead.

79.8143, 6.6865,
2.5353

79.8143, 6.6865,
2.5353

209.3149, 3.7313,
8.9140

68.1268, 6.7759,
1.9912

104.9702, 6.3355,
3.7368

57.0715, 6.8050,
1.4852

118.3825, 6.0867,
4.3876

46.6888, 6.7646,
1.0219

132.3220, 5.7929,
5.0700

37.0255, 6.6452,
0.6051

146.7692, 5.4566,
5.7826

28.1397, 6.4344,
0.2397

161.7071, 5.0804,
6.5244

20.1067, 6.1147,
-0.0673

177.1199, 4.6663,

13.0290, 5.6600,

7.2941

-0.3058

192.9935, 4.2161,
8.0910

6.4966, 7.2285,
-0.9158

0.0000, NaN, NaN

79.8143, 6.6865,
2.5353

79.8143, 6.6865,
2.5353

72.8589, 16.5865,
1.0029

87.1666, -3.0119,
4.4368

66.3650, 26.6400,
-0.0703

94.8544, -12.4921,
6.6299

60.4206, 36.7099,
-0.5664

97.6299, -13.7658,
3.1179

55.1279, 46.5330,
-0.3521

97.6720, -13.5314,
2.5183

■ 50.6017, 55.6686,
0.7016

■ 46.9550, 63.4893,
2.6764

■ 44.2732, 69.2818,
5.5433

■ 42.5740, 72.5053,
9.1076

■ 41.7773, 73.4484,
12.2405

Harmonies

Analogous

The Analogous color harmony consists of three colors that are next to each other on the color wheel.



79.8161, 4.2043, -2.5633



79.8143, 6.6865, 2.5353



79.8161, 6.1694, 7.7897

Triad

The Triadic color harmony groups three colors that are evenly spaced from another and form a triangle on the color wheel.



79.8161, 6.6843, 2.5367



79.8161, -7.9348, 13.4307



79.8161, -11.1040, -3.9577

Complementary

The Complementary color scheme is a pair of colors which are on the opposite of each other on the color wheel.



79.8143, 6.6865, 2.5353



85.8248, -14.9346, 6.7985

Split Complementary

Split-complementary colors differ from the complementary color scheme. The scheme consists of three colors, the original color and two neighbors of the complement color.



79.8161, -14.1858, 0.7387



79.8143, 6.6865, 2.5353



79.8161, -12.3915, 10.6855

Square

The Square scheme is like the rectangle color scheme, but the four colors are evenly spaced on the color wheel.



79.8161, 6.6843, 2.5367



79.8161, -2.3756, 13.8386



79.8161, -14.6504, 6.1112



79.8161, -6.1331, -6.4810

Rectangle

The Rectangle color scheme consists of four colors that form a rectangle on the color wheel.



79.8143, 6.6865, 2.5353



79.8161, 4.2019, 10.6878



79.8161, -14.6504, 6.1112



79.8161, -12.3893, -2.5661

Sweetspot

The Sweet Spot groups the original color and five complimentary colors.



79.8161, 6.6843, 2.5367



96.5819, -0.9755, 4.5012



79.2264, 5.7836, -6.5556



44.3890, -0.0699, 2.0042

0.0000, NaN, NaN



46.2646, -2.4686, 2.5136

Same Dimension

The Same Dimension uses a secret algorithm to generate beautiful new colors.



79.8161, 6.6843, 2.5367



88.3239, 10.0985, 2.4281



80.1435, 3.6926, 8.1085



38.0327, 2.0552, 1.3767



31.6250, 55.6675, 8.7398



8.7012, 15.5137, 0.8737

Inverse Universe

The Inverse Universe completely reimagines the original color for something new.



79.8161, 6.6843, 2.5367



88.3239, 10.0985, 2.4281



85.4500, -11.8702, 1.0107



38.0327, 2.0552, 1.3767



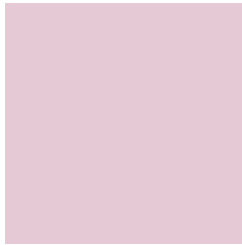
31.6250, 55.6675, 8.7398



8.7012, 15.5137, 0.8737

Previews

White Background



This preview shows how the HunterLab color 79.8143, 6.6865, 2.5353 looks on a white background.

Color Contrast Check

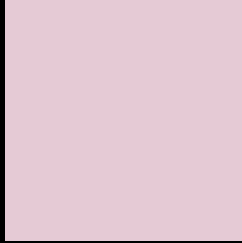
Large Text (above 18pt) WCAG AA × Fail

Any Text WCAG AA × Fail

Large Text (above 18pt) WCAG AAA × Fail

Any Text WCAG AAA × Fail

Black Background



This preview shows how the HunterLab color 79.8143, 6.6865, 2.5353 looks on a black background.

Color Contrast Check

Large Text (above 18pt) WCAG AA ✓ Pass

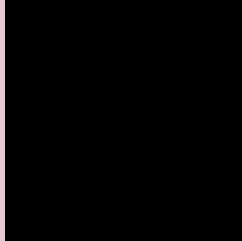
Any Text WCAG AA ✓ Pass

Large Text (above 18pt) WCAG AAA ✓ Pass

Any Text WCAG AAA ✓ Pass

If you want to check with other color combinations, try the [Color Contrast Checker](#).

HunterLab 79.8143, 6.6865, 2.5353 Background



This preview shows how black text looks on a background with the HunterLab color 79.8143, 6.6865, 2.5353.



This preview shows how white text looks on a background with the HunterLab color 79.8143, 6.6865,

2.5353.

Color Blindness Simulation

Color vision deficiency is a very complex topic, and I could not describe the different causes any better than Wikipedia does, so if you want to learn more, you should check out their [article about color blindness](#).

Dichromacy



Original Color

79.8143, 6.6865, 2.5353

Protanopia

79.9490, -1.8993, 1.0526

Deuteranopia

79.9042, 5.4726, 2.6221



Tritanopia

79.7534, 8.2482, 0.4860

Trichromacy



Original Color

79.8143, 6.6865, 2.5353

Protanomaly

79.9715, 1.2280, 1.6356

Deuteranomaly

80.0062, 5.8147, 2.7505

Tritanomaly

79.7209, 8.0751, 0.9487

Monochromacy



Original Color

79.8143, 6.6865, 2.5353

Achromatopsia

80.7097, -4.3065, 4.3851

Achromatomaly

80.4802, -0.3275, 3.6985

CSS Examples

Text

The CSS property to change the color of the text to HunterLab 79.8143, 6.6865, 2.5353 is called "color". The color property can be set on classes, ids or directly on the HTML element.

This example shows how text in the color `rgb(229, 202, 213)` looks like.

```
.text, #text, p{  
    color:rgb(229, 202, 213)  
}
```

If you want to add a text shadow in that color use the text-shadow property, you can generate a text shadow directly with our [CSS Text Shadow Generator](#).

Here you see how black text with a 4 pixel rgb(229, 202, 213) colored shadow looks like.

```
.shadow{ text-shadow: 4px 4px 2px rgb(229, 202, 213) }
```

Border

The CSS property to change the border of an element to HunterLab 79.8143, 6.6865, 2.5353 is called "border".

The border property can be set on classes, ids or directly on the HTML element.

This example shows the color as border, it can be applied via the CSS property "border" or "border-color".

```
.border, #border, table{ border:4px solid rgb(229, 202, 213) }
```


If only the border color should be changed use the property `border-color`.

```
.border{ border-color:rgb(229, 202, 213) }
```

If you want to add a box shadow in that color use:

Here you see how a box with a 4 pixel `rgb(229, 202, 213)` colored shadow looks like.

```
.boxshadow{ -moz-box-shadow:4px 4px 4px  
4px rgb(229, 202, 213); -webkit-box-  
shadow:4px 4px 4px 4px rgb(229, 202, 213);  
box-shadow:4px 4px 4px 4px rgb(229, 202,  
213) }
```

Background

The CSS property to change the background color of an element to HunterLab 79.8143, 6.6865, 2.5353 is called "background". The background property can be set on classes, ids or directly on the HTML element.

```
.background, #background, body{  
background: rgb(229, 202, 213) }
```

If only the background color should be changed can be used:

```
.background{ background-color: rgb(229,  
202, 213) }
```

This example shows the color as background, it is applied via the CSS property "background".

To optimize and compress your CSS code, you can use our [online CSS compressor and optimizer](#) based on csstidy. If you want to create a linear or radial gradient as background or border, check our [CSS Gradient Generator](#).

Hey! You found this booklet interesting? Support Converting Colors with the new Membership Option!

The pro membership hides all ads, plus gives you double the colors in the color bucket, and more awesome pro features!

[Learn more, Memberships starting at \\$2.50/m!](#)

**Follow me
on Twitter!**

@ConvertingColor