

Converting Colors

HunterLab(79.8161, 6.1694,
7.7897)

Have a look what the booklet for
HunterLab(79.8161, 6.1694, 7.7897)
contains.

HunterLab(79.8930, 6.2739, 7.8722)	3
<i>Conversions</i>	4
<i>Details</i>	6
<i>Harmonies</i>	12
<i>Previews</i>	24
<i>Color Blindness Simulation</i>	28
<i>CSS Examples</i>	31

Color

**HunterLab(79.8930, 6.2739,
7.8722)**

Conversions

Conversions Part 1

Format	Color
Hex	E9CACA
RGB	233, 202, 202
RGB Percent	91%, 79%, 79%
CMY	0.0863, 0.2078, 0.2078
CMYK	0.00, 0.13, 0.13, 0.09
HSL	0°, 41%, 85%
HSV	0°, 13%, 91%
XYZ	65.3854, 63.8289, 64.7511
YIQ	211.2690, 18.4760, 6.5720

Conversions

Conversions Part 2

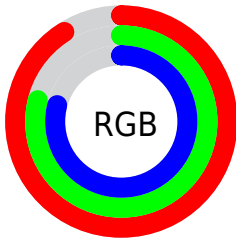
Format	Color
R _Y B	233, 202, 202
Decimal	15321802
CIE Lab	83.88, 10.88, 4.02
CIE LCh	84, 11.597, 20.258
Yxy	63.8318, 0.3371, 0.3291
Android (android.graphics.Color)	4293511882 (0xFFE9CACA)
YUV	211.2690, -4.5696, 19.0581
Hunter-Lab	79.8930, 6.2739, 7.8722

Details

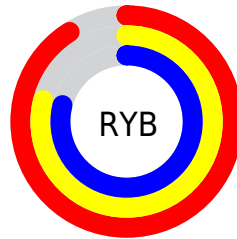
The HunterLab color $79.8930, 6.2739, 7.8722$ is a light color, and the websafe version is hex FFCCCC . A complement of this color would be $87.5876, -14.2823, 1.5361$, and the grayscale version is $80.8404, -4.3134, 4.3922$.

A 20% lighter version of the original color is $100.0000, -5.3358, 5.4332$, and $57.1533, 6.3779, 6.2649$ is the 20% darker color. If you saturate the color by 10%, you get $72.5878, 15.0399, 10.2859$, and if you desaturate by 10%, it is $87.6302, -2.1215, 5.6177$.

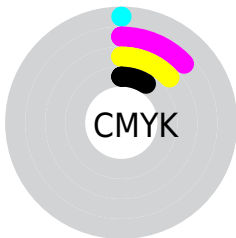
Distribution



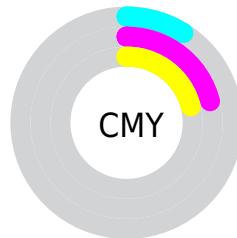
- Red (91%)
- Green (79%)
- Blue (79%)



- Red (91%)
- Yellow (79%)
- Blue (79%)



- Cyan (0%)
- Magenta (13%)
- Yellow (13%)
- Black (9%)



- Cyan (9%)
- Magenta (21%)
- Yellow (21%)

Brightness & Saturation Gradients

These gradients show how the HunterLab color 79.8930, 6.2739, 7.8722 changes by changing the brightness by 10 percent. The first figure shows a shift by +10% for each color and the second figure -10%.

Similar to the brightness gradients but the following saturation gradients show a change of the HunterLab color 79.8930, 6.2739, 7.8722 by changing the saturation by 10% instead.

79.8930, 6.2739,
7.8722

79.8930, 6.2739,
7.8722

209.4235, 3.1734,
16.3136

68.2015, 6.3824,
7.0472

105.0565, 5.8864,
9.5951

57.1419, 6.4320,
6.2439

118.4723, 5.6206,
10.4899

46.7546, 6.4130,
5.4635

132.4151, 5.3102,
11.4069

37.0864, 6.3165,
4.7052

146.8657, 4.9580,
12.3459

28.1954, 6.1302,
3.9673

161.8067, 4.5664,
13.3064

20.1565, 5.8368,
3.2465

177.2226, 4.1372,

13.0720, 5.4109,

14.2881

2.5351

193.0992, 3.6724,
15.2906

■ 6.5523, 6.8855,
2.8970

0.0000, NaN, NaN

■ 79.8930, 6.2739,
7.8722

■ 79.8930, 6.2739,
7.8722

■ 72.5878, 15.0399,
10.2859

■ 87.6302, -2.1215,
5.6177

■ 65.7904, 24.1732,
12.8571

■ 95.7301, -10.1663,
3.5047

■ 59.6038, 33.5822,
15.5646

■ 98.0121, -12.3216,
2.9483

■ 54.1499, 43.0388,
18.3404

■ 49.5651, 52.1062,
21.0482

■ 45.9820, 60.1141,
23.4726

■ 43.4924, 66.2712,
25.3551

■ 42.0948, 69.9785,
26.4951

■ 41.6227, 71.2759,
26.8955

Harmonies

Analogous

The Analogous color harmony consists of three colors that are next to each other on the color wheel.



79.8948, 6.8184, 2.5654



79.8930, 6.2739, 7.8722



79.8948, 2.8576, 11.9539

Triad

The Triadic color harmony groups three colors that are evenly spaced from another and form a triangle on the color wheel.



79.8948, 6.2715, 7.8735



79.8948, -12.5172, 10.7284



79.8948, -6.1125, -6.6183

Complementary

The Complementary color scheme is a pair of colors which are on the opposite of each other on the color wheel.



79.8930, 6.2739, 7.8722



87.5876, -14.2823, 1.5361

Split Complementary

Split-complementary colors differ from the complementary color scheme. The scheme consists of three colors, the original color and two neighbors of the complement color.



79.8948, -11.1509, -4.0860



79.8930, 6.2739, 7.8722



79.8948, -14.7796, 6.0922

Square

The Square scheme is like the rectangle color scheme, but the four colors are evenly spaced on the color wheel.



79.8948, 6.2715, 7.8735



79.8948, -8.0249, 13.5203



79.8948, -14.2866, 0.6560



79.8948, -0.4388, -6.0579

Rectangle

The Rectangle color scheme consists of four colors that form a rectangle on the color wheel.



79.8930, 6.2739, 7.8722



79.8948, -0.5332, 13.5485



79.8948, -14.2866, 0.6560



79.8948, -7.9340, -6.0941

Sweetspot

The Sweet Spot groups the original color and five complimentary colors.



79.8948, 6.2715, 7.8735



96.4495, -1.6986, 6.3965



80.9004, 11.6237, -6.4446



44.3164, -0.4662, 3.0445

0.0000, NaN, NaN



46.2646, -2.4686, 2.5136

Same Dimension

The Same Dimension uses a secret algorithm to generate beautiful new colors.



79.8948, 6.2715, 7.8735



86.2105, 9.6001, 9.4458



84.5414, -1.8232, 12.8742



38.8000, 1.4100, 3.2752



31.3534, 53.6892, 20.2597



8.7865, 15.0426, 5.6776

Inverse Universe

The Inverse Universe completely reimagines the original color for something new.



87.5876, -14.2823, 1.5361



96.4690, -17.8368, 0.9854



82.6586, -6.4286, -4.4755



41.3782, -5.4712, 1.1537



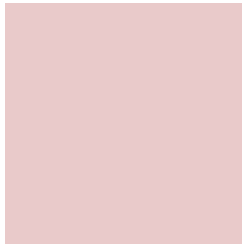
60.3294, -31.9783, -6.3745



16.9059, -8.9614, -1.7858

Previews

White Background



This preview shows how the HunterLab color 79.8930, 6.2739, 7.8722 looks on a white background.

Color Contrast Check

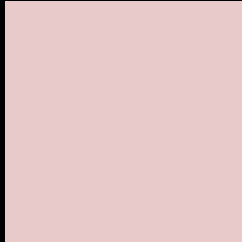
Large Text (above 18pt) WCAG AA × Fail

Any Text WCAG AA × Fail

Large Text (above 18pt) WCAG AAA × Fail

Any Text WCAG AAA × Fail

Black Background



This preview shows how the HunterLab color 79.8930, 6.2739, 7.8722 looks on a black background.

Color Contrast Check

Large Text (above 18pt) WCAG AA ✓ Pass

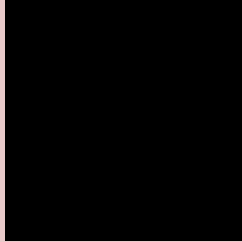
Any Text WCAG AA ✓ Pass

Large Text (above 18pt) WCAG AAA ✓ Pass

Any Text WCAG AAA ✓ Pass

If you want to check with other color combinations, try the [Color Contrast Checker](#).

HunterLab 79.8930, 6.2739, 7.8722 Background



This preview shows how black text looks on a background with the HunterLab color 79.8930, 6.2739, 7.8722.



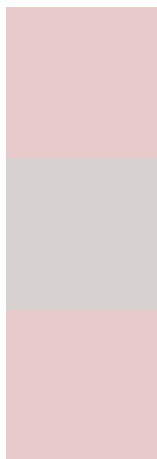
This preview shows how white text looks on a background with the HunterLab color 79.8930, 6.2739,

7.8722.

Color Blindness Simulation

Color vision deficiency is a very complex topic, and I could not describe the different causes any better than Wikipedia does, so if you want to learn more, you should check out their [article about color blindness](#).

Dichromacy



Original Color

79.8930, 6.2739, 7.8722

Protanopia

79.9150, -2.6443, 5.8748

Deuteranopia

79.7879, 5.9219, 7.7466



Tritanopia

79.9554, 10.3472, 1.2746

Trichromacy



Original Color

79.8930, 6.2739, 7.8722

Protanomaly

79.9516, 0.5367, 6.4436

Deuteranomaly

79.7879, 5.9219, 7.7466

Tritanomaly

79.9805, 8.6184, 3.7493

Monochromacy



Original Color

79.8930, 6.2739, 7.8722

Achromatopsia

80.7097, -4.3065, 4.3851

Achromatomaly

80.4524, -0.6707, 5.5851

CSS Examples

Text

The CSS property to change the color of the text to HunterLab 79.8930, 6.2739, 7.8722 is called "color". The color property can be set on classes, ids or directly on the HTML element.

This example shows how text in the color `rgb(233, 202, 202)` looks like.

```
.text, #text, p{  
    color:rgb(233, 202, 202)  
}
```

If you want to add a text shadow in that color use the text-shadow property, you can generate a text shadow directly with our [CSS Text Shadow Generator](#).

Here you see how black text with a 4 pixel rgb(233, 202, 202) colored shadow looks like.

```
.shadow{ text-shadow: 4px 4px 2px rgb(233, 202, 202) }
```

Border

The CSS property to change the border of an element to HunterLab 79.8930, 6.2739, 7.8722 is called "border". The border property can be set on classes, ids or directly on the HTML element.

This example shows the color as border, it can be applied via the CSS property "border" or "border-color".

```
.border, #border, table{ border:4px solid rgb(233, 202, 202) }
```


If only the border color should be changed use the property `border-color`.

```
.border{ border-color:rgb(233, 202, 202) }
```

If you want to add a box shadow in that color use:

Here you see how a box with a 4 pixel `rgb(233, 202, 202)` colored shadow looks like.

```
.boxshadow{ -moz-box-shadow:4px 4px 4px  
4px rgb(233, 202, 202); -webkit-box-  
shadow:4px 4px 4px 4px rgb(233, 202, 202);  
box-shadow:4px 4px 4px 4px rgb(233, 202,  
202) }
```

Background

The CSS property to change the background color of an element to HunterLab 79.8930, 6.2739, 7.8722 is called "background". The background property can be set on classes, ids or directly on the HTML element.

```
.background, #background, body{  
background: rgb(233, 202, 202) }
```

If only the background color should be changed can be used:

```
.background{ background-color: rgb(233,  
202, 202) }
```

This example shows the color as background, it is applied via the CSS property "background".

To optimize and compress your CSS code, you can use our [online CSS compressor and optimizer](#) based on csstidy. If you want to create a linear or radial gradient as background or border, check our [CSS Gradient Generator](#).

Hey! You found this booklet interesting? Support Converting Colors with the new Membership Option!

The pro membership hides all ads, plus gives you double the colors in the color bucket, and more awesome pro features!

[Learn more, Memberships starting at \\$2.50/m!](#)

**Follow me
on Twitter!**

@ConvertingColor