

Converting Colors

HunterLab(79.8747, 3.7362,
6.3935)

Have a look what the booklet for
HunterLab(79.8747, 3.7362, 6.3935)
contains.

HunterLab(79.9527, 3.6165, 6.4989)	3
<i>Conversions</i>	4
<i>Details</i>	6
<i>Harmonies</i>	12
<i>Previews</i>	24
<i>Color Blindness Simulation</i>	28
<i>CSS Examples</i>	31

Color

**HunterLab(79.9527, 3.6165,
6.4989)**

Conversions

Conversions Part 1

Format	Color
Hex	E3CCCD
RGB	227, 204, 205
RGB Percent	89%, 80%, 80%
CMY	0.1098, 0.2000, 0.1961
CMYK	0.00, 0.10, 0.10, 0.11
HSL	357°, 29%, 85%
HSV	357°, 10%, 89%
XYZ	64.2908, 63.9243, 66.7077
YIQ	210.9910, 13.3870, 5.1870

Conversions

Conversions Part 2

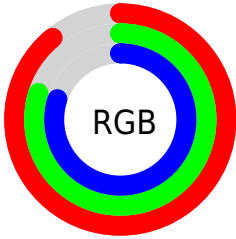
Format	Color
R _Y B	227, 204, 205
Decimal	14929101
CIE Lab	83.93, 8.19, 2.42
CIE LCh	84, 8.540, 16.490
Yxy	63.9272, 0.3298, 0.3280
Android (android.graphics.Color)	4293119181 (0xFFE3CCCD)
YUV	210.9910, -2.9536, 14.0399
Hunter-Lab	79.9527, 3.6165, 6.4989

Details

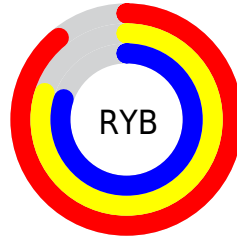
The HunterLab color $79.9527, 3.6165, 6.4989$ is a light color, and the websafe version is hex `CCCCCC`. A complement of this color would be $85.5968, -11.9505, 2.6943$, and the grayscale version is $80.7156, -4.3068, 4.3854$.

A 20% lighter version of the original color is $100.0000, -5.3358, 5.4332$, and $57.2867, 4.1482, 5.0705$ is the 20% darker color. If you saturate the color by 10%, you get $72.7556, 12.1342, 8.4093$, and if you desaturate by 10%, it is $87.5435, -4.5720, 4.7831$.

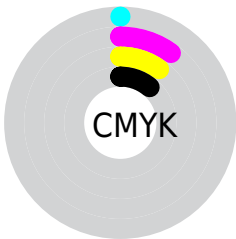
Distribution



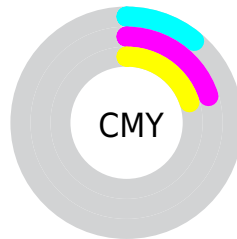
- Red (89%)
- Green (80%)
- Blue (80%)



- Red (89%)
- Yellow (80%)
- Blue (80%)



- Cyan (0%)
- Magenta (10%)
- Yellow (10%)
- Black (11%)



- Cyan (11%)
- Magenta (20%)
- Yellow (20%)

Brightness & Saturation Gradients

These gradients show how the HunterLab color 79.9527, 3.6165, 6.4989 changes by changing the brightness by 10 percent. The first figure shows a shift by +10% for each color and the second figure -10%.

Similar to the brightness gradients but the following saturation gradients show a change of the HunterLab color 79.9527, 3.6165, 6.4989 by changing the saturation by 10% instead.

79.9527, 3.6165,
6.4989

79.9527, 3.6165,
6.4989

209.5057, -0.4168,
14.3853

68.2581, 3.8498,
5.7500

105.1218, 2.9959,
8.0809

57.1953, 4.0302,
5.0276

118.5404, 2.6202,
8.9099

46.8046, 4.1495,
4.3338

132.4858, 2.2038,
9.7637

37.1326, 4.2000,
3.6691

146.9388, 1.7490,
10.6419

28.2376, 4.1712,
3.0340

161.8822, 1.2580,
11.5436

20.1942, 4.0482,
2.4284

177.3004, 0.7323,

13.1047, 3.8085,

12.4684

1.8504

193.1793, 0.1736,
13.4158

■ 6.5942, 5.0589,
1.8827

0.0000, NaN, NaN

■ 79.9527, 3.6165,
6.4989

■ 79.9527, 3.6165,
6.4989

■ 72.7556, 12.1342,
8.4093

■ 87.5435, -4.5720,
4.7831

■ 66.0189, 20.9866,
10.5303

■ 95.4661, -12.4524,
3.2334

■ 59.8345, 30.1085,
12.8688

■ 97.5044, -14.1294,
2.3058

■ 54.3123, 39.3234,
15.3995

■ 49.5793, 48.2772,
18.0412

■ 45.7664, 56.3937,
20.6343

■ 42.9799, 62.9318,
22.9422

■ 41.2563, 67.2241,
24.7093

■ 40.4383, 69.3052,
25.7173

Harmonies

Analogous

The Analogous color harmony consists of three colors that are next to each other on the color wheel.



79.9545, 3.7270, 2.5382



79.9527, 3.6165, 6.4989



79.9545, 1.3608, 9.7210

Triad

The Triadic color harmony groups three colors that are evenly spaced from another and form a triangle on the color wheel.



79.9545, 3.6142, 6.5002



79.9545, -10.0384, 9.4582



79.9545, -6.1467, -3.4763

Complementary

The Complementary color scheme is a pair of colors which are on the opposite of each other on the color wheel.



79.9527, 3.6165, 6.4989



85.5968, -11.9505, 2.6943

Split Complementary

Split-complementary colors differ from the complementary color scheme. The scheme consists of three colors, the original color and two neighbors of the complement color.



79.9545, -9.7500, -1.4169



79.9527, 3.6165, 6.4989



79.9545, -11.9654, 6.1246

Square

The Square scheme is like the rectangle color scheme, but the four colors are evenly spaced on the color wheel.



79.9545, 3.6142, 6.5002



79.9545, -6.5478, 11.3676



79.9545, -11.8610, 2.1428



79.9545, -1.9674, -3.3629

Rectangle

The Rectangle color scheme consists of four colors that form a rectangle on the color wheel.



79.9527, 3.6165, 6.4989



79.9545, -1.0263, 11.0753



79.9545, -11.8610, 2.1428



79.9545, -7.4637, -3.0108

Sweetspot

The Sweet Spot groups the original color and five complimentary colors.



79.9545, 3.6142, 6.5002



97.3413, -2.5556, 6.0025



80.5475, 7.0246, -3.7382



44.7086, -0.8360, 2.8488

0.0000, NaN, NaN



46.2646, -2.4686, 2.5136

Same Dimension

The Same Dimension uses a secret algorithm to generate beautiful new colors.



79.9545, 3.6142, 6.5002



89.5893, 5.9860, 7.8226



83.0440, -1.9264, 10.3491



37.9184, 1.4407, 3.0069



30.8888, 52.9529, 19.5344



8.4181, 14.4738, 4.9938

Inverse Universe

The Inverse Universe completely reimagines the original color for something new.



79.9545, 3.6142, 6.5002



89.5893, 5.9860, 7.8226



82.3597, -6.5217, -1.6817



37.9184, 1.4407, 3.0069



30.8888, 52.9529, 19.5344



8.4181, 14.4738, 4.9938

Previews

White Background



This preview shows how the HunterLab color 79.9527, 3.6165, 6.4989 looks on a white background.

Color Contrast Check

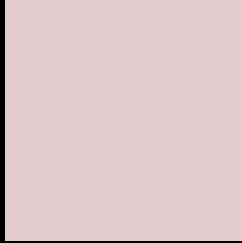
Large Text (above 18pt) WCAG AA × Fail

Any Text WCAG AA × Fail

Large Text (above 18pt) WCAG AAA × Fail

Any Text WCAG AAA × Fail

Black Background



This preview shows how the HunterLab color 79.9527, 3.6165, 6.4989 looks on a black background.

Color Contrast Check

Large Text (above 18pt) WCAG AA ✓ Pass

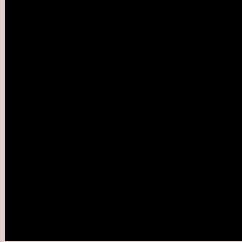
Any Text WCAG AA ✓ Pass

Large Text (above 18pt) WCAG AAA ✓ Pass

Any Text WCAG AAA ✓ Pass

If you want to check with other color combinations, try the [Color Contrast Checker](#).

HunterLab 79.9527, 3.6165, 6.4989 Background



This preview shows how black text looks on a background with the HunterLab color 79.9527, 3.6165, 6.4989.



This preview shows how white text looks on a background with the HunterLab color 79.9527, 3.6165,

6.4989.

Color Blindness Simulation

Color vision deficiency is a very complex topic, and I could not describe the different causes any better than Wikipedia does, so if you want to learn more, you should check out their [article about color blindness](#).

Dichromacy



Original Color

79.9527, 3.6165, 6.4989

Protanopia

79.8517, -2.8025, 5.3242

Deuteranopia

80.0678, 5.5262, 6.6648



Tritanopia

79.9756, 7.5476, 0.2392

Trichromacy



Original Color

79.9527, 3.6165, 6.4989

Protanomaly

79.9921, -0.8163, 5.9960

Deuteranomaly

79.9641, 5.1780, 6.5394

Tritanomaly

80.0062, 5.8147, 2.7505

Monochromacy



Original Color

79.9527, 3.6165, 6.4989

Achromatopsia

80.7097, -4.3065, 4.3851

Achromatomaly

80.2913, -1.1629, 4.9111

CSS Examples

Text

The CSS property to change the color of the text to HunterLab 79.9527, 3.6165, 6.4989 is called "color". The color property can be set on classes, ids or directly on the HTML element.

This example shows how text in the color `rgb(227, 204, 205)` looks like.

```
.text, #text, p{  
    color:rgb(227, 204, 205)  
}
```

If you want to add a text shadow in that color use the text-shadow property, you can generate a text shadow directly with our [CSS Text Shadow Generator](#).

Here you see how black text with a 4 pixel rgb(227, 204, 205) colored shadow looks like.

```
.shadow{ text-shadow: 4px 4px 2px rgb(227, 204, 205) }
```

Border

The CSS property to change the border of an element to HunterLab 79.9527, 3.6165, 6.4989 is called "border". The border property can be set on classes, ids or directly on the HTML element.

This example shows the color as border, it can be applied via the CSS property "border" or "border-color".

```
.border, #border, table{ border:4px solid rgb(227, 204, 205) }
```


If only the border color should be changed use the property `border-color`.

```
.border{ border-color:rgb(227, 204, 205) }
```

If you want to add a box shadow in that color use:

Here you see how a box with a 4 pixel `rgb(227, 204, 205)` colored shadow looks like.

```
.boxshadow{ -moz-box-shadow:4px 4px 4px  
4px rgb(227, 204, 205); -webkit-box-  
shadow:4px 4px 4px 4px rgb(227, 204, 205);  
box-shadow:4px 4px 4px 4px rgb(227, 204,  
205) }
```

Background

The CSS property to change the background color of an element to HunterLab 79.9527, 3.6165, 6.4989 is called "background". The background property can be set on classes, ids or directly on the HTML element.

```
.background, #background, body{  
background: rgb(227, 204, 205) }
```

If only the background color should be changed can be used:

```
.background{ background-color: rgb(227,  
204, 205) }
```

This example shows the color as background, it is applied via the CSS property "background".

To optimize and compress your CSS code, you can use our [online CSS compressor and optimizer](#) based on csstidy. If you want to create a linear or radial gradient as background or border, check our [CSS Gradient Generator](#).

Hey! You found this booklet interesting? Support Converting Colors with the new Membership Option!

The pro membership hides all ads, plus gives you double the colors in the color bucket, and more awesome pro features!

[Learn more, Memberships starting at \\$2.50/m!](#)

**Follow me
on Twitter!**

@ConvertingColor