

# Converting Colors

HunterLab(79.9334, 2.0277,  
15.0628)

Have a look what the booklet for  
HunterLab(79.9334, 2.0277,  
15.0628) contains.

<b>HunterLab(79.7981, 1.9594, 15.1026)</b> .....	3
<b><i>Conversions</i></b> .....	4
<b><i>Details</i></b> .....	6
<b><i>Harmonies</i></b> .....	12
<b><i>Previews</i></b> .....	24
<b><i>Color Blindness Simulation</i></b> .....	28
<b><i>CSS Examples</i></b> .....	31

# Color

**HunterLab(79.7981, 1.9594,  
15.1026)**

# Conversions

## Conversions Part 1

Format	Color
Hex	E7CCB9
RGB	231, 204, 185
RGB Percent	91%, 80%, 73%
CMY	0.0941, 0.2000, 0.2745
CMYK	0.00, 0.12, 0.20, 0.09
HSL	25°, 49%, 82%
HSV	25°, 20%, 91%
XYZ	63.3047, 63.6774, 54.8534
YIQ	209.9070, 22.1910, -0.1850

# Conversions

## Conversions Part 2

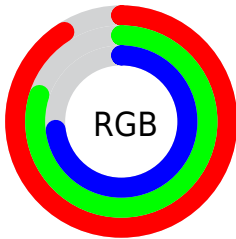
Format	Color
R <sub>Y</sub> B	231, 217, 185
Decimal	15191225
CIE Lab	83.80, 6.49, 12.93
CIE LCh	84, 14.464, 63.346
Yxy	63.6802, 0.3481, 0.3502
Android (android.graphics.Color)	4293381305 (0xFFE7CCB9)
YUV	209.9070, -12.2792, 18.4986
Hunter-Lab	79.7981, 1.9594, 15.1026

# Details

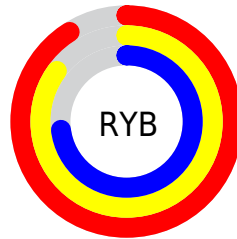
The HunterLab color  $79.7981, 1.9594, 15.1026$  is a light color, and the websafe version is hex `FFCCCC`. A complement of this color would be  $79.4790, -8.8851, -7.5784$ , and the grayscale version is  $80.2853, -4.2838, 4.3621$ .

A 20% lighter version of the original color is  $99.5645, -7.7269, 11.6595$ , and  $57.0899, 2.4915, 12.5511$  is the 20% darker color. If you saturate the color by 10%, you get  $75.2435, 5.8668, 19.5687$ , and if you desaturate by 10%, it is  $84.5364, -1.5878, 10.1642$ .

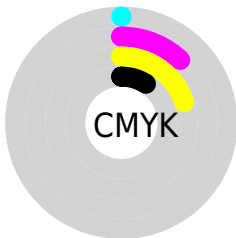
# Distribution



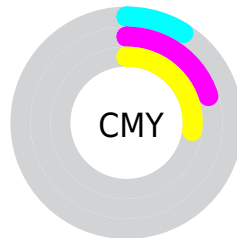
- Red (91%)
- Green (80%)
- Blue (73%)



- Red (91%)
- Yellow (85%)
- Blue (73%)



- Cyan (0%)
- Magenta (12%)
- Yellow (20%)
- Black (9%)



- Cyan (9%)
- Magenta (20%)
- Yellow (27%)

# Brightness & Saturation Gradients

These gradients show how the HunterLab color 79.7981, 1.9594, 15.1026 changes by changing the brightness by 10 percent. The first figure shows a shift by +10% for each color and the second figure -10%.

Similar to the brightness gradients but the following saturation gradients show a change of the HunterLab color 79.7981, 1.9594, 15.1026 by changing the saturation by 10% instead.



79.7981, 1.9594,  
15.1026

79.7981, 1.9594,  
15.1026

209.2926, -2.6629,  
26.7797

68.1115, 2.2712,  
13.8270

104.9525, 1.1911,  
17.6541

57.0570, 2.5346,  
12.5430

118.3641, 0.7460,  
18.9338

46.6753, 2.7417,  
11.2448

132.3028, 0.2626,  
20.2194

37.0130, 2.8856,  
9.9224

146.7494, -0.2568,  
21.5125

28.1283, 2.9573,  
8.5599

161.6866, -0.8106,  
22.8143

20.0965, 2.9435,  
7.1314

177.0988, -1.3971,

13.0201, 2.8241,

24.1256

5.6551

192.9718, -2.0149,  
25.4472

6.4852, 4.0132,  
4.5396

0.0000, NaN, NaN

79.7981, 1.9594,  
15.1026

79.7981, 1.9594,  
15.1026

75.2435, 5.8668,  
19.5687

84.5364, -1.5878,  
10.1642

70.8867, 10.1678,  
23.4915

89.4361, -4.7964,  
4.8086

66.7510, 14.8784,  
26.7967

94.4841, -7.6984,  
-0.9126

62.8608, 20.0039,  
29.4041

97.8412, -12.9291,  
2.7324

■ 59.2421, 25.5283,  
31.2348

■ 55.9221, 31.4032,  
32.2241

■ 52.9272, 37.5352,  
32.3447

■ 50.2733, 43.7436,  
31.7371

■ 50.2515, 43.7967,  
31.7315

# Harmonies

## Analogous

The Analogous color harmony consists of three colors that are next to each other on the color wheel.



79.7999, 7.4693, 11.1599



79.7981, 1.9594, 15.1026



79.7999, -5.0578, 16.2547

# Triad

The Triadic color harmony groups three colors that are evenly spaced from another and form a triangle on the color wheel.



79.7999, 1.9569, 15.1038



79.7999, -17.4428, 3.5817



79.7999, 3.3843, -7.2883

# Complementary

The Complementary color scheme is a pair of colors which are on the opposite of each other on the color wheel.



79.7981, 1.9594, 15.1026



79.4790, -8.8851, -7.5784

# Split Complementary

Split-complementary colors differ from the complementary color scheme. The scheme consists of three colors, the original color and two neighbors of the complement color.



79.7999, -3.4635, -9.7438



79.7981, 1.9594, 15.1026



79.7999, -15.3528, -3.1324

# Square

The Square scheme is like the rectangle color scheme, but the four colors are evenly spaced on the color wheel.



79.7999, 1.9569, 15.1038



79.7999, -16.1043, 9.9544



79.7999, -10.2965, -8.1608



79.7999, 8.3134, -1.7065



# Rectangle

The Rectangle color scheme consists of four colors that form a rectangle on the color wheel.



79.7981, 1.9594, 15.1026



79.7999, -9.6023, 15.3742



79.7999, -10.2965, -8.1608



79.7999, 1.2221, -8.5278

# Sweetspot

The Sweet Spot groups the original color and five complimentary colors.



79.7999, 1.9569, 15.1038



96.6736, -3.2118, 9.0974



75.1475, 16.3895, -2.8653



44.5599, -1.3753, 4.3890

0.0000, NaN, NaN



46.2646, -2.4686, 2.5136



# Same Dimension

The Same Dimension uses a secret algorithm to generate beautiful new colors.



79.7999, 1.9569, 15.1038



87.0937, 3.9820, 19.0712



86.6618, -9.5003, 21.8317



39.1678, -0.8054, 4.5869



37.9314, 32.0050, 23.9335



11.1477, 6.6666, 6.9859

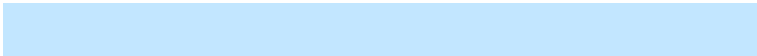


# Inverse Universe

The Inverse Universe completely reimagines the original color for something new.



79.4790, -8.8851, -7.5784



86.6593, -10.6312, -11.5151



72.6213, 2.5923, -16.9289



39.0970, -3.2135, -0.4475



36.4522, 0.4196, -46.4678



10.7889, -1.3426, -10.5870



# Previews

## White Background



This preview shows how the HunterLab color 79.7981, 1.9594, 15.1026 looks on a white background.

## Color Contrast Check

Large Text (above 18pt) WCAG AA × Fail

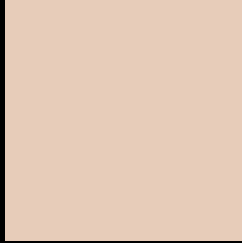
Any Text WCAG AA × Fail

Large Text (above 18pt) WCAG AAA × Fail

Any Text WCAG AAA × Fail



# Black Background



This preview shows how the HunterLab color 79.7981, 1.9594, 15.1026 looks on a black background.

## Color Contrast Check

Large Text (above 18pt) WCAG AA ✓ Pass

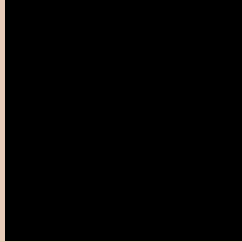
Any Text WCAG AA ✓ Pass

Large Text (above 18pt) WCAG AAA ✓ Pass

Any Text WCAG AAA ✓ Pass

If you want to check with other color combinations, try the [Color Contrast Checker](#).

## HunterLab 79.7981, 1.9594, 15.1026 Background



This preview shows how black text looks on a background with the HunterLab color 79.7981, 1.9594, 15.1026.



This preview shows how white text looks on a background with the HunterLab color 79.7981, 1.9594,



# Color Blindness Simulation

Color vision deficiency is a very complex topic, and I could not describe the different causes any better than Wikipedia does, so if you want to learn more, you should check out their [article about color blindness](#).

## Dichromacy



### Original Color

79.7981, 1.9594, 15.1026

### Protanopia

79.7528, -4.2949, 14.1170

### Deuteranopia

79.6841, 6.1801, 14.6442



## Tritanopia

79.9231, 10.1763, 1.7336

# Trichromacy



## Original Color

79.7981, 1.9594, 15.1026

## Protanomaly

79.9117, -2.2326, 14.7356

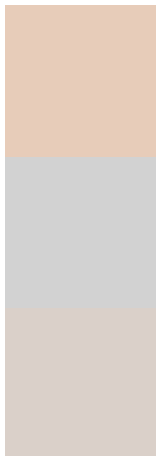
## Deuteranomaly

79.6545, 4.5717, 14.5849

## Tritanomaly

79.7655, 7.4734, 6.8194

# Monochromacy



## Original Color

79.7981, 1.9594, 15.1026

## Achromatopsia

80.2795, -4.2835, 4.3617

## Achromatomaly

80.1463, -2.1443, 8.4696

# CSS Examples

## Text

The CSS property to change the color of the text to HunterLab 79.7981, 1.9594, 15.1026 is called "color". The color property can be set on classes, ids or directly on the HTML element.

This example shows how text in the color `rgb(231, 204, 185)` looks like.

```
.text, #text, p{  
    color:rgb(231, 204, 185)  
}
```

If you want to add a text shadow in that color use the text-shadow property, you can generate a text shadow directly with our [CSS Text Shadow Generator](#).

Here you see how black text with a 4 pixel rgb(231, 204, 185) colored shadow looks like.

```
.shadow{ text-shadow: 4px 4px 2px rgb(231, 204, 185) }
```

## Border

The CSS property to change the border of an element to HunterLab 79.7981, 1.9594, 15.1026 is called "border". The border property can be set on classes, ids or directly on the HTML element.

This example shows the color as border, it can be applied via the CSS property "border" or "border-color".

```
.border, #border, table{ border:4px solid rgb(231, 204, 185) }
```



If only the border color should be changed use the property `border-color`.

```
.border{ border-color:rgb(231, 204, 185) }
```

If you want to add a box shadow in that color use:

Here you see how a box with a 4 pixel `rgb(231, 204, 185)` colored shadow looks like.

```
.boxshadow{ -moz-box-shadow:4px 4px 4px  
4px rgb(231, 204, 185); -webkit-box-  
shadow:4px 4px 4px 4px rgb(231, 204, 185);  
box-shadow:4px 4px 4px 4px rgb(231, 204,  
185) }
```

# Background

The CSS property to change the background color of an element to HunterLab 79.7981, 1.9594, 15.1026 is called "background". The background property can be set on classes, ids or directly on the HTML element.

```
.background, #background, body{  
background: rgb(231, 204, 185) }
```

If only the background color should be changed can be used:

```
.background{ background-color: rgb(231,  
204, 185) }
```

This example shows the color as background, it is applied via the CSS property "background".

To optimize and compress your CSS code, you can use our [online CSS compressor and optimizer](#) based on csstidy. If you want to create a linear or radial gradient as background or border, check our [CSS Gradient Generator](#).

Hey! You found this booklet interesting? Support Converting Colors with the new Membership Option!

The pro membership hides all ads, plus gives you double the colors in the color bucket, and more awesome pro features!

**[Learn more, Memberships starting at \\$2.50/m!](#)**

**Follow me  
on Twitter!**

@ConvertingColor