

Converting Colors

HunterLab(79.9759, 19.1382,
-9.2192)

Have a look what the booklet for
HunterLab(79.9759, 19.1382,
-9.2192) contains.

HunterLab(79.9772, 19.1138, -9.2139)	3
<i>Conversions</i>	4
<i>Details</i>	6
<i>Harmonies</i>	12
<i>Previews</i>	24
<i>Color Blindness Simulation</i>	28
<i>CSS Examples</i>	31

Color

**HunterLab(79.9772, 19.1138,
-9.2139)**

Conversions

Conversions Part 1

Format	Color
Hex	F2C3EC
RGB	242, 195, 236
RGB Percent	95%, 76%, 93%
CMY	0.0510, 0.2353, 0.0745
CMYK	0.00, 0.19, 0.02, 0.05
HSL	308°, 64%, 86%
HSV	308°, 19%, 95%
XYZ	71.2733, 63.9635, 87.9465
YIQ	213.7270, 14.8510, 22.7150

Conversions

Conversions Part 2

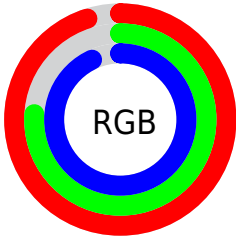
Format	Color
R _Y B	242, 195, 236
Decimal	15909868
CIE Lab	83.95, 23.45, -13.93
CIE LCh	84, 27.276, 329.277
Yxy	63.9663, 0.3193, 0.2866
Android (android.graphics.Color)	4294099948 (0xFFFF2C3EC)
YUV	213.7270, 10.9806, 24.7954
Hunter-Lab	79.9772, 19.1138, -9.2139

Details

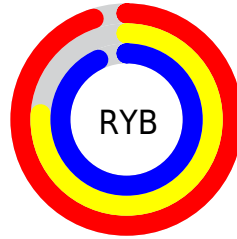
The HunterLab color **79.9772, 19.1138, -9.2139** is a light color, and the websafe version is hex **FFCCFF**. A complement of this color would be **89.0647, -25.9878, 17.6387**, and the grayscale version is **81.8360, -4.3666, 4.4463**.

A 20% lighter version of the original color is **99.0459, -3.7429, 4.3328**, and **57.1483, 17.9652, -9.2692** is the 20% darker color. If you saturate the color by 10%, you get **73.3539, 31.8461, -16.4990**, and if you desaturate by 10%, it is **87.1121, 6.5565, -1.8352**.

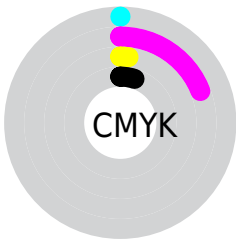
Distribution



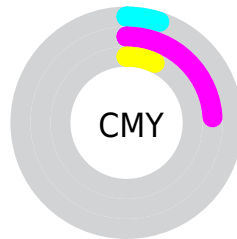
- Red (95%)
- Green (76%)
- Blue (93%)



- Red (95%)
- Yellow (76%)
- Blue (93%)



- Cyan (0%)
- Magenta (19%)
- Yellow (2%)
- Black (5%)



- Cyan (5%)
- Magenta (24%)
- Yellow (7%)

Brightness & Saturation Gradients

These gradients show how the HunterLab color 79.9772, 19.1138, -9.2139 changes by changing the brightness by 10 percent. The first figure shows a shift by +10% for each color and the second figure -10%.

Similar to the brightness gradients but the following saturation gradients show a change of the HunterLab color 79.9772, 19.1138, -9.2139 by changing the saturation by 10% instead.

79.9772, 19.1138,
-9.2139

79.9772, 19.1138,
-9.2139

209.5395, 20.2344,
-6.6068

68.2813, 18.6678,
-9.2654

105.1487, 19.7725,
-8.9435

57.2172, 18.1381,
-9.2587

118.5683, 20.0022,
-8.7349

46.8250, 17.5124,
-9.1870

132.5147, 20.1713,
-8.4808

37.1516, 16.7785,
-9.0449

146.9688, 20.2839,
-8.1838

28.2549, 15.9209,
-8.8267

161.9132, 20.3436,
-7.8460

20.2097, 14.9215,
-8.5289

177.3324, 20.3535,

13.1181, 13.7634,

-7.4695

-8.1592

193.2121, 20.3163,
-7.0558

6.6113, 15.3334,
-9.1497

0.0000, NaN, -NF

79.9772, 19.1138,
-9.2139

79.9772, 19.1138,
-9.2139

73.3539, 31.8461,
-16.4990

87.1121, 6.5565,
-1.8352

67.3242, 44.5744,
-23.5483

94.6802, -5.7332,
5.5474

61.9899, 56.9621,
-30.1273

98.4919, -11.2425,
8.3605

57.4575, 68.4860,
-35.9038

98.5886, -10.7071,
6.9787

■ 53.8259, 78.4453,
-40.4663

■ 98.6868, -10.1639,
5.5767

■ 51.1624, 86.0804,
-43.4073

■ 98.7866, -9.6129,
4.1545

■ 49.4702, 90.8238,
-44.4729

■ 98.8016, -9.5301,
3.9409

■ 48.6059, 92.7829,
-43.8268

■ 48.5653, 92.8641,
-43.7694

Harmonies

Analogous

The Analogous color harmony consists of three colors that are next to each other on the color wheel.



79.9790, 8.7262, -20.1204



79.9772, 19.1138, -9.2139



79.9790, 23.1650, 4.0434

Triad

The Triadic color harmony groups three colors that are evenly spaced from another and form a triangle on the color wheel.



79.9790, 19.1115, -9.2123



79.9790, -3.9462, 25.1933



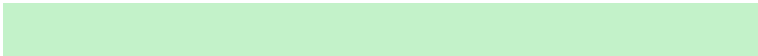
79.9790, -25.5340, -8.5881

Complementary

The Complementary color scheme is a pair of colors which are on the opposite of each other on the color wheel.



79.9772, 19.1138, -9.2139



89.0647, -25.9878, 17.6387

Split Complementary

Split-complementary colors differ from the complementary color scheme. The scheme consists of three colors, the original color and two neighbors of the complement color.



79.9790, -28.4456, 4.6623



79.9772, 19.1138, -9.2139



79.9790, -16.4893, 22.9222

Square

The Square scheme is like the rectangle color scheme, but the four colors are evenly spaced on the color wheel.



79.9790, 19.1115, -9.2123



79.9790, 9.3259, 22.6918



79.9790, -25.2433, 15.8935



79.9790, -17.0176, -19.7203

Rectangle

The Rectangle color scheme consists of four colors that form a rectangle on the color wheel.



79.9772, 19.1138, -9.2139



79.9790, 21.5391, 12.0318



79.9790, -25.2433, 15.8935



79.9790, -27.1748, -4.1707

Sweetspot

The Sweet Spot groups the original color and five complimentary colors.



79.9790, 19.1115, -9.2123



95.1307, 2.4859, 0.7209



76.0199, 6.6603, -18.5585



43.7709, 1.5471, 0.0959

0.0000, NaN, NaN



46.2646, -2.4686, 2.5136

Same Dimension

The Same Dimension uses a secret algorithm to generate beautiful new colors.



79.9790, 19.1115, -9.2123



82.2466, 25.1928, -12.6124



79.1930, 15.0161, 1.9212



39.9933, 3.0408, -0.8604



35.6155, 68.1344, -32.3474



10.3192, 19.8157, -9.9499

Inverse Universe

The Inverse Universe completely reimagines the original color for something new.



79.9790, 19.1115, -9.2123



82.2466, 25.1928, -12.6124



89.7156, -22.2807, 8.2938



39.9933, 3.0408, -0.8604



35.6155, 68.1344, -32.3474



10.3192, 19.8157, -9.9499

Previews

White Background



This preview shows how the HunterLab color 79.9772, 19.1138, -9.2139 looks on a white background.

Color Contrast Check

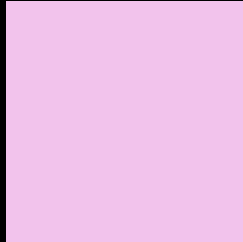
Large Text (above 18pt) WCAG AA × Fail

Any Text WCAG AA × Fail

Large Text (above 18pt) WCAG AAA × Fail

Any Text WCAG AAA × Fail

Black Background



This preview shows how the HunterLab color 79.9772, 19.1138, -9.2139 looks on a black background.

Color Contrast Check

Large Text (above 18pt) WCAG AA ✓ Pass

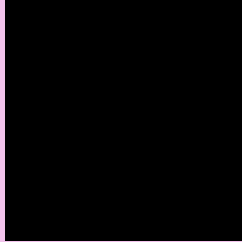
Any Text WCAG AA ✓ Pass

Large Text (above 18pt) WCAG AAA ✓ Pass

Any Text WCAG AAA ✓ Pass

If you want to check with other color combinations, try the [Color Contrast Checker](#).

HunterLab 79.9772, 19.1138, -9.2139 Background



This preview shows how black text looks on a background with the HunterLab color 79.9772, 19.1138, -9.2139.



This preview shows how white text looks on a background with the HunterLab color 79.9772, 19.1138, -9.2139.

-9.2139.

Color Blindness Simulation

Color vision deficiency is a very complex topic, and I could not describe the different causes any better than Wikipedia does, so if you want to learn more, you should check out their [article about color blindness](#).

Dichromacy



Original Color

79.9772, 19.1138, -9.2139

Protanopia

80.2122, 0.9686, -13.8203

Deuteranopia

80.0198, 5.7584, -8.2677



Tritanopia

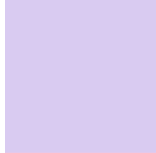
80.0329, 11.9567, 2.3954

Trichromacy



Original Color

79.9772, 19.1138, -9.2139



Protanomaly

79.8840, 7.3407, -12.4127



Deuteranomaly

80.0639, 10.5123, -8.6848



Tritanomaly

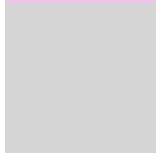
80.1170, 14.2264, -1.5255

Monochromacy



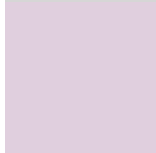
Original Color

79.9772, 19.1138, -9.2139



Achromatopsia

82.0026, -4.3755, 4.4554



Achromatomaly

81.0844, 3.9194, -0.4996

CSS Examples

Text

The CSS property to change the color of the text to HunterLab 79.9772, 19.1138, -9.2139 is called "color". The color property can be set on classes, ids or directly on the HTML element.

This example shows how text in the color `rgb(242, 195, 236)` looks like.

```
.text, #text, p{  
    color:rgb(242, 195, 236)  
}
```

If you want to add a text shadow in that color use the text-shadow property, you can generate a text shadow directly with our [CSS Text Shadow Generator](#).

Here you see how black text with a 4 pixel rgb(242, 195, 236) colored shadow looks like.

```
.shadow{ text-shadow: 4px 4px 2px rgb(242, 195, 236) }
```

Border

The CSS property to change the border of an element to HunterLab 79.9772, 19.1138, -9.2139 is called "border". The border property can be set on classes, ids or directly on the HTML element.

This example shows the color as border, it can be applied via the CSS property "border" or "border-color".

```
.border, #border, table{ border:4px solid rgb(242, 195, 236) }
```


If only the border color should be changed use the property `border-color`.

```
.border{ border-color:rgb(242, 195, 236) }
```

If you want to add a box shadow in that color use:

Here you see how a box with a 4 pixel `rgb(242, 195, 236)` colored shadow looks like.

```
.boxshadow{ -moz-box-shadow:4px 4px 4px  
4px rgb(242, 195, 236); -webkit-box-  
shadow:4px 4px 4px 4px rgb(242, 195, 236);  
box-shadow:4px 4px 4px 4px rgb(242, 195,  
236) }
```

Background

The CSS property to change the background color of an element to HunterLab 79.9772, 19.1138, -9.2139 is called "background". The background property can be set on classes, ids or directly on the HTML element.

```
.background, #background, body{  
background: rgb(242, 195, 236) }
```

If only the background color should be changed can be used:

```
.background{ background-color: rgb(242,  
195, 236) }
```

This example shows the color as background, it is applied via the CSS property "background".

To optimize and compress your CSS code, you can use our [online CSS compressor and optimizer](#) based on csstidy. If you want to create a linear or radial gradient as background or border, check our [CSS Gradient Generator](#).

Hey! You found this booklet interesting? Support Converting Colors with the new Membership Option!

The pro membership hides all ads, plus gives you double the colors in the color bucket, and more awesome pro features!

[Learn more, Memberships starting at \\$2.50/m!](#)

**Follow me
on Twitter!**

@ConvertingColor