

Converting Colors

HunterLab(80.0277, 4.6435,
4.0820)

Have a look what the booklet for
HunterLab(80.0277, 4.6435, 4.0820)
contains.

| | |
|---|----|
| HunterLab(80.1060, 4.4404, 4.3101) | 3 |
| <i>Conversions</i> | 4 |
| <i>Details</i> | 6 |
| <i>Harmonies</i> | 12 |
| <i>Previews</i> | 24 |
| <i>Color Blindness Simulation</i> | 28 |
| <i>CSS Examples</i> | 31 |

Color

**HunterLab(80.1060, 4.4404,
4.3101)**

Conversions

Conversions Part 1

| Format | Color |
|-------------|---------------------------|
| Hex | E3CCD2 |
| RGB | 227, 204, 210 |
| RGB Percent | 89%, 80%, 82% |
| CMY | 0.1098, 0.2000, 0.1765 |
| CMYK | 0.00, 0.10, 0.07, 0.11 |
| HSL | 344°, 29%, 85% |
| HSV | 344°, 10%, 89% |
| XYZ | 64.9042, 64.1697, 69.9378 |
| YIQ | 211.5610, 11.7820, 6.7420 |

Conversions

Conversions Part 2

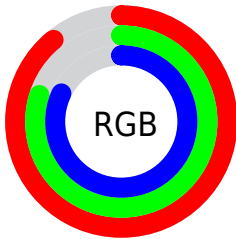
| Format | Color |
|-------------------------------------|-------------------------------|
| R _Y B | 227, 204, 210 |
| Decimal | 14929106 |
| CIE Lab | 84.06, 9.03, -0.05 |
| CIE LCh | 84, 9.030, 359.654 |
| Yxy | 64.1725, 0.3261, 0.3224 |
| Android (android.graphics.Color) | 4293119186 (0xFFE3CCD2) |
| YUV | 211.5610, -0.7696, 13.5400 |
| Hunter-Lab | 80.1060, 4.4404, 4.3101 |

Details

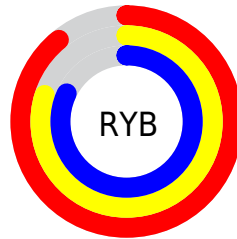
The HunterLab color $80.1060, 4.4404, 4.3101$ is a light color, and the websafe version is hex `CCCCCC`. A complement of this color would be $85.4386, -12.8315, 4.9491$, and the grayscale version is $80.9523, -4.3194, 4.3983$.

A 20% lighter version of the original color is $100.0000, -5.3358, 5.4332$, and $57.4314, 4.9214, 3.0048$ is the 20% darker color. If you saturate the color by 10%, you get $73.0501, 13.6795, 4.1994$, and if you desaturate by 10%, it is $87.5456, -4.5609, 4.7542$.

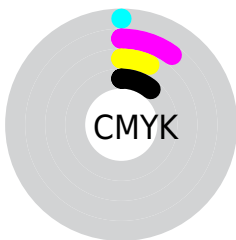
Distribution



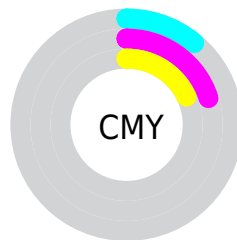
- Red (89%)
- Green (80%)
- Blue (82%)



- Red (89%)
- Yellow (80%)
- Blue (82%)



- Cyan (0%)
- Magenta (10%)
- Yellow (7%)
- Black (11%)



- Cyan (11%)
- Magenta (20%)
- Yellow (18%)

Brightness & Saturation Gradients

These gradients show how the HunterLab color 80.1060, 4.4404, 4.3101 changes by changing the brightness by 10 percent. The first figure shows a shift by +10% for each color and the second figure -10%.

Similar to the brightness gradients but the following saturation gradients show a change of the HunterLab color 80.1060, 4.4404, 4.3101 by changing the saturation by 10% instead.

80.1060, 4.4404,
4.3101

80.1060, 4.4404,
4.3101

209.7171, 0.6946,
11.3479

68.4035, 4.6354,
3.6769

105.2898, 3.8917,
5.6775

57.3324, 4.7755,
3.0769

118.7152, 3.5498,
6.4061

46.9328, 4.8523,
2.5136

132.6671, 3.1661,
7.1634

37.2514, 4.8576,
1.9897

147.1265, 2.7429,
7.9485

28.3459, 4.7804,
1.5083

162.0761, 2.2825,
8.7602

20.2911, 4.6051,
1.0735

177.5003, 1.7866,

13.1886, 4.3081,

9.5979

0.6910

193.3849, 1.2568,
10.4607

6.7005, 5.5144,
0.3310

0.0000, NaN, NaN

80.1060, 4.4404,
4.3101

80.1060, 4.4404,
4.3101

73.0501, 13.6795,
4.1994

87.5456, -4.5609,
4.7542

66.4407, 23.1344,
4.4884

95.3093, -13.3243,
5.4691

60.3645, 32.7068,
5.2572

97.5044, -14.1293,
2.3058

54.9241, 42.1857,
6.5832

■ 50.2371, 51.1903,
8.5184

■ 46.4248, 59.1405,
11.0514

■ 43.5866, 65.3242,
14.0616

■ 41.7598, 69.1288,
17.2989

■ 40.8029, 70.6549,
20.3298

Harmonies

Analogous

The Analogous color harmony consists of three colors that are next to each other on the color wheel.



80.1078, 3.2226, 0.1481



80.1060, 4.4404, 4.3101



80.1078, 3.2761, 8.2753

Triad

The Triadic color harmony groups three colors that are evenly spaced from another and form a triangle on the color wheel.



80.1078, 4.4382, 4.3115



80.1078, -8.4588, 11.1017



80.1078, -8.5462, -2.9692

Complementary

The Complementary color scheme is a pair of colors which are on the opposite of each other on the color wheel.



80.1060, 4.4404, 4.3101



85.4386, -12.8315, 4.9491

Split Complementary

Split-complementary colors differ from the complementary color scheme. The scheme consists of three colors, the original color and two neighbors of the complement color.



80.1078, -11.5633, 0.2375



80.1060, 4.4404, 4.3101



80.1078, -11.5137, 8.3558

Square

The Square scheme is like the rectangle color scheme, but the four colors are evenly spaced on the color wheel.



80.1078, 4.4382, 4.3115



80.1078, -4.2271, 12.0637



80.1078, -12.6380, 4.4095



80.1078, -4.3302, -4.1929

Rectangle

The Rectangle color scheme consists of four colors that form a rectangle on the color wheel.



80.1060, 4.4404, 4.3101



80.1078, 1.3235, 10.3063



80.1078, -12.6380, 4.4095



80.1078, -9.7309, -2.0792

Sweetspot

The Sweet Spot groups the original color and five complimentary colors.



80.1078, 4.4382, 4.3115



97.3945, -2.2659, 5.2439



80.0537, 5.3713, -4.4015



44.7397, -0.6668, 2.4050

0.0000, NaN, NaN



46.2646, -2.4686, 2.5136

Same Dimension

The Same Dimension uses a secret algorithm to generate beautiful new colors.



80.1078, 4.4382, 4.3115



89.7966, 7.0953, 4.8624



81.5317, 0.6556, 8.7058



37.9860, 1.8046, 2.0415



31.1862, 54.0536, 15.1418



8.5653, 15.0166, 2.8348

Inverse Universe

The Inverse Universe completely reimagines the original color for something new.



80.1078, 4.4382, 4.3115



89.7966, 7.0953, 4.8624



83.9245, -9.0588, 0.2136



37.9860, 1.8046, 2.0415



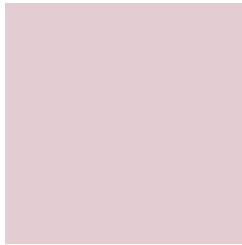
31.1862, 54.0536, 15.1418



8.5653, 15.0166, 2.8348

Previews

White Background



This preview shows how the HunterLab color 80.1060, 4.4404, 4.3101 looks on a white background.

Color Contrast Check

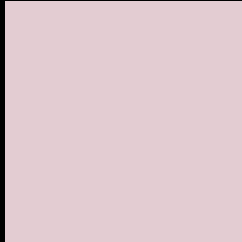
Large Text (above 18pt) WCAG AA × Fail

Any Text WCAG AA × Fail

Large Text (above 18pt) WCAG AAA × Fail

Any Text WCAG AAA × Fail

Black Background



This preview shows how the HunterLab color 80.1060, 4.4404, 4.3101 looks on a black background.

Color Contrast Check

Large Text (above 18pt) WCAG AA ✓ Pass

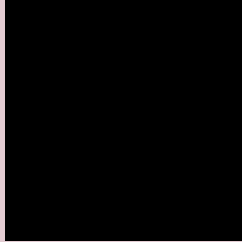
Any Text WCAG AA ✓ Pass

Large Text (above 18pt) WCAG AAA ✓ Pass

Any Text WCAG AAA ✓ Pass

If you want to check with other color combinations, try the [Color Contrast Checker](#).

HunterLab 80.1060, 4.4404, 4.3101 Background



This preview shows how black text looks on a background with the HunterLab color 80.1060, 4.4404, 4.3101.



This preview shows how white text looks on a background with the HunterLab color 80.1060, 4.4404,

4.3101.

Color Blindness Simulation

Color vision deficiency is a very complex topic, and I could not describe the different causes any better than Wikipedia does, so if you want to learn more, you should check out their [article about color blindness](#).

Dichromacy



Original Color

80.1060, 4.4404, 4.3101

Protanopia

80.2509, -2.6184, 2.8958

Deuteranopia

80.1174, 5.9988, 4.3508



Tritanopia

80.2000, 6.8504, -0.0060

Trichromacy



Original Color

80.1060, 4.4404, 4.3101

Protanomaly

80.0817, -0.1373, 3.2280

Deuteranomaly

80.0144, 5.6535, 4.2232

Tritanomaly

80.1023, 6.3285, 1.3832

Monochromacy



Original Color

80.1060, 4.4404, 4.3101

Achromatopsia

81.1403, -4.3294, 4.4085

Achromatomaly

80.6572, -1.3424, 4.3751

CSS Examples

Text

The CSS property to change the color of the text to HunterLab 80.1060, 4.4404, 4.3101 is called "color". The color property can be set on classes, ids or directly on the HTML element.

This example shows how text in the color `rgb(227, 204, 210)` looks like.

```
.text, #text, p{  
    color:rgb(227, 204, 210)  
}
```

If you want to add a text shadow in that color use the text-shadow property, you can generate a text shadow directly with our [CSS Text Shadow Generator](#).

Here you see how black text with a 4 pixel rgb(227, 204, 210) colored shadow looks like.

```
.shadow{ text-shadow: 4px 4px 2px rgb(227, 204, 210) }
```

Border

The CSS property to change the border of an element to HunterLab 80.1060, 4.4404, 4.3101 is called "border". The border property can be set on classes, ids or directly on the HTML element.

This example shows the color as border, it can be applied via the CSS property "border" or "border-color".

```
.border, #border, table{ border:4px solid rgb(227, 204, 210) }
```


If only the border color should be changed use the property `border-color`.

```
.border{ border-color:rgb(227, 204, 210) }
```

If you want to add a box shadow in that color use:

Here you see how a box with a 4 pixel `rgb(227, 204, 210)` colored shadow looks like.

```
.boxshadow{ -moz-box-shadow:4px 4px 4px  
4px rgb(227, 204, 210); -webkit-box-  
shadow:4px 4px 4px 4px rgb(227, 204, 210);  
box-shadow:4px 4px 4px 4px rgb(227, 204,  
210) }
```

Background

The CSS property to change the background color of an element to HunterLab 80.1060, 4.4404, 4.3101 is called "background". The background property can be set on classes, ids or directly on the HTML element.

```
.background, #background, body{  
background: rgb(227, 204, 210) }
```

If only the background color should be changed can be used:

```
.background{ background-color: rgb(227,  
204, 210) }
```

This example shows the color as background, it is applied via the CSS property "background".

To optimize and compress your CSS code, you can use our [online CSS compressor and optimizer](#) based on csstidy. If you want to create a linear or radial gradient as background or border, check our [CSS Gradient Generator](#).

Hey! You found this booklet interesting? Support Converting Colors with the new Membership Option!

The pro membership hides all ads, plus gives you double the colors in the color bucket, and more awesome pro features!

[Learn more, Memberships starting at \\$2.50/m!](#)

**Follow me
on Twitter!**

@ConvertingColor