

# Converting Colors

HunterLab(80.0380, 3.6662,  
8.4493)

Have a look what the booklet for  
HunterLab(80.0380, 3.6662, 8.4493)  
contains.

<b>HunterLab(80.0380, 3.6662, 8.4493)</b> .....	3
<i><b>Conversions</b></i> .....	4
<i><b>Details</b></i> .....	6
<i><b>Harmonies</b></i> .....	12
<i><b>Previews</b></i> .....	24
<i><b>Color Blindness Simulation</b></i> .....	28
<i><b>CSS Examples</b></i> .....	31

# Color

**HunterLab(80.0380, 3.6662,  
8.4493)**

# Conversions

## Conversions Part 1

Format	Color
Hex	E5CCC9
RGB	229, 204, 201
RGB Percent	90%, 80%, 79%
CMY	0.1020, 0.2000, 0.2118
CMYK	0.00, 0.11, 0.12, 0.10
HSL	6°, 35%, 84%
HSV	6°, 12%, 90%
XYZ	64.4486, 64.0608, 64.2265
YIQ	211.1330, 15.8630, 4.3670

# Conversions

## Conversions Part 2

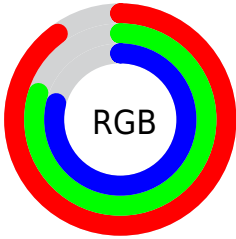
Format	Color
R <sub>Y</sub> B	229, 204, 201
Decimal	15060169
CIE Lab	84.00, 8.24, 4.68
CIE LCh	84, 9.477, 29.587
Yxy	64.0637, 0.3344, 0.3324
Android (android.graphics.Color)	4293250249 (0xFFE5CCC9)
YUV	211.1330, -4.9956, 15.6694
Hunter-Lab	80.0380, 3.6662, 8.4493

# Details

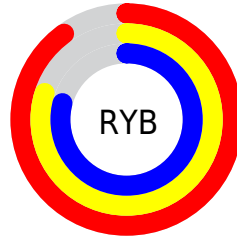
The HunterLab color **80.0380, 3.6662, 8.4493** is a light color, and the websafe version is hex **CCCCCC**, and the color name is **dust storm**. A complement of this color would be **85.1270, -11.7818, 0.6182**, and the grayscale version is **80.7845, -4.3105, 4.3892**.

A 20% lighter version of the original color is **100.0000, -5.3358, 5.4332**, and **57.2744, 3.8835, 6.7850** is the 20% darker color. If you saturate the color by 10%, you get **73.4684, 10.9127, 11.4278**, and if you desaturate by 10%, it is **86.9411, -3.2323, 5.4715**.

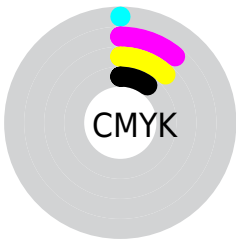
# Distribution



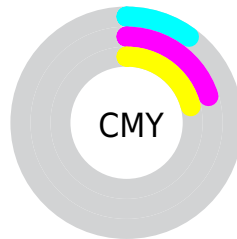
- Red (90%)
- Green (80%)
- Blue (79%)



- Red (90%)
- Yellow (80%)
- Blue (79%)



- Cyan (0%)
- Magenta (11%)
- Yellow (12%)
- Black (10%)



- Cyan (10%)
- Magenta (20%)
- Yellow (21%)

# Brightness & Saturation Gradients

These gradients show how the HunterLab color 80.0380, 3.6662, 8.4493 changes by changing the brightness by 10 percent. The first figure shows a shift by +10% for each color and the second figure -10%.

Similar to the brightness gradients but the following saturation gradients show a change of the HunterLab color 80.0380, 3.6662, 8.4493 by changing the saturation by 10% instead.



80.0380, 3.6662,  
8.4493

80.0380, 3.6662,  
8.4493

209.6233, -0.3514,  
17.1268

68.3390, 3.8973,  
7.5918

105.2153, 3.0494,  
10.2322

57.2716, 4.0756,  
6.7540

118.6377, 2.6755,  
11.1550

46.8759, 4.1927,  
5.9367

132.5867, 2.2609,  
12.0989

37.1987, 4.2408,  
5.1383

147.0433, 1.8079,  
13.0638

28.2979, 4.2095,  
4.3565

161.9901, 1.3186,  
14.0492

20.2481, 4.0839,  
3.5864

177.4117, 0.7945,

13.1514, 3.8414,

15.0551

2.8179

193.2937, 0.2374,  
16.0811

■ 6.6536, 5.0418,  
3.2773

0.0000, NaN, NaN

■ 80.0380, 3.6662,  
8.4493

■ 80.0380, 3.6662,  
8.4493

■ 73.4684, 10.9127,  
11.4278

■ 86.9411, -3.2323,  
5.4715

■ 67.2817, 18.5300,  
14.3779

■ 94.1280, -9.8088,  
2.5032

■ 61.5468, 26.4948,  
17.2551

■ 97.6720, -13.5315,  
2.5182

■ 56.3447, 34.7174,  
19.9834

■ 51.7683, 42.9972,  
22.4472

■ 47.9169, 50.9818,  
24.4903

■ 44.8813, 58.1605,  
25.9386

■ 42.7200, 63.9426,  
26.6609

■ 41.6355, 67.1233,  
26.8307

# Harmonies

## Analogous

The Analogous color harmony consists of three colors that are next to each other on the color wheel.



80.0398, 4.8801, 4.2954



80.0380, 3.6662, 8.4493



80.0398, 0.3099, 11.3620

# Triad

The Triadic color harmony groups three colors that are evenly spaced from another and form a triangle on the color wheel.



80.0398, 3.6639, 8.4506



80.0398, -11.8539, 8.5512



80.0398, -4.3395, -4.6404

# Complementary

The Complementary color scheme is a pair of colors which are on the opposite of each other on the color wheel.



80.0380, 3.6662, 8.4493



85.1270, -11.7818, 0.6182

# Split Complementary

Split-complementary colors differ from the complementary color scheme. The scheme consists of three colors, the original color and two neighbors of the complement color.



80.0398, -8.7590, -3.3451



80.0380, 3.6662, 8.4493



80.0398, -13.0362, 4.4182

# Square

The Square scheme is like the rectangle color scheme, but the four colors are evenly spaced on the color wheel.



80.0398, 3.6639, 8.4506



80.0398, -8.6496, 11.4177



80.0398, -11.9160, 0.0346



80.0398, 0.1956, -3.4125



# Rectangle

The Rectangle color scheme consists of four colors that form a rectangle on the color wheel.



80.0380, 3.6662, 8.4493



80.0398, -2.6497, 12.2921



80.0398, -11.9160, 0.0346



80.0398, -5.8875, -4.4846

# Sweetspot

The Sweet Spot groups the original color and five complimentary colors.



80.0398, 3.6639, 8.4506



96.7924, -2.2795, 6.7854



79.9589, 9.5433, -4.0224



44.5042, -0.7856, 3.2570

0.0000, NaN, NaN



46.2646, -2.4686, 2.5136



# Same Dimension

The Same Dimension uses a secret algorithm to generate beautiful new colors.



80.0398, 3.6639, 8.4506



88.2567, 6.4408, 10.5105



84.2111, -3.4942, 12.9232



38.2303, 0.8024, 3.5583



31.6150, 50.3140, 20.3619



9.0697, 12.1662, 5.8017



# Inverse Universe

The Inverse Universe completely reimagines the original color for something new.



85.1270, -11.7818, 0.6182



95.3221, -15.0287, -0.3718



80.7853, -4.7689, -4.7091



40.0728, -4.7883, 0.7224



53.0575, -23.7335, -15.0835

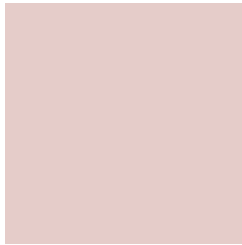


14.6845, -6.7812, -3.7157



# Previews

## White Background



This preview shows how the HunterLab color 80.0380, 3.6662, 8.4493 looks on a white background.

## Color Contrast Check

Large Text (above 18pt) WCAG AA × Fail

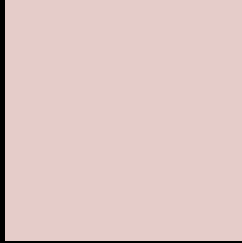
Any Text WCAG AA × Fail

Large Text (above 18pt) WCAG AAA × Fail

Any Text WCAG AAA × Fail



# Black Background



This preview shows how the HunterLab color 80.0380, 3.6662, 8.4493 looks on a black background.

## Color Contrast Check

Large Text (above 18pt) WCAG AA ✓ Pass

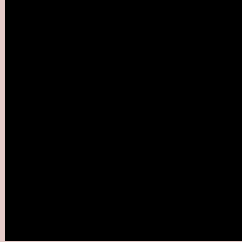
Any Text WCAG AA ✓ Pass

Large Text (above 18pt) WCAG AAA ✓ Pass

Any Text WCAG AAA ✓ Pass

If you want to check with other color combinations, try the [Color Contrast Checker](#).

## HunterLab 80.0380, 3.6662, 8.4493 Background



This preview shows how black text looks on a background with the HunterLab color 80.0380, 3.6662, 8.4493.



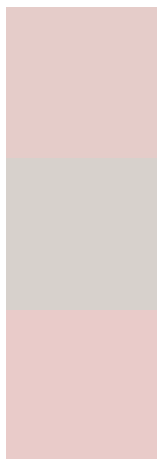
This preview shows how white text looks on a background with the HunterLab color 80.0380, 3.6662,

8.4493.

# Color Blindness Simulation

Color vision deficiency is a very complex topic, and I could not describe the different causes any better than Wikipedia does, so if you want to learn more, you should check out their [article about color blindness](#).

## Dichromacy



### Original Color

80.0380, 3.6662, 8.4493

### Protanopia

80.2544, -3.1602, 7.1932

### Deuteranopia

80.1577, 5.5897, 8.6179



## Tritanopia

80.1497, 8.0615, 0.9682

# Trichromacy



## Original Color

80.0380, 3.6662, 8.4493

## Protanomaly

80.0956, -0.6411, 7.5198

## Deuteranomaly

80.0529, 5.2380, 8.4937

## Tritanomaly

80.1486, 6.1657, 3.9058

# Monochromacy



## Original Color

80.0380, 3.6662, 8.4493

## Achromatopsia

80.7097, -4.3065, 4.3851

## Achromatomaly

80.3257, -1.1672, 5.9036

# CSS Examples

## Text

The CSS property to change the color of the text to HunterLab 80.0380, 3.6662, 8.4493 is called "color". The color property can be set on classes, ids or directly on the HTML element.

This example shows how text in the color `rgb(229, 204, 201)` looks like.

```
.text, #text, p{  
    color:rgb(229, 204, 201)  
}
```

If you want to add a text shadow in that color use the text-shadow property, you can generate a text shadow directly with our [CSS Text Shadow Generator](#).

Here you see how black text with a 4 pixel rgb(229, 204, 201) colored shadow looks like.

```
.shadow{ text-shadow: 4px 4px 2px rgb(229, 204, 201) }
```

## Border

The CSS property to change the border of an element to HunterLab 80.0380, 3.6662, 8.4493 is called "border". The border property can be set on classes, ids or directly on the HTML element.

This example shows the color as border, it can be applied via the CSS property "border" or "border-color".

```
.border, #border, table{ border:4px solid rgb(229, 204, 201) }
```



If only the border color should be changed use the property `border-color`.

```
.border{ border-color:rgb(229, 204, 201) }
```

If you want to add a box shadow in that color use:

Here you see how a box with a 4 pixel `rgb(229, 204, 201)` colored shadow looks like.

```
.boxshadow{ -moz-box-shadow:4px 4px 4px  
4px rgb(229, 204, 201); -webkit-box-  
shadow:4px 4px 4px 4px rgb(229, 204, 201);  
box-shadow:4px 4px 4px 4px rgb(229, 204,  
201) }
```

# Background

The CSS property to change the background color of an element to HunterLab 80.0380, 3.6662, 8.4493 is called "background". The background property can be set on classes, ids or directly on the HTML element.

```
.background, #background, body{  
background: rgb(229, 204, 201) }
```

If only the background color should be changed can be used:

```
.background{ background-color: rgb(229,  
204, 201) }
```

This example shows the color as background, it is applied via the CSS property "background".

To optimize and compress your CSS code, you can use our [online CSS compressor and optimizer](#) based on csstidy. If you want to create a linear or radial gradient as background or border, check our [CSS Gradient Generator](#).

Hey! You found this booklet interesting? Support Converting Colors with the new Membership Option!

The pro membership hides all ads, plus gives you double the colors in the color bucket, and more awesome pro features!

**[Learn more, Memberships starting at \\$2.50/m!](#)**

**Follow me  
on Twitter!**

@ConvertingColor