

Converting Colors

HunterLab(80.0411, 1.3364,
10.4380)

Have a look what the booklet for
HunterLab(80.0411, 1.3364,
10.4380) contains.

HunterLab(79.9141, 1.4809, 10.0778)	3
<i>Conversions</i>	4
<i>Details</i>	6
<i>Harmonies</i>	12
<i>Previews</i>	24
<i>Color Blindness Simulation</i>	28
<i>CSS Examples</i>	31

Color

**HunterLab(79.9141, 1.4809,
10.0778)**

Conversions

Conversions Part 1

Format	Color
Hex	E2CDC5
RGB	226, 205, 197
RGB Percent	89%, 80%, 77%
CMY	0.1137, 0.1961, 0.2274
CMYK	0.00, 0.09, 0.13, 0.11
HSL	17°, 33%, 83%
HSV	17°, 13%, 89%
XYZ	63.2734, 63.8626, 61.8152
YIQ	210.3670, 15.0840, 1.9640

Conversions

Conversions Part 2

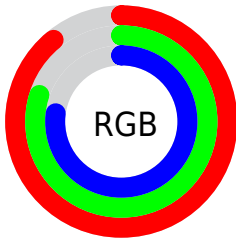
Format	Color
R _Y B	226, 208, 197
Decimal	14863813
CIE Lab	83.90, 6.00, 6.63
CIE LCh	84, 8.939, 47.844
Yxy	63.8655, 0.3349, 0.3380
Android (android.graphics.Color)	4293053893 (0xFFE2CDC5)
YUV	210.3670, -6.5899, 13.7101
Hunter-Lab	79.9141, 1.4809, 10.0778

Details

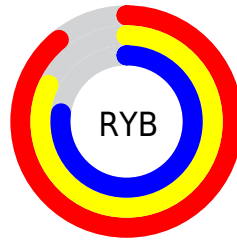
The HunterLab color $79.9141, 1.4809, 10.0778$ is a light color, and the websafe version is hex `CCCCCC`. A complement of this color would be $82.1601, -9.4608, -1.4625$, and the grayscale version is $80.4617, -4.2932, 4.3716$.

A 20% lighter version of the original color is $99.9679, -5.5118, 5.8916$, and $57.2489, 2.1434, 8.4009$ is the 20% darker color. If you saturate the color by 10%, you get $74.4865, 6.6378, 13.9762$, and if you desaturate by 10%, it is $85.5702, -3.3443, 5.9457$.

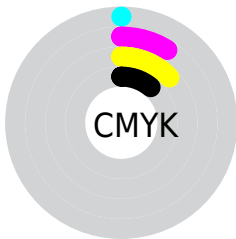
Distribution



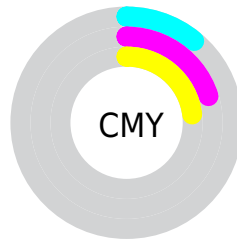
- Red (89%)
- Green (80%)
- Blue (77%)



- Red (89%)
- Yellow (82%)
- Blue (77%)



- Cyan (0%)
- Magenta (9%)
- Yellow (13%)
- Black (11%)



- Cyan (11%)
- Magenta (20%)
- Yellow (23%)

Brightness & Saturation Gradients

These gradients show how the HunterLab color 79.9141, 1.4809, 10.0778 changes by changing the brightness by 10 percent. The first figure shows a shift by +10% for each color and the second figure -10%.

Similar to the brightness gradients but the following saturation gradients show a change of the HunterLab color 79.9141, 1.4809, 10.0778 by changing the saturation by 10% instead.

■ 79.9141, 1.4809,
10.0778

■ 79.9141, 1.4809,
10.0778

209.4525, -3.3154,
19.4467

■ 68.2215, 1.8164,
9.1247

105.0796, 0.6691,
12.0370

■ 57.1608, 2.1044,
8.1851

118.4964, 0.2034,
13.0419

■ 46.7723, 2.3377,
7.2584

132.4401, -0.2998,
14.0646

■ 37.1028, 2.5097,
6.3413

146.8915, -0.8383,
15.1051

■ 28.2103, 2.6116,
5.4284

161.8334, -1.4106,
16.1637

■ 20.1698, 2.6308,
4.5104

177.2501, -2.0151,

■ 13.0835, 2.5483,

17.2401

3.5691

193.1275, -2.6504,
18.3345

6.5672, 3.6302,
4.5404

0.0000, NaN, NaN

79.9141, 1.4809,
10.0778

79.9141, 1.4809,
10.0778

74.4865, 6.6378,
13.9762

85.5702, -3.3443,
5.9457

69.3119, 12.1610,
17.5849

91.4243, -7.8631,
1.6163

64.4273, 18.0642,
20.8386

97.1243, -13.9607,
1.8494

59.8738, 24.3413,
23.6545

97.4212, -14.4265,
2.2002

■ 55.6983, 30.9481,
25.9342

■ 51.9523, 37.7820,
27.5709

■ 48.6885, 44.6617,
28.4671

■ 45.9551, 51.3132,
28.5730

■ 44.3343, 55.7134,
28.2939

Harmonies

Analogous

The Analogous color harmony consists of three colors that are next to each other on the color wheel.



79.9159, 3.9300, 6.7727



79.9141, 1.4809, 10.0778



79.9159, -2.4824, 11.8114

Triad

The Triadic color harmony groups three colors that are evenly spaced from another and form a triangle on the color wheel.



79.9159, 1.4786, 10.0791



79.9159, -12.3573, 6.0232



79.9159, -1.6642, -3.6807

Complementary

The Complementary color scheme is a pair of colors which are on the opposite of each other on the color wheel.



79.9141, 1.4809, 10.0778



82.1601, -9.4608, -1.4625

Split Complementary

Split-complementary colors differ from the complementary color scheme. The scheme consists of three colors, the original color and two neighbors of the complement color.



79.9159, -6.0388, -3.9083



79.9141, 1.4809, 10.0778



79.9159, -12.1490, 1.8490

Square

The Square scheme is like the rectangle color scheme, but the four colors are evenly spaced on the color wheel.



79.9159, 1.4786, 10.0791



79.9159, -10.4328, 9.5559



79.9159, -9.8574, -1.8373



79.9159, 2.0887, -1.2314

Rectangle

The Rectangle color scheme consists of four colors that form a rectangle on the color wheel.



79.9141, 1.4809, 10.0778



79.9159, -5.4177, 11.9059



79.9159, -9.8574, -1.8373



79.9159, -3.1126, -4.0242

Sweetspot

The Sweet Spot groups the original color and five complimentary colors.



79.9159, 1.4786, 10.0791



97.3339, -3.1929, 7.3969



78.2164, 9.2251, -2.0608



44.8011, -1.2878, 3.5911

0.0000, NaN, NaN



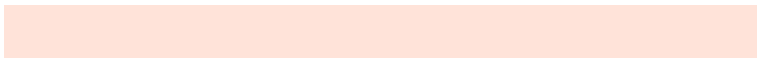
46.2646, -2.4686, 2.5136

Same Dimension

The Same Dimension uses a secret algorithm to generate beautiful new colors.



79.9159, 1.4786, 10.0791



90.2015, 3.0026, 12.5970



84.2530, -5.8442, 14.6408



37.8327, -0.0892, 4.0241



33.7409, 41.3280, 21.5145



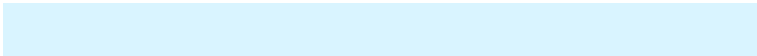
9.6790, 8.6773, 6.1161

Inverse Universe

The Inverse Universe completely reimagines the original color for something new.



82.1601, -9.4608, -1.4625



93.2211, -11.7235, -2.9348



77.7413, -2.2050, -7.0096



38.5995, -3.8244, 0.0819



42.9087, -10.7309, -30.4671



11.9322, -3.7354, -6.8506

Previews

White Background



This preview shows how the HunterLab color 79.9141, 1.4809, 10.0778 looks on a white background.

Color Contrast Check

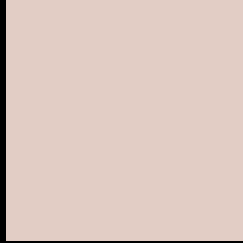
Large Text (above 18pt) WCAG AA × Fail

Any Text WCAG AA × Fail

Large Text (above 18pt) WCAG AAA × Fail

Any Text WCAG AAA × Fail

Black Background



This preview shows how the HunterLab color 79.9141, 1.4809, 10.0778 looks on a black background.

Color Contrast Check

Large Text (above 18pt) WCAG AA ✓ Pass

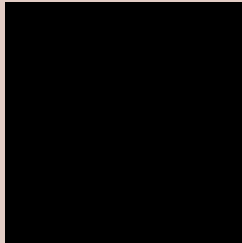
Any Text WCAG AA ✓ Pass

Large Text (above 18pt) WCAG AAA ✓ Pass

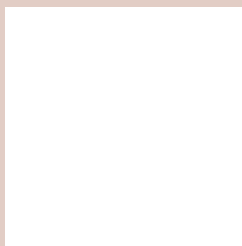
Any Text WCAG AAA ✓ Pass

If you want to check with other color combinations, try the [Color Contrast Checker](#).

HunterLab 79.9141, 1.4809, 10.0778 Background



This preview shows how black text looks on a background with the HunterLab color 79.9141, 1.4809, 10.0778.

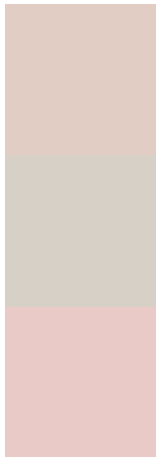


This preview shows how white text looks on a background with the HunterLab color 79.9141, 1.4809,

Color Blindness Simulation

Color vision deficiency is a very complex topic, and I could not describe the different causes any better than Wikipedia does, so if you want to learn more, you should check out their [article about color blindness](#).

Dichromacy



Original Color

79.9141, 1.4809, 10.0778

Protanopia

79.8012, -3.4551, 8.9678

Deuteranopia

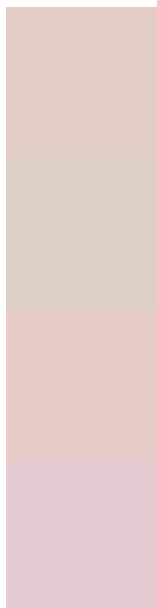
79.8816, 6.0015, 9.6736



Tritanopia

79.9756, 7.5476, 0.2392

Trichromacy



Original Color

79.9141, 1.4809, 10.0778

Protanomaly

79.8517, -1.7736, 9.5042

Deuteranomaly

79.8611, 4.4178, 9.6231

Tritanomaly

79.9118, 5.3092, 4.0959

Monochromacy



Original Color

79.9141, 1.4809, 10.0778

Achromatopsia

80.2795, -4.2835, 4.3617

Achromatomaly

80.0740, -2.1556, 6.5374

CSS Examples

Text

The CSS property to change the color of the text to HunterLab 79.9141, 1.4809, 10.0778 is called "color". The color property can be set on classes, ids or directly on the HTML element.

This example shows how text in the color `rgb(226, 205, 197)` looks like.

```
.text, #text, p{  
    color:rgb(226, 205, 197)  
}
```

If you want to add a text shadow in that color use the text-shadow property, you can generate a text shadow directly with our [CSS Text Shadow Generator](#).

Here you see how black text with a 4 pixel rgb(226, 205, 197) colored shadow looks like.

```
.shadow{ text-shadow: 4px 4px 2px rgb(226, 205, 197) }
```

Border

The CSS property to change the border of an element to HunterLab 79.9141, 1.4809, 10.0778 is called "border". The border property can be set on classes, ids or directly on the HTML element.

This example shows the color as border, it can be applied via the CSS property "border" or "border-color".

```
.border, #border, table{ border:4px solid rgb(226, 205, 197) }
```


If only the border color should be changed use the property `border-color`.

```
.border{ border-color:rgb(226, 205, 197) }
```

If you want to add a box shadow in that color use:

Here you see how a box with a 4 pixel `rgb(226, 205, 197)` colored shadow looks like.

```
.boxshadow{ -moz-box-shadow:4px 4px 4px  
4px rgb(226, 205, 197); -webkit-box-  
shadow:4px 4px 4px 4px rgb(226, 205, 197);  
box-shadow:4px 4px 4px 4px rgb(226, 205,  
197) }
```

Background

The CSS property to change the background color of an element to HunterLab 79.9141, 1.4809, 10.0778 is called "background". The background property can be set on classes, ids or directly on the HTML element.

```
.background, #background, body{  
background: rgb(226, 205, 197) }
```

If only the background color should be changed can be used:

```
.background{ background-color: rgb(226,  
205, 197) }
```

This example shows the color as background, it is applied via the CSS property "background".

To optimize and compress your CSS code, you can use our [online CSS compressor and optimizer](#) based on csstidy. If you want to create a linear or radial gradient as background or border, check our [CSS Gradient Generator](#).

Hey! You found this booklet interesting? Support Converting Colors with the new Membership Option!

The pro membership hides all ads, plus gives you double the colors in the color bucket, and more awesome pro features!

[Learn more, Memberships starting at \\$2.50/m!](#)

**Follow me
on Twitter!**

@ConvertingColor