

Converting Colors

HunterLab(80.0481, -1.5619,
11.0687)

Have a look what the booklet for
HunterLab(80.0481, -1.5619,
11.0687) contains.

HunterLab(79.9612, -1.5678, 10.9616)	3
<i>Conversions</i>	4
<i>Details</i>	6
<i>Harmonies</i>	12
<i>Previews</i>	24
<i>Color Blindness Simulation</i>	28
<i>CSS Examples</i>	31

Color

**HunterLab(79.9612, -1.5678,
10.9616)**

Conversions

Conversions Part 1

Format	Color
Hex	DDCFC3
RGB	221, 207, 195
RGB Percent	87%, 81%, 76%
CMY	0.1333, 0.1882, 0.2353
CMYK	0.00, 0.06, 0.12, 0.13
HSL	28°, 28%, 82%
HSV	28°, 12%, 87%
XYZ	61.9819, 63.9379, 60.7042
YIQ	209.8180, 12.1960, -0.7640

Conversions

Conversions Part 2

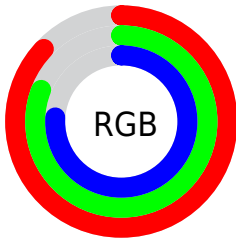
Format	Color
R _Y B	221, 217, 195
Decimal	14536643
CIE Lab	83.93, 2.84, 7.69
CIE LCh	84, 8.200, 69.738
Yxy	63.9408, 0.3321, 0.3426
Android (android.graphics.Color)	4292726723 (0xFFDDCFC3)
YUV	209.8180, -7.3053, 9.8066
Hunter-Lab	79.9612, -1.5678, 10.9616

Details

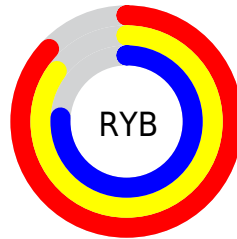
The HunterLab color $79.9612, -1.5678, 10.9616$ is a light color, and the websafe version is hex `CCCCCC`. A complement of this color would be $79.0078, -6.4191, -2.7632$, and the grayscale version is $80.2294, -4.2808, 4.3590$.

A 20% lighter version of the original color is $99.9041, -5.8614, 6.8020$, and $57.2822, -0.7614, 9.2012$ is the 20% darker color. If you saturate the color by 10%, you get $75.8054, 1.3045, 15.8511$, and if you desaturate by 10%, it is $84.2610, -4.1192, 5.6090$.

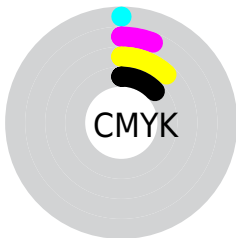
Distribution



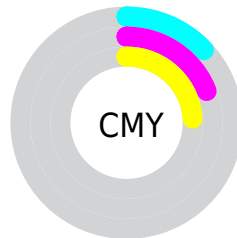
- Red (87%)
- Green (81%)
- Blue (76%)



- Red (87%)
- Yellow (85%)
- Blue (76%)



- Cyan (0%)
- Magenta (6%)
- Yellow (12%)
- Black (13%)



- Cyan (13%)
- Magenta (19%)
- Yellow (24%)

Brightness & Saturation Gradients

These gradients show how the HunterLab color 79.9612, -1.5678, 10.9616 changes by changing the brightness by 10 percent. The first figure shows a shift by +10% for each color and the second figure -10%.

Similar to the brightness gradients but the following saturation gradients show a change of the HunterLab color 79.9612, -1.5678, 10.9616 by changing the saturation by 10% instead.

■ 79.9612, -1.5678,
10.9616

■ 79.9612, -1.5678,
10.9616

209.5175, -7.4787,
20.7146

■ 68.2662, -1.0821,
9.9551

105.1312, -2.6596,
13.0190

■ 57.2029, -0.6357,
8.9588

118.5501, -3.2568,
14.0695

■ 46.8117, -0.2345,
7.9710

132.4958, -3.8867,
15.1359

■ 37.1392, 0.1172,
6.9875

146.9492, -4.5477,
16.2185

■ 28.2436, 0.4133,
6.0012

161.8930, -5.2385,
17.3176

■ 20.1996, 0.6454,
5.0002

177.3115, -5.9579,

■ 13.1093, 0.8009,

18.4333

3.9618

193.1907, -6.7050,
19.5656

■ 6.6001, 1.5223,
4.6201

0.0000, NaN, NaN

■ 79.9612, -1.5678,
10.9616

■ 79.9612, -1.5678,
10.9616

■ 75.8054, 1.3045,
15.8511

■ 84.2610, -4.1192,
5.6090

■ 71.8017, 4.5300,
20.2167

■ 88.6878, -6.3693,
-0.1597

■ 67.9667, 8.1295,
23.9962

■ 93.0113, -9.5693,
-3.1621

■ 64.3166, 12.1205,
27.1221

■ 96.8772, -15.6851,
1.5196

■ 60.8693, 16.5100,
29.5259

■ 97.0115, -15.8936,
1.6789

■ 57.6436, 21.2892,
31.1452

■ 54.6583, 26.4250,
31.9360

■ 51.9310, 31.8504,
31.8940

■ 49.8820, 36.4277,
31.3748

Harmonies

Analogous

The Analogous color harmony consists of three colors that are next to each other on the color wheel.



79.9630, 1.7747, 8.9225



79.9612, -1.5678, 10.9616



79.9630, -5.5773, 11.2814

Triad

The Triadic color harmony groups three colors that are evenly spaced from another and form a triangle on the color wheel.



79.9630, -1.5700, 10.9628



79.9630, -11.7648, 3.0958



79.9630, 0.7428, -1.5250

Complementary

The Complementary color scheme is a pair of colors which are on the opposite of each other on the color wheel.



79.9612, -1.5678, 10.9616



79.0078, -6.4191, -2.7632

Split Complementary

Split-complementary colors differ from the complementary color scheme. The scheme consists of three colors, the original color and two neighbors of the complement color.



79.9630, -2.9561, -3.2577



79.9612, -1.5678, 10.9616



79.9630, -10.1420, -0.5040

Square

The Square scheme is like the rectangle color scheme, but the four colors are evenly spaced on the color wheel.



79.9630, -1.5700, 10.9628



79.9630, -11.4104, 6.8632



79.9630, -6.9364, -2.8750



79.9630, 3.1282, 1.7579

Rectangle

The Rectangle color scheme consists of four colors that form a rectangle on the color wheel.



79.9612, -1.5678, 10.9616



79.9630, -8.0780, 10.4915



79.9630, -6.9364, -2.8750



79.9630, -0.3912, -2.3152

Sweetspot

The Sweet Spot groups the original color and five complimentary colors.



79.9630, -1.5700, 10.9628



97.9321, -4.1963, 8.0689



76.8255, 7.0079, 0.7580



45.1293, -1.8393, 3.9582

0.0000, NaN, NaN



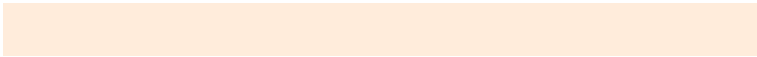
46.2646, -2.4686, 2.5136

Same Dimension

The Same Dimension uses a secret algorithm to generate beautiful new colors.



79.9630, -1.5700, 10.9628



92.8742, -1.0882, 14.2937



83.8701, -8.0416, 15.0405



37.4664, -1.0152, 4.5133



38.3090, 27.0579, 24.0795



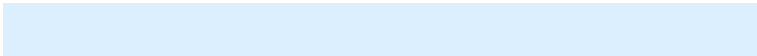
10.5922, 4.9542, 6.6136

Inverse Universe

The Inverse Universe completely reimagines the original color for something new.



79.0078, -6.4191, -2.7632



91.5300, -7.9091, -5.0218



75.1258, 0.0788, -7.6941



37.1112, -2.8188, -0.5903



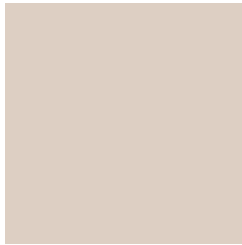
33.0475, 4.4222, -50.8528



9.3772, -0.5611, -10.5094

Previews

White Background



This preview shows how the HunterLab color 79.9612, -1.5678, 10.9616 looks on a white background.

Color Contrast Check

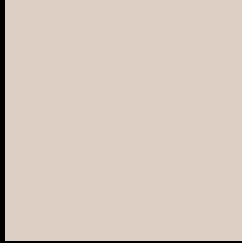
Large Text (above 18pt) WCAG AA × Fail

Any Text WCAG AA × Fail

Large Text (above 18pt) WCAG AAA × Fail

Any Text WCAG AAA × Fail

Black Background



This preview shows how the HunterLab color 79.9612, -1.5678, 10.9616 looks on a black background.

Color Contrast Check

Large Text (above 18pt) WCAG AA ✓ Pass

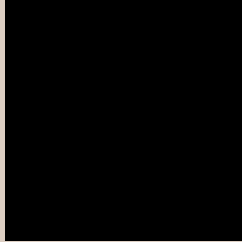
Any Text WCAG AA ✓ Pass

Large Text (above 18pt) WCAG AAA ✓ Pass

Any Text WCAG AAA ✓ Pass

If you want to check with other color combinations, try the [Color Contrast Checker](#).

HunterLab 79.9612, -1.5678, 10.9616 Background



This preview shows how black text looks on a background with the HunterLab color 79.9612, -1.5678, 10.9616.



This preview shows how white text looks on a background with the HunterLab color 79.9612, -1.5678,

Color Blindness Simulation

Color vision deficiency is a very complex topic, and I could not describe the different causes any better than Wikipedia does, so if you want to learn more, you should check out their [article about color blindness](#).

Dichromacy



Original Color

79.9612, -1.5678, 10.9616

Protanopia

80.1158, -4.1077, 10.6461

Deuteranopia

79.8242, 5.6942, 10.4968



Tritanopia

79.7958, 5.4972, -0.5297

Trichromacy



Original Color

79.9612, -1.5678, 10.9616

Protanomaly

80.0017, -2.9332, 10.5412

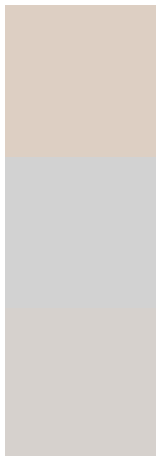
Deuteranomaly

79.8932, 2.8868, 10.5237

Tritanomaly

79.7037, 3.0814, 3.8106

Monochromacy



Original Color

79.9612, -1.5678, 10.9616

Achromatopsia

80.2795, -4.2835, 4.3617

Achromatomaly

80.1903, -3.3222, 6.6507

CSS Examples

Text

The CSS property to change the color of the text to HunterLab 79.9612, -1.5678, 10.9616 is called "color". The color property can be set on classes, ids or directly on the HTML element.

This example shows how text in the color `rgb(221, 207, 195)` looks like.

```
.text, #text, p{  
    color:rgb(221, 207, 195)  
}
```

If you want to add a text shadow in that color use the text-shadow property, you can generate a text shadow directly with our [CSS Text Shadow Generator](#).

Here you see how black text with a 4 pixel rgb(221, 207, 195) colored shadow looks like.

```
.shadow{ text-shadow: 4px 4px 2px rgb(221, 207, 195) }
```

Border

The CSS property to change the border of an element to HunterLab 79.9612, -1.5678, 10.9616 is called "border". The border property can be set on classes, ids or directly on the HTML element.

This example shows the color as border, it can be applied via the CSS property "border" or "border-color".

```
.border, #border, table{ border:4px solid rgb(221, 207, 195) }
```


If only the border color should be changed use the property `border-color`.

```
.border{ border-color:rgb(221, 207, 195) }
```

If you want to add a box shadow in that color use:

Here you see how a box with a 4 pixel `rgb(221, 207, 195)` colored shadow looks like.

```
.boxshadow{ -moz-box-shadow:4px 4px 4px  
4px rgb(221, 207, 195); -webkit-box-  
shadow:4px 4px 4px 4px rgb(221, 207, 195);  
box-shadow:4px 4px 4px 4px rgb(221, 207,  
195) }
```

Background

The CSS property to change the background color of an element to HunterLab 79.9612, -1.5678, 10.9616 is called "background". The background property can be set on classes, ids or directly on the HTML element.

```
.background, #background, body{  
background: rgb(221, 207, 195) }
```

If only the background color should be changed can be used:

```
.background{ background-color: rgb(221,  
207, 195) }
```

This example shows the color as background, it is applied via the CSS property "background".

To optimize and compress your CSS code, you can use our [online CSS compressor and optimizer](#) based on csstidy. If you want to create a linear or radial gradient as background or border, check our [CSS Gradient Generator](#).

Hey! You found this booklet interesting? Support Converting Colors with the new Membership Option!

The pro membership hides all ads, plus gives you double the colors in the color bucket, and more awesome pro features!

[Learn more, Memberships starting at \\$2.50/m!](#)

**Follow me
on Twitter!**

@ConvertingColor