

Converting Colors

HunterLab(80.0521, -0.2676,
13.0313)

Have a look what the booklet for
HunterLab(80.0521, -0.2676,
13.0313) contains.

HunterLab(80.0182, -0.0981, 13.2092)	3
<i>Conversions</i>	4
<i>Details</i>	6
<i>Harmonies</i>	12
<i>Previews</i>	24
<i>Color Blindness Simulation</i>	28
<i>CSS Examples</i>	31

Color

**HunterLab(80.0182, -0.0981,
13.2092)**

Conversions

Conversions Part 1

Format	Color
Hex	E2CEBE
RGB	226, 206, 190
RGB Percent	89%, 81%, 75%
CMY	0.1137, 0.1921, 0.2549
CMYK	0.00, 0.09, 0.16, 0.11
HSL	27°, 38%, 82%
HSV	27°, 16%, 89%
XYZ	62.7297, 64.0291, 57.7680
YIQ	210.1560, 17.0560, -0.7360

Conversions

Conversions Part 2

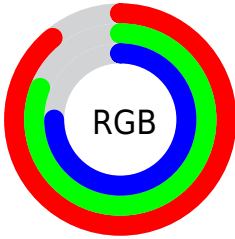
Format	Color
R _Y B	226, 219, 190
Decimal	14864062
CIE Lab	83.98, 4.37, 10.47
CIE LCh	84, 11.349, 67.343
Yxy	64.0320, 0.3399, 0.3470
Android (android.graphics.Color)	4293054142 (0xFFE2CEBE)
YUV	210.1560, -9.9369, 13.8952
Hunter-Lab	80.0182, -0.0981, 13.2092

Details

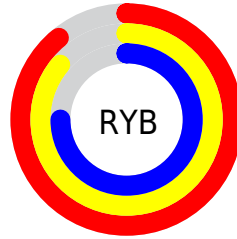
The HunterLab color $80.0182, -0.0981, 13.2092$ is a light color, and the websafe version is hex `CCCCCC`. A complement of this color would be $79.0760, -7.4378, -5.3526$, and the grayscale version is $80.3843, -4.2891, 4.3674$.

A 20% lighter version of the original color is $99.7165, -6.8910, 9.4830$, and $57.2788, 0.4855, 10.8056$ is the 20% darker color. If you saturate the color by 10%, you get $75.7061, 3.1981, 17.9213$, and if you desaturate by 10%, it is $84.4901, -3.0539, 8.0196$.

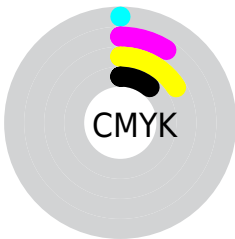
Distribution



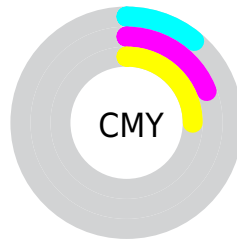
- Red (89%)
- Green (81%)
- Blue (75%)



- Red (89%)
- Yellow (86%)
- Blue (75%)



- Cyan (0%)
- Magenta (9%)
- Yellow (16%)
- Black (11%)



- Cyan (11%)
- Magenta (19%)
- Yellow (25%)

Brightness & Saturation Gradients

These gradients show how the HunterLab color 80.0182, -0.0981, 13.2092 changes by changing the brightness by 10 percent. The first figure shows a shift by +10% for each color and the second figure -10%.

Similar to the brightness gradients but the following saturation gradients show a change of the HunterLab color 80.0182, -0.0981, 13.2092 by changing the saturation by 10% instead.

80.0182, -0.0981,
13.2092

80.0182, -0.0981,
13.2092

209.5961, -5.4693,
23.9767

68.3203, 0.3147,
12.0613

105.1936, -1.0543,
15.5265

57.2539, 0.6843,
10.9141

118.6151, -1.5878,
16.6978

46.8594, 1.0040,
9.7637

132.5633, -2.1563,
17.8797

37.1834, 1.2684,
8.6029

147.0190, -2.7580,
19.0734

28.2839, 1.4701,
7.4202

161.9651, -3.3915,
20.2794

20.2356, 1.5986,
6.1966

177.3859, -4.0552,

13.1405, 1.6380,

21.4984

4.8973

193.2672, -4.7482,
22.7307

■ 6.6399, 2.5143,
4.6479

0.0000, NaN, NaN

■ 80.0182, -0.0981,
13.2092

■ 80.0182, -0.0981,
13.2092

■ 75.7061, 3.1981,
17.9213

■ 84.4901, -3.0539,
8.0196

■ 71.5640, 6.8679,
22.0904

■ 89.1027, -5.6899,
2.4037

■ 67.6110, 10.9306,
25.6492

■ 93.7489, -8.5702,
-2.2156

■ 63.8663, 15.3996,
28.5247

■ 97.4212, -14.4265,
2.2002

■ 60.3507, 20.2742,
30.6447

■ 57.0858, 25.5313,
31.9467

■ 54.0932, 31.1164,
32.3944

■ 51.3918, 36.9299,
32.0091

■ 50.3725, 39.3000,
31.7273

Harmonies

Analogous

The Analogous color harmony consists of three colors that are next to each other on the color wheel.



80.0200, 4.4324, 10.3005



80.0182, -0.0981, 13.2092



80.0200, -5.6401, 13.8282

Triad

The Triadic color harmony groups three colors that are evenly spaced from another and form a triangle on the color wheel.



80.0200, -0.1005, 13.2104



80.0200, -14.6357, 3.0407



80.0200, 2.3362, -4.1874

Complementary

The Complementary color scheme is a pair of colors which are on the opposite of each other on the color wheel.



80.0182, -0.0981, 13.2092



79.0760, -7.4378, -5.3526

Split Complementary

Split-complementary colors differ from the complementary color scheme. The scheme consists of three colors, the original color and two neighbors of the complement color.



80.0200, -2.8986, -6.4381



80.0182, -0.0981, 13.2092



80.0200, -12.6233, -2.0834

Square

The Square scheme is like the rectangle color scheme, but the four colors are evenly spaced on the color wheel.



80.0200, -0.1005, 13.2104



80.0200, -13.9328, 8.1870



80.0200, -8.3636, -5.6430



80.0200, 5.8659, 0.3251

Rectangle

The Rectangle color scheme consists of four colors that form a rectangle on the color wheel.



80.0182, -0.0981, 13.2092



80.0200, -9.1408, 12.8986



80.0200, -8.3636, -5.6430



80.0200, 0.7121, -5.2471

Sweetspot

The Sweet Spot groups the original color and five complimentary colors.



80.0200, -0.1005, 13.2104



97.3501, -3.7868, 8.6384



75.9406, 11.5695, -0.8121



44.8678, -1.6479, 4.2005

0.0000, NaN, NaN



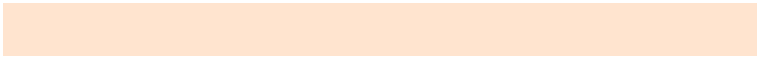
46.2646, -2.4686, 2.5136

Same Dimension

The Same Dimension uses a secret algorithm to generate beautiful new colors.



80.0200, -0.1005, 13.2104



90.1548, 1.0500, 16.9389



85.4305, -9.0793, 18.6732



38.3387, -0.9500, 4.5753



38.3464, 28.9404, 24.1355



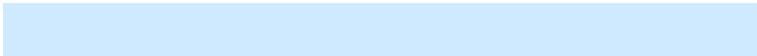
10.9349, 5.6505, 6.8370

Inverse Universe

The Inverse Universe completely reimagines the original color for something new.



79.0760, -7.4378, -5.3526



88.8594, -9.0104, -8.5285



73.6983, 1.5788, -12.4451



38.0782, -2.9768, -0.5480



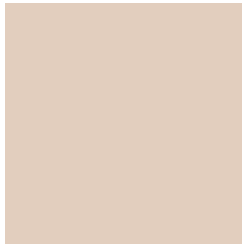
34.3765, 3.0544, -49.5611



9.9846, -0.7981, -10.7569

Previews

White Background



This preview shows how the HunterLab color 80.0182, -0.0981, 13.2092 looks on a white background.

Color Contrast Check

Large Text (above 18pt) WCAG AA × Fail

Any Text WCAG AA × Fail

Large Text (above 18pt) WCAG AAA × Fail

Any Text WCAG AAA × Fail

Black Background



This preview shows how the HunterLab color 80.0182, -0.0981, 13.2092 looks on a black background.

Color Contrast Check

Large Text (above 18pt) WCAG AA ✓ Pass

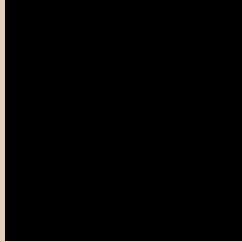
Any Text WCAG AA ✓ Pass

Large Text (above 18pt) WCAG AAA ✓ Pass

Any Text WCAG AAA ✓ Pass

If you want to check with other color combinations, try the [Color Contrast Checker](#).

HunterLab 80.0182, -0.0981, 13.2092 Background



This preview shows how black text looks on a background with the HunterLab color 80.0182, -0.0981, 13.2092.



This preview shows how white text looks on a background with the HunterLab color 80.0182, -0.0981, 13.2092.

Color Blindness Simulation

Color vision deficiency is a very complex topic, and I could not describe the different causes any better than Wikipedia does, so if you want to learn more, you should check out their [article about color blindness](#).

Dichromacy



Original Color

80.0182, -0.0981, 13.2092

Protanopia

80.0714, -4.5419, 12.7624

Deuteranopia

80.0045, 6.0183, 12.8756



Tritanopia

80.0787, 7.8907, 0.3720

Trichromacy



Original Color

80.0182, -0.0981, 13.2092

Protanomaly

80.0556, -3.0264, 12.7721

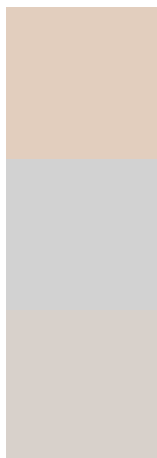
Deuteranomaly

79.8731, 4.0629, 12.7003

Tritanomaly

79.9525, 5.3217, 5.1069

Monochromacy



Original Color

80.0182, -0.0981, 13.2092

Achromatopsia

80.2795, -4.2835, 4.3617

Achromatomaly

80.3191, -2.9955, 7.7327

CSS Examples

Text

The CSS property to change the color of the text to HunterLab 80.0182, -0.0981, 13.2092 is called "color". The color property can be set on classes, ids or directly on the HTML element.

This example shows how text in the color `rgb(226, 206, 190)` looks like.

```
.text, #text, p{  
    color:rgb(226, 206, 190)  
}
```

If you want to add a text shadow in that color use the text-shadow property, you can generate a text shadow directly with our [CSS Text Shadow Generator](#).

Here you see how black text with a 4 pixel rgb(226, 206, 190) colored shadow looks like.

```
.shadow{ text-shadow: 4px 4px 2px rgb(226, 206, 190) }
```

Border

The CSS property to change the border of an element to HunterLab 80.0182, -0.0981, 13.2092 is called "border". The border property can be set on classes, ids or directly on the HTML element.

This example shows the color as border, it can be applied via the CSS property "border" or "border-color".

```
.border, #border, table{ border:4px solid rgb(226, 206, 190) }
```


If only the border color should be changed use the property `border-color`.

```
.border{ border-color:rgb(226, 206, 190) }
```

If you want to add a box shadow in that color use:

Here you see how a box with a 4 pixel `rgb(226, 206, 190)` colored shadow looks like.

```
.boxshadow{ -moz-box-shadow:4px 4px 4px  
4px rgb(226, 206, 190); -webkit-box-  
shadow:4px 4px 4px 4px rgb(226, 206, 190);  
box-shadow:4px 4px 4px 4px rgb(226, 206,  
190) }
```

Background

The CSS property to change the background color of an element to HunterLab 80.0182, -0.0981, 13.2092 is called "background". The background property can be set on classes, ids or directly on the HTML element.

```
.background, #background, body{  
background: rgb(226, 206, 190) }
```

If only the background color should be changed can be used:

```
.background{ background-color: rgb(226,  
206, 190) }
```

This example shows the color as background, it is applied via the CSS property "background".

To optimize and compress your CSS code, you can use our [online CSS compressor and optimizer](#) based on csstidy. If you want to create a linear or radial gradient as background or border, check our [CSS Gradient Generator](#).

Hey! You found this booklet interesting? Support Converting Colors with the new Membership Option!

The pro membership hides all ads, plus gives you double the colors in the color bucket, and more awesome pro features!

[Learn more, Memberships starting at \\$2.50/m!](#)

**Follow me
on Twitter!**

@ConvertingColor