

Converting Colors

HunterLab(80.0658, 23.9961,
-3.3653)

Have a look what the booklet for
HunterLab(80.0658, 23.9961,
-3.3653) contains.

HunterLab(80.0079, 24.1862, -3.5959)	3
<i>Conversions</i>	4
<i>Details</i>	6
<i>Harmonies</i>	12
<i>Previews</i>	24
<i>Color Blindness Simulation</i>	28
<i>CSS Examples</i>	31

Color

**HunterLab(80.0079, 24.1862,
-3.5959)**

Conversions

Conversions Part 1

Format	Color
Hex	FFBFE2
RGB	255, 191, 226
RGB Percent	100%, 75%, 89%
CMY	0.0000, 0.2510, 0.1137
CMYK	0.00, 0.25, 0.11, 0.00
HSL	327°, 100%, 87%
HSV	327°, 25%, 100%
XYZ	73.5983, 64.0126, 80.4282
YIQ	214.1260, 26.9090, 24.4530

Conversions

Conversions Part 2

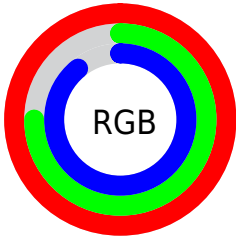
Format	Color
R _Y B	255, 191, 226
Decimal	16760802
CIE Lab	83.97, 28.22, -8.42
CIE LCh	84, 29.454, 343.380
Yxy	64.0153, 0.3375, 0.2936
Android (android.graphics.Color)	4294950882 (0xFFFFBFE2)
YUV	214.1260, 5.8539, 35.8465
Hunter-Lab	80.0079, 24.1862, -3.5959

Details

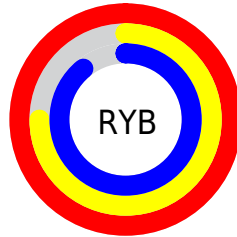
The HunterLab color $80.0079, 24.1862, -3.5959$ is a light color, and the websafe version is hex FFCCFF . A complement of this color would be $93.6828, -30.2525, 14.3428$, and the grayscale version is $82.0258, -4.3767, 4.4566$.

A 20% lighter version of the original color is $97.7828, -1.6112, 2.8603$, and $57.3039, 23.0245, -4.1500$ is the 20% darker color. If you saturate the color by 10%, you get $72.9596, 36.1942, -6.3509$, and if you desaturate by 10%, it is $87.6233, 12.2640, -0.2946$.

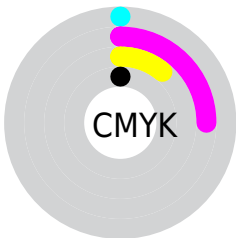
Distribution



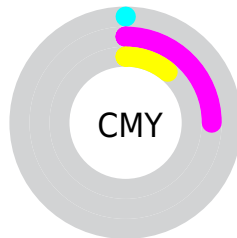
- Red (100%)
- Green (75%)
- Blue (89%)



- Red (100%)
- Yellow (75%)
- Blue (89%)



- Cyan (0%)
- Magenta (25%)
- Yellow (11%)
- Black (0%)



- Cyan (0%)
- Magenta (25%)
- Yellow (11%)

Brightness & Saturation Gradients

These gradients show how the HunterLab color 80.0079, 24.1862, -3.5959 changes by changing the brightness by 10 percent. The first figure shows a shift by +10% for each color and the second figure -10%.

Similar to the brightness gradients but the following saturation gradients show a change of the HunterLab color 80.0079, 24.1862, -3.5959 by changing the saturation by 10% instead.

80.0079, 24.1862,
-3.5959

80.0079, 24.1862,
-3.5959

209.5817, 26.8542,
0.6974

68.3104, 23.5399,
-3.8636

105.1822, 25.2235,
-2.9136

57.2446, 22.8038,
-4.0800

118.6032, 25.6342,
-2.5081

46.8507, 21.9645,
-4.2385

132.5510, 25.9790,
-2.0627

37.1753, 21.0097,
-4.3332

147.0063, 26.2624,
-1.5795

28.2765, 19.9255,
-4.3559

161.9519, 26.4885,
-1.0603

20.2290, 18.6982,
-4.2970

177.3723, 26.6605,

13.1348, 17.3251,

-0.5068

-4.1446

193.2532, 26.7815,
0.0795

■ 6.6326, 18.9641,
-4.9375

0.0000, INF, NaN

■ 80.0079, 24.1862,
-3.5959

■ 80.0079, 24.1862,
-3.5959

■ 72.9596, 36.1942,
-6.3509

■ 87.6233, 12.2640,
-0.2946

■ 66.5767, 48.0725,
-8.3895

■ 95.7154, 0.5450,
3.4165

■ 60.9799, 59.4195,
-9.4969

100.0000, -5.3358,
5.4332

■ 56.2957, 69.6235,
-9.4450

■ 52.6373, 77.8974,
-8.0531

■ 50.0696, 83.4676,
-5.2836

■ 48.5626, 85.9243,
-1.3336

■ 48.1011, 86.2771,
0.8307

Harmonies

Analogous

The Analogous color harmony consists of three colors that are next to each other on the color wheel.



80.0096, 15.7556, -17.3786



80.0079, 24.1862, -3.5959



80.0096, 24.6460, 10.2432

Triad

The Triadic color harmony groups three colors that are evenly spaced from another and form a triangle on the color wheel.



80.0096, 24.1831, -3.5945



80.0096, -10.6131, 26.0696



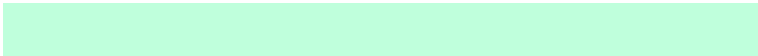
80.0096, -23.5155, -16.0487

Complementary

The Complementary color scheme is a pair of colors which are on the opposite of each other on the color wheel.



80.0079, 24.1862, -3.5959



93.6828, -30.2525, 14.3428

Split Complementary

Split-complementary colors differ from the complementary color scheme. The scheme consists of three colors, the original color and two neighbors of the complement color.



80.0096, -29.5916, -2.0175



80.0079, 24.1862, -3.5959



80.0096, -22.5075, 21.3087

Square

The Square scheme is like the rectangle color scheme, but the four colors are evenly spaced on the color wheel.



80.0096, 24.1831, -3.5945



80.0096, 3.8446, 25.7994



80.0096, -29.2362, 11.5644



80.0096, -12.0801, -25.3978

Rectangle

The Rectangle color scheme consists of four colors that form a rectangle on the color wheel.



80.0079, 24.1862, -3.5959



80.0096, 20.3213, 17.5964



80.0096, -29.2362, 11.5644



80.0096, -26.2149, -11.6252

Sweetspot

The Sweet Spot groups the original color and five complimentary colors.



80.0096, 24.1831, -3.5945



93.3203, 3.9248, 2.3026



77.2459, 17.6513, -24.7085



42.6067, 2.6294, 0.8034

0.0000, NaN, NaN



46.2646, -2.4686, 2.5136

Same Dimension

The Same Dimension uses a secret algorithm to generate beautiful new colors.



80.0096, 24.1831, -3.5945



76.4756, 30.0728, -5.0240



79.0117, 19.0411, 10.6297



42.6067, 2.6294, 0.8034



34.8141, 62.5253, -0.0238



10.9643, 19.8759, -1.4364

Inverse Universe

The Inverse Universe completely reimagines the original color for something new.



80.0096, 24.1831, -3.5945



76.4756, 30.0728, -5.0240



94.6640, -24.6435, 0.3227



42.6067, 2.6294, 0.8034



34.8141, 62.5253, -0.0238



10.9643, 19.8759, -1.4364

Previews

White Background



This preview shows how the HunterLab color 80.0079, 24.1862, -3.5959 looks on a white background.

Color Contrast Check

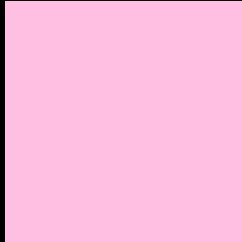
Large Text (above 18pt) WCAG AA × Fail

Any Text WCAG AA × Fail

Large Text (above 18pt) WCAG AAA × Fail

Any Text WCAG AAA × Fail

Black Background



This preview shows how the HunterLab color 80.0079, 24.1862, -3.5959 looks on a black background.

Color Contrast Check

Large Text (above 18pt) WCAG AA ✓ Pass

Any Text WCAG AA ✓ Pass

Large Text (above 18pt) WCAG AAA ✓ Pass

Any Text WCAG AAA ✓ Pass

If you want to check with other color combinations, try the [Color Contrast Checker](#).

HunterLab 80.0079, 24.1862, -3.5959 Background



This preview shows how black text looks on a background with the HunterLab color 80.0079, 24.1862, -3.5959.



This preview shows how white text looks on a background with the HunterLab color 80.0079, 24.1862, -3.5959.

-3.5959.

Color Blindness Simulation

Color vision deficiency is a very complex topic, and I could not describe the different causes any better than Wikipedia does, so if you want to learn more, you should check out their [article about color blindness](#).

Dichromacy



Original Color

80.0079, 24.1862, -3.5959

Protanopia

80.1282, 0.1613, -9.9070

Deuteranopia

80.2589, 5.8628, -2.5385



Tritanopia

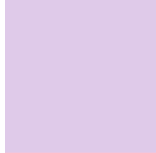
80.0435, 18.9442, 4.9726

Trichromacy



Original Color

80.0079, 24.1862, -3.5959



Protanomaly

79.8826, 8.2654, -7.8500



Deuteranomaly

79.9658, 12.4636, -3.3233



Tritanomaly

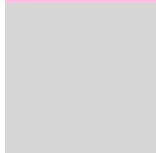
80.0731, 20.8407, 2.1021

Monochromacy



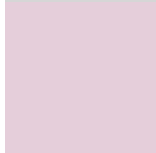
Original Color

80.0079, 24.1862, -3.5959



Achromatopsia

82.0026, -4.3755, 4.4554



Achromatomaly

81.1558, 5.4286, 1.6443

CSS Examples

Text

The CSS property to change the color of the text to HunterLab 80.0079, 24.1862, -3.5959 is called "color". The color property can be set on classes, ids or directly on the HTML element.

This example shows how text in the color `rgb(255, 191, 226)` looks like.

```
.text, #text, p{  
    color:rgb(255, 191, 226)  
}
```

If you want to add a text shadow in that color use the text-shadow property, you can generate a text shadow directly with our [CSS Text Shadow Generator](#).

Here you see how black text with a 4 pixel rgb(255, 191, 226) colored shadow looks like.

```
.shadow{ text-shadow: 4px 4px 2px rgb(255, 191, 226) }
```

Border

The CSS property to change the border of an element to HunterLab 80.0079, 24.1862, -3.5959 is called "border". The border property can be set on classes, ids or directly on the HTML element.

This example shows the color as border, it can be applied via the CSS property "border" or "border-color".

```
.border, #border, table{ border:4px solid rgb(255, 191, 226) }
```


If only the border color should be changed use the property `border-color`.

```
.border{ border-color:rgb(255, 191, 226) }
```

If you want to add a box shadow in that color use:

Here you see how a box with a 4 pixel `rgb(255, 191, 226)` colored shadow looks like.

```
.boxshadow{ -moz-box-shadow:4px 4px 4px  
4px rgb(255, 191, 226); -webkit-box-  
shadow:4px 4px 4px 4px rgb(255, 191, 226);  
box-shadow:4px 4px 4px 4px rgb(255, 191,  
226) }
```

Background

The CSS property to change the background color of an element to HunterLab 80.0079, 24.1862, -3.5959 is called "background". The background property can be set on classes, ids or directly on the HTML element.

```
.background, #background, body{  
background: rgb(255, 191, 226) }
```

If only the background color should be changed can be used:

```
.background{ background-color: rgb(255,  
191, 226) }
```

This example shows the color as background, it is applied via the CSS property "background".

To optimize and compress your CSS code, you can use our [online CSS compressor and optimizer](#) based on csstidy. If you want to create a linear or radial gradient as background or border, check our [CSS Gradient Generator](#).

Hey! You found this booklet interesting? Support Converting Colors with the new Membership Option!

The pro membership hides all ads, plus gives you double the colors in the color bucket, and more awesome pro features!

[Learn more, Memberships starting at \\$2.50/m!](#)

**Follow me
on Twitter!**

@ConvertingColor