

# Converting Colors

HunterLab(80.0873, 3.5257,  
4.4804)

Have a look what the booklet for  
HunterLab(80.0873, 3.5257, 4.4804)  
contains.

<b>HunterLab(80.2018, 3.2348, 4.4019)</b> .....	3
<b><i>Conversions</i></b> .....	4
<b><i>Details</i></b> .....	6
<b><i>Harmonies</i></b> .....	12
<b><i>Previews</i></b> .....	24
<b><i>Color Blindness Simulation</i></b> .....	28
<b><i>CSS Examples</i></b> .....	31

# Color

**HunterLab(80.2018, 3.2348,  
4.4019)**

# Conversions

## Conversions Part 1

<b>Format</b>	<b>Color</b>
Hex	E1CDD2
RGB	225, 205, 210
RGB Percent	88%, 80%, 82%
CMY	0.1176, 0.1961, 0.1765
CMYK	0.00, 0.09, 0.07, 0.12
HSL	345°, 25%, 84%
HSV	345°, 9%, 88%
XYZ	64.5155, 64.3233, 69.9880
YIQ	211.5500, 10.3150, 5.7950

# Conversions

## Conversions Part 2

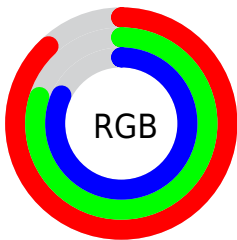
Format	Color
R <sub>Y</sub> B	225, 205, 210
Decimal	14798290
CIE Lab	84.14, 7.81, 0.04
CIE LCh	84, 7.805, 0.306
Yxy	64.3261, 0.3245, 0.3235
Android (android.graphics.Color)	4292988370 (0xFFE1CDD2)
YUV	211.5500, -0.7641, 11.7957
Hunter-Lab	80.2018, 3.2348, 4.4019

# Details

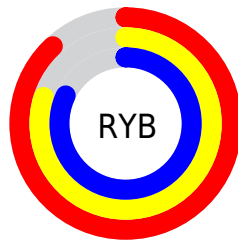
The HunterLab color  $80.2018, 3.2348, 4.4019$  is a light color, and the websafe version is hex  $CCCCCC$ . A complement of this color would be  $84.8519, -11.7048, 4.7658$ , and the grayscale version is  $80.9480, -4.3192, 4.3981$ .

A 20% lighter version of the original color is  $100.0000, -5.3358, 5.4332$ , and  $57.5148, 3.7676, 3.0831$  is the 20% darker color. If you saturate the color by 10%, you get  $73.1619, 12.3100, 4.3531$ , and if you desaturate by 10%, it is  $87.6140, -5.6013, 4.7690$ .

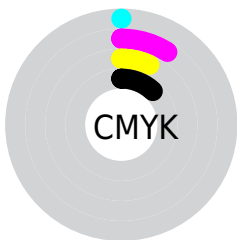
# Distribution



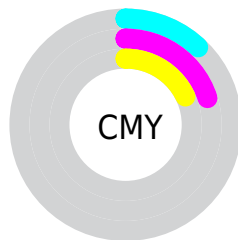
- Red (88%)
- Green (80%)
- Blue (82%)



- Red (88%)
- Yellow (80%)
- Blue (82%)



- Cyan (0%)
- Magenta (9%)
- Yellow (7%)
- Black (12%)



- Cyan (12%)
- Magenta (20%)
- Yellow (18%)

# Brightness & Saturation Gradients

These gradients show how the HunterLab color 80.2018, 3.2348, 4.4019 changes by changing the brightness by 10 percent. The first figure shows a shift by +10% for each color and the second figure -10%.

Similar to the brightness gradients but the following saturation gradients show a change of the HunterLab color 80.2018, 3.2348, 4.4019 by changing the saturation by 10% instead.



80.2018, 3.2348,  
4.4019

80.2018, 3.2348,  
4.4019

209.8491, -0.9388,  
11.4744

68.4944, 3.4871,  
3.7640

105.3947, 2.5790,  
5.7780

57.4181, 3.6874,  
3.1590

118.8244, 2.1867,  
6.5107

47.0130, 3.8280,  
2.5905

132.7805, 1.7543,  
7.2720

37.3256, 3.9011,  
2.0608

147.2438, 1.2841,  
8.0609

28.4137, 3.8968,  
1.5732

162.1973, 0.7781,  
8.8763

20.3518, 3.8006,  
1.1316

177.6252, 0.2380,

13.2411, 3.5907,

9.7176

0.7413

193.5134, -0.3348,  
10.5838

6.7661, 4.6653,  
0.3939

0.0000, NaN, NaN

80.2018, 3.2348,  
4.4019

80.2018, 3.2348,  
4.4019

73.1619, 12.3100,  
4.3531

87.6140, -5.6013,  
4.7690

66.5548, 21.6095,  
4.6850

95.3411, -14.2019,  
5.3951

60.4640, 31.0483,  
5.4734

97.3384, -14.7223,  
2.0951

54.9891, 40.4370,  
6.7915

■ 50.2455, 49.4247,  
8.6900

■ 46.3540, 57.4629,  
11.1604

■ 43.4183, 63.8547,  
14.0914

■ 41.4859, 67.9613,  
17.2463

■ 40.4581, 69.6978,  
20.2651

# Harmonies

## Analogous

The Analogous color harmony consists of three colors that are next to each other on the color wheel.



80.2036, 2.2303, 0.8085



80.2018, 3.2348, 4.4019



80.2036, 2.1896, 7.8292

# Triad

The Triadic color harmony groups three colors that are evenly spaced from another and form a triangle on the color wheel.



80.2036, 3.2326, 4.4032



80.2036, -7.9751, 10.1949



80.2036, -7.9079, -1.9774

# Complementary

The Complementary color scheme is a pair of colors which are on the opposite of each other on the color wheel.



80.2018, 3.2348, 4.4019



84.8519, -11.7048, 4.7658

# Split Complementary

Split-complementary colors differ from the complementary color scheme. The scheme consists of three colors, the original color and two neighbors of the complement color.



80.2036, -10.5581, 0.7405



80.2018, 3.2348, 4.4019



80.2036, -10.5964, 7.7670

# Square

The Square scheme is like the rectangle color scheme, but the four colors are evenly spaced on the color wheel.



80.2036, 3.2326, 4.4032



80.2036, -4.3232, 11.0754



80.2036, -11.5331, 4.3281



80.2036, -4.2443, -2.9789



# Rectangle

The Rectangle color scheme consists of four colors that form a rectangle on the color wheel.



80.2018, 3.2348, 4.4019



80.2036, 0.4858, 9.5835



80.2036, -11.5331, 4.3281



80.2036, -8.9444, -1.2281

# Sweetspot

The Sweet Spot groups the original color and five complimentary colors.



80.2036, 3.2326, 4.4032



97.3918, -2.2805, 5.2820



80.1982, 4.1908, -3.1725



44.7382, -0.6753, 2.4273

0.0000, NaN, NaN



46.2646, -2.4686, 2.5136



# Same Dimension

The Same Dimension uses a secret algorithm to generate beautiful new colors.



80.2036, 3.2326, 4.4032



90.6140, 5.9919, 5.0282



81.5543, -0.1915, 8.2578



37.0897, 1.7340, 2.0411



30.6689, 53.1135, 15.2285



8.1620, 14.3060, 2.7285



# Inverse Universe

The Inverse Universe completely reimagines the original color for something new.



80.2036, 3.2326, 4.4032



90.6140, 5.9919, 5.0282



83.4288, -8.2932, 0.6390



37.0897, 1.7340, 2.0411



30.6689, 53.1135, 15.2285

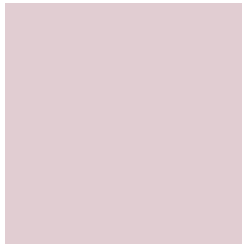


8.1620, 14.3060, 2.7285



# Previews

## White Background



This preview shows how the HunterLab color 80.2018, 3.2348, 4.4019 looks on a white background.

## Color Contrast Check

Large Text (above 18pt) WCAG AA × Fail

Any Text WCAG AA × Fail

Large Text (above 18pt) WCAG AAA × Fail

Any Text WCAG AAA × Fail



# Black Background



This preview shows how the HunterLab color 80.2018, 3.2348, 4.4019 looks on a black background.

## Color Contrast Check

Large Text (above 18pt) WCAG AA ✓ Pass

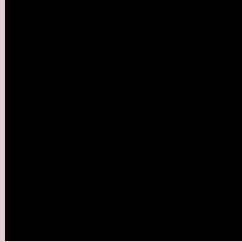
Any Text WCAG AA ✓ Pass

Large Text (above 18pt) WCAG AAA ✓ Pass

Any Text WCAG AAA ✓ Pass

If you want to check with other color combinations, try the [Color Contrast Checker](#).

## HunterLab 80.2018, 3.2348, 4.4019 Background



This preview shows how black text looks on a background with the HunterLab color 80.2018, 3.2348, 4.4019.



This preview shows how white text looks on a background with the HunterLab color 80.2018, 3.2348,



# Color Blindness Simulation

Color vision deficiency is a very complex topic, and I could not describe the different causes any better than Wikipedia does, so if you want to learn more, you should check out their [article about color blindness](#).

## Dichromacy



### Original Color

80.2018, 3.2348, 4.4019

### Protanopia

80.3122, -2.4695, 3.4615

### Deuteranopia

80.1174, 5.9988, 4.3508



## Tritanopia

80.2926, 5.6428, 0.0871

# Trichromacy



## Original Color

80.2018, 3.2348, 4.4019

## Protanomaly

80.3534, -0.8254, 4.0257

## Deuteranomaly

80.2078, 4.7830, 4.4360

## Tritanomaly

80.1950, 5.1199, 1.4747

# Monochromacy



## Original Color

80.2018, 3.2348, 4.4019

## Achromatopsia

81.1403, -4.3294, 4.4085

## Achromatomaly

80.6572, -1.3424, 4.3751

# CSS Examples

## Text

The CSS property to change the color of the text to HunterLab 80.2018, 3.2348, 4.4019 is called "color". The color property can be set on classes, ids or directly on the HTML element.

This example shows how text in the color `rgb(225, 205, 210)` looks like.

```
.text, #text, p{  
    color:rgb(225, 205, 210)  
}
```

If you want to add a text shadow in that color use the text-shadow property, you can generate a text shadow directly with our [CSS Text Shadow Generator](#).

Here you see how black text with a 4 pixel rgb(225, 205, 210) colored shadow looks like.

```
.shadow{ text-shadow: 4px 4px 2px rgb(225, 205, 210) }
```

## Border

The CSS property to change the border of an element to HunterLab 80.2018, 3.2348, 4.4019 is called "border".

The border property can be set on classes, ids or directly on the HTML element.

This example shows the color as border, it can be applied via the CSS property "border" or "border-color".

```
.border, #border, table{ border:4px solid rgb(225, 205, 210) }
```



If only the border color should be changed use the property `border-color`.

```
.border{ border-color:rgb(225, 205, 210) }
```

If you want to add a box shadow in that color use:

Here you see how a box with a 4 pixel `rgb(225, 205, 210)` colored shadow looks like.

```
.boxshadow{ -moz-box-shadow:4px 4px 4px  
4px rgb(225, 205, 210); -webkit-box-  
shadow:4px 4px 4px 4px rgb(225, 205, 210);  
box-shadow:4px 4px 4px 4px rgb(225, 205,  
210) }
```

# Background

The CSS property to change the background color of an element to HunterLab 80.2018, 3.2348, 4.4019 is called "background". The background property can be set on classes, ids or directly on the HTML element.

```
.background, #background, body{  
background: rgb(225, 205, 210) }
```

If only the background color should be changed can be used:

```
.background{ background-color: rgb(225,  
205, 210) }
```

This example shows the color as background, it is applied via the CSS property "background".

To optimize and compress your CSS code, you can use our [online CSS compressor and optimizer](#) based on csstidy. If you want to create a linear or radial gradient as background or border, check our [CSS Gradient Generator](#).

Hey! You found this booklet interesting? Support Converting Colors with the new Membership Option!

The pro membership hides all ads, plus gives you double the colors in the color bucket, and more awesome pro features!

**[Learn more, Memberships starting at \\$2.50/m!](#)**

**Follow me  
on Twitter!**

@ConvertingColor