

Converting Colors

HunterLab(80.1129, 2.1859,
8.3143)

Have a look what the booklet for
HunterLab(80.1129, 2.1859, 8.3143)
contains.

HunterLab(80.0303, 2.1086, 8.4133)	3
<i>Conversions</i>	4
<i>Details</i>	6
<i>Harmonies</i>	12
<i>Previews</i>	24
<i>Color Blindness Simulation</i>	28
<i>CSS Examples</i>	31

Color

**HunterLab(80.0303, 2.1086,
8.4133)**

Conversions

Conversions Part 1

Format	Color
Hex	E2CDC9
RGB	226, 205, 201
RGB Percent	89%, 80%, 79%
CMY	0.1137, 0.1961, 0.2118
CMYK	0.00, 0.09, 0.11, 0.11
HSL	10°, 30%, 84%
HSV	10°, 11%, 89%
XYZ	63.7380, 64.0485, 64.2617
YIQ	210.8230, 13.8000, 3.2080

Conversions

Conversions Part 2

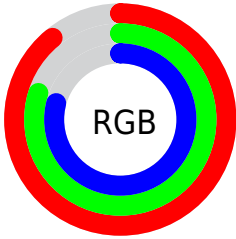
Format	Color
R _Y B	226, 206, 201
Decimal	14863817
CIE Lab	83.99, 6.65, 4.64
CIE LCh	84, 8.106, 34.897
Yxy	64.0513, 0.3319, 0.3335
Android (android.graphics.Color)	4293053897 (0xFFE2CDC9)
YUV	210.8230, -4.8427, 13.3102
Hunter-Lab	80.0303, 2.1086, 8.4133

Details

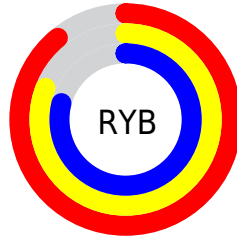
The HunterLab color **80.0303, 2.1086, 8.4133** is a light color, and the websafe version is hex **CCCCCC**. A complement of this color would be **83.7555, -10.3116, 0.4947**, and the grayscale version is **80.6511, -4.3033, 4.3819**.

A 20% lighter version of the original color is **100.0000, -5.3358, 5.4332**, and **57.3565, 2.7230, 6.8562** is the 20% darker color. If you saturate the color by 10%, you get **73.8429, 8.5722, 11.6632**, and if you desaturate by 10%, it is **86.5060, -4.0212, 5.0940**.

Distribution



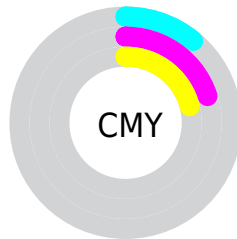
- Red (89%)
- Green (80%)
- Blue (79%)



- Red (89%)
- Yellow (81%)
- Blue (79%)



- Cyan (0%)
- Magenta (9%)
- Yellow (11%)
- Black (11%)



- Cyan (11%)
- Magenta (20%)
- Yellow (21%)

Brightness & Saturation Gradients

These gradients show how the HunterLab color 80.0303, 2.1086, 8.4133 changes by changing the brightness by 10 percent. The first figure shows a shift by +10% for each color and the second figure -10%.

Similar to the brightness gradients but the following saturation gradients show a change of the HunterLab color 80.0303, 2.1086, 8.4133 by changing the saturation by 10% instead.

80.0303, 2.1086,
8.4133

80.0303, 2.1086,
8.4133

209.6127, -2.4638,
17.0760

68.3317, 2.4141,
7.5578

105.2069, 1.3529,
10.1924

57.2647, 2.6706,
6.7222

118.6289, 0.9136,
11.1135

46.8695, 2.8704,
5.9072

132.5776, 0.4359,
12.0557

37.1927, 3.0068,
5.1114

147.0338, -0.0780,
13.0189

28.2924, 3.0703,
4.3323

161.9804, -0.6265,
14.0028

20.2433, 3.0478,
3.5653

177.4016, -1.2078,

13.1472, 2.9191,

15.0072

2.8004

193.2834, -1.8207,
16.0316

■ 6.6483, 4.0025,
3.2533

0.0000, NaN, NaN

■ 80.0303, 2.1086,
8.4133

■ 80.0303, 2.1086,
8.4133

■ 73.8429, 8.5722,
11.6632

■ 86.5060, -4.0212,
5.0940

■ 67.9825, 15.3999,
14.8061

■ 93.2289, -9.8442,
1.7228

■ 62.5043, 22.5896,
17.7919

■ 97.4212, -14.4264,
2.2002

■ 57.4721, 30.0965,
20.5448

■ 52.9600, 37.8006,
22.9592

■ 49.0493, 45.4720,
24.9010

■ 45.8203, 52.7471,
26.2250

■ 43.3372, 59.1472,
26.8213

■ 41.7643, 63.6850,
26.8499

Harmonies

Analogous

The Analogous color harmony consists of three colors that are next to each other on the color wheel.



80.0321, 3.5025, 4.9760



80.0303, 2.1086, 8.4133



80.0321, -0.9984, 10.6788

Triad

The Triadic color harmony groups three colors that are evenly spaced from another and form a triangle on the color wheel.



80.0321, 2.1063, 8.4146



80.0321, -11.0946, 7.3869



80.0321, -3.6196, -3.2503

Complementary

The Complementary color scheme is a pair of colors which are on the opposite of each other on the color wheel.



80.0303, 2.1086, 8.4133



83.7555, -10.3116, 0.4947

Split Complementary

Split-complementary colors differ from the complementary color scheme. The scheme consists of three colors, the original color and two neighbors of the complement color.



80.0321, -7.4989, -2.5281



80.0303, 2.1086, 8.4133



80.0321, -11.7656, 3.7317

Square

The Square scheme is like the rectangle color scheme, but the four colors are evenly spaced on the color wheel.



80.0321, 2.1063, 8.4146



80.0321, -8.6105, 10.1061



80.0321, -10.4617, 0.0738



80.0321, 0.1557, -1.8544

Rectangle

The Rectangle color scheme consists of four colors that form a rectangle on the color wheel.



80.0303, 2.1086, 8.4133



80.0321, -3.5920, 11.2806



80.0321, -10.4617, 0.0738



80.0321, -4.9549, -3.2478

Sweetspot

The Sweet Spot groups the original color and five complimentary colors.



80.0321, 2.1063, 8.4146



97.7170, -3.2638, 6.5920



79.5175, 7.8103, -2.5245



44.9281, -1.2512, 3.1926

0.0000, NaN, NaN



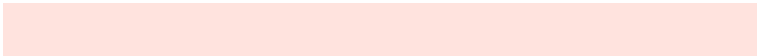
46.2646, -2.4686, 2.5136

Same Dimension

The Same Dimension uses a secret algorithm to generate beautiful new colors.



80.0321, 2.1063, 8.4146



90.3057, 3.8845, 10.4109



83.7504, -4.2226, 12.4126



37.4877, 0.5044, 3.6443



31.7228, 47.5285, 20.3795



8.9879, 10.5754, 5.7234

Inverse Universe

The Inverse Universe completely reimagines the original color for something new.



83.7555, -10.3116, 0.4947



95.3442, -12.9269, -0.3077



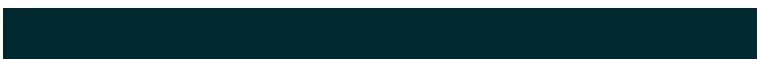
79.9245, -4.0783, -4.1982



38.9601, -4.4047, 0.5127



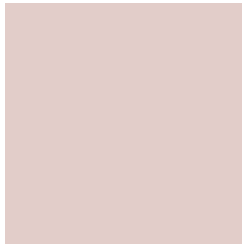
49.2345, -19.5040, -19.4353



13.3479, -5.6384, -4.5120

Previews

White Background



This preview shows how the HunterLab color 80.0303, 2.1086, 8.4133 looks on a white background.

Color Contrast Check

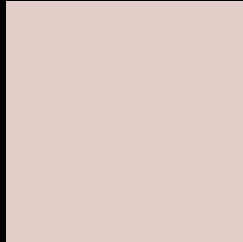
Large Text (above 18pt) WCAG AA × Fail

Any Text WCAG AA × Fail

Large Text (above 18pt) WCAG AAA × Fail

Any Text WCAG AAA × Fail

Black Background



This preview shows how the HunterLab color 80.0303, 2.1086, 8.4133 looks on a black background.

Color Contrast Check

Large Text (above 18pt) WCAG AA ✓ Pass

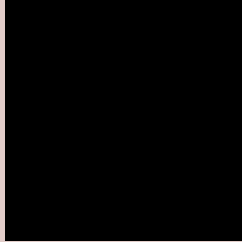
Any Text WCAG AA ✓ Pass

Large Text (above 18pt) WCAG AAA ✓ Pass

Any Text WCAG AAA ✓ Pass

If you want to check with other color combinations, try the [Color Contrast Checker](#).

HunterLab 80.0303, 2.1086, 8.4133 Background



This preview shows how black text looks on a background with the HunterLab color 80.0303, 2.1086, 8.4133.



This preview shows how white text looks on a background with the HunterLab color 80.0303, 2.1086,

8.4133.

Color Blindness Simulation

Color vision deficiency is a very complex topic, and I could not describe the different causes any better than Wikipedia does, so if you want to learn more, you should check out their [article about color blindness](#).

Dichromacy



Original Color

80.0303, 2.1086, 8.4133

Protanopia

80.2246, -3.3232, 7.6195

Deuteranopia

80.1577, 5.5897, 8.6179



Tritanopia

79.8730, 7.2056, 0.1068

Trichromacy



Original Color

80.0303, 2.1086, 8.4133

Protanomaly

80.2721, -1.6515, 8.1628

Deuteranomaly

80.1410, 4.0140, 8.5715

Tritanomaly

79.8725, 5.3028, 3.0735

Monochromacy



Original Color

80.0303, 2.1086, 8.4133

Achromatopsia

80.7097, -4.3065, 4.3851

Achromatomaly

80.4393, -2.3395, 6.0146

CSS Examples

Text

The CSS property to change the color of the text to HunterLab 80.0303, 2.1086, 8.4133 is called "color". The color property can be set on classes, ids or directly on the HTML element.

This example shows how text in the color `rgb(226, 205, 201)` looks like.

```
.text, #text, p{  
    color:rgb(226, 205, 201)  
}
```

If you want to add a text shadow in that color use the text-shadow property, you can generate a text shadow directly with our [CSS Text Shadow Generator](#).

Here you see how black text with a 4 pixel rgb(226, 205, 201) colored shadow looks like.

```
.shadow{ text-shadow: 4px 4px 2px rgb(226, 205, 201) }
```

Border

The CSS property to change the border of an element to HunterLab 80.0303, 2.1086, 8.4133 is called "border". The border property can be set on classes, ids or directly on the HTML element.

This example shows the color as border, it can be applied via the CSS property "border" or "border-color".

```
.border, #border, table{ border:4px solid rgb(226, 205, 201) }
```


If only the border color should be changed use the property `border-color`.

```
.border{ border-color:rgb(226, 205, 201) }
```

If you want to add a box shadow in that color use:

Here you see how a box with a 4 pixel `rgb(226, 205, 201)` colored shadow looks like.

```
.boxshadow{ -moz-box-shadow:4px 4px 4px 4px rgb(226, 205, 201); -webkit-box-shadow:4px 4px 4px 4px rgb(226, 205, 201); box-shadow:4px 4px 4px 4px rgb(226, 205, 201) }
```

Background

The CSS property to change the background color of an element to HunterLab 80.0303, 2.1086, 8.4133 is called "background". The background property can be set on classes, ids or directly on the HTML element.

```
.background, #background, body{  
background: rgb(226, 205, 201) }
```

If only the background color should be changed can be used:

```
.background{ background-color: rgb(226,  
205, 201) }
```

This example shows the color as background, it is applied via the CSS property "background".

To optimize and compress your CSS code, you can use our [online CSS compressor and optimizer](#) based on csstidy. If you want to create a linear or radial gradient as background or border, check our [CSS Gradient Generator](#).

Hey! You found this booklet interesting? Support Converting Colors with the new Membership Option!

The pro membership hides all ads, plus gives you double the colors in the color bucket, and more awesome pro features!

[Learn more, Memberships starting at \\$2.50/m!](#)

**Follow me
on Twitter!**

@ConvertingColor