

Converting Colors

HunterLab(80.1174, 3.6794,
7.0625)

Have a look what the booklet for
HunterLab(80.1174, 3.6794, 7.0625)
contains.

HunterLab(80.0246, 3.7991, 7.0522)	3
<i>Conversions</i>	4
<i>Details</i>	6
<i>Harmonies</i>	12
<i>Previews</i>	24
<i>Color Blindness Simulation</i>	28
<i>CSS Examples</i>	31

Color

**HunterLab(80.0246, 3.7991,
7.0522)**

Conversions

Conversions Part 1

Format	Color
Hex	E4CCCC
RGB	228, 204, 204
RGB Percent	89%, 80%, 80%
CMY	0.1059, 0.2000, 0.2000
CMYK	0.00, 0.11, 0.11, 0.11
HSL	0°, 31%, 85%
HSV	0°, 11%, 89%
XYZ	64.4869, 64.0394, 66.0888
YIQ	211.1760, 14.3040, 5.0880

Conversions

Conversions Part 2

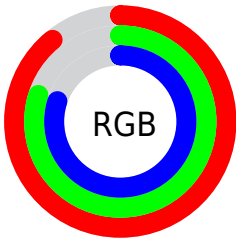
Format	Color
R _Y B	228, 204, 204
Decimal	14994636
CIE Lab	83.99, 8.38, 3.05
CIE LCh	84, 8.916, 20.033
Yxy	64.0422, 0.3314, 0.3291
Android (android.graphics.Color)	4293184716 (0xFFE4CCCC)
YUV	211.1760, -3.5378, 14.7546
Hunter-Lab	80.0246, 3.7991, 7.0522

Details

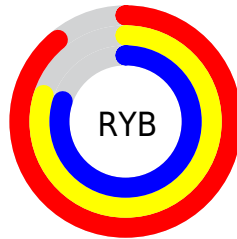
The HunterLab color $80.0246, 3.7991, 7.0522$ is a light color, and the websafe version is hex `CCCCCC`. A complement of this color would be $85.9792, -12.0957, 2.1530$, and the grayscale version is $80.7974, -4.3111, 4.3899$.

A 20% lighter version of the original color is $100.0000, -5.3358, 5.4332$, and $57.2585, 3.9969, 5.4745$ is the 20% darker color. If you saturate the color by 10%, you get $72.7815, 12.2383, 9.3611$, and if you desaturate by 10%, it is $87.6693, -4.2841, 4.8953$.

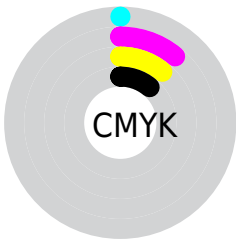
Distribution



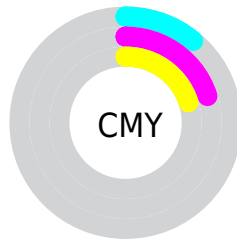
- Red (89%)
- Green (80%)
- Blue (80%)



- Red (89%)
- Yellow (80%)
- Blue (80%)



- Cyan (0%)
- Magenta (11%)
- Yellow (11%)
- Black (11%)



- Cyan (11%)
- Magenta (20%)
- Yellow (20%)

Brightness & Saturation Gradients

These gradients show how the HunterLab color 80.0246, 3.7991, 7.0522 changes by changing the brightness by 10 percent. The first figure shows a shift by +10% for each color and the second figure -10%.

Similar to the brightness gradients but the following saturation gradients show a change of the HunterLab color 80.0246, 3.7991, 7.0522 by changing the saturation by 10% instead.

80.0246, 3.7991,
7.0522

80.0246, 3.7991,
7.0522

209.6049, -0.1711,
15.1591

68.3263, 4.0239,
6.2731

105.2006, 3.1942,
8.6901

57.2596, 4.1955,
5.5187

118.6224, 2.8259,
9.5452

46.8647, 4.3055,
4.7906

132.5708, 2.4167,
10.4242

37.1883, 4.3462,
4.0889

147.0268, 1.9689,
11.3265

28.2884, 4.3068,
3.4133

161.9732, 1.4845,
12.2516

20.2397, 4.1724,
2.7624

177.3942, 0.9654,

13.1440, 3.9203,

13.1991

2.1321

193.2758, 0.4131,
14.1684

■ 6.6443, 5.1384,
2.2671

0.0000, NaN, NaN

■ 80.0246, 3.7991,
7.0522

■ 80.0246, 3.7991,
7.0522

■ 72.7815, 12.2383,
9.3611

■ 87.6693, -4.2841,
4.8953

■ 66.0086, 21.0433,
11.8244

■ 95.6520, -12.0367,
2.8715

■ 59.8004, 30.1521,
14.4299

■ 97.5880, -13.8310,
2.4118

■ 54.2697, 39.3879,
17.1264

■ 49.5466, 48.3896,
19.8022

■ 45.7637, 56.5667,
22.2690

■ 43.0263, 63.1610,
24.2801

■ 41.3648, 67.4959,
25.6112

■ 40.6140, 69.5476,
26.2437

Harmonies

Analogous

The Analogous color harmony consists of three colors that are next to each other on the color wheel.



80.0264, 4.1949, 2.9563



80.0246, 3.7991, 7.0522



80.0264, 1.2104, 10.2590

Triad

The Triadic color harmony groups three colors that are evenly spaced from another and form a triangle on the color wheel.



80.0264, 3.7968, 7.0535



80.0264, -10.6303, 9.3356



80.0264, -5.7274, -3.9474

Complementary

The Complementary color scheme is a pair of colors which are on the opposite of each other on the color wheel.



80.0246, 3.7991, 7.0522



85.9792, -12.0957, 2.1530

Split Complementary

Split-complementary colors differ from the complementary color scheme. The scheme consists of three colors, the original color and two neighbors of the complement color.



80.0264, -9.6151, -2.0339



80.0246, 3.7991, 7.0522



80.0264, -12.4053, 5.7310

Square

The Square scheme is like the rectangle color scheme, but the four colors are evenly spaced on the color wheel.



80.0264, 3.7968, 7.0535



80.0264, -7.1404, 11.5266



80.0264, -12.0377, 1.5613



80.0264, -1.3673, -3.5463

Rectangle

The Rectangle color scheme consists of four colors that form a rectangle on the color wheel.



80.0246, 3.7991, 7.0522



80.0264, -1.3766, 11.5295



80.0264, -12.0377, 1.5613



80.0264, -7.1313, -3.5498

Sweetspot

The Sweet Spot groups the original color and five complimentary colors.



80.0264, 3.7968, 7.0535



97.3312, -2.6138, 6.1534



80.7974, 7.9314, -3.9356



44.7027, -0.8700, 2.9370

0.0000, NaN, NaN



46.2646, -2.4686, 2.5136

Same Dimension

The Same Dimension uses a secret algorithm to generate beautiful new colors.



80.0264, 3.7968, 7.0535



88.7083, 6.7186, 8.6605



83.6458, -2.4406, 11.0061



37.9057, 1.3684, 3.1968



30.8624, 52.8475, 19.9424



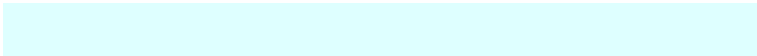
8.3904, 14.3633, 5.4216

Inverse Universe

The Inverse Universe completely reimagines the original color for something new.



85.9792, -12.0957, 2.1530



97.0786, -15.6439, 1.7645



82.1897, -6.0045, -2.4092



40.4178, -5.3367, 1.1293



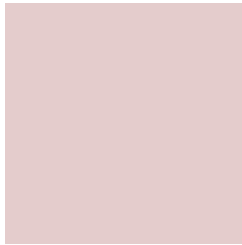
59.3826, -31.4754, -6.2768



16.1429, -8.5567, -1.7057

Previews

White Background



This preview shows how the HunterLab color 80.0246, 3.7991, 7.0522 looks on a white background.

Color Contrast Check

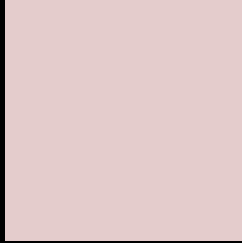
Large Text (above 18pt) WCAG AA × Fail

Any Text WCAG AA × Fail

Large Text (above 18pt) WCAG AAA × Fail

Any Text WCAG AAA × Fail

Black Background



This preview shows how the HunterLab color 80.0246, 3.7991, 7.0522 looks on a black background.

Color Contrast Check

Large Text (above 18pt) WCAG AA ✓ Pass

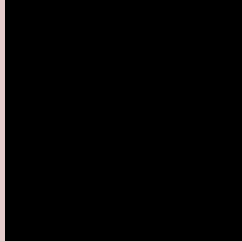
Any Text WCAG AA ✓ Pass

Large Text (above 18pt) WCAG AAA ✓ Pass

Any Text WCAG AAA ✓ Pass

If you want to check with other color combinations, try the [Color Contrast Checker](#).

HunterLab 80.0246, 3.7991, 7.0522 Background



This preview shows how black text looks on a background with the HunterLab color 80.0246, 3.7991, 7.0522.



This preview shows how white text looks on a background with the HunterLab color 80.0246, 3.7991,

Color Blindness Simulation

Color vision deficiency is a very complex topic, and I could not describe the different causes any better than Wikipedia does, so if you want to learn more, you should check out their [article about color blindness](#).

Dichromacy



Original Color

80.0246, 3.7991, 7.0522

Protanopia

80.2509, -2.9911, 5.7849

Deuteranopia

80.1419, 5.7148, 7.2201



Tritanopia

80.0787, 7.8907, 0.3720

Trichromacy



Original Color

80.0246, 3.7991, 7.0522

Protanomaly

80.0887, -0.4846, 6.1135

Deuteranomaly

80.0378, 5.3651, 7.0947

Tritanomaly

80.1087, 6.1579, 2.8793

Monochromacy



Original Color

80.0246, 3.7991, 7.0522

Achromatopsia

80.7097, -4.3065, 4.3851

Achromatomaly

80.2605, -1.3302, 5.3502

CSS Examples

Text

The CSS property to change the color of the text to HunterLab 80.0246, 3.7991, 7.0522 is called "color". The color property can be set on classes, ids or directly on the HTML element.

This example shows how text in the color `rgb(228, 204, 204)` looks like.

```
.text, #text, p{  
    color:rgb(228, 204, 204)  
}
```

If you want to add a text shadow in that color use the text-shadow property, you can generate a text shadow directly with our [CSS Text Shadow Generator](#).

Here you see how black text with a 4 pixel rgb(228, 204, 204) colored shadow looks like.

```
.shadow{ text-shadow: 4px 4px 2px rgb(228, 204, 204) }
```

Border

The CSS property to change the border of an element to HunterLab 80.0246, 3.7991, 7.0522 is called "border".

The border property can be set on classes, ids or directly on the HTML element.

This example shows the color as border, it can be applied via the CSS property "border" or "border-color".

```
.border, #border, table{ border:4px solid rgb(228, 204, 204) }
```


If only the border color should be changed use the property border-color.

```
.border{ border-color:rgb(228, 204, 204) }
```

If you want to add a box shadow in that color use:

Here you see how a box with a 4 pixel rgb(228, 204, 204) colored shadow looks like.

```
.boxshadow{ -moz-box-shadow:4px 4px 4px  
4px rgb(228, 204, 204); -webkit-box-  
shadow:4px 4px 4px 4px rgb(228, 204, 204);  
box-shadow:4px 4px 4px 4px rgb(228, 204,  
204) }
```

Background

The CSS property to change the background color of an element to HunterLab 80.0246, 3.7991, 7.0522 is called "background". The background property can be set on classes, ids or directly on the HTML element.

```
.background, #background, body{  
background: rgb(228, 204, 204) }
```

If only the background color should be changed can be used:

```
.background{ background-color: rgb(228,  
204, 204) }
```

This example shows the color as background, it is applied via the CSS property "background".

To optimize and compress your CSS code, you can use our [online CSS compressor and optimizer](#) based on csstidy. If you want to create a linear or radial gradient as background or border, check our [CSS Gradient Generator](#).

Hey! You found this booklet interesting? Support Converting Colors with the new Membership Option!

The pro membership hides all ads, plus gives you double the colors in the color bucket, and more awesome pro features!

[Learn more, Memberships starting at \\$2.50/m!](#)

**Follow me
on Twitter!**

@ConvertingColor