

# Converting Colors

HunterLab(80.1194, -1.5583,  
11.1619)

Have a look what the booklet for  
HunterLab(80.1194, -1.5583,  
11.1619) contains.

<b>HunterLab(80.0596, -1.2291, 11.0752)</b> .....	3
<b><i>Conversions</i></b> .....	4
<b><i>Details</i></b> .....	6
<b><i>Harmonies</i></b> .....	12
<b><i>Previews</i></b> .....	24
<b><i>Color Blindness Simulation</i></b> .....	28
<b><i>CSS Examples</i></b> .....	31

# Color

**HunterLab(80.0596, -1.2291,  
11.0752)**

# Conversions

## Conversions Part 1

Format	Color
Hex	DECFC3
RGB	222, 207, 195
RGB Percent	87%, 81%, 76%
CMY	0.1294, 0.1882, 0.2353
CMYK	0.00, 0.07, 0.12, 0.13
HSL	27°, 29%, 82%
HSV	27°, 12%, 87%
XYZ	62.2874, 64.0954, 60.7185
YIQ	210.1170, 12.7920, -0.5520

# Conversions

## Conversions Part 2

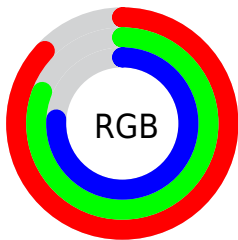
Format	Color
R <sub>Y</sub> B	222, 217, 195
Decimal	14602179
CIE Lab	84.02, 3.20, 7.82
CIE LCh	84, 8.450, 67.764
Yxy	64.0982, 0.3329, 0.3426
Android (android.graphics.Color)	4292792259 (0xFFDECF3)
YUV	210.1170, -7.4527, 10.4214
Hunter-Lab	80.0596, -1.2291, 11.0752

# Details

The HunterLab color  $80.0596, -1.2291, 11.0752$  is a light color, and the websafe version is hex `CCCCCC`. A complement of this color would be  $79.3524, -6.7404, -2.8570$ , and the grayscale version is  $80.3585, -4.2877, 4.3660$ .

A 20% lighter version of the original color is  $99.9041, -5.8614, 6.8020$ , and  $57.3769, -0.4363, 9.3082$  is the 20% darker color. If you saturate the color by 10%, you get  $75.7787, 1.8665, 15.8732$ , and if you desaturate by 10%, it is  $84.4915, -4.0018, 5.8313$ .

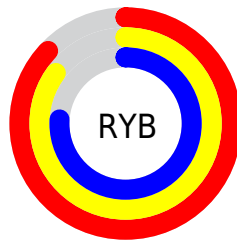
# Distribution



Red (87%)

Green (81%)

Blue (76%)



Red (87%)

Yellow (85%)

Blue (76%)

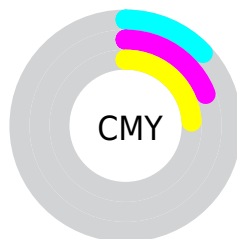


Cyan (0%)

Magenta (7%)

Yellow (12%)

Black (13%)



Cyan (13%)

Magenta (19%)

Yellow (24%)

# Brightness & Saturation Gradients

These gradients show how the HunterLab color 80.0596, -1.2291, 11.0752 changes by changing the brightness by 10 percent. The first figure shows a shift by +10% for each color and the second figure -10%.

Similar to the brightness gradients but the following saturation gradients show a change of the HunterLab color 80.0596, -1.2291, 11.0752 by changing the saturation by 10% instead.



■ 80.0596, -1.2291,  
11.0752

■ 80.0596, -1.2291,  
11.0752

209.6531, -7.0157,  
20.8758

■ 68.3595, -0.7602,  
10.0622

105.2390, -2.2897,  
13.1447

■ 57.2909, -0.3315,  
9.0589

118.6623, -2.8722,  
14.2009

■ 46.8940, 0.0510,  
8.0637

132.6122, -3.4880,  
15.2727

■ 37.2154, 0.3826,  
7.0721

147.0697, -4.1353,  
16.3605

■ 28.3131, 0.6569,  
6.0770

162.0174, -4.8129,  
17.4646

■ 20.2618, 0.8652,  
5.0661

177.4398, -5.5195,

■ 13.1632, 0.9939,

18.5851

4.0163

193.3227, -6.2541,  
19.7222

■ 6.6685, 1.7332,  
4.6680

0.0000, NaN, NaN

■ 80.0596, -1.2291,  
11.0752

■ 80.0596, -1.2291,  
11.0752

■ 75.7787, 1.8665,  
15.8732

■ 84.4915, -4.0018,  
5.8313

■ 71.6581, 5.3180,  
20.1639

■ 89.0564, -6.4720,  
0.1888

■ 67.7157, 9.1465,  
23.8837

■ 93.5137, -9.9446,  
-2.5350

■ 63.9697, 13.3687,  
26.9628

■ 97.0926, -15.6026,  
1.7822

■ 60.4397, 17.9898,  
29.3294

■ 57.1468, 22.9968,  
30.9175

■ 54.1121, 28.3495,  
31.6792

■ 51.3556, 33.9694,  
31.6084

■ 49.3933, 38.4494,  
31.1091

# Harmonies

## Analogous

The Analogous color harmony consists of three colors that are next to each other on the color wheel.



80.0614, 2.1360, 8.8726



80.0596, -1.2291, 11.0752



80.0614, -5.3523, 11.5263

# Triad

The Triadic color harmony groups three colors that are evenly spaced from another and form a triangle on the color wheel.



80.0614, -1.2313, 11.0764



80.0614, -12.0370, 3.3247



80.0614, 0.6740, -1.8839

# Complementary

The Complementary color scheme is a pair of colors which are on the opposite of each other on the color wheel.



80.0596, -1.2291, 11.0752



79.3524, -6.7404, -2.8570

# Split Complementary

Split-complementary colors differ from the complementary color scheme. The scheme consists of three colors, the original color and two neighbors of the complement color.



80.0614, -3.1943, -3.5414



80.0596, -1.2291, 11.0752



80.0614, -10.4927, -0.4359

# Square

The Square scheme is like the rectangle color scheme, but the four colors are evenly spaced on the color wheel.



80.0614, -1.2313, 11.0764



80.0614, -11.5357, 7.1800



80.0614, -7.2761, -2.9984



80.0614, 3.2516, 1.4292



# Rectangle

The Rectangle color scheme consists of four colors that form a rectangle on the color wheel.



80.0596, -1.2291, 11.0752



80.0614, -7.9628, 10.7936



80.0614, -7.2761, -2.9984



80.0614, -0.5216, -2.6607

# Sweetspot

The Sweet Spot groups the original color and five complimentary colors.



80.0614, -1.2313, 11.0764



97.8769, -4.1040, 8.0070



76.9603, 7.5215, 0.4293



45.0990, -1.7886, 3.9244

0.0000, NaN, NaN



46.2646, -2.4686, 2.5136

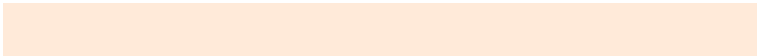


# Same Dimension

The Same Dimension uses a secret algorithm to generate beautiful new colors.



80.0614, -1.2313, 11.0764



92.1757, -0.4111, 14.6755



84.1201, -7.9647, 15.3043



38.3388, -0.9502, 4.5754



38.3477, 28.9373, 24.1363



10.9353, 5.6498, 6.8372

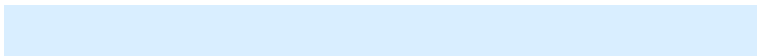


# Inverse Universe

The Inverse Universe completely reimagines the original color for something new.



79.3524, -6.7404, -2.8570



91.1477, -8.3940, -5.5229



75.3118, 0.0134, -7.9988



38.0781, -2.9766, -0.5481



34.3746, 3.0577, -49.5660

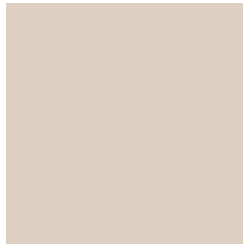


9.9842, -0.7974, -10.7579



# Previews

## White Background



This preview shows how the HunterLab color 80.0596, -1.2291, 11.0752 looks on a white background.

## Color Contrast Check

Large Text (above 18pt) WCAG AA × Fail

Any Text WCAG AA × Fail

Large Text (above 18pt) WCAG AAA × Fail

Any Text WCAG AAA × Fail



# Black Background



This preview shows how the HunterLab color 80.0596, -1.2291, 11.0752 looks on a black background.

## Color Contrast Check

Large Text (above 18pt) WCAG AA ✓ Pass

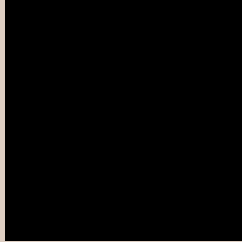
Any Text WCAG AA ✓ Pass

Large Text (above 18pt) WCAG AAA ✓ Pass

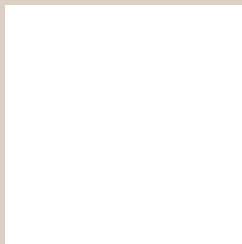
Any Text WCAG AAA ✓ Pass

If you want to check with other color combinations, try the [Color Contrast Checker](#).

## HunterLab 80.0596, -1.2291, 11.0752 Background



This preview shows how black text looks on a background with the HunterLab color 80.0596, -1.2291, 11.0752.



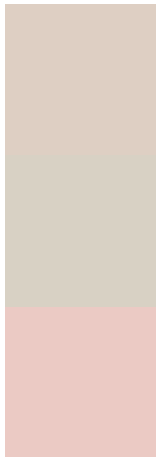
This preview shows how white text looks on a background with the HunterLab color 80.0596, -1.2291, 11.0752.



# Color Blindness Simulation

Color vision deficiency is a very complex topic, and I could not describe the different causes any better than Wikipedia does, so if you want to learn more, you should check out their [article about color blindness](#).

## Dichromacy



### Original Color

80.0596, -1.2291, 11.0752

### Protanopia

80.1158, -4.1077, 10.6461

### Deuteranopia

79.9304, 6.0503, 10.6201



## Tritanopia

79.8961, 5.8338, -0.3994

# Trichromacy



## Original Color

80.0596, -1.2291, 11.0752

## Protanomaly

80.0017, -2.9332, 10.5412

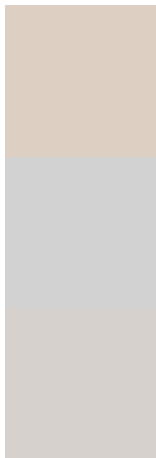
## Deuteranomaly

79.9964, 3.2362, 10.6434

## Tritanomaly

79.8036, 3.4195, 3.9348

# Monochromacy



## Original Color

80.0596, -1.2291, 11.0752

## Achromatopsia

80.2795, -4.2835, 4.3617

## Achromatomaly

80.1903, -3.3222, 6.6507

# CSS Examples

## Text

The CSS property to change the color of the text to HunterLab 80.0596, -1.2291, 11.0752 is called "color". The color property can be set on classes, ids or directly on the HTML element.

This example shows how text in the color `rgb(222, 207, 195)` looks like.

```
.text, #text, p{  
    color:rgb(222, 207, 195)  
}
```

If you want to add a text shadow in that color use the text-shadow property, you can generate a text shadow directly with our [CSS Text Shadow Generator](#).

Here you see how black text with a 4 pixel rgb(222, 207, 195) colored shadow looks like.

```
.shadow{ text-shadow: 4px 4px 2px rgb(222, 207, 195) }
```

## Border

The CSS property to change the border of an element to HunterLab 80.0596, -1.2291, 11.0752 is called "border". The border property can be set on classes, ids or directly on the HTML element.

This example shows the color as border, it can be applied via the CSS property "border" or "border-color".

```
.border, #border, table{ border:4px solid rgb(222, 207, 195) }
```



If only the border color should be changed use the property `border-color`.

```
.border{ border-color:rgb(222, 207, 195) }
```

If you want to add a box shadow in that color use:

Here you see how a box with a 4 pixel `rgb(222, 207, 195)` colored shadow looks like.

```
.boxshadow{ -moz-box-shadow:4px 4px 4px 4px rgb(222, 207, 195); -webkit-box-shadow:4px 4px 4px 4px rgb(222, 207, 195); box-shadow:4px 4px 4px 4px rgb(222, 207, 195) }
```

# Background

The CSS property to change the background color of an element to HunterLab 80.0596, -1.2291, 11.0752 is called "background". The background property can be set on classes, ids or directly on the HTML element.

```
.background, #background, body{  
background: rgb(222, 207, 195) }
```

If only the background color should be changed can be used:

```
.background{ background-color: rgb(222,  
207, 195) }
```

This example shows the color as background, it is applied via the CSS property "background".

To optimize and compress your CSS code, you can use our [online CSS compressor and optimizer](#) based on csstidy. If you want to create a linear or radial gradient as background or border, check our [CSS Gradient Generator](#).

Hey! You found this booklet interesting? Support Converting Colors with the new Membership Option!

The pro membership hides all ads, plus gives you double the colors in the color bucket, and more awesome pro features!

**[Learn more, Memberships starting at \\$2.50/m!](#)**

**Follow me  
on Twitter!**

@ConvertingColor