

Converting Colors

HunterLab(80.2297, -0.7008,
11.7069)

Have a look what the booklet for
HunterLab(80.2297, -0.7008,
11.7069) contains.

HunterLab(80.2297, -0.7008, 11.7069)	3
<i>Conversions</i>	4
<i>Details</i>	6
<i>Harmonies</i>	12
<i>Previews</i>	24
<i>Color Blindness Simulation</i>	28
<i>CSS Examples</i>	31

Color

**HunterLab(80.2297, -0.7008,
11.7069)**

Conversions

Conversions Part 1

Format	Color
Hex	E0CFC2
RGB	224, 207, 194
RGB Percent	88%, 81%, 76%
CMY	0.1216, 0.1882, 0.2392
CMYK	0.00, 0.08, 0.13, 0.12
HSL	26°, 33%, 82%
HSV	26°, 13%, 88%
XYZ	62.7909, 64.3680, 60.1539
YIQ	210.6010, 14.3050, -0.4390

Conversions

Conversions Part 2

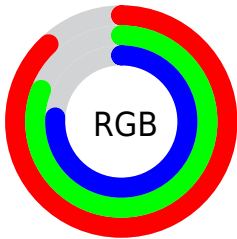
Format	Color
R _Y B	224, 217, 194
Decimal	14733250
CIE Lab	84.16, 3.75, 8.58
CIE LCh	84, 9.363, 66.361
Yxy	64.3709, 0.3352, 0.3436
Android (android.graphics.Color)	4292923330 (0xFFE0CFC2)
YUV	210.6010, -8.1843, 11.7509
Hunter-Lab	80.2297, -0.7008, 11.7069

Details

The HunterLab color **80.2297, -0.7008, 11.7069** is a light color, and the websafe version is hex **CCCCCC**. A complement of this color would be **79.6482, -7.1666, -3.5427**, and the grayscale version is **80.5693, -4.2990, 4.3775**.

A 20% lighter version of the original color is **99.8409, -6.2079, 7.7041**, and **57.5421, 0.0786, 9.8939** is the 20% darker color. If you saturate the color by 10%, you get **75.8517, 2.5987, 16.4337**, and if you desaturate by 10%, it is **84.7661, -3.6709, 6.5370**.

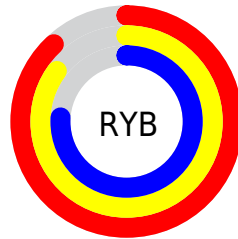
Distribution



Red (88%)

Green (81%)

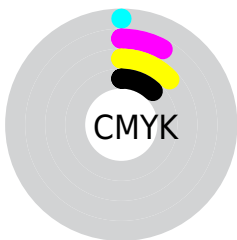
Blue (76%)



Red (88%)

Yellow (85%)

Blue (76%)

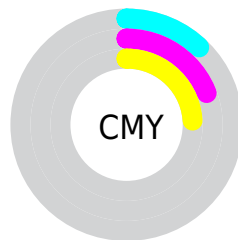


Cyan (0%)

Magenta (8%)

Yellow (13%)

Black (12%)



Cyan (12%)

Magenta (19%)

Yellow (24%)

Brightness & Saturation Gradients

These gradients show how the HunterLab color 80.2297, -0.7008, 11.7069 changes by changing the brightness by 10 percent. The first figure shows a shift by +10% for each color and the second figure -10%.

Similar to the brightness gradients but the following saturation gradients show a change of the HunterLab color 80.2297, -0.7008, 11.7069 by changing the saturation by 10% instead.

■ 80.2297, -0.7008,
11.7069

■ 80.2297, -0.7008,
11.7069

209.8875, -6.2947,
21.7834

■ 68.5209, -0.2579,
10.6556

■ 105.4253, -1.7130,
13.8468

■ 57.4430, 0.1435,
9.6116

118.8562, -2.2729,
14.9358

■ 47.0363, 0.4969,
8.5726

132.8135, -2.8667,
16.0390

■ 37.3472, 0.7975,
7.5333

147.2780, -3.4929,
17.1571

■ 28.4335, 1.0383,
6.4856

162.2326, -4.1499,
18.2903

■ 20.3695, 1.2098,
5.4154

177.6616, -4.8367,

■ 13.2565, 1.2974,

19.4390

4.2965

193.5509, -5.5520,
20.6033

■ 6.7851, 2.0487,
4.7496

0.0000, NaN, NaN

■ 80.2297, -0.7008,
11.7069

■ 80.2297, -0.7008,
11.7069

■ 75.8517, 2.5987,
16.4337

■ 84.7661, -3.6709,
6.5370

■ 71.6424, 6.2612,
20.6542

■ 89.4419, -6.3325,
0.9721

■ 67.6212, 10.3073,
24.3029

■ 94.0310, -9.9063,
-1.8856

■ 63.8077, 14.7525,
27.3073

■ 97.2561, -15.0170,
1.9903

■ 60.2233, 19.5988,
29.5933

■ 56.8908, 24.8274,
31.0927

■ 53.8333, 30.3887,
31.7578

■ 51.0719, 36.1901,
31.5878

■ 49.4116, 40.0562,
31.1485

Harmonies

Analogous

The Analogous color harmony consists of three colors that are next to each other on the color wheel.



80.2315, 2.9721, 9.2032



80.2297, -0.7008, 11.7069



80.2315, -5.2641, 12.2971

Triad

The Triadic color harmony groups three colors that are evenly spaced from another and form a triangle on the color wheel.



80.2315, -0.7031, 11.7081



80.2315, -12.8988, 3.4282



80.2315, 1.0332, -2.7178

Complementary

The Complementary color scheme is a pair of colors which are on the opposite of each other on the color wheel.



80.2297, -0.7008, 11.7069



79.6482, -7.1666, -3.5427

Split Complementary

Split-complementary colors differ from the complementary color scheme. The scheme consists of three colors, the original color and two neighbors of the complement color.



80.2315, -3.3017, -4.4650



80.2297, -0.7008, 11.7069



80.2315, -11.2934, -0.7899

Square

The Square scheme is like the rectangle color scheme, but the four colors are evenly spaced on the color wheel.



80.2315, -0.7031, 11.7081



80.2315, -12.2384, 7.6724



80.2315, -7.8056, -3.7404



80.2315, 3.9903, 0.9151

Rectangle

The Rectangle color scheme consists of four colors that form a rectangle on the color wheel.



80.2297, -0.7008, 11.7069



80.2315, -8.1799, 11.5552



80.2315, -7.8056, -3.7404



80.2315, -0.3148, -3.5542

Sweetspot

The Sweet Spot groups the original color and five complimentary colors.



80.2315, -0.7031, 11.7081



97.8410, -4.0439, 7.9668



76.8993, 8.8565, 0.0237



45.0793, -1.7555, 3.9024

0.0000, NaN, NaN



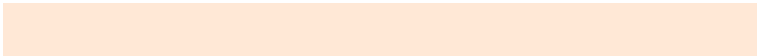
46.2646, -2.4686, 2.5136

Same Dimension

The Same Dimension uses a secret algorithm to generate beautiful new colors.



80.2315, -0.7031, 11.7081



91.5283, 0.1873, 15.1052



84.8443, -8.3608, 16.4671



38.3053, -0.8935, 4.5391



37.9874, 29.8324, 23.9299



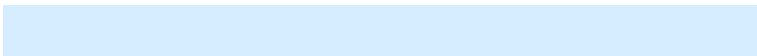
10.8433, 5.8560, 6.7841

Inverse Universe

The Inverse Universe completely reimagines the original color for something new.



79.6482, -7.1666, -3.5427



90.7175, -8.7912, -6.0867



75.0547, 0.5138, -9.4518



38.1124, -3.0326, -0.5065



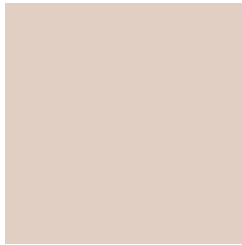
34.9080, 2.1032, -48.1722



10.1080, -0.9986, -10.4783

Previews

White Background



This preview shows how the HunterLab color 80.2297, -0.7008, 11.7069 looks on a white background.

Color Contrast Check

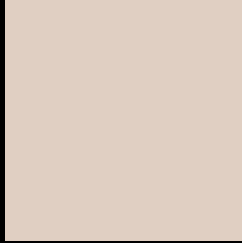
Large Text (above 18pt) WCAG AA × Fail

Any Text WCAG AA × Fail

Large Text (above 18pt) WCAG AAA × Fail

Any Text WCAG AAA × Fail

Black Background



This preview shows how the HunterLab color 80.2297, -0.7008, 11.7069 looks on a black background.

Color Contrast Check

Large Text (above 18pt) WCAG AA ✓ Pass

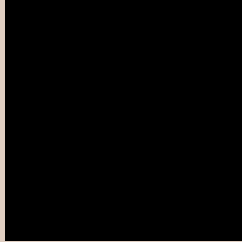
Any Text WCAG AA ✓ Pass

Large Text (above 18pt) WCAG AAA ✓ Pass

Any Text WCAG AAA ✓ Pass

If you want to check with other color combinations, try the [Color Contrast Checker](#).

HunterLab 80.2297, -0.7008, 11.7069 Background



This preview shows how black text looks on a background with the HunterLab color 80.2297, -0.7008, 11.7069.



This preview shows how white text looks on a background with the HunterLab color 80.2297, -0.7008,

Color Blindness Simulation

Color vision deficiency is a very complex topic, and I could not describe the different causes any better than Wikipedia does, so if you want to learn more, you should check out their [article about color blindness](#).

Dichromacy



Original Color

80.2297, -0.7008, 11.7069

Protanopia

80.1828, -3.9316, 11.1625

Deuteranopia

80.3025, 5.7302, 11.4623



Tritanopia

80.0982, 6.5104, -0.1376

Trichromacy



Original Color

80.2297, -0.7008, 11.7069

Protanomaly

80.1670, -2.4180, 11.1718

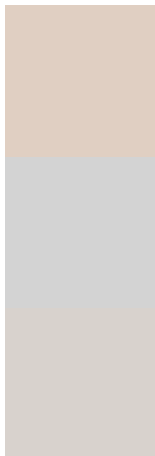
Deuteranomaly

80.1758, 3.7863, 11.2901

Tritanomaly

80.0048, 4.0990, 4.1846

Monochromacy



Original Color

80.2297, -0.7008, 11.7069

Achromatopsia

80.7097, -4.3065, 4.3851

Achromatomaly

80.6845, -3.1824, 7.2192

CSS Examples

Text

The CSS property to change the color of the text to HunterLab 80.2297, -0.7008, 11.7069 is called "color". The color property can be set on classes, ids or directly on the HTML element.

This example shows how text in the color `rgb(224, 207, 194)` looks like.

```
.text, #text, p{  
  color:rgb(224, 207, 194)  
}
```

If you want to add a text shadow in that color use the text-shadow property, you can generate a text shadow directly with our [CSS Text Shadow Generator](#).

Here you see how black text with a 4 pixel rgb(224, 207, 194) colored shadow looks like.

```
.shadow{ text-shadow: 4px 4px 2px rgb(224, 207, 194) }
```

Border

The CSS property to change the border of an element to HunterLab 80.2297, -0.7008, 11.7069 is called "border". The border property can be set on classes, ids or directly on the HTML element.

This example shows the color as border, it can be applied via the CSS property "border" or "border-color".

```
.border, #border, table{ border:4px solid rgb(224, 207, 194) }
```


If only the border color should be changed use the property `border-color`.

```
.border{ border-color:rgb(224, 207, 194) }
```

If you want to add a box shadow in that color use:

Here you see how a box with a 4 pixel `rgb(224, 207, 194)` colored shadow looks like.

```
.boxshadow{ -moz-box-shadow:4px 4px 4px  
4px rgb(224, 207, 194); -webkit-box-  
shadow:4px 4px 4px 4px rgb(224, 207, 194);  
box-shadow:4px 4px 4px 4px rgb(224, 207,  
194) }
```

Background

The CSS property to change the background color of an element to HunterLab 80.2297, -0.7008, 11.7069 is called "background". The background property can be set on classes, ids or directly on the HTML element.

```
.background, #background, body{  
background: rgb(224, 207, 194) }
```

If only the background color should be changed can be used:

```
.background{ background-color: rgb(224,  
207, 194) }
```

This example shows the color as background, it is applied via the CSS property "background".

To optimize and compress your CSS code, you can use our [online CSS compressor and optimizer](#) based on csstidy. If you want to create a linear or radial gradient as background or border, check our [CSS Gradient Generator](#).

Hey! You found this booklet interesting? Support Converting Colors with the new Membership Option!

The pro membership hides all ads, plus gives you double the colors in the color bucket, and more awesome pro features!

[Learn more, Memberships starting at \\$2.50/m!](#)

**Follow me
on Twitter!**

@ConvertingColor