

# Converting Colors

HunterLab(80.3789, 3.6342,  
10.1049)

Have a look what the booklet for  
HunterLab(80.3789, 3.6342,  
10.1049) contains.

<b>HunterLab(80.4542, 3.3718, 10.2627)</b> .....	3
<b><i>Conversions</i></b> .....	4
<b><i>Details</i></b> .....	6
<b><i>Harmonies</i></b> .....	12
<b><i>Previews</i></b> .....	24
<b><i>Color Blindness Simulation</i></b> .....	28
<b><i>CSS Examples</i></b> .....	31

# Color

**HunterLab(80.4542, 3.3718,  
10.2627)**

# Conversions

## Conversions Part 1

Format	Color
Hex	E7CDC6
RGB	231, 205, 198
RGB Percent	91%, 80%, 78%
CMY	0.0941, 0.1961, 0.2235
CMYK	0.00, 0.11, 0.14, 0.09
HSL	13°, 41%, 84%
HSV	13°, 14%, 91%
XYZ	64.9793, 64.7288, 62.4952
YIQ	211.9760, 17.7430, 3.3350

# Conversions

## Conversions Part 2

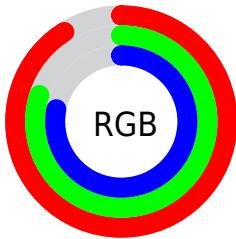
<b>Format</b>	<b>Color</b>
R <sub>Y</sub> B	231, 207, 198
Decimal	15191494
CIE Lab	84.35, 7.95, 6.80
CIE LCh	84, 10.460, 40.528
Yxy	64.7317, 0.3381, 0.3368
Android (android.graphics.Color)	4293381574 (0xFFE7CDC6)
YUV	211.9760, -6.8902, 16.6840
Hunter-Lab	80.4542, 3.3718, 10.2627

# Details

The HunterLab color  $80.4542, 3.3718, 10.2627$  is a light color, and the websafe version is hex  $\text{FFCCCC}$ . A complement of this color would be  $84.3119, -11.2705, -1.4096$ , and the grayscale version is  $81.1548, -4.3302, 4.4093$ .

A 20% lighter version of the original color is  $100.0000, -5.3358, 5.4332$ , and  $57.6722, 3.6250, 8.4751$  is the 20% darker color. If you saturate the color by 10%, you get  $74.5250, 9.4905, 13.8622$ , and if you desaturate by 10%, it is  $86.6595, -2.3983, 6.5067$ .

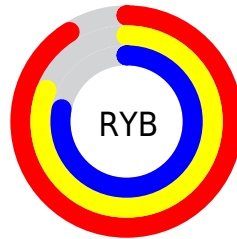
# Distribution



Red (91%)

Green (80%)

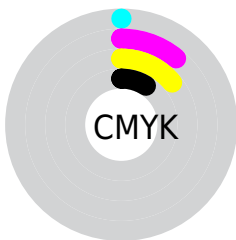
Blue (78%)



Red (91%)

Yellow (81%)

Blue (78%)

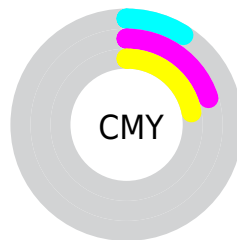


Cyan (0%)

Magenta (11%)

Yellow (14%)

Black (9%)



Cyan (9%)

Magenta (20%)

Yellow (22%)

# Brightness & Saturation Gradients

These gradients show how the HunterLab color 80.4542, 3.3718, 10.2627 changes by changing the brightness by 10 percent. The first figure shows a shift by +10% for each color and the second figure -10%.

Similar to the brightness gradients but the following saturation gradients show a change of the HunterLab color 80.4542, 3.3718, 10.2627 by changing the saturation by 10% instead.



80.4542, 3.3718,  
10.2627

80.4542, 3.3718,  
10.2627

210.1968, -0.7587,  
19.6997

68.7339, 3.6182,  
9.3004

105.6712, 2.7265,  
12.2390

57.6439, 3.8126,  
8.3513

119.1121, 2.3392,  
13.2520

47.2243, 3.9469,  
7.4144

133.0791, 1.9118,  
14.2824

37.5213, 4.0136,  
6.4864

147.5529, 1.4464,  
15.3304

28.5924, 4.0024,  
5.5619

162.5164, 0.9451,  
16.3962

20.5117, 3.8990,  
4.6314

177.9542, 0.4095,

13.3798, 3.6815,

17.4797

3.6764

193.8519, -0.1589,  
18.5809

6.9358, 4.6246,  
4.4399

0.0000, NaN, NaN

80.4542, 3.3718,  
10.2627

80.4542, 3.3718,  
10.2627

74.5250, 9.4905,  
13.8622

86.6595, -2.3983,  
6.5067

68.9066, 15.9887,  
17.2532

93.1023, -7.8455,  
2.6250

63.6485, 22.8662,  
20.3704

97.8412, -12.9290,  
2.7324

58.8073, 30.0862,  
23.1253

■ 54.4474, 37.5479,  
25.4057

■ 50.6385, 45.0568,  
27.0833

■ 47.4491, 52.3042,  
28.0377

■ 44.9343, 58.8733,  
28.2075

■ 43.8044, 62.1136,  
28.0795

# Harmonies

## Analogous

The Analogous color harmony consists of three colors that are next to each other on the color wheel.



80.4560, 5.6728, 6.0819



80.4542, 3.3718, 10.2627



80.4560, -0.9694, 12.7648

# Triad

The Triadic color harmony groups three colors that are evenly spaced from another and form a triangle on the color wheel.



80.4560, 3.3694, 10.2640



80.4560, -13.4230, 7.4569



80.4560, -2.4796, -5.4443

# Complementary

The Complementary color scheme is a pair of colors which are on the opposite of each other on the color wheel.



80.4542, 3.3718, 10.2627



84.3119, -11.2705, -1.4096

# Split Complementary

Split-complementary colors differ from the complementary color scheme. The scheme consists of three colors, the original color and two neighbors of the complement color.



80.4560, -7.5719, -5.0185



80.4542, 3.3718, 10.2627



80.4560, -13.8042, 2.6389

# Square

The Square scheme is like the rectangle color scheme, but the four colors are evenly spaced on the color wheel.



80.4560, 3.3694, 10.2640



80.4560, -10.6321, 11.2160



80.4560, -11.6871, -1.9861



80.4560, 2.2399, -3.1153



# Rectangle

The Rectangle color scheme consists of four colors that form a rectangle on the color wheel.



80.4542, 3.3718, 10.2627



80.4560, -4.3886, 13.2418



80.4560, -11.6871, -1.9861



80.4560, -4.2059, -5.6220

# Sweetspot

The Sweet Spot groups the original color and five complimentary colors.



80.4560, 3.3694, 10.2640



97.1290, -2.8480, 7.1659



79.2348, 11.5077, -3.9577



44.6887, -1.0982, 3.4649

0.0000, NaN, NaN



46.2646, -2.4686, 2.5136



# Same Dimension

The Same Dimension uses a secret algorithm to generate beautiful new colors.



80.4560, 3.3694, 10.2640



88.1080, 5.6497, 12.6316



85.3420, -4.9631, 15.3829



38.5503, 0.2493, 3.9119



33.0201, 45.8147, 21.1489



9.6910, 10.3548, 6.1528

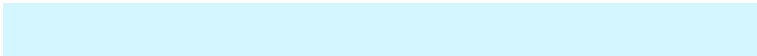


# Inverse Universe

The Inverse Universe completely reimagines the original color for something new.



84.3119, -11.2705, -1.4096



93.2493, -13.8860, -2.9370



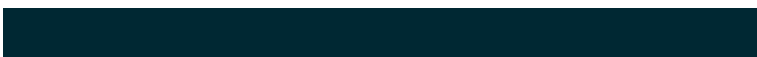
79.2711, -3.0673, -7.7528



39.7363, -4.2494, 0.3222



47.0853, -15.8519, -24.6328

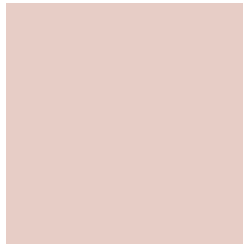


13.2982, -4.9867, -5.8568



# Previews

## White Background



This preview shows how the HunterLab color 80.4542, 3.3718, 10.2627 looks on a white background.

## Color Contrast Check

Large Text (above 18pt) WCAG AA × Fail

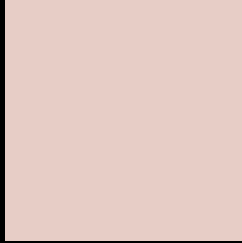
Any Text WCAG AA × Fail

Large Text (above 18pt) WCAG AAA × Fail

Any Text WCAG AAA × Fail



# Black Background



This preview shows how the HunterLab color 80.4542, 3.3718, 10.2627 looks on a black background.

## Color Contrast Check

Large Text (above 18pt) WCAG AA ✓ Pass

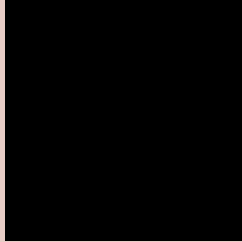
Any Text WCAG AA ✓ Pass

Large Text (above 18pt) WCAG AAA ✓ Pass

Any Text WCAG AAA ✓ Pass

If you want to check with other color combinations, try the [Color Contrast Checker](#).

## HunterLab 80.4542, 3.3718, 10.2627 Background



This preview shows how black text looks on a background with the HunterLab color 80.4542, 3.3718, 10.2627.



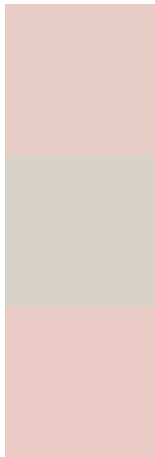
This preview shows how white text looks on a background with the HunterLab color 80.4542, 3.3718,



# Color Blindness Simulation

Color vision deficiency is a very complex topic, and I could not describe the different causes any better than Wikipedia does, so if you want to learn more, you should check out their [article about color blindness](#).

## Dichromacy



### Original Color

80.4542, 3.3718, 10.2627

### Protanopia

80.6610, -3.5003, 9.0239

### Deuteranopia

80.2815, 5.8308, 10.1146



## Tritanopia

80.4956, 9.2740, 0.9075

# Trichromacy



## Original Color

80.4542, 3.3718, 10.2627

## Protanomaly

80.5056, -0.9651, 9.3469

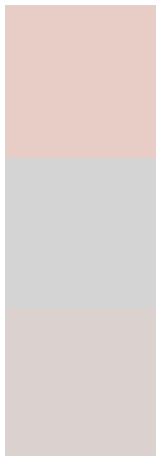
## Deuteranomaly

80.4707, 4.9509, 10.3086

## Tritanomaly

80.4603, 7.2074, 4.2927

# Monochromacy



## Original Color

80.4542, 3.3718, 10.2627

## Achromatopsia

81.1403, -4.3294, 4.4085

## Achromatomaly

80.7255, -1.3529, 6.3624

# CSS Examples

## Text

The CSS property to change the color of the text to HunterLab 80.4542, 3.3718, 10.2627 is called "color". The color property can be set on classes, ids or directly on the HTML element.

This example shows how text in the color `rgb(231, 205, 198)` looks like.

```
.text, #text, p{  
    color:rgb(231, 205, 198)  
}
```

If you want to add a text shadow in that color use the text-shadow property, you can generate a text shadow directly with our [CSS Text Shadow Generator](#).

Here you see how black text with a 4 pixel rgb(231, 205, 198) colored shadow looks like.

```
.shadow{ text-shadow: 4px 4px 2px rgb(231, 205, 198) }
```

## Border

The CSS property to change the border of an element to HunterLab 80.4542, 3.3718, 10.2627 is called "border". The border property can be set on classes, ids or directly on the HTML element.

This example shows the color as border, it can be applied via the CSS property "border" or "border-color".

```
.border, #border, table{ border:4px solid rgb(231, 205, 198) }
```



If only the border color should be changed use the property `border-color`.

```
.border{ border-color:rgb(231, 205, 198) }
```

If you want to add a box shadow in that color use:

Here you see how a box with a 4 pixel `rgb(231, 205, 198)` colored shadow looks like.

```
.boxshadow{ -moz-box-shadow:4px 4px 4px  
4px rgb(231, 205, 198); -webkit-box-  
shadow:4px 4px 4px 4px rgb(231, 205, 198);  
box-shadow:4px 4px 4px 4px rgb(231, 205,  
198) }
```

# Background

The CSS property to change the background color of an element to HunterLab 80.4542, 3.3718, 10.2627 is called "background". The background property can be set on classes, ids or directly on the HTML element.

```
.background, #background, body{  
background: rgb(231, 205, 198) }
```

If only the background color should be changed can be used:

```
.background{ background-color: rgb(231,  
205, 198) }
```

This example shows the color as background, it is applied via the CSS property "background".

To optimize and compress your CSS code, you can use our [online CSS compressor and optimizer](#) based on csstidy. If you want to create a linear or radial gradient as background or border, check our [CSS Gradient Generator](#).

Hey! You found this booklet interesting? Support Converting Colors with the new Membership Option!

The pro membership hides all ads, plus gives you double the colors in the color bucket, and more awesome pro features!

**[Learn more, Memberships starting at \\$2.50/m!](#)**

**Follow me  
on Twitter!**

@ConvertingColor