

Converting Colors

HunterLab(80.4146, 0.2990,
5.9073)

Have a look what the booklet for
HunterLab(80.4146, 0.2990, 5.9073)
contains.

HunterLab(80.3136, 0.3469, 5.9161)	3
<i>Conversions</i>	4
<i>Details</i>	6
<i>Harmonies</i>	12
<i>Previews</i>	24
<i>Color Blindness Simulation</i>	28
<i>CSS Examples</i>	31

Color

**HunterLab(80.3136, 0.3469,
5.9161)**

Conversions

Conversions Part 1

Format	Color
Hex	DDCF CF
RGB	221, 207, 207
RGB Percent	87%, 81%, 81%
CMY	0.1333, 0.1882, 0.1882
CMYK	0.00, 0.06, 0.06, 0.13
HSL	0°, 17%, 84%
HSV	0°, 6%, 87%
XYZ	63.3941, 64.5027, 68.1405
YIQ	211.1860, 8.3440, 2.9680

Conversions

Conversions Part 2

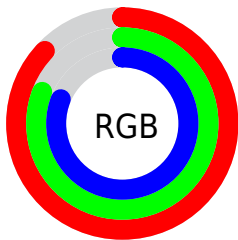
Format	Color
R _Y B	221, 207, 207
Decimal	14536655
CIE Lab	84.23, 4.84, 1.73
CIE LCh	84, 5.145, 19.703
Yxy	64.5056, 0.3234, 0.3290
Android (android.graphics.Color)	4292726735 (0xFFDDCF)
YUV	211.1860, -2.0637, 8.6069
Hunter-Lab	80.3136, 0.3469, 5.9161

Details

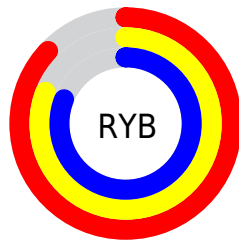
The HunterLab color $80.3136, 0.3469, 5.9161$ is a light color, and the websafe version is hex `CCCCCC`. A complement of this color would be $83.7840, -8.9089, 3.0626$, and the grayscale version is $80.7973, -4.3111, 4.3899$.

A 20% lighter version of the original color is $100.0000, -5.3358, 5.4332$, and $57.6102, 1.0172, 4.5012$ is the 20% darker color. If you saturate the color by 10%, you get $73.1654, 8.3291, 8.0797$, and if you desaturate by 10%, it is $87.8230, -7.3036, 3.8931$.

Distribution



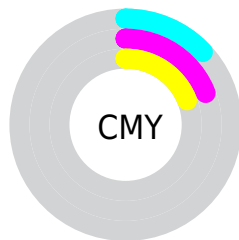
- Red (87%)
- Green (81%)
- Blue (81%)



- Red (87%)
- Yellow (81%)
- Blue (81%)



- Cyan (0%)
- Magenta (6%)
- Yellow (6%)
- Black (13%)



- Cyan (13%)
- Magenta (19%)
- Yellow (19%)

Brightness & Saturation Gradients

These gradients show how the HunterLab color 80.3136, 0.3469, 5.9161 changes by changing the brightness by 10 percent. The first figure shows a shift by +10% for each color and the second figure -10%.

Similar to the brightness gradients but the following saturation gradients show a change of the HunterLab color 80.3136, 0.3469, 5.9161 by changing the saturation by 10% instead.

■ 80.3136, 0.3469,
5.9161

■ 80.3136, 0.3469,
5.9161

210.0031, -4.8654,
13.5705

■ 68.6005, 0.7387,
5.1990

105.5172, -0.5693,
7.4392

■ 57.5181, 1.0859,
4.5102

118.9518, -1.0842,
8.2408

■ 47.1065, 1.3819,
3.8524

132.9127, -1.6346,
9.0683

■ 37.4123, 1.6211,
3.2266

147.3807, -2.2189,
9.9210

■ 28.4928, 1.7956,
2.6342

162.3386, -2.8354,
10.7981

■ 20.4226, 1.8945,
2.0762

177.7709, -3.4828,

■ 13.3025, 1.9011,

11.6992

1.5533

193.6634, -4.1598,
12.6235

■ 6.8418, 2.7193,
1.4233

0.0000, NaN, NaN

■ 80.3136, 0.3469,
5.9161

■ 80.3136, 0.3469,
5.9161

■ 73.1654, 8.3291,
8.0797

■ 87.8230, -7.3036,
3.8931

■ 66.4372, 16.6669,
10.3907

■ 95.6375, -14.6528,
1.9911

■ 60.2119, 25.3316,
12.8469

■ 97.0115, -15.8935,
1.6789

■ 54.5895, 34.2089,
15.4173

■ 49.6888, 43.0356,
18.0221

■ 45.6386, 51.3405,
20.5124

■ 42.5559, 58.4475,
22.6700

■ 40.5074, 63.6314,
24.2569

■ 39.4553, 66.4597,
25.1261

Harmonies

Analogous

The Analogous color harmony consists of three colors that are next to each other on the color wheel.



80.3154, 0.5562, 3.5396



80.3136, 0.3469, 5.9161



80.3154, -1.1171, 7.8241

Triad

The Triadic color harmony groups three colors that are evenly spaced from another and form a triangle on the color wheel.



80.3154, 0.3448, 5.9174



80.3154, -7.9689, 7.3094



80.3154, -5.1580, -0.3191

Complementary

The Complementary color scheme is a pair of colors which are on the opposite of each other on the color wheel.



80.3136, 0.3469, 5.9161



83.7840, -8.9089, 3.0626

Split Complementary

Split-complementary colors differ from the complementary color scheme. The scheme consists of three colors, the original color and two neighbors of the complement color.



80.3154, -7.4139, 0.7591



80.3136, 0.3469, 5.9161



80.3154, -9.0234, 5.1951

Square

The Square scheme is like the rectangle color scheme, but the four colors are evenly spaced on the color wheel.



80.3154, 0.3448, 5.9174



80.3154, -5.9244, 8.6104



80.3154, -8.8215, 2.7948



80.3154, -2.6419, -0.1112

Rectangle

The Rectangle color scheme consists of four colors that form a rectangle on the color wheel.



80.3136, 0.3469, 5.9161



80.3154, -2.5941, 8.5948



80.3154, -8.8215, 2.7948



80.3154, -5.9714, -0.0938

Sweetspot

The Sweet Spot groups the original color and five complimentary colors.



80.3154, 0.3448, 5.9174



98.2170, -3.5252, 5.9120



80.7584, 2.7479, -0.4113



45.4804, -1.6726, 2.7241

0.0000, NaN, NaN



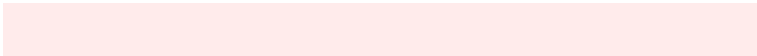
46.2646, -2.4686, 2.5136

Same Dimension

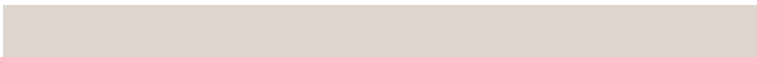
The Same Dimension uses a secret algorithm to generate beautiful new colors.



80.3154, 0.3448, 5.9174



92.9656, 2.0001, 7.3866



82.4446, -3.2687, 8.2917



36.1277, 1.2856, 3.0411



29.8847, 51.1696, 19.3106



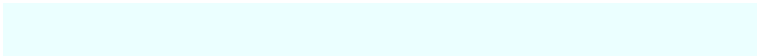
7.6079, 13.0195, 4.9159

Inverse Universe

The Inverse Universe completely reimagines the original color for something new.



83.7840, -8.9089, 3.0626



98.1482, -11.8296, 3.1200



81.5965, -5.3458, 0.4793



38.5084, -5.0692, 1.0806



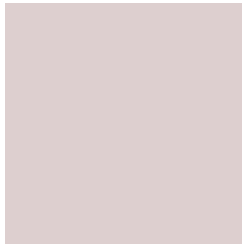
57.4936, -30.4700, -6.0861



14.6345, -7.7563, -1.5482

Previews

White Background



This preview shows how the HunterLab color 80.3136, 0.3469, 5.9161 looks on a white background.

Color Contrast Check

Large Text (above 18pt) WCAG AA × Fail

Any Text WCAG AA × Fail

Large Text (above 18pt) WCAG AAA × Fail

Any Text WCAG AAA × Fail

Black Background



This preview shows how the HunterLab color 80.3136, 0.3469, 5.9161 looks on a black background.

Color Contrast Check

Large Text (above 18pt) WCAG AA ✓ Pass

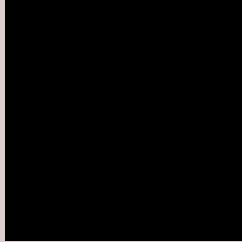
Any Text WCAG AA ✓ Pass

Large Text (above 18pt) WCAG AAA ✓ Pass

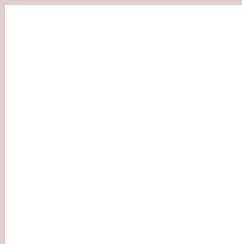
Any Text WCAG AAA ✓ Pass

If you want to check with other color combinations, try the [Color Contrast Checker](#).

HunterLab 80.3136, 0.3469, 5.9161 Background



This preview shows how black text looks on a background with the HunterLab color 80.3136, 0.3469, 5.9161.



This preview shows how white text looks on a background with the HunterLab color 80.3136, 0.3469,

5.9161.

Color Blindness Simulation

Color vision deficiency is a very complex topic, and I could not describe the different causes any better than Wikipedia does, so if you want to learn more, you should check out their [article about color blindness](#).

Dichromacy



Original Color

80.3136, 0.3469, 5.9161

Protanopia

80.2815, -2.8242, 5.3484

Deuteranopia

80.1591, 6.0149, 5.3605



Tritanopia

80.3561, 4.4625, -0.8800

Trichromacy



Original Color

80.3136, 0.3469, 5.9161

Protanomaly

80.2605, -1.3302, 5.3502

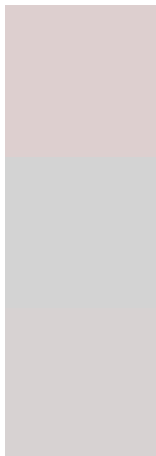
Deuteranomaly

80.0442, 4.1081, 5.1929

Tritanomaly

80.3928, 2.7252, 1.6729

Monochromacy



Original Color

80.3136, 0.3469, 5.9161

Achromatopsia

80.7097, -4.3065, 4.3851

Achromatomaly

80.7424, -2.6779, 4.9333

CSS Examples

Text

The CSS property to change the color of the text to HunterLab 80.3136, 0.3469, 5.9161 is called "color". The color property can be set on classes, ids or directly on the HTML element.

This example shows how text in the color `rgb(221, 207, 207)` looks like.

```
.text, #text, p{  
    color:rgb(221, 207, 207)  
}
```

If you want to add a text shadow in that color use the text-shadow property, you can generate a text shadow directly with our [CSS Text Shadow Generator](#).

Here you see how black text with a 4 pixel rgb(221, 207, 207) colored shadow looks like.

```
.shadow{ text-shadow: 4px 4px 2px rgb(221, 207, 207) }
```

Border

The CSS property to change the border of an element to HunterLab 80.3136, 0.3469, 5.9161 is called "border". The border property can be set on classes, ids or directly on the HTML element.

This example shows the color as border, it can be applied via the CSS property "border" or "border-color".

```
.border, #border, table{ border:4px solid rgb(221, 207, 207) }
```


If only the border color should be changed use the property `border-color`.

```
.border{ border-color:rgb(221, 207, 207) }
```

If you want to add a box shadow in that color use:

Here you see how a box with a 4 pixel `rgb(221, 207, 207)` colored shadow looks like.

```
.boxshadow{ -moz-box-shadow:4px 4px 4px 4px rgb(221, 207, 207); -webkit-box-shadow:4px 4px 4px 4px rgb(221, 207, 207); box-shadow:4px 4px 4px 4px rgb(221, 207, 207) }
```

Background

The CSS property to change the background color of an element to HunterLab 80.3136, 0.3469, 5.9161 is called "background". The background property can be set on classes, ids or directly on the HTML element.

```
.background, #background, body{  
background: rgb(221, 207, 207) }
```

If only the background color should be changed can be used:

```
.background{ background-color: rgb(221,  
207, 207) }
```

This example shows the color as background, it is applied via the CSS property "background".

To optimize and compress your CSS code, you can use our [online CSS compressor and optimizer](#) based on csstidy. If you want to create a linear or radial gradient as background or border, check our [CSS Gradient Generator](#).

Hey! You found this booklet interesting? Support Converting Colors with the new Membership Option!

The pro membership hides all ads, plus gives you double the colors in the color bucket, and more awesome pro features!

[Learn more, Memberships starting at \\$2.50/m!](#)

**Follow me
on Twitter!**

@ConvertingColor