

Converting Colors

HunterLab(80.4236, -1.9947,
13.1923)

Have a look what the booklet for
HunterLab(80.4236, -1.9947,
13.1923) contains.

HunterLab(80.3501, -2.0086, 13.1051)	3
<i>Conversions</i>	4
<i>Details</i>	6
<i>Harmonies</i>	12
<i>Previews</i>	24
<i>Color Blindness Simulation</i>	28
<i>CSS Examples</i>	31

Color

**HunterLab(80.3501, -2.0086,
13.1051)**

Conversions

Conversions Part 1

Format	Color
Hex	DFD0BF
RGB	223, 208, 191
RGB Percent	87%, 82%, 75%
CMY	0.1255, 0.1843, 0.2510
CMYK	0.00, 0.07, 0.14, 0.13
HSL	32°, 33%, 81%
HSV	32°, 14%, 87%
XYZ	62.3913, 64.5614, 58.4635
YIQ	210.5470, 14.3970, -2.1070

Conversions

Conversions Part 2

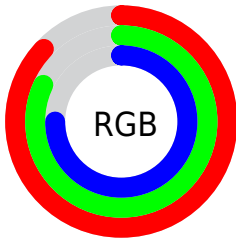
Format	Color
R _Y B	219, 223, 191
Decimal	14667967
CIE Lab	84.26, 2.40, 10.30
CIE LCh	84, 10.577, 76.903
Yxy	64.5642, 0.3365, 0.3482
Android (android.graphics.Color)	4292858047 (0xFFDFD0BF)
YUV	210.5470, -9.6367, 10.9213
Hunter-Lab	80.3501, -2.0086, 13.1051

Details

The HunterLab color **80.3501, -2.0086, 13.1051** is a light color, and the websafe version is hex **CCCCCC**. A complement of this color would be **77.8110, -5.6939, -5.3484**, and the grayscale version is **80.5521, -4.2981, 4.3765**.

A 20% lighter version of the original color is **99.7474, -6.7215, 9.0414**, and **57.6810, -1.0124, 10.8096** is the 20% darker color. If you saturate the color by 10%, you get **76.6334, 0.1922, 18.2969**, and if you desaturate by 10%, it is **84.1944, -3.8736, 7.3407**.

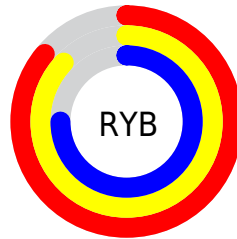
Distribution



Red (87%)

Green (82%)

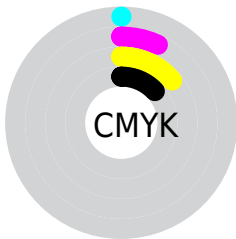
Blue (75%)



Red (86%)

Yellow (87%)

Blue (75%)

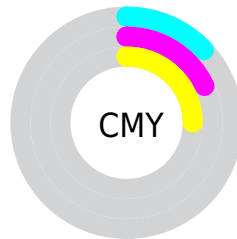


Cyan (0%)

Magenta (7%)

Yellow (14%)

Black (13%)



Cyan (13%)

Magenta (18%)

Yellow (25%)

Brightness & Saturation Gradients

These gradients show how the HunterLab color 80.3501, -2.0086, 13.1051 changes by changing the brightness by 10 percent. The first figure shows a shift by +10% for each color and the second figure -10%.

Similar to the brightness gradients but the following saturation gradients show a change of the HunterLab color 80.3501, -2.0086, 13.1051 by changing the saturation by 10% instead.

■ 80.3501, -2.0086,
13.1051

■ 80.3501, -2.0086,
13.1051

210.0534, -8.0855,
23.8126

■ 68.6351, -1.5005,
11.9659

■ 105.5572, -3.1423,
15.4067

■ 57.5508, -1.0304,
10.8280

118.9935, -3.7592,
16.5708

■ 47.1371, -0.6038,
9.6880

132.9559, -4.4079,
17.7459

■ 37.4406, -0.2250,
8.5386

147.4254, -5.0871,
18.9330

■ 28.5187, 0.1005,
7.3690

162.3848, -5.7955,
20.1327

■ 20.4457, 0.3652,
6.1607

177.8185, -6.5320,

■ 13.3226, 0.5575,

21.3457

4.8803

193.7124, -7.2957,
22.5722

■ 6.8663, 1.1543,
4.8064

0.0000, NaN, NaN

■ 80.3501, -2.0086,
13.1051

■ 80.3501, -2.0086,
13.1051

■ 76.6334, 0.1922,
18.2969

■ 84.1944, -3.8736,
7.3407

■ 73.0488, 2.7587,
22.8554

■ 88.1519, -5.4197,
1.0531

■ 69.6090, 5.7088,
26.7221

■ 92.1139, -7.2349,
-4.2617

■ 66.3254, 9.0579,
29.8371

■ 95.4772, -12.6464,
-0.1389

63.2098, 12.8132,
32.1454

97.1741, -15.3104,
1.8861

60.2741, 16.9693,
33.6040

57.5294, 21.5020,
34.1949

54.9846, 26.3604,
33.9466

53.6311, 29.1896,
33.5582

Harmonies

Analogous

The Analogous color harmony consists of three colors that are next to each other on the color wheel.



80.3519, 2.6623, 11.0207



80.3501, -2.0086, 13.1051



80.3519, -7.1814, 12.9614

Triad

The Triadic color harmony groups three colors that are evenly spaced from another and form a triangle on the color wheel.



80.3519, -2.0109, 13.1063



80.3519, -13.6464, 1.5557



80.3519, 3.1488, -2.4077

Complementary

The Complementary color scheme is a pair of colors which are on the opposite of each other on the color wheel.



80.3501, -2.0086, 13.1051



77.8110, -5.6939, -5.3484

Split Complementary

Split-complementary colors differ from the complementary color scheme. The scheme consists of three colors, the original color and two neighbors of the complement color.



80.3519, -1.3606, -5.2806



80.3501, -2.0086, 13.1051



80.3519, -11.0169, -2.8944

Square

The Square scheme is like the rectangle color scheme, but the four colors are evenly spaced on the color wheel.



80.3519, -2.0109, 13.1063



80.3519, -13.8104, 6.5016



80.3519, -6.5473, -5.4642



80.3519, 5.6919, 2.1861

Rectangle

The Rectangle color scheme consists of four colors that form a rectangle on the color wheel.



80.3501, -2.0086, 13.1051



80.3519, -10.2142, 11.6215



80.3519, -6.5473, -5.4642



80.3519, 1.8075, -3.6191

Sweetspot

The Sweet Spot groups the original color and five complimentary colors.



80.3519, -2.0109, 13.1063



98.1573, -4.5723, 8.3207



75.7822, 9.3204, 0.9415



45.2528, -2.0459, 4.0958

0.0000, NaN, NaN



46.2646, -2.4686, 2.5136

Same Dimension

The Same Dimension uses a secret algorithm to generate beautiful new colors.



80.3519, -2.0109, 13.1063



92.3215, -1.6694, 17.0057



84.9358, -9.8077, 17.7573



38.6010, -1.3920, 4.8586



41.4012, 21.7593, 25.8922



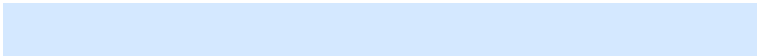
11.6917, 4.0290, 7.2749

Inverse Universe

The Inverse Universe completely reimagines the original color for something new.



77.8110, -5.6939, -5.3484



88.8022, -6.7637, -8.5651



73.3048, 2.1645, -11.2575



37.8114, -2.5385, -0.8738



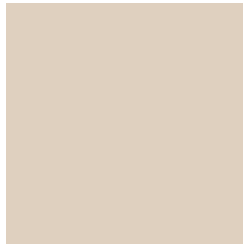
30.3903, 10.7397, -61.1691



9.0457, 0.8128, -13.0610

Previews

White Background



This preview shows how the HunterLab color 80.3501, -2.0086, 13.1051 looks on a white background.

Color Contrast Check

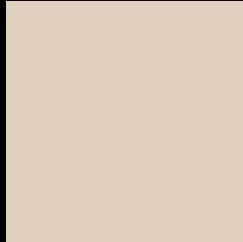
Large Text (above 18pt) WCAG AA × Fail

Any Text WCAG AA × Fail

Large Text (above 18pt) WCAG AAA × Fail

Any Text WCAG AAA × Fail

Black Background



This preview shows how the HunterLab color 80.3501, -2.0086, 13.1051 looks on a black background.

Color Contrast Check

Large Text (above 18pt) WCAG AA ✓ Pass

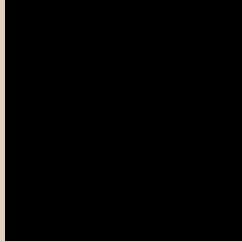
Any Text WCAG AA ✓ Pass

Large Text (above 18pt) WCAG AAA ✓ Pass

Any Text WCAG AAA ✓ Pass

If you want to check with other color combinations, try the [Color Contrast Checker](#).

HunterLab 80.3501, -2.0086, 13.1051 Background



This preview shows how black text looks on a background with the HunterLab color 80.3501, -2.0086, 13.1051.



This preview shows how white text looks on a background with the HunterLab color 80.3501, -2.0086,

Color Blindness Simulation

Color vision deficiency is a very complex topic, and I could not describe the different causes any better than Wikipedia does, so if you want to learn more, you should check out their [article about color blindness](#).

Dichromacy



Original Color

80.3501, -2.0086, 13.1051

Protanopia

80.5012, -4.5661, 12.7953

Deuteranopia

80.3257, 5.6408, 12.7856



Tritanopia

80.4263, 6.1568, -0.2496

Trichromacy



Original Color

80.3501, -2.0086, 13.1051

Protanomaly

80.3880, -3.3866, 12.6945

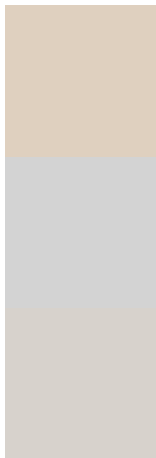
Deuteranomaly

80.3892, 2.8142, 12.8044

Tritanomaly

80.2713, 3.4080, 4.9677

Monochromacy



Original Color

80.3501, -2.0086, 13.1051

Achromatopsia

80.7097, -4.3065, 4.3851

Achromatomaly

80.5605, -3.6722, 7.5332

CSS Examples

Text

The CSS property to change the color of the text to HunterLab 80.3501, -2.0086, 13.1051 is called "color". The color property can be set on classes, ids or directly on the HTML element.

This example shows how text in the color `rgb(223, 208, 191)` looks like.

```
.text, #text, p{  
    color:rgb(223, 208, 191)  
}
```

If you want to add a text shadow in that color use the text-shadow property, you can generate a text shadow directly with our [CSS Text Shadow Generator](#).

Here you see how black text with a 4 pixel rgb(223, 208, 191) colored shadow looks like.

```
.shadow{ text-shadow: 4px 4px 2px rgb(223, 208, 191) }
```

Border

The CSS property to change the border of an element to HunterLab 80.3501, -2.0086, 13.1051 is called "border". The border property can be set on classes, ids or directly on the HTML element.

This example shows the color as border, it can be applied via the CSS property "border" or "border-color".

```
.border, #border, table{ border:4px solid rgb(223, 208, 191) }
```


If only the border color should be changed use the property `border-color`.

```
.border{ border-color:rgb(223, 208, 191) }
```

If you want to add a box shadow in that color use:

Here you see how a box with a 4 pixel `rgb(223, 208, 191)` colored shadow looks like.

```
.boxshadow{ -moz-box-shadow:4px 4px 4px  
4px rgb(223, 208, 191); -webkit-box-  
shadow:4px 4px 4px 4px rgb(223, 208, 191);  
box-shadow:4px 4px 4px 4px rgb(223, 208,  
191) }
```

Background

The CSS property to change the background color of an element to HunterLab 80.3501, -2.0086, 13.1051 is called "background". The background property can be set on classes, ids or directly on the HTML element.

```
.background, #background, body{  
background: rgb(223, 208, 191) }
```

If only the background color should be changed can be used:

```
.background{ background-color: rgb(223,  
208, 191) }
```

This example shows the color as background, it is applied via the CSS property "background".

To optimize and compress your CSS code, you can use our [online CSS compressor and optimizer](#) based on csstidy. If you want to create a linear or radial gradient as background or border, check our [CSS Gradient Generator](#).

Hey! You found this booklet interesting? Support Converting Colors with the new Membership Option!

The pro membership hides all ads, plus gives you double the colors in the color bucket, and more awesome pro features!

[Learn more, Memberships starting at \\$2.50/m!](#)

**Follow me
on Twitter!**

@ConvertingColor