

Converting Colors

HunterLab(80.4297, -0.0146,
11.9361)

Have a look what the booklet for
HunterLab(80.4297, -0.0146,
11.9361) contains.

HunterLab(80.4297, -0.0146, 11.9361)	3
<i>Conversions</i>	4
<i>Details</i>	6
<i>Harmonies</i>	12
<i>Previews</i>	24
<i>Color Blindness Simulation</i>	28
<i>CSS Examples</i>	31

Color

**HunterLab(80.4297, -0.0146,
11.9361)**

Conversions

Conversions Part 1

Format	Color
Hex	E2CFC2
RGB	226, 207, 194
RGB Percent	89%, 81%, 76%
CMY	0.1137, 0.1882, 0.2392
CMYK	0.00, 0.08, 0.14, 0.11
HSL	24°, 36%, 82%
HSV	24°, 14%, 89%
XYZ	63.4144, 64.6894, 60.1828
YIQ	211.1990, 15.4970, -0.0150

Conversions

Conversions Part 2

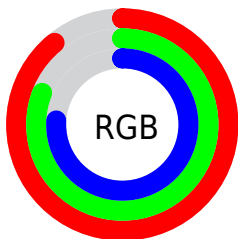
Format	Color
R _Y B	226, 216, 194
Decimal	14864322
CIE Lab	84.32, 4.47, 8.84
CIE LCh	84, 9.906, 63.152
Yxy	64.6922, 0.3368, 0.3436
Android (android.graphics.Color)	4293054402 (0xFFE2CFC2)
YUV	211.1990, -8.4791, 12.9805
Hunter-Lab	80.4297, -0.0146, 11.9361

Details

The HunterLab color **80.4297, -0.0146, 11.9361** is a light color, and the websafe version is hex **CCCCCC**. A complement of this color would be **80.3413, -7.8034, -3.7295**, and the grayscale version is **80.8275, -4.3128, 4.3915**.

A 20% lighter version of the original color is **99.8409, -6.2079, 7.7041**, and **57.6385, 0.4084, 10.0019** is the 20% darker color. If you saturate the color by 10%, you get **75.8457, 3.6623, 16.5247**, and if you desaturate by 10%, it is **85.1855, -3.3571, 6.9310**.

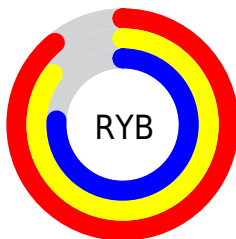
Distribution



Red (89%)

Green (81%)

Blue (76%)



Red (89%)

Yellow (85%)

Blue (76%)

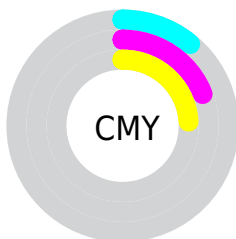


Cyan (0%)

Magenta (8%)

Yellow (14%)

Black (11%)



Cyan (11%)

Magenta (19%)

Yellow (24%)

Brightness & Saturation Gradients

These gradients show how the HunterLab color 80.4297, -0.0146, 11.9361 changes by changing the brightness by 10 percent. The first figure shows a shift by +10% for each color and the second figure -10%.

Similar to the brightness gradients but the following saturation gradients show a change of the HunterLab color 80.4297, -0.0146, 11.9361 by changing the saturation by 10% instead.

80.4297, -0.0146,
11.9361

80.4297, -0.0146,
11.9361

210.1631, -5.3600,
22.1094

68.7107, 0.3949,
10.8715

105.6443, -0.9645,
14.1007

57.6220, 0.7610,
9.8133

119.0842, -1.4950,
15.2012

47.2038, 1.0771,
8.7591

133.0501, -2.0606,
16.3154

37.5023, 1.3378,
7.7034

147.5229, -2.6594,
17.4441

28.5751, 1.5355,
6.6377

162.4854, -3.2901,
18.5875

20.4962, 1.6599,
5.5473

177.9222, -3.9512,

13.3663, 1.6951,

19.7461

4.4053

193.8191, -4.6415,
20.9200

■ 6.9195, 2.4476,
4.8436

0.0000, NaN, NaN

■ 80.4297, -0.0146,
11.9361

■ 80.4297, -0.0146,
11.9361

■ 75.8457, 3.6623,
16.5247

■ 85.1855, -3.3571,
6.9310

■ 71.4460, 7.7081,
20.6326

■ 90.0919, -6.3871,
1.5579

■ 67.2528, 12.1430,
24.1918

■ 94.9026, -10.4326,
-0.8099

■ 63.2890, 16.9801,
27.1258

■ 97.4212, -14.4265,
2.2002

■ 59.5800, 22.2156,
29.3550

■ 56.1527, 27.8200,
30.8047

■ 53.0345, 33.7258,
31.4219

■ 50.2508, 39.8141,
31.2040

■ 48.7812, 43.3555,
30.8178

Harmonies

Analogous

The Analogous color harmony consists of three colors that are next to each other on the color wheel.



80.4315, 3.7066, 9.1052



80.4297, -0.0146, 11.9361



80.4315, -4.8109, 12.7855

Triad

The Triadic color harmony groups three colors that are evenly spaced from another and form a triangle on the color wheel.



80.4315, -0.0169, 11.9373



80.4315, -13.4466, 3.8860



80.4315, 0.8968, -3.4541

Complementary

The Complementary color scheme is a pair of colors which are on the opposite of each other on the color wheel.



80.4297, -0.0146, 11.9361



80.3413, -7.8034, -3.7295

Split Complementary

Split-complementary colors differ from the complementary color scheme. The scheme consists of three colors, the original color and two neighbors of the complement color.



80.4315, -3.7796, -5.0479



80.4297, -0.0146, 11.9361



80.4315, -11.9973, -0.6546

Square

The Square scheme is like the rectangle color scheme, but the four colors are evenly spaced on the color wheel.



80.4315, -0.0169, 11.9373



80.4315, -12.4927, 8.3035



80.4315, -8.4873, -3.9944



80.4315, 4.2429, 0.2443

Rectangle

The Rectangle color scheme consists of four colors that form a rectangle on the color wheel.



80.4297, -0.0146, 11.9361



80.4315, -7.9498, 12.1559



80.4315, -8.4873, -3.9944



80.4315, -0.5756, -4.2634

Sweetspot

The Sweet Spot groups the original color and five complimentary colors.



80.4315, -0.0169, 11.9373



97.7537, -3.8976, 7.8688



77.1799, 9.9282, -0.7302



45.0313, -1.6752, 3.8489

0.0000, NaN, NaN



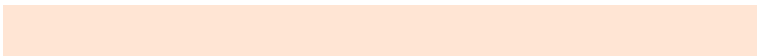
46.2646, -2.4686, 2.5136

Same Dimension

The Same Dimension uses a secret algorithm to generate beautiful new colors.



80.4315, -0.0169, 11.9373



90.6544, 1.1852, 15.2955



85.2836, -8.1006, 16.9262



38.2237, -0.7554, 4.4506



37.1417, 31.9785, 23.4464



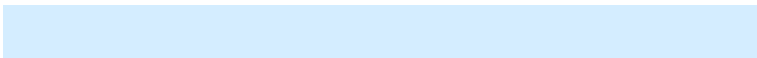
10.6245, 6.3558, 6.6580

Inverse Universe

The Inverse Universe completely reimagines the original color for something new.



80.3413, -7.8034, -3.7295



90.5293, -9.5684, -6.3448



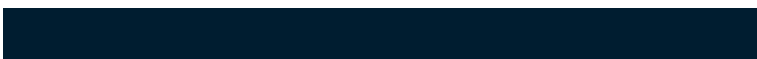
75.4881, 0.2858, -9.9923



38.1959, -3.1691, -0.4050



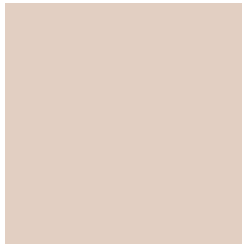
36.2261, -0.1928, -44.8634



10.4124, -1.4839, -9.8113

Previews

White Background



This preview shows how the HunterLab color 80.4297, -0.0146, 11.9361 looks on a white background.

Color Contrast Check

Large Text (above 18pt) WCAG AA × Fail

Any Text WCAG AA × Fail

Large Text (above 18pt) WCAG AAA × Fail

Any Text WCAG AAA × Fail

Black Background



This preview shows how the HunterLab color 80.4297, -0.0146, 11.9361 looks on a black background.

Color Contrast Check

Large Text (above 18pt) WCAG AA ✓ Pass

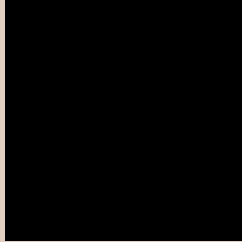
Any Text WCAG AA ✓ Pass

Large Text (above 18pt) WCAG AAA ✓ Pass

Any Text WCAG AAA ✓ Pass

If you want to check with other color combinations, try the [Color Contrast Checker](#).

HunterLab 80.4297, -0.0146, 11.9361 Background



This preview shows how black text looks on a background with the HunterLab color 80.4297, -0.0146, 11.9361.



This preview shows how white text looks on a background with the HunterLab color 80.4297, -0.0146,

Color Blindness Simulation

Color vision deficiency is a very complex topic, and I could not describe the different causes any better than Wikipedia does, so if you want to learn more, you should check out their [article about color blindness](#).

Dichromacy



Original Color

80.4297, -0.0146, 11.9361

Protanopia

80.5846, -4.1091, 11.5974

Deuteranopia

80.4093, 6.0882, 11.5851



Tritanopia

80.3022, 7.1915, 0.1260

Trichromacy



Original Color

80.4297, -0.0146, 11.9361

Protanomaly

80.5687, -2.5939, 11.6067

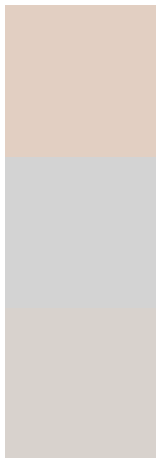
Deuteranomaly

80.2804, 4.1394, 11.4105

Tritanomaly

80.2078, 4.7830, 4.4360

Monochromacy



Original Color

80.4297, -0.0146, 11.9361

Achromatopsia

80.7097, -4.3065, 4.3851

Achromatomaly

80.6845, -3.1824, 7.2192

CSS Examples

Text

The CSS property to change the color of the text to HunterLab 80.4297, -0.0146, 11.9361 is called "color". The color property can be set on classes, ids or directly on the HTML element.

This example shows how text in the color `rgb(226, 207, 194)` looks like.

```
.text, #text, p{  
    color:rgb(226, 207, 194)  
}
```

If you want to add a text shadow in that color use the text-shadow property, you can generate a text shadow directly with our [CSS Text Shadow Generator](#).

Here you see how black text with a 4 pixel rgb(226, 207, 194) colored shadow looks like.

```
.shadow{ text-shadow: 4px 4px 2px rgb(226, 207, 194) }
```

Border

The CSS property to change the border of an element to HunterLab 80.4297, -0.0146, 11.9361 is called "border". The border property can be set on classes, ids or directly on the HTML element.

This example shows the color as border, it can be applied via the CSS property "border" or "border-color".

```
.border, #border, table{ border:4px solid rgb(226, 207, 194) }
```


If only the border color should be changed use the property `border-color`.

```
.border{ border-color:rgb(226, 207, 194) }
```

If you want to add a box shadow in that color use:

Here you see how a box with a 4 pixel `rgb(226, 207, 194)` colored shadow looks like.

```
.boxshadow{ -moz-box-shadow:4px 4px 4px  
4px rgb(226, 207, 194); -webkit-box-  
shadow:4px 4px 4px 4px rgb(226, 207, 194);  
box-shadow:4px 4px 4px 4px rgb(226, 207,  
194) }
```

Background

The CSS property to change the background color of an element to HunterLab 80.4297, -0.0146, 11.9361 is called "background". The background property can be set on classes, ids or directly on the HTML element.

```
.background, #background, body{  
background: rgb(226, 207, 194) }
```

If only the background color should be changed can be used:

```
.background{ background-color: rgb(226,  
207, 194) }
```

This example shows the color as background, it is applied via the CSS property "background".

To optimize and compress your CSS code, you can use our [online CSS compressor and optimizer](#) based on csstidy. If you want to create a linear or radial gradient as background or border, check our [CSS Gradient Generator](#).

Hey! You found this booklet interesting? Support Converting Colors with the new Membership Option!

The pro membership hides all ads, plus gives you double the colors in the color bucket, and more awesome pro features!

[Learn more, Memberships starting at \\$2.50/m!](#)

**Follow me
on Twitter!**

@ConvertingColor