

Converting Colors

HunterLab(80.4609, 3.0454,
5.9071)

Have a look what the booklet for
HunterLab(80.4609, 3.0454, 5.9071)
contains.

HunterLab(80.6092, 2.8963, 6.3027)	3
<i>Conversions</i>	4
<i>Details</i>	6
<i>Harmonies</i>	12
<i>Previews</i>	24
<i>Color Blindness Simulation</i>	28
<i>CSS Examples</i>	31

Color

**HunterLab(80.6092, 2.8963,
6.3027)**

Conversions

Conversions Part 1

Format	Color
Hex	E3CECF
RGB	227, 206, 207
RGB Percent	89%, 81%, 81%
CMY	0.1098, 0.1921, 0.1882
CMYK	0.00, 0.09, 0.09, 0.11
HSL	357°, 27%, 85%
HSV	357°, 9%, 89%
XYZ	65.0123, 64.9784, 68.1470
YIQ	212.3930, 12.1950, 4.7630

Conversions

Conversions Part 2

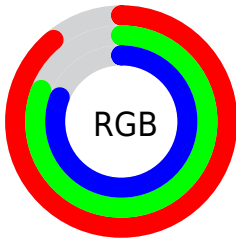
Format	Color
RYB	227, 206, 207
Decimal	14929615
CIELab	84.47, 7.47, 2.15
CIElCh	84, 7.774, 16.077
Yxy	64.9813, 0.3281, 0.3280
Android (android.graphics.Color)	4293119695 (0xFFE3CECF)
YUV	212.3930, -2.6587, 12.8103
Hunter-Lab	80.6092, 2.8963, 6.3027

Details

The HunterLab color $80.6092, 2.8963, 6.3027$ is a light color, and the websafe version is hex `CCCCCC`. A complement of this color would be $85.7628, -11.3594, 2.9034$, and the grayscale version is $81.3185, -4.3390, 4.4182$.

A 20% lighter version of the original color is $100.0000, -5.3358, 5.4332$, and $57.9025, 3.4577, 4.8807$ is the 20% darker color. If you saturate the color by 10%, you get $73.3777, 11.3973, 8.1583$, and if you desaturate by 10%, it is $88.2287, -5.2793, 4.6434$.

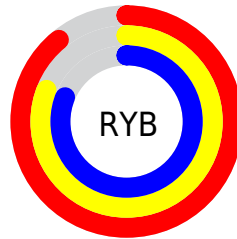
Distribution



Red (89%)

Green (81%)

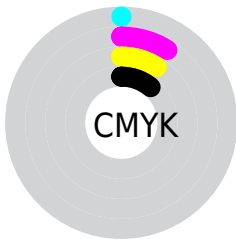
Blue (81%)



Red (89%)

Yellow (81%)

Blue (81%)

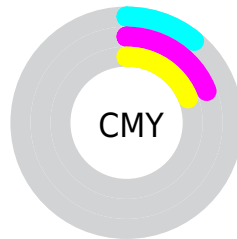


Cyan (0%)

Magenta (9%)

Yellow (9%)

Black (11%)



Cyan (11%)

Magenta (19%)

Yellow (19%)

Brightness & Saturation Gradients

These gradients show how the HunterLab color 80.6092, 2.8963, 6.3027 changes by changing the brightness by 10 percent. The first figure shows a shift by +10% for each color and the second figure -10%.

Similar to the brightness gradients but the following saturation gradients show a change of the HunterLab color 80.6092, 2.8963, 6.3027 by changing the saturation by 10% instead.

80.6092, 2.8963,
6.3027

80.6092, 2.8963,
6.3027

210.4102, -1.4055,
14.1071

68.8810, 3.1659,
5.5652

105.8409, 2.2081,
7.8638

57.7826, 3.3846,
4.8548

119.2887, 1.8007,
8.6830

47.3541, 3.5446,
4.1739

133.2623, 1.3537,
9.5276

37.6415, 3.6387,
3.5233

147.7426, 0.8695,
10.3967

28.7022, 3.6570,
2.9037

162.7123, 0.3499,
11.2898

20.6100, 3.5858,
2.3157

178.1561, -0.2034,

13.4651, 3.4041,

12.2063

1.7583

194.0597, -0.7890,
13.1455

■ 7.0378, 4.2491,
1.6511

0.0000, NaN, NaN

■ 80.6092, 2.8963,
6.3027

■ 80.6092, 2.8963,
6.3027

■ 73.3777, 11.3973,
8.1583

■ 88.2287, -5.2793,
4.6434

■ 66.5992, 20.2323,
10.2281

■ 96.1752, -13.1515,
3.1509

■ 60.3637, 29.3426,
12.5226

■ 97.5044, -14.1293,
2.3058

■ 54.7793, 38.5639,
15.0219

■ 49.9718, 47.5594,
17.6535

■ 46.0722, 55.7727,
20.2679

■ 43.1908, 62.4713,
22.6350

■ 41.3724, 66.9683,
24.4954

■ 40.4914, 69.1760,
25.6338

Harmonies

Analogous

The Analogous color harmony consists of three colors that are next to each other on the color wheel.



80.6110, 2.9682, 2.6838



80.6092, 2.8963, 6.3027



80.6110, 0.8673, 9.2727

Triad

The Triadic color harmony groups three colors that are evenly spaced from another and form a triangle on the color wheel.



80.6110, 2.8941, 6.3040



80.6110, -9.5419, 9.0981



80.6110, -6.0700, -2.7128

Complementary

The Complementary color scheme is a pair of colors which are on the opposite of each other on the color wheel.



80.6092, 2.8963, 6.3027



85.7628, -11.3594, 2.9034

Split Complementary

Split-complementary colors differ from the complementary color scheme. The scheme consists of three colors, the original color and two neighbors of the complement color.



80.6110, -9.3511, -0.8232



80.6092, 2.8963, 6.3027



80.6110, -11.3302, 6.0555

Square

The Square scheme is like the rectangle color scheme, but the four colors are evenly spaced on the color wheel.



80.6110, 2.8941, 6.3040



80.6110, -6.3349, 10.8337



80.6110, -11.2610, 2.4235



80.6110, -2.2558, -2.6386

Rectangle

The Rectangle color scheme consists of four colors that form a rectangle on the color wheel.



80.6092, 2.8963, 6.3027



80.6110, -1.2972, 10.5329



80.6110, -11.2610, 2.4235



80.6110, -7.2703, -2.2825

Sweetspot

The Sweet Spot groups the original color and five complimentary colors.



80.6110, 2.8941, 6.3040



97.3423, -2.5502, 5.9882



81.1493, 5.9955, -2.9887



44.7092, -0.8328, 2.8405

0.0000, NaN, NaN



46.2646, -2.4686, 2.5136

Same Dimension

The Same Dimension uses a secret algorithm to generate beautiful new colors.



80.6110, 2.8941, 6.3040



90.4366, 5.0406, 7.5608



83.4384, -2.1787, 9.8810



37.9197, 1.4475, 2.9888



30.8914, 52.9626, 19.4956



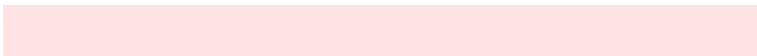
8.4209, 14.4839, 4.9533

Inverse Universe

The Inverse Universe completely reimagines the original color for something new.



80.6110, 2.8941, 6.3040



90.4366, 5.0406, 7.5608



82.8130, -6.3786, -1.1135



37.9197, 1.4475, 2.9888



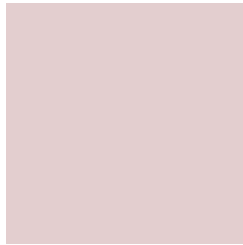
30.8914, 52.9626, 19.4956



8.4209, 14.4839, 4.9533

Previews

White Background



This preview shows how the HunterLab color 80.6092, 2.8963, 6.3027 looks on a white background.

Color Contrast Check

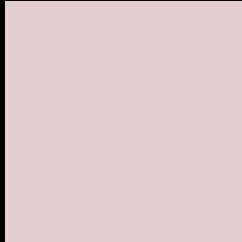
Large Text (above 18pt) WCAG AA × Fail

Any Text WCAG AA × Fail

Large Text (above 18pt) WCAG AAA × Fail

Any Text WCAG AAA × Fail

Black Background



This preview shows how the HunterLab color 80.6092, 2.8963, 6.3027 looks on a black background.

Color Contrast Check

Large Text (above 18pt) WCAG AA ✓ Pass

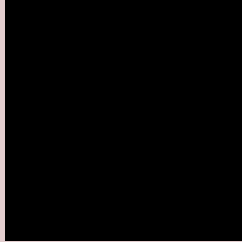
Any Text WCAG AA ✓ Pass

Large Text (above 18pt) WCAG AAA ✓ Pass

Any Text WCAG AAA ✓ Pass

If you want to check with other color combinations, try the [Color Contrast Checker](#).

HunterLab 80.6092, 2.8963, 6.3027 Background



This preview shows how black text looks on a background with the HunterLab color 80.6092, 2.8963, 6.3027.



This preview shows how white text looks on a background with the HunterLab color 80.6092, 2.8963,

Color Blindness Simulation

Color vision deficiency is a very complex topic, and I could not describe the different causes any better than Wikipedia does, so if you want to learn more, you should check out their [article about color blindness](#).

Dichromacy



Original Color

80.6092, 2.8963, 6.3027

Protanopia

80.7117, -2.8459, 5.3727

Deuteranopia

80.5273, 5.6724, 6.2567



Tritanopia

80.6294, 6.8361, 0.0132

Trichromacy



Original Color

80.6092, 2.8963, 6.3027

Protanomaly

80.7558, -1.1876, 5.9283

Deuteranomaly

80.6168, 4.4519, 6.3386

Tritanomaly

80.6616, 5.1004, 2.5365

Monochromacy



Original Color

80.6092, 2.8963, 6.3027

Achromatopsia

81.1403, -4.3294, 4.4085

Achromatomaly

80.9309, -2.0270, 5.1650

CSS Examples

Text

The CSS property to change the color of the text to HunterLab 80.6092, 2.8963, 6.3027 is called "color". The color property can be set on classes, ids or directly on the HTML element.

This example shows how text in the color `rgb(227, 206, 207)` looks like.

```
.text, #text, p{  
    color:rgb(227, 206, 207)  
}
```

If you want to add a text shadow in that color use the text-shadow property, you can generate a text shadow directly with our [CSS Text Shadow Generator](#).

Here you see how black text with a 4 pixel rgb(227, 206, 207) colored shadow looks like.

```
.shadow{ text-shadow: 4px 4px 2px rgb(227, 206, 207) }
```

Border

The CSS property to change the border of an element to HunterLab 80.6092, 2.8963, 6.3027 is called "border".

The border property can be set on classes, ids or directly on the HTML element.

This example shows the color as border, it can be applied via the CSS property "border" or "border-color".

```
.border, #border, table{ border:4px solid rgb(227, 206, 207) }
```


If only the border color should be changed use the property `border-color`.

```
.border{ border-color:rgb(227, 206, 207) }
```

If you want to add a box shadow in that color use:

Here you see how a box with a 4 pixel `rgb(227, 206, 207)` colored shadow looks like.

```
.boxshadow{ -moz-box-shadow:4px 4px 4px 4px rgb(227, 206, 207); -webkit-box-shadow:4px 4px 4px 4px rgb(227, 206, 207); box-shadow:4px 4px 4px 4px rgb(227, 206, 207) }
```

Background

The CSS property to change the background color of an element to HunterLab 80.6092, 2.8963, 6.3027 is called "background". The background property can be set on classes, ids or directly on the HTML element.

```
.background, #background, body{  
background: rgb(227, 206, 207) }
```

If only the background color should be changed can be used:

```
.background{ background-color: rgb(227,  
206, 207) }
```

This example shows the color as background, it is applied via the CSS property "background".

To optimize and compress your CSS code, you can use our [online CSS compressor and optimizer](#) based on csstidy. If you want to create a linear or radial gradient as background or border, check our [CSS Gradient Generator](#).

Hey! You found this booklet interesting? Support Converting Colors with the new Membership Option!

The pro membership hides all ads, plus gives you double the colors in the color bucket, and more awesome pro features!

[Learn more, Memberships starting at \\$2.50/m!](#)

**Follow me
on Twitter!**

@ConvertingColor