

Converting Colors

HunterLab(80.4856, 1.0993,
17.5365)

Have a look what the booklet for
HunterLab(80.4856, 1.0993,
17.5365) contains.

HunterLab(80.5000, 1.0738, 17.4247)	3
<i>Conversions</i>	4
<i>Details</i>	6
<i>Harmonies</i>	12
<i>Previews</i>	24
<i>Color Blindness Simulation</i>	28
<i>CSS Examples</i>	31

Color

**HunterLab(80.5000, 1.0738,
17.4247)**

Conversions

Conversions Part 1

Format	Color
Hex	E9CEB5
RGB	233, 206, 181
RGB Percent	91%, 81%, 71%
CMY	0.0863, 0.1921, 0.2902
CMYK	0.00, 0.12, 0.22, 0.09
HSL	29°, 54%, 81%
HSV	29°, 22%, 91%
XYZ	64.0161, 64.8025, 52.8502
YIQ	211.2230, 24.1170, -2.0510

Conversions

Conversions Part 2

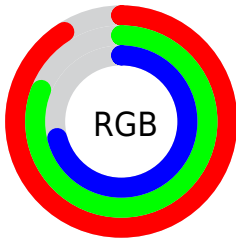
Format	Color
R _Y B	233, 229, 181
Decimal	15322805
CIE Lab	84.38, 5.60, 15.90
CIE LCh	84, 16.853, 70.596
Yxy	64.8054, 0.3524, 0.3567
Android (android.graphics.Color)	4293512885 (0xFFE9CEB5)
YUV	211.2230, -14.8999, 19.0984
Hunter-Lab	80.5000, 1.0738, 17.4247

Details

The HunterLab color $80.5000, 1.0738, 17.4247$ is a light color, and the websafe version is hex `FFCCCC`. A complement of this color would be $77.9854, -7.5652, -10.6885$, and the grayscale version is $80.8620, -4.3146, 4.3934$.

A 20% lighter version of the original color is $99.4457, -8.3811, 13.3628$, and $57.7599, 1.6937, 14.6580$ is the 20% darker color. If you saturate the color by 10%, you get $76.3712, 4.3010, 22.1264$, and if you desaturate by 10%, it is $84.7900, -1.7815, 12.1370$.

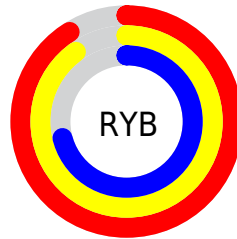
Distribution



Red (91%)

Green (81%)

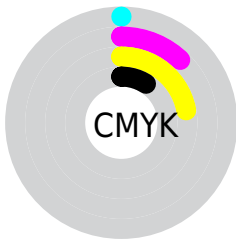
Blue (71%)



Red (91%)

Yellow (90%)

Blue (71%)

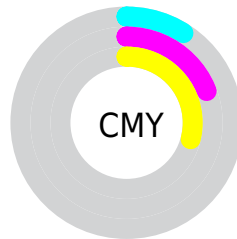


Cyan (0%)

Magenta (12%)

Yellow (22%)

Black (9%)



Cyan (9%)

Magenta (19%)

Yellow (29%)

Brightness & Saturation Gradients

These gradients show how the HunterLab color 80.5000, 1.0738, 17.4247 changes by changing the brightness by 10 percent. The first figure shows a shift by +10% for each color and the second figure -10%.

Similar to the brightness gradients but the following saturation gradients show a change of the HunterLab color 80.5000, 1.0738, 17.4247 by changing the saturation by 10% instead.

80.5000, 1.0738,
17.4247

80.5000, 1.0738,
17.4247

210.2599, -3.8786,
30.2247

68.7774, 1.4302,
15.9918

105.7214, 0.2224,
20.2649

57.6849, 1.7406,
14.5397

119.1643, -0.2617,
21.6784

47.2627, 1.9977,
13.0604

133.1333, -0.7826,
23.0920

37.5568, 2.1953,
11.5404

147.6090, -1.3383,
24.5079

28.6249, 2.3250,
9.9593

162.5744, -1.9271,
25.9278

20.5408, 2.3751,
8.2844

178.0139, -2.5476,

13.4050, 2.3274,

27.3532

6.6303

193.9134, -3.1985,
28.7852

■ 6.9661, 3.1303,
4.8763

0.0000, NaN, NaN

■ 80.5000, 1.0738,
17.4247

■ 80.5000, 1.0738,
17.4247

■ 76.3712, 4.3010,
22.1264

■ 84.7900, -1.7815,
12.1370

■ 72.4126, 7.9318,
26.1718

■ 89.2227, -4.2838,
6.3213

■ 68.6421, 11.9819,
29.4915

■ 93.7880, -6.4632,
0.0337

■ 65.0768, 16.4592,
32.0159

■ 97.8136, -12.0059,
2.7154

■ 61.7345, 21.3558,
33.6838

■ 98.0121, -12.3216,
2.9483

■ 58.6330, 26.6399,
34.4557

■ 55.7881, 32.2457,
34.3372

■ 53.7783, 36.6742,
33.7800

Harmonies

Analogous

The Analogous color harmony consists of three colors that are next to each other on the color wheel.



80.5018, 8.1800, 13.6478



80.5000, 1.0738, 17.4247



80.5018, -7.2131, 17.9215

Triad

The Triadic color harmony groups three colors that are evenly spaced from another and form a triangle on the color wheel.



80.5018, 1.0712, 17.4259



80.5018, -19.3934, 1.5402



80.5018, 6.3503, -8.0186

Complementary

The Complementary color scheme is a pair of colors which are on the opposite of each other on the color wheel.



80.5000, 1.0738, 17.4247



77.9854, -7.5652, -10.6885

Split Complementary

Split-complementary colors differ from the complementary color scheme. The scheme consists of three colors, the original color and two neighbors of the complement color.



80.5018, -1.3442, -12.0140



80.5000, 1.0738, 17.4247



80.5018, -16.0626, -6.1357

Square

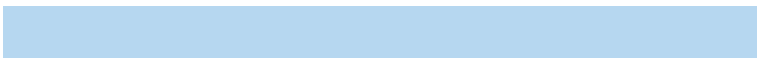
The Square scheme is like the rectangle color scheme, but the four colors are evenly spaced on the color wheel.



80.5018, 1.0712, 17.4259



80.5018, -18.8057, 9.2642



80.5018, -9.5334, -11.2921



80.5018, 11.3122, -0.8266

Rectangle

The Rectangle color scheme consists of four colors that form a rectangle on the color wheel.



80.5000, 1.0738, 17.4247



80.5018, -12.2623, 16.3848



80.5018, -9.5334, -11.2921



80.5018, 3.9850, -9.8115

Sweetspot

The Sweet Spot groups the original color and five complimentary colors.



80.5018, 1.0712, 17.4259



96.5052, -3.4843, 10.1106



74.1367, 18.5868, -2.0957



44.5099, -1.5342, 4.8585

0.0000, NaN, NaN



46.2646, -2.4686, 2.5136

Same Dimension

The Same Dimension uses a secret algorithm to generate beautiful new colors.



80.5018, 1.0712, 17.4259



86.9534, 2.8559, 21.8979



88.2959, -11.8002, 24.8453



40.3104, -1.1846, 4.9345



40.8116, 26.9054, 25.6189



12.2460, 5.6982, 7.6457

Inverse Universe

The Inverse Universe completely reimagines the original color for something new.



77.9854, -7.5652, -10.6885



83.5844, -8.6804, -15.7570



70.3313, 5.4525, -21.5555



39.8028, -2.9325, -0.7323



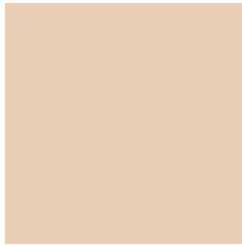
33.6778, 6.5082, -56.1437



10.4076, 0.0671, -13.1535

Previews

White Background



This preview shows how the HunterLab color 80.5000, 1.0738, 17.4247 looks on a white background.

Color Contrast Check

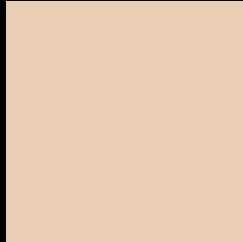
Large Text (above 18pt) WCAG AA × Fail

Any Text WCAG AA × Fail

Large Text (above 18pt) WCAG AAA × Fail

Any Text WCAG AAA × Fail

Black Background



This preview shows how the HunterLab color 80.5000, 1.0738, 17.4247 looks on a black background.

Color Contrast Check

Large Text (above 18pt) WCAG AA ✓ Pass

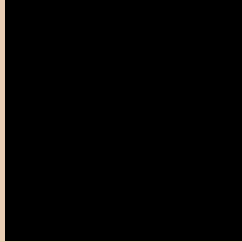
Any Text WCAG AA ✓ Pass

Large Text (above 18pt) WCAG AAA ✓ Pass

Any Text WCAG AAA ✓ Pass

If you want to check with other color combinations, try the [Color Contrast Checker](#).

HunterLab 80.5000, 1.0738, 17.4247 Background



This preview shows how black text looks on a background with the HunterLab color 80.5000, 1.0738, 17.4247.



This preview shows how white text looks on a background with the HunterLab color 80.5000, 1.0738,

Color Blindness Simulation

Color vision deficiency is a very complex topic, and I could not describe the different causes any better than Wikipedia does, so if you want to learn more, you should check out their [article about color blindness](#).

Dichromacy



Original Color

80.5000, 1.0738, 17.4247

Protanopia

80.5508, -4.8738, 16.5745

Deuteranopia

80.4923, 5.6669, 17.0995



Tritanopia

80.4907, 10.6865, 1.4301

Trichromacy



Original Color

80.5000, 1.0738, 17.4247

Protanomaly

80.6138, -3.1362, 17.0695

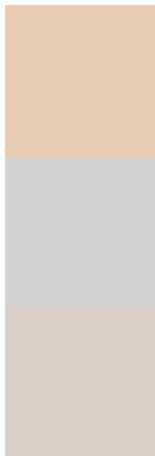
Deuteranomaly

80.4613, 4.0496, 17.0397

Tritanomaly

80.5632, 7.1241, 7.7254

Monochromacy



Original Color

80.5000, 1.0738, 17.4247

Achromatopsia

80.7097, -4.3065, 4.3851

Achromatomaly

80.5178, -2.4845, 9.3339

CSS Examples

Text

The CSS property to change the color of the text to HunterLab 80.5000, 1.0738, 17.4247 is called "color". The color property can be set on classes, ids or directly on the HTML element.

This example shows how text in the color `rgb(233, 206, 181)` looks like.

```
.text, #text, p{  
    color:rgb(233, 206, 181)  
}
```

If you want to add a text shadow in that color use the text-shadow property, you can generate a text shadow directly with our [CSS Text Shadow Generator](#).

Here you see how black text with a 4 pixel rgb(233, 206, 181) colored shadow looks like.

```
.shadow{ text-shadow: 4px 4px 2px rgb(233, 206, 181) }
```

Border

The CSS property to change the border of an element to HunterLab 80.5000, 1.0738, 17.4247 is called "border". The border property can be set on classes, ids or directly on the HTML element.

This example shows the color as border, it can be applied via the CSS property "border" or "border-color".

```
.border, #border, table{ border:4px solid rgb(233, 206, 181) }
```


If only the border color should be changed use the property border-color.

```
.border{ border-color:rgb(233, 206, 181) }
```

If you want to add a box shadow in that color use:

Here you see how a box with a 4 pixel rgb(233, 206, 181) colored shadow looks like.

```
.boxshadow{ -moz-box-shadow:4px 4px 4px  
4px rgb(233, 206, 181); -webkit-box-  
shadow:4px 4px 4px 4px rgb(233, 206, 181);  
box-shadow:4px 4px 4px 4px rgb(233, 206,  
181) }
```

Background

The CSS property to change the background color of an element to HunterLab 80.5000, 1.0738, 17.4247 is called "background". The background property can be set on classes, ids or directly on the HTML element.

```
.background, #background, body{  
background: rgb(233, 206, 181) }
```

If only the background color should be changed can be used:

```
.background{ background-color: rgb(233,  
206, 181) }
```

This example shows the color as background, it is applied via the CSS property "background".

To optimize and compress your CSS code, you can use our [online CSS compressor and optimizer](#) based on csstidy. If you want to create a linear or radial gradient as background or border, check our [CSS Gradient Generator](#).

Hey! You found this booklet interesting? Support Converting Colors with the new Membership Option!

The pro membership hides all ads, plus gives you double the colors in the color bucket, and more awesome pro features!

[Learn more, Memberships starting at \\$2.50/m!](#)

**Follow me
on Twitter!**

@ConvertingColor