

Converting Colors

HunterLab(80.5658, 0.0911,
9.5605)

Have a look what the booklet for
HunterLab(80.5658, 0.0911, 9.5605)
contains.

HunterLab(80.4009, 0.2288, 9.2509)	3
<i>Conversions</i>	4
<i>Details</i>	6
<i>Harmonies</i>	12
<i>Previews</i>	24
<i>Color Blindness Simulation</i>	28
<i>CSS Examples</i>	31

Color

**HunterLab(80.4009, 0.2288,
9.2509)**

Conversions

Conversions Part 1

Format	Color
Hex	E0CFC8
RGB	224, 207, 200
RGB Percent	88%, 81%, 78%
CMY	0.1216, 0.1882, 0.2157
CMYK	0.00, 0.08, 0.11, 0.12
HSL	18°, 28%, 83%
HSV	18°, 11%, 88%
XYZ	63.4786, 64.6430, 63.7752
YIQ	211.2850, 12.3790, 1.4270

Conversions

Conversions Part 2

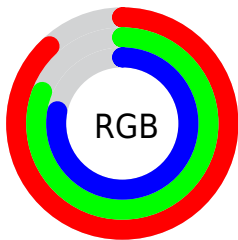
Format	Color
R_{YB}	224, 210, 200
Decimal	14733256
CIE Lab	84.30, 4.72, 5.59
CIE LCh	84, 7.322, 49.816
Yxy	64.6459, 0.3308, 0.3369
Android (android.graphics.Color)	4292923336 (0xFFE0CFC8)
YUV	211.2850, -5.5635, 11.1511
Hunter-Lab	80.4009, 0.2288, 9.2509

Details

The HunterLab color $80.4009, 0.2288, 9.2509$ is a light color, and the websafe version is hex `CCCCCC`. A complement of this color would be $82.0278, -8.4426, -0.5760$, and the grayscale version is $80.8533, -4.3141, 4.3929$.

A 20% lighter version of the original color is $100.0000, -5.3358, 5.4332$, and $57.6999, 0.9334, 7.6272$ is the 20% darker color. If you saturate the color by 10%, you get $75.0797, 5.0741, 13.2565$, and if you desaturate by 10%, it is $85.9348, -4.2955, 5.0026$.

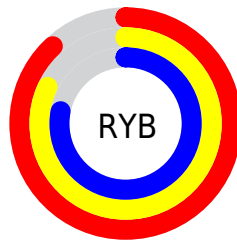
Distribution



Red (88%)

Green (81%)

Blue (78%)



Red (88%)

Yellow (82%)

Blue (78%)

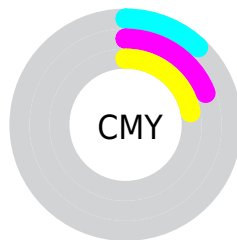


Cyan (0%)

Magenta (8%)

Yellow (11%)

Black (12%)



Cyan (12%)

Magenta (19%)

Yellow (22%)

Brightness & Saturation Gradients

These gradients show how the HunterLab color 80.4009, 0.2288, 9.2509 changes by changing the brightness by 10 percent. The first figure shows a shift by +10% for each color and the second figure -10%.

Similar to the brightness gradients but the following saturation gradients show a change of the HunterLab color 80.4009, 0.2288, 9.2509 by changing the saturation by 10% instead.

80.4009, 0.2288,
9.2509

80.4009, 0.2288,
9.2509

210.1234, -5.0277,
18.2578

68.6833, 0.6264,
8.3481

105.6128, -0.6986,
11.1175

57.5962, 0.9799,
7.4622

119.0513, -1.2187,
12.0794

47.1796, 1.2826,
6.5933

133.0160, -1.7741,
13.0608

37.4800, 1.5289,
5.7392

147.4876, -2.3632,
14.0617

28.5547, 1.7112,
4.8961

162.4490, -2.9845,
15.0820

20.4779, 1.8187,
4.0572

177.8847, -3.6364,

13.3505, 1.8348,

16.1216

3.2093

193.7805, -4.3178,
17.1803

6.9003, 2.6148,
3.7359

0.0000, NaN, NaN

80.4009, 0.2288,
9.2509

80.4009, 0.2288,
9.2509

75.0797, 5.0741,
13.2565

85.9348, -4.2955,
5.0026

69.9926, 10.2762,
16.9654

91.6535, -8.5239,
0.5473

65.1730, 15.8531,
20.3151

97.1230, -14.8092,
1.8329

60.6577, 21.8080,
23.2274

97.2561, -15.0170,
1.9903

■ 56.4888, 28.1138,
25.6097

■ 52.7129, 34.6955,
27.3606

■ 49.3788, 41.4108,
28.3845

■ 46.5329, 48.0337,
28.6226

■ 44.3519, 53.7985,
28.2712

Harmonies

Analogous

The Analogous color harmony consists of three colors that are next to each other on the color wheel.



80.4027, 2.3302, 6.5796



80.4009, 0.2288, 9.2509



80.4027, -3.0653, 10.5989

Triad

The Triadic color harmony groups three colors that are evenly spaced from another and form a triangle on the color wheel.



80.4027, 0.2266, 9.2522



80.4027, -11.0027, 5.5335



80.4027, -1.9314, -2.0763

Complementary

The Complementary color scheme is a pair of colors which are on the opposite of each other on the color wheel.



80.4009, 0.2288, 9.2509



82.0278, -8.4426, -0.5760

Split Complementary

Split-complementary colors differ from the complementary color scheme. The scheme consists of three colors, the original color and two neighbors of the complement color.



80.4027, -5.5161, -2.3866



80.4009, 0.2288, 9.2509



80.4027, -10.7112, 2.1093

Square

The Square scheme is like the rectangle color scheme, but the four colors are evenly spaced on the color wheel.



80.4027, 0.2266, 9.2522



80.4027, -9.5210, 8.5154



80.4027, -8.7176, -0.8249



80.4027, 1.0692, 0.0053

Rectangle

The Rectangle color scheme consists of four colors that form a rectangle on the color wheel.



80.4009, 0.2288, 9.2509



80.4027, -5.4725, 10.6056



80.4027, -8.7176, -0.8249



80.4027, -3.1094, -2.3946

Sweetspot

The Sweet Spot groups the original color and five complimentary colors.



80.4027, 0.2266, 9.2522



98.0352, -3.7981, 6.9527



78.8523, 6.7645, -0.7560



45.1142, -1.5646, 3.4028

0.0000, NaN, NaN



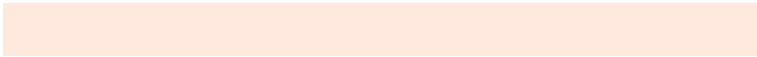
46.2646, -2.4686, 2.5136

Same Dimension

The Same Dimension uses a secret algorithm to generate beautiful new colors.



80.4027, 0.2266, 9.2522



91.6361, 1.5630, 11.8478



84.0101, -5.8370, 13.0992



37.8801, -0.1703, 4.0759



34.0918, 40.3040, 21.7128



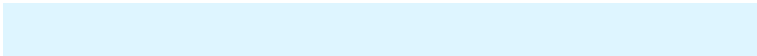
9.7837, 8.4058, 6.1759

Inverse Universe

The Inverse Universe completely reimagines the original color for something new.



82.0278, -8.4426, -0.5760



93.9297, -10.6775, -2.0259



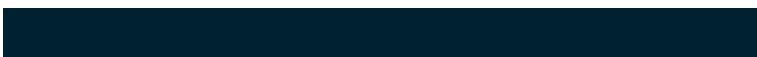
78.3712, -2.4192, -5.1020



38.5503, -3.7450, 0.0229



42.0703, -9.4925, -32.0925



11.7432, -3.4687, -7.1900

Previews

White Background



This preview shows how the HunterLab color 80.4009, 0.2288, 9.2509 looks on a white background.

Color Contrast Check

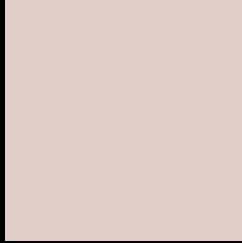
Large Text (above 18pt) WCAG AA × Fail

Any Text WCAG AA × Fail

Large Text (above 18pt) WCAG AAA × Fail

Any Text WCAG AAA × Fail

Black Background



This preview shows how the HunterLab color 80.4009, 0.2288, 9.2509 looks on a black background.

Color Contrast Check

Large Text (above 18pt) WCAG AA ✓ Pass

Any Text WCAG AA ✓ Pass

Large Text (above 18pt) WCAG AAA ✓ Pass

Any Text WCAG AAA ✓ Pass

If you want to check with other color combinations, try the [Color Contrast Checker](#).

HunterLab 80.4009, 0.2288, 9.2509 Background



This preview shows how black text looks on a background with the HunterLab color 80.4009, 0.2288, 9.2509.

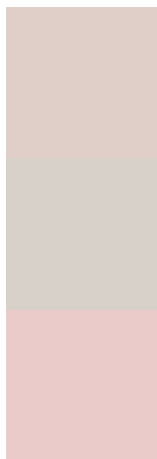


This preview shows how white text looks on a background with the HunterLab color 80.4009, 0.2288,

Color Blindness Simulation

Color vision deficiency is a very complex topic, and I could not describe the different causes any better than Wikipedia does, so if you want to learn more, you should check out their [article about color blindness](#).

Dichromacy



Original Color

80.4009, 0.2288, 9.2509

Protanopia

80.2601, -3.3179, 8.5772

Deuteranopia

80.2629, 5.9425, 8.7425



Tritanopia

80.4263, 6.1568, -0.2496

Trichromacy



Original Color

80.4009, 0.2288, 9.2509

Protanomaly

80.2427, -1.8117, 8.5840

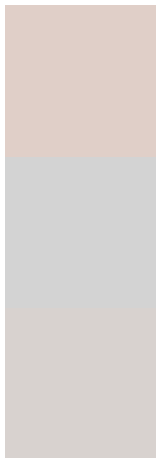
Deuteranomaly

80.1410, 4.0140, 8.5715

Tritanomaly

80.3962, 4.0796, 3.1867

Monochromacy



Original Color

80.4009, 0.2288, 9.2509

Achromatopsia

80.7097, -4.3065, 4.3851

Achromatomaly

80.7447, -2.8534, 6.3584

CSS Examples

Text

The CSS property to change the color of the text to HunterLab 80.4009, 0.2288, 9.2509 is called "color". The color property can be set on classes, ids or directly on the HTML element.

This example shows how text in the color `rgb(224, 207, 200)` looks like.

```
.text, #text, p{  
    color:rgb(224, 207, 200)  
}
```

If you want to add a text shadow in that color use the text-shadow property, you can generate a text shadow directly with our [CSS Text Shadow Generator](#).

Here you see how black text with a 4 pixel rgb(224, 207, 200) colored shadow looks like.

```
.shadow{ text-shadow: 4px 4px 2px rgb(224, 207, 200) }
```

Border

The CSS property to change the border of an element to HunterLab 80.4009, 0.2288, 9.2509 is called "border".

The border property can be set on classes, ids or directly on the HTML element.

This example shows the color as border, it can be applied via the CSS property "border" or "border-color".

```
.border, #border, table{ border:4px solid rgb(224, 207, 200) }
```


If only the border color should be changed use the property `border-color`.

```
.border{ border-color:rgb(224, 207, 200) }
```

If you want to add a box shadow in that color use:

Here you see how a box with a 4 pixel `rgb(224, 207, 200)` colored shadow looks like.

```
.boxshadow{ -moz-box-shadow:4px 4px 4px  
4px rgb(224, 207, 200); -webkit-box-  
shadow:4px 4px 4px 4px rgb(224, 207, 200);  
box-shadow:4px 4px 4px 4px rgb(224, 207,  
200) }
```

Background

The CSS property to change the background color of an element to HunterLab 80.4009, 0.2288, 9.2509 is called "background". The background property can be set on classes, ids or directly on the HTML element.

```
.background, #background, body{  
background: rgb(224, 207, 200) }
```

If only the background color should be changed can be used:

```
.background{ background-color: rgb(224,  
207, 200) }
```

This example shows the color as background, it is applied via the CSS property "background".

To optimize and compress your CSS code, you can use our [online CSS compressor and optimizer](#) based on csstidy. If you want to create a linear or radial gradient as background or border, check our [CSS Gradient Generator](#).

Hey! You found this booklet interesting? Support Converting Colors with the new Membership Option!

The pro membership hides all ads, plus gives you double the colors in the color bucket, and more awesome pro features!

[Learn more, Memberships starting at \\$2.50/m!](#)

**Follow me
on Twitter!**

@ConvertingColor