

Converting Colors

HunterLab(80.6640, 4.6970,
4.6868)

Have a look what the booklet for
HunterLab(80.6640, 4.6970, 4.6868)
contains.

HunterLab(80.6373, 4.7669, 4.4587)	3
<i>Conversions</i>	4
<i>Details</i>	6
<i>Harmonies</i>	12
<i>Previews</i>	24
<i>Color Blindness Simulation</i>	28
<i>CSS Examples</i>	31

Color

**HunterLab(80.6373, 4.7669,
4.4587)**

Conversions

Conversions Part 1

Format	Color
Hex	E5CDD3
RGB	229, 205, 211
RGB Percent	90%, 80%, 83%
CMY	0.1020, 0.1961, 0.1725
CMYK	0.00, 0.10, 0.08, 0.10
HSL	345°, 32%, 85%
HSV	345°, 10%, 90%
XYZ	65.9022, 65.0237, 70.7054
YIQ	212.8600, 12.3780, 6.9540

Conversions

Conversions Part 2

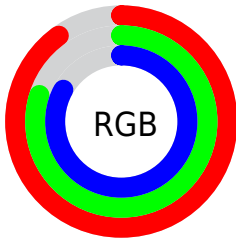
Format	Color
RYB	229, 205, 211
Decimal	15060435
CIELab	84.50, 9.37, 0.08
CIELCh	84, 9.371, 0.480
Yxy	65.0266, 0.3268, 0.3225
Android (android.graphics.Color)	4293250515 (0xFFE5CDD3)
YUV	212.8600, -0.9170, 14.1548
Hunter-Lab	80.6373, 4.7669, 4.4587

Details

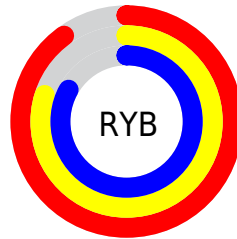
The HunterLab color $80.6373, 4.7669, 4.4587$ is a light color, and the websafe version is hex `CCCCCC`. A complement of this color would be $86.2247, -13.1899, 4.8937$, and the grayscale version is $81.5125, -4.3493, 4.4287$.

A 20% lighter version of the original color is $100.0000, -5.3358, 5.4332$, and $57.8375, 4.9075, 3.0258$ is the 20% darker color. If you saturate the color by 10%, you get $73.5148, 14.0733, 4.4665$, and if you desaturate by 10%, it is $88.1501, -4.2959, 4.7864$.

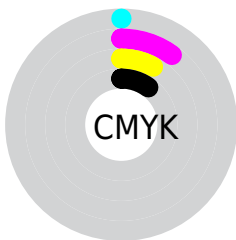
Distribution



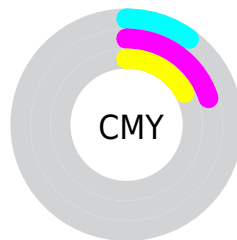
- Red (90%)
- Green (80%)
- Blue (83%)



- Red (90%)
- Yellow (80%)
- Blue (83%)



- Cyan (0%)
- Magenta (10%)
- Yellow (8%)
- Black (10%)



- Cyan (10%)
- Magenta (20%)
- Yellow (17%)

Brightness & Saturation Gradients

These gradients show how the HunterLab color 80.6373, 4.7669, 4.4587 changes by changing the brightness by 10 percent. The first figure shows a shift by +10% for each color and the second figure -10%.

Similar to the brightness gradients but the following saturation gradients show a change of the HunterLab color 80.6373, 4.7669, 4.4587 by changing the saturation by 10% instead.

80.6373, 4.7669,
4.4587

80.6373, 4.7669,
4.4587

210.4489, 1.1232,
11.5526

68.9077, 4.9485,
3.8179

105.8717, 4.2433,
5.8403

57.8078, 5.0748,
3.2099

119.3208, 3.9134,
6.5755

47.3776, 5.1371,
2.6381

133.2955, 3.5413,
7.3392

37.6633, 5.1272,
2.1049

147.7769, 3.1294,
8.1304

28.7222, 5.0341,
1.6135

162.7478, 2.6799,
8.9481

20.6279, 4.8421,
1.1677

178.1927, 2.1946,

13.4806, 4.5277,

9.7916

0.7727

194.0973, 1.6752,
10.6600

7.0562, 5.4097,
0.4302

0.0000, NaN, NaN

80.6373, 4.7669,
4.4587

80.6373, 4.7669,
4.4587

73.5148, 14.0733,
4.4665

88.1501, -4.2959,
4.7864

66.8471, 23.6006,
4.8753

95.9924, -13.1150,
5.3872

60.7223, 33.2477,
5.7634

97.6720, -13.5316,
2.5182

55.2456, 42.7977,
7.2039

■ 50.5366, 51.8596,
9.2415

■ 46.7184, 59.8403,
11.8533

■ 43.8903, 66.0168,
14.9047

■ 42.0872, 69.7783,
18.1333

■ 41.1774, 71.2404,
21.0049

Harmonies

Analogous

The Analogous color harmony consists of three colors that are next to each other on the color wheel.



80.6391, 3.5653, 0.1159



80.6373, 4.7669, 4.4587



80.6391, 3.4881, 8.5570

Triad

The Triadic color harmony groups three colors that are evenly spaced from another and form a triangle on the color wheel.



80.6391, 4.7647, 4.4601



80.6391, -8.7613, 11.3342



80.6391, -8.6353, -3.3114

Complementary

The Complementary color scheme is a pair of colors which are on the opposite of each other on the color wheel.



80.6373, 4.7669, 4.4587



86.2247, -13.1899, 4.8937

Split Complementary

Split-complementary colors differ from the complementary color scheme. The scheme consists of three colors, the original color and two neighbors of the complement color.



80.6391, -11.8169, -0.0132



80.6373, 4.7669, 4.4587



80.6391, -11.8884, 8.4411

Square

The Square scheme is like the rectangle color scheme, but the four colors are evenly spaced on the color wheel.



80.6391, 4.7647, 4.4601



80.6391, -4.3813, 12.3865



80.6391, -12.9946, 4.3187



80.6391, -4.2327, -4.5212

Rectangle

The Rectangle color scheme consists of four colors that form a rectangle on the color wheel.



80.6373, 4.7669, 4.4587



80.6391, 1.4210, 10.6365



80.6391, -12.9946, 4.3187



80.6391, -9.8795, -2.4013

Sweetspot

The Sweet Spot groups the original color and five complimentary colors.



80.6391, 4.7647, 4.4601



97.3918, -2.2804, 5.2819



80.6292, 5.9146, -4.7235



44.7382, -0.6753, 2.4272

0.0000, NaN, NaN



46.2646, -2.4686, 2.5136

Same Dimension

The Same Dimension uses a secret algorithm to generate beautiful new colors.



80.6391, 4.7647, 4.4601



88.9627, 8.0888, 5.0014



82.2538, 0.6479, 9.0606



37.9826, 1.7862, 2.0903



31.1619, 53.9640, 15.4988



8.5569, 14.9859, 2.9564

Inverse Universe

The Inverse Universe completely reimagines the original color for something new.



80.6391, 4.7647, 4.4601



88.9627, 8.0888, 5.0014



84.5065, -9.0906, -0.0960



37.9826, 1.7862, 2.0903



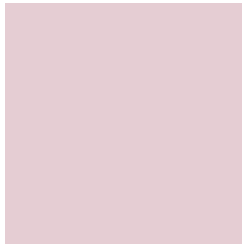
31.1619, 53.9640, 15.4988



8.5569, 14.9859, 2.9564

Previews

White Background



This preview shows how the HunterLab color 80.6373, 4.7669, 4.4587 looks on a white background.

Color Contrast Check

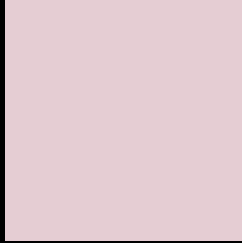
Large Text (above 18pt) WCAG AA × Fail

Any Text WCAG AA × Fail

Large Text (above 18pt) WCAG AAA × Fail

Any Text WCAG AAA × Fail

Black Background



This preview shows how the HunterLab color 80.6373, 4.7669, 4.4587 looks on a black background.

Color Contrast Check

Large Text (above 18pt) WCAG AA ✓ Pass

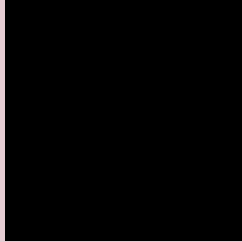
Any Text WCAG AA ✓ Pass

Large Text (above 18pt) WCAG AAA ✓ Pass

Any Text WCAG AAA ✓ Pass

If you want to check with other color combinations, try the [Color Contrast Checker](#).

HunterLab 80.6373, 4.7669, 4.4587 Background



This preview shows how black text looks on a background with the HunterLab color 80.6373, 4.7669, 4.4587.



This preview shows how white text looks on a background with the HunterLab color 80.6373, 4.7669,

4.4587.

Color Blindness Simulation

Color vision deficiency is a very complex topic, and I could not describe the different causes any better than Wikipedia does, so if you want to learn more, you should check out their [article about color blindness](#).

Dichromacy



Original Color

80.6373, 4.7669, 4.4587

Protanopia

80.7740, -2.3189, 3.0346

Deuteranopia

80.5468, 5.9836, 4.3733



Tritanopia

80.7317, 7.1774, 0.1452

Trichromacy



Original Color

80.6373, 4.7669, 4.4587

Protanomaly

80.6076, 0.1720, 3.3703

Deuteranomaly

80.4437, 5.6380, 4.2456

Tritanomaly

80.6340, 6.6561, 1.5338

Monochromacy



Original Color

80.6373, 4.7669, 4.4587

Achromatopsia

81.5713, -4.3524, 4.4319

Achromatomaly

81.1830, -1.0351, 4.5164

CSS Examples

Text

The CSS property to change the color of the text to HunterLab 80.6373, 4.7669, 4.4587 is called "color". The color property can be set on classes, ids or directly on the HTML element.

This example shows how text in the color `rgb(229, 205, 211)` looks like.

```
.text, #text, p{  
    color:rgb(229, 205, 211)  
}
```

If you want to add a text shadow in that color use the text-shadow property, you can generate a text shadow directly with our [CSS Text Shadow Generator](#).

Here you see how black text with a 4 pixel rgb(229, 205, 211) colored shadow looks like.

```
.shadow{ text-shadow: 4px 4px 2px rgb(229, 205, 211) }
```

Border

The CSS property to change the border of an element to HunterLab 80.6373, 4.7669, 4.4587 is called "border".

The border property can be set on classes, ids or directly on the HTML element.

This example shows the color as border, it can be applied via the CSS property "border" or "border-color".

```
.border, #border, table{ border:4px solid rgb(229, 205, 211) }
```


If only the border color should be changed use the property `border-color`.

```
.border{ border-color:rgb(229, 205, 211) }
```

If you want to add a box shadow in that color use:

Here you see how a box with a 4 pixel `rgb(229, 205, 211)` colored shadow looks like.

```
.boxshadow{ -moz-box-shadow:4px 4px 4px  
4px rgb(229, 205, 211); -webkit-box-  
shadow:4px 4px 4px 4px rgb(229, 205, 211);  
box-shadow:4px 4px 4px 4px rgb(229, 205,  
211) }
```

Background

The CSS property to change the background color of an element to HunterLab 80.6373, 4.7669, 4.4587 is called "background". The background property can be set on classes, ids or directly on the HTML element.

```
.background, #background, body{  
background: rgb(229, 205, 211) }
```

If only the background color should be changed can be used:

```
.background{ background-color: rgb(229,  
205, 211) }
```

This example shows the color as background, it is applied via the CSS property "background".

To optimize and compress your CSS code, you can use our [online CSS compressor and optimizer](#) based on csstidy. If you want to create a linear or radial gradient as background or border, check our [CSS Gradient Generator](#).

Hey! You found this booklet interesting? Support Converting Colors with the new Membership Option!

The pro membership hides all ads, plus gives you double the colors in the color bucket, and more awesome pro features!

[Learn more, Memberships starting at \\$2.50/m!](#)

**Follow me
on Twitter!**

@ConvertingColor