

Converting Colors

HunterLab(80.6658, 1.1884,
10.7283)

Have a look what the booklet for
HunterLab(80.6658, 1.1884,
10.7283) contains.

HunterLab(80.7161, 1.1331, 10.9553)	3
<i>Conversions</i>	4
<i>Details</i>	6
<i>Harmonies</i>	12
<i>Previews</i>	24
<i>Color Blindness Simulation</i>	28
<i>CSS Examples</i>	31

Color

**HunterLab(80.7161, 1.1331,
10.9553)**

Conversions

Conversions Part 1

Format	Color
Hex	E4CFC5
RGB	228, 207, 197
RGB Percent	89%, 81%, 77%
CMY	0.1059, 0.1882, 0.2274
CMYK	0.00, 0.09, 0.14, 0.11
HSL	19°, 36%, 83%
HSV	19°, 14%, 89%
XYZ	64.3858, 65.1509, 62.0053
YIQ	212.1390, 15.7260, 1.3420

Conversions

Conversions Part 2

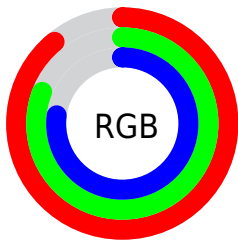
Format	Color
R _Y B	228, 212, 197
Decimal	14995397
CIE Lab	84.56, 5.67, 7.61
CIE LCh	85, 9.487, 53.317
Yxy	65.1538, 0.3361, 0.3401
Android (android.graphics.Color)	4293185477 (0xFFE4CFC5)
YUV	212.1390, -7.4635, 13.9101
Hunter-Lab	80.7161, 1.1331, 10.9553

Details

The HunterLab color $80.7161, 1.1331, 10.9553$ is a light color, and the websafe version is hex `CCCCCC`. A complement of this color would be $82.2272, -9.0887, -2.4157$, and the grayscale version is $81.2281, -4.3341, 4.4133$.

A 20% lighter version of the original color is $99.9679, -5.5118, 5.8916$, and $57.9105, 1.4909, 9.1047$ is the 20% darker color. If you saturate the color by 10%, you get $75.5419, 5.8171, 15.1402$, and if you desaturate by 10%, it is $86.0997, -3.2145, 6.4662$.

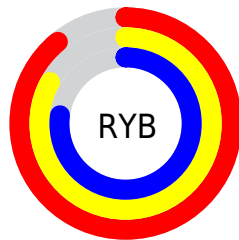
Distribution



Red (89%)

Green (81%)

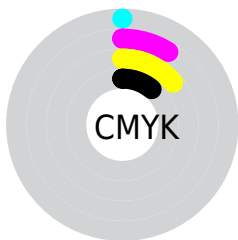
Blue (77%)



Red (89%)

Yellow (83%)

Blue (77%)

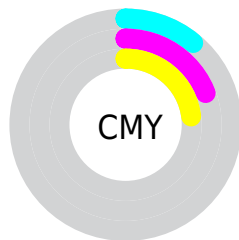


Cyan (0%)

Magenta (9%)

Yellow (14%)

Black (11%)



Cyan (11%)

Magenta (19%)

Yellow (23%)

Brightness & Saturation Gradients

These gradients show how the HunterLab color 80.7161, 1.1331, 10.9553 changes by changing the brightness by 10 percent. The first figure shows a shift by +10% for each color and the second figure -10%.

Similar to the brightness gradients but the following saturation gradients show a change of the HunterLab color 80.7161, 1.1331, 10.9553 by changing the saturation by 10% instead.

80.7161, 1.1331,
10.9553

80.7161, 1.1331,
10.9553

210.5574, -3.8008,
20.6868

68.9825, 1.4873,
9.9523

105.9580, 0.2864,
13.0067

57.8783, 1.7953,
8.9599

119.4106, -0.1956,
14.0546

47.4436, 2.0498,
7.9766

133.3887, -0.7144,
15.1185

37.7245, 2.2447,
6.9982

147.8734, -1.2680,
16.1988

28.7780, 2.3716,
6.0183

162.8474, -1.8549,
17.2957

20.6779, 2.4188,
5.0253

178.2953, -2.4734,

13.5240, 2.3681,

18.4093

3.9980

194.2030, -3.1225,
19.5396

■ 7.1073, 3.0950,
4.8240

0.0000, NaN, NaN

■ 80.7161, 1.1331,
10.9553

■ 80.7161, 1.1331,
10.9553

■ 75.5419, 5.8171,
15.1402

■ 86.0997, -3.2145,
6.4662

■ 70.5974, 10.8730,
18.9595

■ 91.6657, -7.2503,
1.7154

■ 65.9138, 16.3179,
22.3444

■ 97.0435, -12.9723,
1.7688

■ 61.5256, 22.1547,
25.2116

■ 97.5880, -13.8311,
2.4118

■ 57.4713, 28.3572,
27.4671

■ 53.7931, 34.8544,
29.0146

■ 50.5342, 41.5130,
29.7732

■ 47.7347, 48.1212,
29.7133

■ 46.1907, 52.1641,
29.3757

Harmonies

Analogous

The Analogous color harmony consists of three colors that are next to each other on the color wheel.



80.7179, 4.1131, 7.7065



80.7161, 1.1331, 10.9553



80.7179, -3.2622, 12.4357

Triad

The Triadic color harmony groups three colors that are evenly spaced from another and form a triangle on the color wheel.



80.7179, 1.1308, 10.9565



80.7179, -13.0490, 5.3828



80.7179, -0.7213, -3.8625

Complementary

The Complementary color scheme is a pair of colors which are on the opposite of each other on the color wheel.



80.7161, 1.1331, 10.9553



82.2272, -9.0887, -2.4157

Split Complementary

Split-complementary colors differ from the complementary color scheme. The scheme consists of three colors, the original color and two neighbors of the complement color.



80.7179, -5.3550, -4.5716



80.7161, 1.1331, 10.9553



80.7179, -12.4036, 0.9342

Square

The Square scheme is like the rectangle color scheme, but the four colors are evenly spaced on the color wheel.



80.7179, 1.1308, 10.9565



80.7179, -11.3962, 9.3382



80.7179, -9.6128, -2.7711



80.7179, 3.0269, -0.8849

Rectangle

The Rectangle color scheme consists of four colors that form a rectangle on the color wheel.



80.7161, 1.1331, 10.9553



80.7179, -6.3719, 12.2818



80.7179, -9.6128, -2.7711



80.7179, -2.2297, -4.3808

Sweetspot

The Sweet Spot groups the original color and five complimentary colors.



80.7179, 1.1308, 10.9565



97.4841, -3.4455, 7.5660



78.4213, 9.8961, -1.7478



44.8835, -1.4267, 3.6835

0.0000, NaN, NaN



46.2646, -2.4686, 2.5136

Same Dimension

The Same Dimension uses a secret algorithm to generate beautiful new colors.



80.7179, 1.1308, 10.9565



90.1467, 2.5776, 13.6629



85.4031, -6.7460, 15.8343



38.8890, -0.3313, 4.2834



35.3704, 38.8733, 22.4756



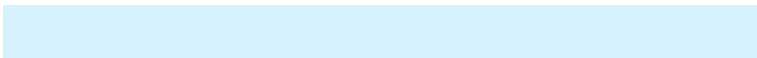
10.4313, 8.3953, 6.5747

Inverse Universe

The Inverse Universe completely reimagines the original color for something new.



82.2272, -9.0887, -2.4157



92.1690, -11.1223, -4.2594



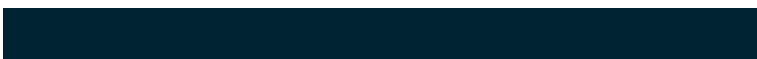
77.4824, -1.2586, -8.4434



39.3840, -3.6805, -0.1004



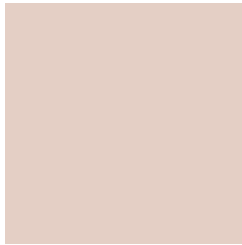
41.0898, -7.1324, -35.9619



11.8923, -3.0225, -8.3396

Previews

White Background



This preview shows how the HunterLab color 80.7161, 1.1331, 10.9553 looks on a white background.

Color Contrast Check

Large Text (above 18pt) WCAG AA × Fail

Any Text WCAG AA × Fail

Large Text (above 18pt) WCAG AAA × Fail

Any Text WCAG AAA × Fail

Black Background



This preview shows how the HunterLab color 80.7161, 1.1331, 10.9553 looks on a black background.

Color Contrast Check

Large Text (above 18pt) WCAG AA ✓ Pass

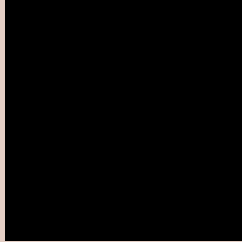
Any Text WCAG AA ✓ Pass

Large Text (above 18pt) WCAG AAA ✓ Pass

Any Text WCAG AAA ✓ Pass

If you want to check with other color combinations, try the [Color Contrast Checker](#).

HunterLab 80.7161, 1.1331, 10.9553 Background



This preview shows how black text looks on a background with the HunterLab color 80.7161, 1.1331, 10.9553.



This preview shows how white text looks on a background with the HunterLab color 80.7161, 1.1331,

Color Blindness Simulation

Color vision deficiency is a very complex topic, and I could not describe the different causes any better than Wikipedia does, so if you want to learn more, you should check out their [article about color blindness](#).

Dichromacy



Original Color

80.7161, 1.1331, 10.9553

Protanopia

80.6983, -3.4869, 9.9663

Deuteranopia

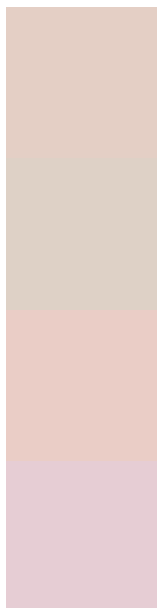
80.7883, 6.0169, 10.6776



Tritanopia

80.8344, 7.5198, 0.2777

Trichromacy



Original Color

80.7161, 1.1331, 10.9553

Protanomaly

80.7513, -1.7937, 10.5002

Deuteranomaly

80.7665, 4.4264, 10.6258

Tritanomaly

80.7707, 5.2778, 4.1407

Monochromacy



Original Color

80.7161, 1.1331, 10.9553

Achromatopsia

81.1403, -4.3294, 4.4085

Achromatomaly

80.9343, -2.1982, 6.5882

CSS Examples

Text

The CSS property to change the color of the text to HunterLab 80.7161, 1.1331, 10.9553 is called "color". The color property can be set on classes, ids or directly on the HTML element.

This example shows how text in the color `rgb(228, 207, 197)` looks like.

```
.text, #text, p{  
    color:rgb(228, 207, 197)  
}
```

If you want to add a text shadow in that color use the text-shadow property, you can generate a text shadow directly with our [CSS Text Shadow Generator](#).

Here you see how black text with a 4 pixel rgb(228, 207, 197) colored shadow looks like.

```
.shadow{ text-shadow: 4px 4px 2px rgb(228, 207, 197) }
```

Border

The CSS property to change the border of an element to HunterLab 80.7161, 1.1331, 10.9553 is called "border". The border property can be set on classes, ids or directly on the HTML element.

This example shows the color as border, it can be applied via the CSS property "border" or "border-color".

```
.border, #border, table{ border:4px solid rgb(228, 207, 197) }
```


If only the border color should be changed use the property `border-color`.

```
.border{ border-color:rgb(228, 207, 197) }
```

If you want to add a box shadow in that color use:

Here you see how a box with a 4 pixel `rgb(228, 207, 197)` colored shadow looks like.

```
.boxshadow{ -moz-box-shadow:4px 4px 4px 4px rgb(228, 207, 197); -webkit-box-shadow:4px 4px 4px 4px rgb(228, 207, 197); box-shadow:4px 4px 4px 4px rgb(228, 207, 197) }
```

Background

The CSS property to change the background color of an element to HunterLab 80.7161, 1.1331, 10.9553 is called "background". The background property can be set on classes, ids or directly on the HTML element.

```
.background, #background, body{  
background: rgb(228, 207, 197) }
```

If only the background color should be changed can be used:

```
.background{ background-color: rgb(228,  
207, 197) }
```

This example shows the color as background, it is applied via the CSS property "background".

To optimize and compress your CSS code, you can use our [online CSS compressor and optimizer](#) based on csstidy. If you want to create a linear or radial gradient as background or border, check our [CSS Gradient Generator](#).

Hey! You found this booklet interesting? Support Converting Colors with the new Membership Option!

The pro membership hides all ads, plus gives you double the colors in the color bucket, and more awesome pro features!

[Learn more, Memberships starting at \\$2.50/m!](#)

**Follow me
on Twitter!**

@ConvertingColor