

Converting Colors

HunterLab(80.6669, 42.3983,
34.1735)

Have a look what the booklet for
HunterLab(80.6669, 42.3983,
34.1735) contains.

HunterLab(73.2212, 20.0912, 27.5019)	3
<i>Conversions</i>	4
<i>Details</i>	6
<i>Harmonies</i>	12
<i>Previews</i>	24
<i>Color Blindness Simulation</i>	28
<i>CSS Examples</i>	31

Color

**HunterLab(73.2212, 20.0912,
27.5019)**

Conversions

Conversions Part 1

Format	Color
Hex	FFAF85
RGB	255, 175, 133
RGB Percent	100%, 69%, 52%
CMY	0.0000, 0.3137, 0.4784
CMYK	0.00, 0.31, 0.48, 0.00
HSL	21°, 100%, 76%
HSV	21°, 48%, 100%
XYZ	60.8037, 53.6134, 29.3341
YIQ	194.1320, 61.1620, 3.8980

Conversions

Conversions Part 2

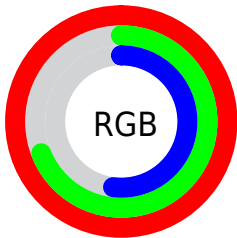
Format	Color
R_{YB}	255, 197, 133
Decimal	16756613
CIE Lab	78.24, 24.63, 33.30
CIE LCh	78, 41.424, 53.513
Yxy	53.6161, 0.4230, 0.3730
Android (android.graphics.Color)	4294946693 (0xFFFFAF85)
YUV	194.1320, -30.1381, 53.3812
Hunter-Lab	73.2212, 20.0912, 27.5019

Details

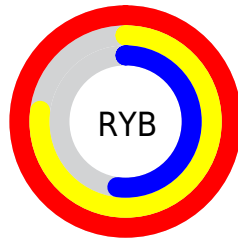
The HunterLab color **73.2212, 20.0912, 27.5019** is a light color, and the websafe version is hex **FF9966**. A complement of this color would be **77.3256, -16.3992, -25.1804**, and the grayscale version is **73.6121, -3.9278, 3.9995**.

A 20% lighter version of the original color is **90.5537, -3.1663, 24.9611**, and **51.1329, 18.8282, 22.3483** is the 20% darker color. If you saturate the color by 10%, you get **68.4717, 26.6729, 30.4940**, and if you desaturate by 10%, it is **78.3105, 13.9535, 23.8361**.

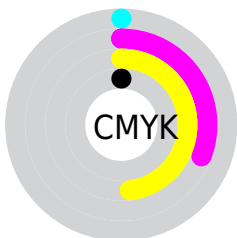
Distribution



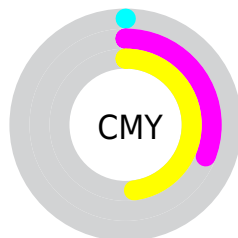
- Red (100%)
- Green (69%)
- Blue (52%)



- Red (100%)
- Yellow (77%)
- Blue (52%)



- Cyan (0%)
- Magenta (31%)
- Yellow (48%)
- Black (0%)




- Cyan (0%)
- Magenta (31%)
- Yellow (48%)

Brightness & Saturation Gradients


These gradients show how the HunterLab color 73.2212, 20.0912, 27.5019 changes by changing the brightness by 10 percent. The first figure shows a shift by +10% for each color and the second figure -10%.


Similar to the brightness gradients but the following saturation gradients show a change of the HunterLab color 73.2212, 20.0912, 27.5019 by changing the saturation by 10% instead.


 73.2212, 20.0912,
27.5019


 73.2212, 20.0912,
27.5019

200.1610, 21.8999,
47.4272


 61.8828, 19.5447,
25.0309


 97.7294, 20.9290,
32.2177

 51.1972, 18.9085,
22.4560


 110.8386, 21.2414,
34.4890

 41.2092, 18.1675,
19.7493


 124.4867, 21.4893,
36.7167

 31.9713, 17.3079,
16.8712

138.6531, 21.6771,
38.9086

 23.5503, 16.3131,
13.7673

153.3195, 21.8089,
41.0708

 16.0348, 15.1662,
11.2243

168.4693, 21.8880,

 9.5508, 13.8663,

43.2087

6.6856

184.0877, 21.9174,
45.3262

0.0000, INF, NaN

0.0000, NaN, NaN

73.2212, 20.0912,
27.5019

73.2212, 20.0912,
27.5019

68.4717, 26.6729,
30.4940

78.3105, 13.9535,
23.8361

64.0987, 33.6699,
32.7027

83.6963, 8.2741,
19.5936

60.1488, 40.9855,
34.0292

89.3472, 3.0314,
14.8630

56.6663, 48.4538,
34.4093


95.2341, -1.8048,
9.7180

53.6879, 55.8140,

100.0000, -5.3358,

33.8848

5.4332

 53.1097, 57.3374,
33.7297

Harmonies

Analogous

The Analogous color harmony consists of three colors that are next to each other on the color wheel.



73.2230, 34.3009, 16.9928



73.2212, 20.0912, 27.5019



73.2230, 0.4324, 31.5776

Triad

The Triadic color harmony groups three colors that are evenly spaced from another and form a triangle on the color wheel.



73.2230, 20.0876, 27.5029



73.2230, -37.9774, 7.9537



73.2230, 11.8778, -37.5219

Complementary

The Complementary color scheme is a pair of colors which are on the opposite of each other on the color wheel.



73.2212, 20.0912, 27.5019



77.3256, -16.3992, -25.1804

Split Complementary

Split-complementary colors differ from the complementary color scheme. The scheme consists of three colors, the original color and two neighbors of the complement color.



73.2230, -8.1553, -41.8065



73.2212, 20.0912, 27.5019



73.2230, -35.6047, -11.9558

Square

The Square scheme is like the rectangle color scheme, but the four colors are evenly spaced on the color wheel.



73.2230, 20.0876, 27.5029



73.2230, -32.0315, 22.3902



73.2230, -25.1684, -31.4484



73.2230, 29.2206, -20.9374

Rectangle

The Rectangle color scheme consists of four colors that form a rectangle on the color wheel.



73.2212, 20.0912, 27.5019



73.2230, -12.5822, 31.1455



73.2230, -25.1684, -31.4484



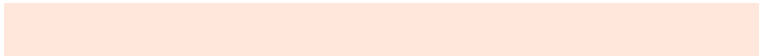
73.2230, 5.1836, -40.6030

Sweetspot

The Sweet Spot groups the original color and five complimentary colors.



73.2230, 20.0876, 27.5029



91.5827, 1.1269, 12.9316



65.5039, 53.7966, -16.4808



41.7877, 1.0128, 6.4879

0.0000, NaN, NaN



46.2646, -2.4686, 2.5136

Same Dimension

The Same Dimension uses a secret algorithm to generate beautiful new colors.



73.2230, 20.0876, 27.5029



68.8580, 26.1015, 30.2708



90.6529, -10.7932, 41.1573



43.6000, -0.4754, 4.9037



38.7139, 40.5490, 24.5652



12.8589, 10.5912, 8.1090

Inverse Universe

The Inverse Universe completely reimagines the original color for something new.



77.3256, -16.3992, -25.1804



73.5891, -16.5775, -31.1695



59.2443, 14.3372, -57.9234



44.0074, -4.0129, -0.2353



43.0599, -5.6460, -41.6330



14.1743, -2.9029, -11.4501

Previews

White Background



This preview shows how the HunterLab color 73.2212, 20.0912, 27.5019 looks on a white background.

Color Contrast Check

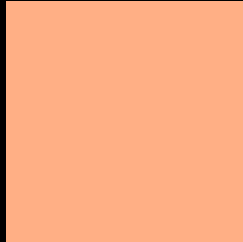
Large Text (above 18pt) WCAG AA × Fail

Any Text WCAG AA × Fail

Large Text (above 18pt) WCAG AAA × Fail

Any Text WCAG AAA × Fail

Black Background



This preview shows how the HunterLab color 73.2212, 20.0912, 27.5019 looks on a black background.

Color Contrast Check

Large Text (above 18pt) WCAG AA ✓ Pass

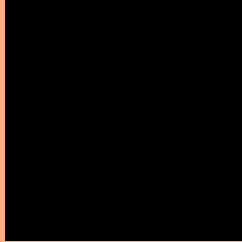
Any Text WCAG AA ✓ Pass

Large Text (above 18pt) WCAG AAA ✓ Pass

Any Text WCAG AAA ✓ Pass

If you want to check with other color combinations, try the [Color Contrast Checker](#).

HunterLab 73.2212, 20.0912, 27.5019 Background



This preview shows how black text looks on a background with the HunterLab color 73.2212, 20.0912, 27.5019.



This preview shows how white text looks on a background with the HunterLab color 73.2212, 20.0912,

Color Blindness Simulation

Color vision deficiency is a very complex topic, and I could not describe the different causes any better than Wikipedia does, so if you want to learn more, you should check out their [article about color blindness](#).

Dichromacy



Original Color

73.2212, 20.0912, 27.5019

Protanopia

73.4279, -6.6789, 24.7816

Deuteranopia

73.1385, 5.5666, 27.7581



Tritanopia

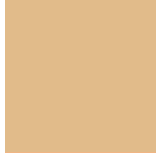
73.3234, 28.0868, 9.8875

Trichromacy



Original Color

73.2212, 20.0912, 27.5019



Protanomaly

73.0638, 2.6206, 25.5555



Deuteranomaly

72.9650, 10.8347, 27.4119



Tritanomaly

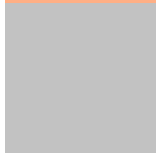
73.1063, 25.1390, 17.0036

Monochromacy



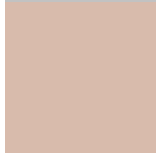
Original Color

73.2212, 20.0912, 27.5019



Achromatopsia

73.4493, -3.9191, 3.9906



Achromatomaly

72.8822, 3.5734, 13.2214

CSS Examples

Text

The CSS property to change the color of the text to HunterLab 73.2212, 20.0912, 27.5019 is called "color". The color property can be set on classes, ids or directly on the HTML element.

This example shows how text in the color `rgb(255, 175, 133)` looks like.

```
.text, #text, p{  
    color:rgb(255, 175, 133)  
}
```

If you want to add a text shadow in that color use the text-shadow property, you can generate a text shadow directly with our [CSS Text Shadow Generator](#).

Here you see how black text with a 4 pixel rgb(255, 175, 133) colored shadow looks like.

```
.shadow{ text-shadow: 4px 4px 2px rgb(255, 175, 133) }
```

Border

The CSS property to change the border of an element to HunterLab 73.2212, 20.0912, 27.5019 is called "border". The border property can be set on classes, ids or directly on the HTML element.

This example shows the color as border, it can be applied via the CSS property "border" or "border-color".

```
.border, #border, table{ border:4px solid rgb(255, 175, 133) }
```


If only the border color should be changed use the property `border-color`.

```
.border{ border-color:rgb(255, 175, 133) }
```

If you want to add a box shadow in that color use:

Here you see how a box with a 4 pixel `rgb(255, 175, 133)` colored shadow looks like.

```
.boxshadow{ -moz-box-shadow:4px 4px 4px  
4px rgb(255, 175, 133); -webkit-box-  
shadow:4px 4px 4px 4px rgb(255, 175, 133);  
box-shadow:4px 4px 4px 4px rgb(255, 175,  
133) }
```

Background

The CSS property to change the background color of an element to HunterLab 73.2212, 20.0912, 27.5019 is called "background". The background property can be set on classes, ids or directly on the HTML element.

```
.background, #background, body{  
background: rgb(255, 175, 133) }
```

If only the background color should be changed can be used:

```
.background{ background-color: rgb(255,  
175, 133) }
```

This example shows the color as background, it is applied via the CSS property "background".

To optimize and compress your CSS code, you can use our [online CSS compressor and optimizer](#) based on csstidy. If you want to create a linear or radial gradient as background or border, check our [CSS Gradient Generator](#).

Hey! You found this booklet interesting? Support Converting Colors with the new Membership Option!

The pro membership hides all ads, plus gives you double the colors in the color bucket, and more awesome pro features!

[Learn more, Memberships starting at \\$2.50/m!](#)

**Follow me
on Twitter!**

@ConvertingColor