

# Converting Colors

HunterLab(80.8829, 3.2619,  
4.7318)

Have a look what the booklet for  
HunterLab(80.8829, 3.2619, 4.7318)  
contains.

<b>HunterLab(81.0307, 3.0334, 4.8907)</b> .....	3
<b><i>Conversions</i></b> .....	4
<b><i>Details</i></b> .....	6
<b><i>Harmonies</i></b> .....	12
<b><i>Previews</i></b> .....	24
<b><i>Color Blindness Simulation</i></b> .....	28
<b><i>CSS Examples</i></b> .....	31

# Color

**HunterLab(81.0307, 3.0334,  
4.8907)**

# Conversions

## Conversions Part 1

Format	Color
Hex	E3CFD3
RGB	227, 207, 211
RGB Percent	89%, 81%, 83%
CMY	0.1098, 0.1882, 0.1725
CMYK	0.00, 0.09, 0.07, 0.11
HSL	348°, 26%, 85%
HSV	348°, 9%, 89%
XYZ	65.7493, 65.6597, 70.8363
YIQ	213.4360, 10.6360, 5.4840

# Conversions

## Conversions Part 2

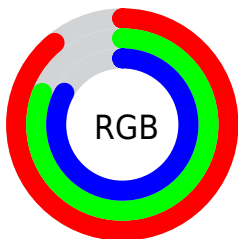
Format	Color
R <sub>Y</sub> B	227, 207, 211
Decimal	14929875
CIE Lab	84.82, 7.62, 0.53
CIE LCh	85, 7.639, 4.014
Yxy	65.6626, 0.3251, 0.3247
Android (android.graphics.Color)	4293119955 (0xFFE3CFD3)
YUV	213.4360, -1.2009, 11.8956
Hunter-Lab	81.0307, 3.0334, 4.8907

# Details

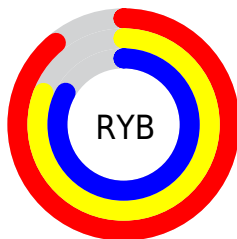
The HunterLab color  $81.0307, 3.0334, 4.8907$  is a light color, and the websafe version is hex `CCCCCC`. A complement of this color would be  $85.7514, -11.5907, 4.3649$ , and the grayscale version is  $81.7627, -4.3627, 4.4423$ .

A 20% lighter version of the original color is  $100.0000, -5.3358, 5.4332$ , and  $58.2988, 3.5801, 3.5454$  is the 20% darker color. If you saturate the color by 10%, you get  $73.8797, 12.0289, 5.3221$ , and if you desaturate by 10%, it is  $88.5592, -5.7036, 4.7601$ .

# Distribution



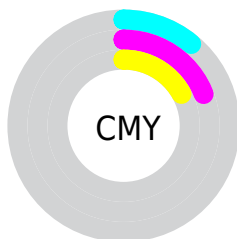
- Red (89%)
- Green (81%)
- Blue (83%)



- Red (89%)
- Yellow (81%)
- Blue (83%)



- Cyan (0%)
- Magenta (9%)
- Yellow (7%)
- Black (11%)



- Cyan (11%)
- Magenta (19%)
- Yellow (17%)

# Brightness & Saturation Gradients

These gradients show how the HunterLab color 81.0307, 3.0334, 4.8907 changes by changing the brightness by 10 percent. The first figure shows a shift by +10% for each color and the second figure -10%.

Similar to the brightness gradients but the following saturation gradients show a change of the HunterLab color 81.0307, 3.0334, 4.8907 by changing the saturation by 10% instead.



81.0307, 3.0334,  
4.8907

81.0307, 3.0334,  
4.8907

210.9904, -1.2279,  
12.1478

69.2810, 3.2978,  
4.2277

106.3024, 2.3552,  
6.3134

58.1599, 3.5111,  
3.5963

119.7690, 1.9524,  
7.0679

47.7072, 3.6655,  
2.9996

133.7606, 1.5101,  
7.8502

37.9687, 3.7538,  
2.4398

148.2582, 1.0303,  
8.6593

29.0012, 3.7661,  
1.9193

163.2448, 0.5151,  
9.4943

20.8779, 3.6887,  
1.4413

178.7049, -0.0340,

13.6977, 3.5007,

10.3546

1.0098

194.6244, -0.6154,  
11.2393

■ 7.3079, 4.1533,  
0.7011

0.0000, NaN, NaN

■ 81.0307, 3.0334,  
4.8907

■ 81.0307, 3.0334,  
4.8907

■ 73.8797, 12.0289,  
5.3221

■ 88.5592, -5.7036,  
4.7601

■ 67.1679, 21.2738,  
6.1082

■ 96.4068, -14.1903,  
4.8761

■ 60.9807, 30.6900,  
7.3120

■ 97.5044, -14.1292,  
2.3058

■ 55.4204, 40.0950,  
8.9869

■ 50.6056, 49.1420,  
11.1561

■ 46.6610, 57.2806,  
13.7759

■ 43.6937, 63.8024,  
16.6994

■ 41.7535, 68.0507,  
19.6678

■ 40.7423, 69.9164,  
22.3337

# Harmonies

## Analogous

The Analogous color harmony consists of three colors that are next to each other on the color wheel.



81.0325, 2.2920, 1.3307



81.0307, 3.0334, 4.8907



81.0325, 1.7690, 8.1745

# Triad

The Triadic color harmony groups three colors that are evenly spaced from another and form a triangle on the color wheel.



81.0325, 3.0312, 4.8920



81.0325, -8.3436, 9.9214



81.0325, -7.4800, -2.0363

# Complementary

The Complementary color scheme is a pair of colors which are on the opposite of each other on the color wheel.



81.0307, 3.0334, 4.8907



85.7514, -11.5907, 4.3649

# Split Complementary

Split-complementary colors differ from the complementary color scheme. The scheme consists of three colors, the original color and two neighbors of the complement color.



81.0325, -10.2500, 0.4575



81.0307, 3.0334, 4.8907



81.0325, -10.7422, 7.3746

# Square

The Square scheme is like the rectangle color scheme, but the four colors are evenly spaced on the color wheel.



81.0325, 3.0312, 4.8920



81.0325, -4.8348, 10.9930



81.0325, -11.4337, 3.9266



81.0325, -3.8200, -2.7744



# Rectangle

The Rectangle color scheme consists of four colors that form a rectangle on the color wheel.



81.0307, 3.0334, 4.8907



81.0325, -0.0242, 9.7949



81.0325, -11.4337, 3.9266



81.0325, -8.5439, -1.3701

# Sweetspot

The Sweet Spot groups the original color and five complimentary colors.



81.0325, 3.0312, 4.8920



97.3796, -2.3473, 5.4570



81.1559, 4.4874, -3.0070



44.7310, -0.7143, 2.5297

0.0000, NaN, NaN



46.2646, -2.4686, 2.5136



# Same Dimension

The Same Dimension uses a secret algorithm to generate beautiful new colors.



81.0325, 3.0312, 4.8920



90.5697, 5.7544, 5.6607



82.7206, -0.7506, 8.6456



37.9669, 1.7017, 2.3144



31.0638, 53.6014, 16.9439



8.5214, 14.8553, 3.4745



# Inverse Universe

The Inverse Universe completely reimagines the original color for something new.



81.0325, 3.0312, 4.8920



90.5697, 5.7544, 5.6607



83.9801, -7.8380, 0.3030



37.9669, 1.7017, 2.3144



31.0638, 53.6014, 16.9439

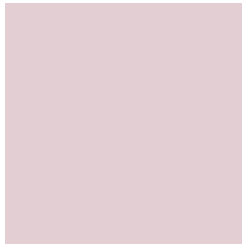


8.5214, 14.8553, 3.4745



# Previews

## White Background



This preview shows how the HunterLab color 81.0307, 3.0334, 4.8907 looks on a white background.

## Color Contrast Check

Large Text (above 18pt) WCAG AA × Fail

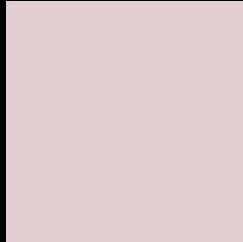
Any Text WCAG AA × Fail

Large Text (above 18pt) WCAG AAA × Fail

Any Text WCAG AAA × Fail



# Black Background



This preview shows how the HunterLab color 81.0307, 3.0334, 4.8907 looks on a black background.

## Color Contrast Check

Large Text (above 18pt) WCAG AA ✓ Pass

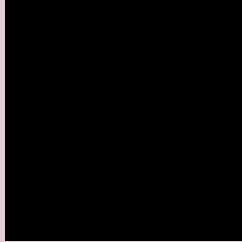
Any Text WCAG AA ✓ Pass

Large Text (above 18pt) WCAG AAA ✓ Pass

Any Text WCAG AAA ✓ Pass

If you want to check with other color combinations, try the [Color Contrast Checker](#).

# HunterLab 81.0307, 3.0334, 4.8907 Background



This preview shows how black text looks on a background with the HunterLab color 81.0307, 3.0334, 4.8907.



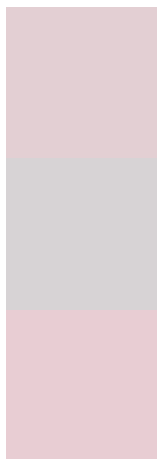
This preview shows how white text looks on a background with the HunterLab color 81.0307, 3.0334,

4.8907.

# Color Blindness Simulation

Color vision deficiency is a very complex topic, and I could not describe the different causes any better than Wikipedia does, so if you want to learn more, you should check out their [article about color blindness](#).

## Dichromacy



### Original Color

81.0307, 3.0334, 4.8907

### Protanopia

81.1417, -2.6836, 3.9542

### Deuteranopia

80.9454, 5.8020, 4.8391



## Tritanopia

80.8561, 6.1420, -0.2304

# Trichromacy



## Original Color

81.0307, 3.0334, 4.8907

## Protanomaly

81.1830, -1.0351, 4.5164

## Deuteranomaly

81.0363, 4.5842, 4.9244

## Tritanomaly

81.0224, 4.9161, 1.9740

# Monochromacy



## Original Color

81.0307, 3.0334, 4.8907

## Achromatopsia

81.5713, -4.3524, 4.4319

## Achromatomaly

81.3925, -1.8796, 4.7479

# CSS Examples

## Text

The CSS property to change the color of the text to HunterLab 81.0307, 3.0334, 4.8907 is called "color". The color property can be set on classes, ids or directly on the HTML element.

This example shows how text in the color `rgb(227, 207, 211)` looks like.

```
.text, #text, p{  
    color:rgb(227, 207, 211)  
}
```

If you want to add a text shadow in that color use the text-shadow property, you can generate a text shadow directly with our [CSS Text Shadow Generator](#).

Here you see how black text with a 4 pixel rgb(227, 207, 211) colored shadow looks like.

```
.shadow{ text-shadow: 4px 4px 2px rgb(227, 207, 211) }
```

## Border

The CSS property to change the border of an element to HunterLab 81.0307, 3.0334, 4.8907 is called "border". The border property can be set on classes, ids or directly on the HTML element.

This example shows the color as border, it can be applied via the CSS property "border" or "border-color".

```
.border, #border, table{ border:4px solid rgb(227, 207, 211) }
```



If only the border color should be changed use the property `border-color`.

```
.border{ border-color:rgb(227, 207, 211) }
```

If you want to add a box shadow in that color use:

Here you see how a box with a 4 pixel `rgb(227, 207, 211)` colored shadow looks like.

```
.boxshadow{ -moz-box-shadow:4px 4px 4px  
4px rgb(227, 207, 211); -webkit-box-  
shadow:4px 4px 4px 4px rgb(227, 207, 211);  
box-shadow:4px 4px 4px 4px rgb(227, 207,  
211) }
```

# Background

The CSS property to change the background color of an element to HunterLab 81.0307, 3.0334, 4.8907 is called "background". The background property can be set on classes, ids or directly on the HTML element.

```
.background, #background, body{  
background: rgb(227, 207, 211) }
```

If only the background color should be changed can be used:

```
.background{ background-color: rgb(227,  
207, 211) }
```

This example shows the color as background, it is applied via the CSS property "background".

To optimize and compress your CSS code, you can use our [online CSS compressor and optimizer](#) based on csstidy. If you want to create a linear or radial gradient as background or border, check our [CSS Gradient Generator](#).

Hey! You found this booklet interesting? Support Converting Colors with the new Membership Option!

The pro membership hides all ads, plus gives you double the colors in the color bucket, and more awesome pro features!

**[Learn more, Memberships starting at \\$2.50/m!](#)**

**Follow me  
on Twitter!**

@ConvertingColor