

Converting Colors

HunterLab(80.9071, 5.7917,
3.8244)

Have a look what the booklet for
HunterLab(80.9071, 5.7917, 3.8244)
contains.

HunterLab(80.9047, 5.7901, 3.8217)	3
<i>Conversions</i>	4
<i>Details</i>	6
<i>Harmonies</i>	12
<i>Previews</i>	24
<i>Color Blindness Simulation</i>	28
<i>CSS Examples</i>	31

Color

**HunterLab(80.9047, 5.7901,
3.8217)**

Conversions

Conversions Part 1

Format	Color
Hex	E7CDD5
RGB	231, 205, 213
RGB Percent	91%, 80%, 84%
CMY	0.0941, 0.1961, 0.1647
CMYK	0.00, 0.11, 0.08, 0.09
HSL	342°, 35%, 85%
HSV	342°, 11%, 91%
XYZ	66.7966, 65.4557, 72.0645
YIQ	213.6860, 12.9280, 8.0000

Conversions

Conversions Part 2

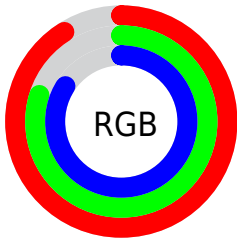
Format	Color
R _Y B	231, 205, 213
Decimal	15191509
CIE Lab	84.72, 10.41, -0.64
CIE LCh	85, 10.426, 356.473
Yxy	65.4586, 0.3269, 0.3204
Android (android.graphics.Color)	4293381589 (0xFFE7CDD5)
YUV	213.6860, -0.3382, 15.1844
Hunter-Lab	80.9047, 5.7901, 3.8217

Details

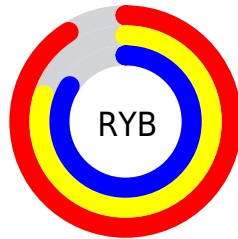
The HunterLab color $80.9047, 5.7901, 3.8217$ is a light color, and the websafe version is hex `CCCCCC`. A complement of this color would be $86.8680, -14.1912, 5.6279$, and the grayscale version is $81.8662, -4.3682, 4.4479$.

A 20% lighter version of the original color is $100.0000, -5.3358, 5.4332$, and $58.0653, 5.7260, 2.8498$ is the 20% darker color. If you saturate the color by 10%, you get $73.7820, 15.4166, 3.2828$, and if you desaturate by 10%, it is $88.4257, -3.6086, 4.7223$.

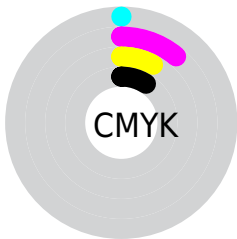
Distribution



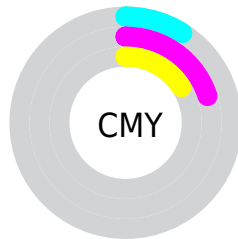
- Red (91%)
- Green (80%)
- Blue (84%)



- Red (91%)
- Yellow (80%)
- Blue (84%)



- Cyan (0%)
- Magenta (11%)
- Yellow (8%)
- Black (9%)



- Cyan (9%)
- Magenta (20%)
- Yellow (16%)

Brightness & Saturation Gradients

These gradients show how the HunterLab color 80.9047, 5.7901, 3.8217 changes by changing the brightness by 10 percent. The first figure shows a shift by +10% for each color and the second figure -10%.

Similar to the brightness gradients but the following saturation gradients show a change of the HunterLab color 80.9047, 5.7901, 3.8217 by changing the saturation by 10% instead.

80.9047, 5.7901,
3.8217

80.9047, 5.7901,
3.8217

210.8170, 2.4954,
10.6774

69.1614, 5.9254,
3.2131

106.1645, 5.3535,
5.1433

58.0471, 6.0030,
2.6392

119.6254, 5.0646,
5.8503

47.6016, 6.0141,
2.1036

133.6117, 4.7321,
6.5870

37.8709, 5.9500,
1.6093

148.1041, 4.3587,
7.3520

28.9118, 5.7990,
1.1600

163.0857, 3.9464,
8.1444

20.7978, 5.5447,
0.7607


178.5409, 3.4973,

13.6281, 5.1630,

8.9634


0.4183


194.4556, 3.0132,
9.8079

 7.2283, 5.8872,
0.0256


0.0000, NaN, NaN


 80.9047, 5.7901,
3.8217


 80.9047, 5.7901,
3.8217


 73.7820, 15.4166,
3.2828

 88.4257, -3.6086,
4.7223

 67.1231, 25.2368,
3.1826

 96.2830, -12.7725,
5.9143

 61.0178, 35.1322,
3.6166

 97.8413, -12.9289,
2.7324

 55.5717, 44.8617,
4.6820

■ 50.9043, 54.0054,
6.4549

■ 47.1361, 61.9449,
8.9476

■ 44.3615, 67.9518,
12.0567

■ 42.6066, 71.4445,
15.5326

■ 41.7669, 72.6179,
18.5328

Harmonies

Analogous

The Analogous color harmony consists of three colors that are next to each other on the color wheel.



80.9065, 4.0889, -0.9663



80.9047, 5.7901, 3.8217



80.9065, 4.7228, 8.4864

Triad

The Triadic color harmony groups three colors that are evenly spaced from another and form a triangle on the color wheel.



80.9065, 5.7878, 3.8231



80.9065, -8.6827, 12.3806



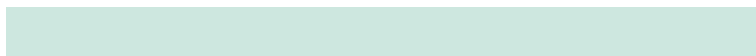
80.9065, -9.7114, -3.8374

Complementary

The Complementary color scheme is a pair of colors which are on the opposite of each other on the color wheel.



80.9047, 5.7901, 3.8217



86.8680, -14.1912, 5.6279

Split Complementary

Split-complementary colors differ from the complementary color scheme. The scheme consists of three colors, the original color and two neighbors of the complement color.



80.9065, -12.9848, 0.0971



80.9047, 5.7901, 3.8217



80.9065, -12.4014, 9.4296

Square

The Square scheme is like the rectangle color scheme, but the four colors are evenly spaced on the color wheel.



80.9065, 5.7878, 3.8231



80.9065, -3.7120, 13.2422



80.9065, -13.9572, 4.9806



80.9065, -4.9288, -5.5596

Rectangle

The Rectangle color scheme consists of four colors that form a rectangle on the color wheel.



80.9047, 5.7901, 3.8217



80.9065, 2.6027, 10.9322



80.9065, -13.9572, 4.9806



80.9065, -11.0200, -2.7182

Sweetspot

The Sweet Spot groups the original color and five complimentary colors.



80.9065, 5.7878, 3.8231



97.4060, -2.2032, 5.0797



80.6760, 6.2106, -5.7402



44.7465, -0.6301, 2.3087

0.0000, NaN, NaN



46.2646, -2.4686, 2.5136

Same Dimension

The Same Dimension uses a secret algorithm to generate beautiful new colors.



80.9065, 5.7878, 3.8231



88.2092, 9.4892, 4.0618



82.0838, 1.9773, 8.8928



38.0008, 1.8842, 1.8303



31.3036, 54.4866, 13.4198



8.6040, 15.1586, 2.2730

Inverse Universe

The Inverse Universe completely reimagines the original color for something new.



80.9065, 5.7878, 3.8231



88.2092, 9.4892, 4.0618



85.5981, -10.3659, 0.1974



38.0008, 1.8842, 1.8303



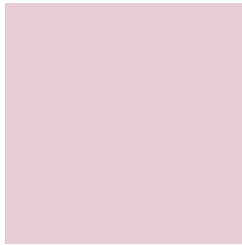
31.3036, 54.4866, 13.4198



8.6040, 15.1586, 2.2730

Previews

White Background



This preview shows how the HunterLab color 80.9047, 5.7901, 3.8217 looks on a white background.

Color Contrast Check

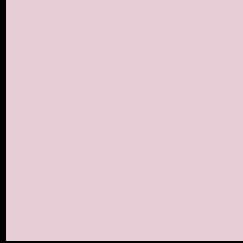
Large Text (above 18pt) WCAG AA × Fail

Any Text WCAG AA × Fail

Large Text (above 18pt) WCAG AAA × Fail

Any Text WCAG AAA × Fail

Black Background



This preview shows how the HunterLab color 80.9047, 5.7901, 3.8217 looks on a black background.

Color Contrast Check

Large Text (above 18pt) WCAG AA ✓ Pass

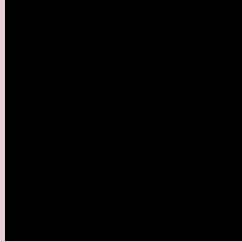
Any Text WCAG AA ✓ Pass

Large Text (above 18pt) WCAG AAA ✓ Pass

Any Text WCAG AAA ✓ Pass

If you want to check with other color combinations, try the [Color Contrast Checker](#).

HunterLab 80.9047, 5.7901, 3.8217 Background



This preview shows how black text looks on a background with the HunterLab color 80.9047, 5.7901, 3.8217.



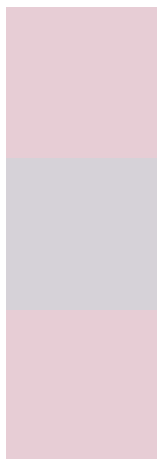
This preview shows how white text looks on a background with the HunterLab color 80.9047, 5.7901,

3.8217.

Color Blindness Simulation

Color vision deficiency is a very complex topic, and I could not describe the different causes any better than Wikipedia does, so if you want to learn more, you should check out their [article about color blindness](#).

Dichromacy



Original Color

80.9047, 5.7901, 3.8217

Protanopia

80.8376, -1.9720, 2.1284

Deuteranopia

80.9047, 5.7901, 3.8217



Tritanopia

80.9375, 7.8633, 0.4106

Trichromacy



Original Color

80.9047, 5.7901, 3.8217

Protanomaly

80.7674, 0.8447, 2.5891

Deuteranomaly

80.9047, 5.7901, 3.8217

Tritanomaly

80.8401, 7.3442, 1.7959

Monochromacy



Original Color

80.9047, 5.7901, 3.8217

Achromatopsia

82.0026, -4.3755, 4.4554

Achromatomaly

81.6451, -0.8857, 4.0947

CSS Examples

Text

The CSS property to change the color of the text to HunterLab 80.9047, 5.7901, 3.8217 is called "color". The color property can be set on classes, ids or directly on the HTML element.

This example shows how text in the color `rgb(231, 205, 213)` looks like.

```
.text, #text, p{  
    color:rgb(231, 205, 213)  
}
```

If you want to add a text shadow in that color use the text-shadow property, you can generate a text shadow directly with our [CSS Text Shadow Generator](#).

Here you see how black text with a 4 pixel rgb(231, 205, 213) colored shadow looks like.

```
.shadow{ text-shadow: 4px 4px 2px rgb(231, 205, 213) }
```

Border

The CSS property to change the border of an element to HunterLab 80.9047, 5.7901, 3.8217 is called "border".

The border property can be set on classes, ids or directly on the HTML element.

This example shows the color as border, it can be applied via the CSS property "border" or "border-color".

```
.border, #border, table{ border:4px solid rgb(231, 205, 213) }
```


If only the border color should be changed use the property `border-color`.

```
.border{ border-color:rgb(231, 205, 213) }
```

If you want to add a box shadow in that color use:

Here you see how a box with a 4 pixel `rgb(231, 205, 213)` colored shadow looks like.

```
.boxshadow{ -moz-box-shadow:4px 4px 4px  
4px rgb(231, 205, 213); -webkit-box-  
shadow:4px 4px 4px 4px rgb(231, 205, 213);  
box-shadow:4px 4px 4px 4px rgb(231, 205,  
213) }
```

Background

The CSS property to change the background color of an element to HunterLab 80.9047, 5.7901, 3.8217 is called "background". The background property can be set on classes, ids or directly on the HTML element.

```
.background, #background, body{  
background: rgb(231, 205, 213) }
```

If only the background color should be changed can be used:

```
.background{ background-color: rgb(231,  
205, 213) }
```

This example shows the color as background, it is applied via the CSS property "background".

To optimize and compress your CSS code, you can use our [online CSS compressor and optimizer](#) based on csstidy. If you want to create a linear or radial gradient as background or border, check our [CSS Gradient Generator](#).

Hey! You found this booklet interesting? Support Converting Colors with the new Membership Option!

The pro membership hides all ads, plus gives you double the colors in the color bucket, and more awesome pro features!

[Learn more, Memberships starting at \\$2.50/m!](#)

**Follow me
on Twitter!**

@ConvertingColor