

# Converting Colors

HunterLab(80.9129, 4.7116,  
8.4883)

Have a look what the booklet for  
HunterLab(80.9129, 4.7116, 8.4883)  
contains.

<b>HunterLab(80.8072, 4.8539, 8.4228)</b> .....	3
<i><b>Conversions</b></i> .....	4
<i><b>Details</b></i> .....	6
<i><b>Harmonies</b></i> .....	12
<i><b>Previews</b></i> .....	24
<i><b>Color Blindness Simulation</b></i> .....	28
<i><b>CSS Examples</b></i> .....	31

# Color

**HunterLab(80.8072, 4.8539,  
8.4228)**

# Conversions

## Conversions Part 1

<b>Format</b>	<b>Color</b>
Hex	E9CDCB
RGB	233, 205, 203
RGB Percent	91%, 80%, 80%
CMY	0.0863, 0.1961, 0.2039
CMYK	0.00, 0.12, 0.13, 0.09
HSL	4°, 41%, 85%
HSV	4°, 13%, 91%
XYZ	66.2150, 65.2980, 65.6138
YIQ	213.1440, 17.3300, 5.3140

# Conversions

## Conversions Part 2

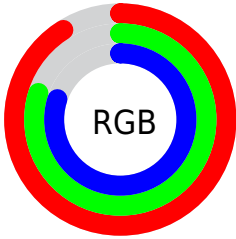
<b>Format</b>	<b>Color</b>
<b>R<sub>YB</sub></b>	233, 205, 203
Decimal	15322571
CIE <sub>Lab</sub>	84.64, 9.46, 4.58
CIE <sub>LCh</sub>	85, 10.513, 25.846
Yxy	65.3009, 0.3359, 0.3313
Android (android.graphics.Color)	4293512651 (0xFFE9CDCB)
YUV	213.1440, -5.0010, 17.4137
Hunter-Lab	80.8072, 4.8539, 8.4228

# Details

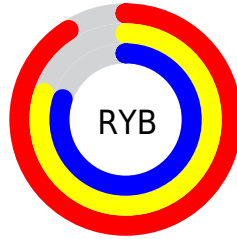
The HunterLab color  $80.8072, 4.8539, 8.4228$  is a light color, and the websafe version is hex  $\text{FFCCCC}$ . A complement of this color would be  $87.0230, -12.9901, 0.8722$ , and the grayscale version is  $81.6505, -4.3567, 4.4362$ .

A 20% lighter version of the original color is  $100.0000, -5.3358, 5.4332$ , and  $58.0088, 5.0232, 6.7710$  is the 20% darker color. If you saturate the color by 10%, you get  $73.8797, 12.7766, 11.2230$ , and if you desaturate by 10%, it is  $88.1092, -2.7070, 5.6818$ .

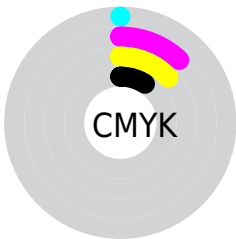
# Distribution



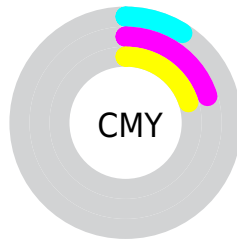
- Red (91%)
- Green (80%)
- Blue (80%)



- Red (91%)
- Yellow (80%)
- Blue (80%)



- Cyan (0%)
- Magenta (12%)
- Yellow (13%)
- Black (9%)



- Cyan (9%)
- Magenta (20%)
- Yellow (20%)

# Brightness & Saturation Gradients

These gradients show how the HunterLab color 80.8072, 4.8539, 8.4228 changes by changing the brightness by 10 percent. The first figure shows a shift by +10% for each color and the second figure -10%.

Similar to the brightness gradients but the following saturation gradients show a change of the HunterLab color 80.8072, 4.8539, 8.4228 by changing the saturation by 10% instead.



80.8072, 4.8539,  
8.4228

80.8072, 4.8539,  
8.4228

210.6828, 1.2363,  
17.0784

69.0689, 5.0320,  
7.5686

106.0577, 4.3366,  
10.1998

57.9599, 5.1547,  
6.7345

119.5144, 4.0098,  
11.1200

47.5199, 5.2133,  
5.9211

133.4964, 3.6406,  
12.0614

37.7952, 5.1996,  
5.1274

147.9849, 3.2316,  
13.0238

28.8427, 5.1025,  
4.3510

162.9625, 2.7850,  
14.0071

20.7358, 4.9063,  
3.5874

178.4140, 2.3025,

13.5742, 4.5876,

15.0108

2.8275

194.3250, 1.7858,  
16.0346

7.1660, 5.3703,  
3.0411

0.0000, NaN, NaN

80.8072, 4.8539,  
8.4228

80.8072, 4.8539,  
8.4228

73.8797, 12.7766,  
11.2230

88.1092, -2.7070,  
5.6818

67.3862, 21.0756,  
14.0615

95.7283, -9.9306,  
2.9999

61.4089, 29.7050,  
16.8999

98.0121, -12.3216,  
2.9483

56.0442, 38.5278,  
19.6625

■ 51.4025, 47.2608,  
22.2238

■ 47.5978, 55.4329,  
24.4054

■ 44.7263, 62.4094,  
26.0033

■ 42.8322, 67.5450,  
26.8639

■ 42.0495, 69.8240,  
27.1331

# Harmonies

## Analogous

The Analogous color harmony consists of three colors that are next to each other on the color wheel.



80.8090, 5.8675, 3.7088



80.8072, 4.8539, 8.4228



80.8090, 1.3564, 11.8584

# Triad

The Triadic color harmony groups three colors that are evenly spaced from another and form a triangle on the color wheel.



80.8090, 4.8515, 8.4241



80.8090, -12.4003, 9.5429



80.8090, -5.0368, -5.6413

# Complementary

The Complementary color scheme is a pair of colors which are on the opposite of each other on the color wheel.



80.8072, 4.8539, 8.4228



87.0230, -12.9901, 0.8722

# Split Complementary

Split-complementary colors differ from the complementary color scheme. The scheme consists of three colors, the original color and two neighbors of the complement color.



80.8090, -9.8363, -3.8479



80.8072, 4.8539, 8.4228



80.8090, -14.0191, 5.0825

# Square

The Square scheme is like the rectangle color scheme, but the four colors are evenly spaced on the color wheel.



80.8090, 4.8515, 8.4241



80.8090, -8.6158, 12.4752



80.8090, -13.0924, 0.1548



80.8090, 0.0754, -4.6085



# Rectangle

The Rectangle color scheme consists of four colors that form a rectangle on the color wheel.



80.8072, 4.8539, 8.4228



80.8090, -1.8643, 13.0632



80.8090, -13.0924, 0.1548



80.8090, -6.7390, -5.3461

# Sweetspot

The Sweet Spot groups the original color and five complimentary colors.



80.8090, 4.8515, 8.4241



96.6627, -2.0601, 6.6385



81.1208, 10.7142, -5.0825



44.4332, -0.6650, 3.1767

0.0000, NaN, NaN



46.2646, -2.4686, 2.5136



# Same Dimension

The Same Dimension uses a secret algorithm to generate beautiful new colors.



80.8090, 4.8515, 8.4241



87.7948, 7.2690, 10.0089



85.3362, -2.9640, 13.2761



39.0071, 1.0483, 3.5061



31.7727, 52.2662, 20.4932



9.2170, 13.6190, 5.9179

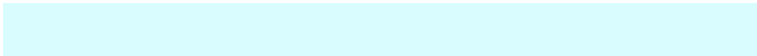


# Inverse Universe

The Inverse Universe completely reimagines the original color for something new.



87.0230, -12.9901, 0.8722



95.8300, -15.8178, 0.2393



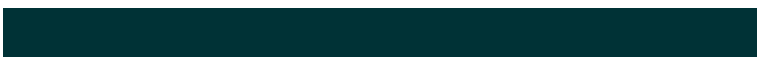
82.2753, -5.3625, -4.9505



41.1576, -5.1212, 0.8939



56.3005, -27.1099, -11.8482

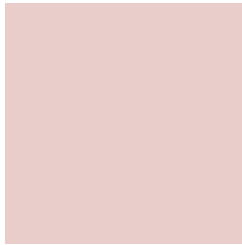


15.9405, -7.7983, -3.0899



# Previews

## White Background



This preview shows how the HunterLab color 80.8072, 4.8539, 8.4228 looks on a white background.

## Color Contrast Check

Large Text (above 18pt) WCAG AA × Fail

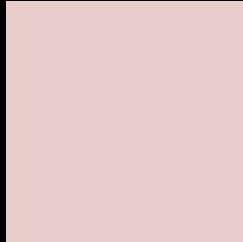
Any Text WCAG AA × Fail

Large Text (above 18pt) WCAG AAA × Fail

Any Text WCAG AAA × Fail



# Black Background



This preview shows how the HunterLab color 80.8072, 4.8539, 8.4228 looks on a black background.

## Color Contrast Check

Large Text (above 18pt) WCAG AA ✓ Pass

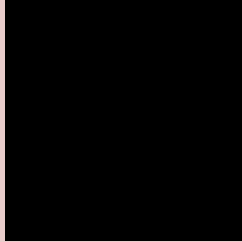
Any Text WCAG AA ✓ Pass

Large Text (above 18pt) WCAG AAA ✓ Pass

Any Text WCAG AAA ✓ Pass

If you want to check with other color combinations, try the [Color Contrast Checker](#).

## HunterLab 80.8072, 4.8539, 8.4228 Background



This preview shows how black text looks on a background with the HunterLab color 80.8072, 4.8539, 8.4228.



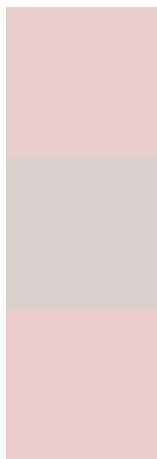
This preview shows how white text looks on a background with the HunterLab color 80.8072, 4.8539,

8.4228.

# Color Blindness Simulation

Color vision deficiency is a very complex topic, and I could not describe the different causes any better than Wikipedia does, so if you want to learn more, you should check out their [article about color blindness](#).

## Dichromacy



### Original Color

80.8072, 4.8539, 8.4228

### Protanopia

80.7145, -3.0184, 6.7900

### Deuteranopia

80.7216, 6.0839, 8.3476



## Tritanopia

80.8925, 9.0888, 1.3885

# Trichromacy



## Original Color

80.8072, 4.8539, 8.4228

## Protanomaly

80.6530, -0.1641, 7.2361

## Deuteranomaly

80.6163, 5.7312, 8.2224

## Tritanomaly

80.9211, 7.3598, 3.8687

# Monochromacy



## Original Color

80.8072, 4.8539, 8.4228

## Achromatopsia

81.5713, -4.3524, 4.4319

## Achromatomaly

81.1864, -1.2081, 5.9530

# CSS Examples

## Text

The CSS property to change the color of the text to HunterLab 80.8072, 4.8539, 8.4228 is called "color". The color property can be set on classes, ids or directly on the HTML element.

This example shows how text in the color `rgb(233, 205, 203)` looks like.

```
.text, #text, p{  
    color:rgb(233, 205, 203)  
}
```

If you want to add a text shadow in that color use the text-shadow property, you can generate a text shadow directly with our [CSS Text Shadow Generator](#).

Here you see how black text with a 4 pixel rgb(233, 205, 203) colored shadow looks like.

```
.shadow{ text-shadow: 4px 4px 2px rgb(233, 205, 203) }
```

## Border

The CSS property to change the border of an element to HunterLab 80.8072, 4.8539, 8.4228 is called "border".

The border property can be set on classes, ids or directly on the HTML element.

This example shows the color as border, it can be applied via the CSS property "border" or "border-color".

```
.border, #border, table{ border:4px solid rgb(233, 205, 203) }
```



If only the border color should be changed use the property `border-color`.

```
.border{ border-color:rgb(233, 205, 203) }
```

If you want to add a box shadow in that color use:

Here you see how a box with a 4 pixel `rgb(233, 205, 203)` colored shadow looks like.

```
.boxshadow{ -moz-box-shadow:4px 4px 4px 4px rgb(233, 205, 203); -webkit-box-shadow:4px 4px 4px 4px rgb(233, 205, 203); box-shadow:4px 4px 4px 4px rgb(233, 205, 203) }
```

# Background

The CSS property to change the background color of an element to HunterLab 80.8072, 4.8539, 8.4228 is called "background". The background property can be set on classes, ids or directly on the HTML element.

```
.background, #background, body{  
background: rgb(233, 205, 203) }
```

If only the background color should be changed can be used:

```
.background{ background-color: rgb(233,  
205, 203) }
```

This example shows the color as background, it is applied via the CSS property "background".

To optimize and compress your CSS code, you can use our [online CSS compressor and optimizer](#) based on csstidy. If you want to create a linear or radial gradient as background or border, check our [CSS Gradient Generator](#).

Hey! You found this booklet interesting? Support Converting Colors with the new Membership Option!

The pro membership hides all ads, plus gives you double the colors in the color bucket, and more awesome pro features!

**[Learn more, Memberships starting at \\$2.50/m!](#)**

**Follow me  
on Twitter!**

@ConvertingColor