

Converting Colors

HunterLab(80.9202, 23.3951,
-4.7039)

Have a look what the booklet for
HunterLab(80.9202, 23.3951,
-4.7039) contains.

HunterLab(80.9671, 23.2440, -4.5216)	3
<i>Conversions</i>	4
<i>Details</i>	6
<i>Harmonies</i>	12
<i>Previews</i>	24
<i>Color Blindness Simulation</i>	28
<i>CSS Examples</i>	31

Color

**HunterLab(80.9671, 23.2440,
-4.5216)**

Conversions

Conversions Part 1

Format	Color
Hex	FFC2E6
RGB	255, 194, 230
RGB Percent	100%, 76%, 90%
CMY	0.0000, 0.2392, 0.0980
CMYK	0.00, 0.24, 0.10, 0.00
HSL	325°, 100%, 88%
HSV	325°, 24%, 100%
XYZ	74.8147, 65.5567, 83.5735
YIQ	216.3430, 24.8000, 24.1280

Conversions

Conversions Part 2

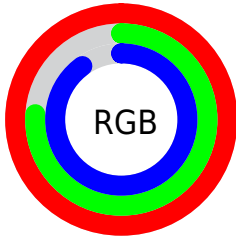
Format	Color
R_{YB}	255, 194, 230
Decimal	16761574
CIE _{Lab}	84.77, 27.30, -9.38
CIE _{LCh}	85, 28.867, 341.046
Yxy	65.5594, 0.3341, 0.2927
Android (android.graphics.Color)	4294951654 (0xFFFFC2E6)
YUV	216.3430, 6.7329, 33.9022
Hunter-Lab	80.9671, 23.2440, -4.5216

Details

The HunterLab color $80.9671, 23.2440, -4.5216$ is a light color, and the websafe version is hex FFCCFF . A complement of this color would be $93.8642, -29.6298, 14.9856$, and the grayscale version is $82.9805, -4.4276, 4.5085$.

A 20% lighter version of the original color is $98.7291, -3.2108, 3.9652$, and $58.1532, 21.9527, -4.6092$ is the 20% darker color. If you saturate the color by 10%, you get $73.8891, 35.4384, -7.9310$, and if you desaturate by 10%, it is $88.6034, 11.1466, -0.6084$.

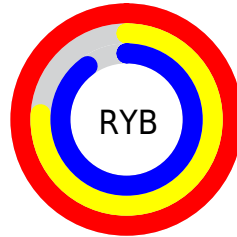
Distribution



Red (100%)

Green (76%)

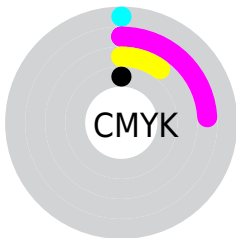
Blue (90%)



Red (100%)

Yellow (76%)

Blue (90%)

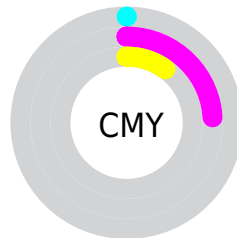


Cyan (0%)

Magenta (24%)

Yellow (10%)

Black (0%)



Cyan (0%)

Magenta (24%)

Yellow (10%)

Brightness & Saturation Gradients

These gradients show how the HunterLab color 80.9671, 23.2440, -4.5216 changes by changing the brightness by 10 percent. The first figure shows a shift by +10% for each color and the second figure -10%.

Similar to the brightness gradients but the following saturation gradients show a change of the HunterLab color 80.9671, 23.2440, -4.5216 by changing the saturation by 10% instead.

80.9671, 23.2440,
-4.5216

80.9671, 23.2440,
-4.5216

210.9027, 25.5724,
-0.4988

69.2206, 22.6427,
-4.7547

106.2327, 24.1968,
-3.9053

58.1029, 21.9536,
-4.9353

119.6964, 24.5674,
-3.5314

47.6538, 21.1633,
-5.0569

133.6853, 24.8736,
-3.1166

37.9192, 20.2599,
-5.1134

148.1803, 25.1197,
-2.6633

28.9560, 19.2290,
-5.0970

163.1644, 25.3095,
-2.1732

20.8374, 18.0557,
-4.9985

178.6220, 25.4463,

13.6625, 16.7328,

-1.6481

-4.8078

194.5391, 25.5331,
-1.0895

7.2677, 17.0638,
-5.1583

0.0000, INF, -NF

80.9671, 23.2440,
-4.5216

80.9671, 23.2440,
-4.5216

73.8891, 35.4384,
-7.9310

88.6034, 11.1466,
-0.6084

67.4648, 47.5232,
-10.6651

96.7095, -0.7417,
3.6745

61.8126, 59.1111,
-12.4986

100.0000, -5.3358,
5.4332

57.0567, 69.6073,
-13.1778

■ 53.3103, 78.2352,
-12.4754

■ 50.6430, 84.2082,
-10.2879

■ 49.0357, 87.0620,
-6.7436

■ 48.4538, 87.5555,
-4.1693

Harmonies

Analogous

The Analogous color harmony consists of three colors that are next to each other on the color wheel.



80.9688, 14.4565, -17.8070



80.9671, 23.2440, -4.5216



80.9688, 24.3478, 9.2419

Triad

The Triadic color harmony groups three colors that are evenly spaced from another and form a triangle on the color wheel.



80.9688, 23.2409, -4.5201



80.9688, -9.5055, 26.0353



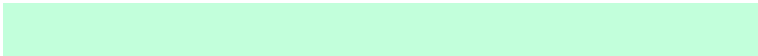
80.9688, -23.9625, -14.6356

Complementary

The Complementary color scheme is a pair of colors which are on the opposite of each other on the color wheel.



80.9671, 23.2440, -4.5216



93.8642, -29.6298, 14.9856

Split Complementary

Split-complementary colors differ from the complementary color scheme. The scheme consists of three colors, the original color and two neighbors of the complement color.



80.9688, -29.4903, -0.7450



80.9671, 23.2440, -4.5216



80.9688, -21.5361, 21.6974

Square

The Square scheme is like the rectangle color scheme, but the four colors are evenly spaced on the color wheel.



80.9688, 23.2409, -4.5201



80.9688, 4.7649, 25.3792



80.9688, -28.6339, 12.4215



80.9688, -13.0300, -24.3086

Rectangle

The Rectangle color scheme consists of four colors that form a rectangle on the color wheel.



80.9671, 23.2440, -4.5216



80.9688, 20.5019, 16.7254



80.9688, -28.6339, 12.4215



80.9688, -26.4790, -10.2134

Sweetspot

The Sweet Spot groups the original color and five complimentary colors.



80.9688, 23.2409, -4.5201



94.1663, 2.8957, 2.3217



77.9576, 15.5588, -23.6436



43.3373, 1.6707, 0.9530

0.0000, NaN, NaN



46.2646, -2.4686, 2.5136

Same Dimension

The Same Dimension uses a secret algorithm to generate beautiful new colors.



80.9688, 23.2409, -4.5201



77.2965, 29.4355, -6.3256



80.0133, 18.3039, 9.0854



42.6228, 2.7155, 0.5750



35.0685, 63.4470, -3.6262



11.0415, 20.1542, -2.5192

Inverse Universe

The Inverse Universe completely reimagines the original color for something new.



80.9688, 23.2409, -4.5201



77.2965, 29.4355, -6.3256



94.7752, -24.4262, 1.9567



42.6228, 2.7155, 0.5750



35.0685, 63.4470, -3.6262



11.0415, 20.1542, -2.5192

Previews

White Background



This preview shows how the HunterLab color 80.9671, 23.2440, -4.5216 looks on a white background.

Color Contrast Check

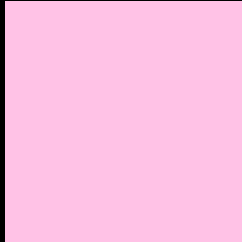
Large Text (above 18pt) WCAG AA × Fail

Any Text WCAG AA × Fail

Large Text (above 18pt) WCAG AAA × Fail

Any Text WCAG AAA × Fail

Black Background



This preview shows how the HunterLab color 80.9671, 23.2440, -4.5216 looks on a black background.

Color Contrast Check

Large Text (above 18pt) WCAG AA ✓ Pass

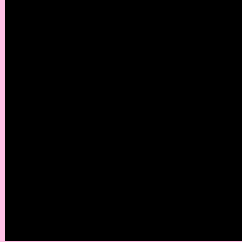
Any Text WCAG AA ✓ Pass

Large Text (above 18pt) WCAG AAA ✓ Pass

Any Text WCAG AAA ✓ Pass

If you want to check with other color combinations, try the [Color Contrast Checker](#).

HunterLab 80.9671, 23.2440, -4.5216 Background



This preview shows how black text looks on a background with the HunterLab color 80.9671, 23.2440, -4.5216.



This preview shows how white text looks on a background with the HunterLab color 80.9671, 23.2440, -4.5216.

-4.5216.

Color Blindness Simulation

Color vision deficiency is a very complex topic, and I could not describe the different causes any better than Wikipedia does, so if you want to learn more, you should check out their [article about color blindness](#).

Dichromacy



Original Color

80.9671, 23.2440, -4.5216

Protanopia

81.0246, 0.3179, -10.3918

Deuteranopia

81.0874, 5.8641, -3.5999



Tritanopia

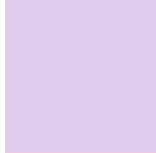
80.9745, 17.8005, 4.6005

Trichromacy



Original Color

80.9671, 23.2440, -4.5216



Protanomaly

80.6778, 8.0994, -8.4641



Deuteranomaly

81.0747, 11.9182, -4.0439



Tritanomaly

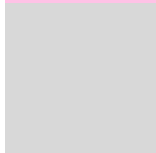
81.0340, 19.8725, 1.2459

Monochromacy



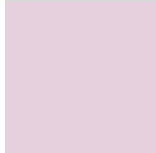
Original Color

80.9671, 23.2440, -4.5216



Achromatopsia

82.8665, -4.4215, 4.5023



Achromatomaly

81.9483, 5.2314, 1.0952

CSS Examples

Text

The CSS property to change the color of the text to HunterLab 80.9671, 23.2440, -4.5216 is called "color". The color property can be set on classes, ids or directly on the HTML element.

This example shows how text in the color `rgb(255, 194, 230)` looks like.

```
.text, #text, p{  
    color:rgb(255, 194, 230)  
}
```

If you want to add a text shadow in that color use the text-shadow property, you can generate a text shadow directly with our [CSS Text Shadow Generator](#).

Here you see how black text with a 4 pixel rgb(255, 194, 230) colored shadow looks like.

```
.shadow{ text-shadow: 4px 4px 2px rgb(255, 194, 230) }
```

Border

The CSS property to change the border of an element to HunterLab 80.9671, 23.2440, -4.5216 is called "border". The border property can be set on classes, ids or directly on the HTML element.

This example shows the color as border, it can be applied via the CSS property "border" or "border-color".

```
.border, #border, table{ border:4px solid rgb(255, 194, 230) }
```


If only the border color should be changed use the property `border-color`.

```
.border{ border-color:rgb(255, 194, 230) }
```

If you want to add a box shadow in that color use:

Here you see how a box with a 4 pixel `rgb(255, 194, 230)` colored shadow looks like.

```
.boxshadow{ -moz-box-shadow:4px 4px 4px  
4px rgb(255, 194, 230); -webkit-box-  
shadow:4px 4px 4px 4px rgb(255, 194, 230);  
box-shadow:4px 4px 4px 4px rgb(255, 194,  
230) }
```

Background

The CSS property to change the background color of an element to HunterLab 80.9671, 23.2440, -4.5216 is called "background". The background property can be set on classes, ids or directly on the HTML element.

```
.background, #background, body{  
background: rgb(255, 194, 230) }
```

If only the background color should be changed can be used:

```
.background{ background-color: rgb(255,  
194, 230) }
```

This example shows the color as background, it is applied via the CSS property "background".

To optimize and compress your CSS code, you can use our [online CSS compressor and optimizer](#) based on csstidy. If you want to create a linear or radial gradient as background or border, check our [CSS Gradient Generator](#).

Hey! You found this booklet interesting? Support Converting Colors with the new Membership Option!

The pro membership hides all ads, plus gives you double the colors in the color bucket, and more awesome pro features!

[Learn more, Memberships starting at \\$2.50/m!](#)

**Follow me
on Twitter!**

@ConvertingColor