

Converting Colors

HunterLab(81.0258, 4.2844,
7.4823)

Have a look what the booklet for
HunterLab(81.0258, 4.2844, 7.4823)
contains.

HunterLab(81.0892, 4.4581, 7.3500)	3
<i>Conversions</i>	4
<i>Details</i>	6
<i>Harmonies</i>	12
<i>Previews</i>	24
<i>Color Blindness Simulation</i>	28
<i>CSS Examples</i>	31

Color

**HunterLab(81.0892, 4.4581,
7.3500)**

Conversions

Conversions Part 1

Format	Color
Hex	E8CECE
RGB	232, 206, 206
RGB Percent	91%, 81%, 81%
CMY	0.0902, 0.1921, 0.1922
CMYK	0.00, 0.11, 0.11, 0.09
HSL	0°, 36%, 86%
HSV	0°, 11%, 91%
XYZ	66.4905, 65.7546, 67.5799
YIQ	213.7740, 15.4960, 5.5120

Conversions

Conversions Part 2

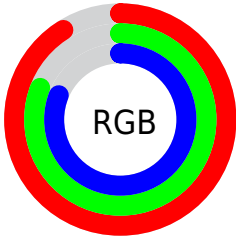
Format	Color
R _Y B	232, 206, 206
Decimal	15257294
CIE Lab	84.87, 9.07, 3.32
CIE LCh	85, 9.653, 20.088
Yxy	65.7575, 0.3327, 0.3291
Android (android.graphics.Color)	4293447374 (0xFFE8CECE)
YUV	213.7740, -3.8326, 15.9842
Hunter-Lab	81.0892, 4.4581, 7.3500

Details

The HunterLab color **81.0892, 4.4581, 7.3500** is a light color, and the websafe version is hex **FFCCCC**. A complement of this color would be **87.5555, -12.8056, 2.0288**, and the grayscale version is **81.9179, -4.3709, 4.4508**.

A 20% lighter version of the original color is **100.0000, -5.3358, 5.4332**, and **58.2697, 4.6330, 5.7607** is the 20% darker color. If you saturate the color by 10%, you get **73.7257, 13.0998, 9.7181**, and if you desaturate by 10%, it is **88.8677, -3.8185, 5.1380**.

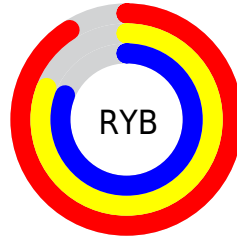
Distribution



Red (91%)

Green (81%)

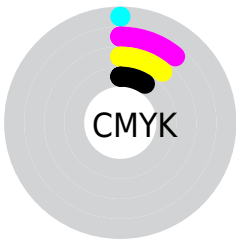
Blue (81%)



Red (91%)

Yellow (81%)

Blue (81%)

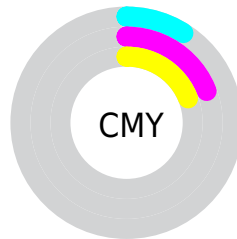


Cyan (0%)

Magenta (11%)

Yellow (11%)

Black (9%)



Cyan (9%)


Magenta (19%)


Yellow (19%)

Brightness & Saturation Gradients


These gradients show how the HunterLab color 81.0892, 4.4581, 7.3500 changes by changing the brightness by 10 percent. The first figure shows a shift by +10% for each color and the second figure -10%.

Similar to the brightness gradients but the following saturation gradients show a change of the HunterLab color 81.0892, 4.4581, 7.3500 by changing the saturation by 10% instead.


 81.0892, 4.4581,
7.3500

 81.0892, 4.4581,
7.3500

211.0709, 0.6959,
15.5663

 69.3365, 4.6557,
6.5562


106.3664, 3.9046,
9.0154

 58.2123, 4.7989,
5.7863


119.8356, 3.5606,
9.8834

 47.7563, 4.8793,
5.0417


133.8298, 3.1750,
10.7749

 38.0142, 4.8888,
4.3224

148.3298, 2.7502,
11.6892

 29.0428, 4.8167,
3.6278

163.3187, 2.2881,
12.6259

 20.9151, 4.6479,
2.9560

178.7811, 1.7907,

 13.7301, 4.3596,

13.5846

2.3027

194.7027, 1.2595,
14.5649

■ 7.3445, 4.9867,
2.2711

0.0000, NaN, NaN

■ 81.0892, 4.4581,
7.3500

■ 81.0892, 4.4581,
7.3500

■ 73.7257, 13.0998,
9.7181

■ 88.8677, -3.8185,
5.1380

■ 66.8488, 22.1138,
12.2438

■ 96.9953, -11.7544,
3.0633

■ 60.5564, 31.4300,
14.9127

■ 97.9265, -12.6259,
2.8401

■ 54.9655, 40.8564,
17.6687

■ 50.2100, 50.0074,
20.3922

■ 46.4247, 58.2624,
22.8849

■ 43.7136, 64.8404,
24.8924

■ 42.0995, 69.0714,
26.1921

■ 41.4207, 70.9292,
26.7650

Harmonies

Analogous

The Analogous color harmony consists of three colors that are next to each other on the color wheel.



81.0910, 4.8946, 2.8991



81.0892, 4.4581, 7.3500



81.0910, 1.6325, 10.8197

Triad

The Triadic color harmony groups three colors that are evenly spaced from another and form a triangle on the color wheel.



81.0910, 4.4557, 7.3513



81.0910, -11.2410, 9.8102



81.0910, -5.9025, -4.6511

Complementary

The Complementary color scheme is a pair of colors which are on the opposite of each other on the color wheel.



81.0892, 4.4581, 7.3500



87.5555, -12.8056, 2.0288

Split Complementary

Split-complementary colors differ from the complementary color scheme. The scheme consists of three colors, the original color and two neighbors of the complement color.



81.0910, -10.1273, -2.5610



81.0892, 4.4581, 7.3500



81.0910, -13.1621, 5.9002

Square

The Square scheme is like the rectangle color scheme, but the four colors are evenly spaced on the color wheel.



81.0910, 4.4557, 7.3513



81.0910, -7.4546, 12.1815



81.0910, -12.7592, 1.3625



81.0910, -1.1597, -4.2070

Rectangle

The Rectangle color scheme consists of four colors that form a rectangle on the color wheel.



81.0892, 4.4581, 7.3500



81.0910, -1.1866, 12.1897



81.0910, -12.7592, 1.3625



81.0910, -7.4285, -4.2172

Sweetspot

The Sweet Spot groups the original color and five complimentary colors.



81.0910, 4.4557, 7.3513



97.3312, -2.6137, 6.1534



81.9301, 8.9477, -4.6063



44.7027, -0.8699, 2.9370

0.0000, NaN, NaN



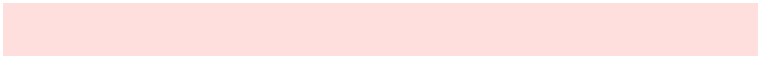
46.2646, -2.4686, 2.5136

Same Dimension

The Same Dimension uses a secret algorithm to generate beautiful new colors.



81.0910, 4.4557, 7.3513



88.7083, 6.7187, 8.6604



85.0152, -2.3246, 11.6214



37.9056, 1.3684, 3.1968



30.8623, 52.8476, 19.9424



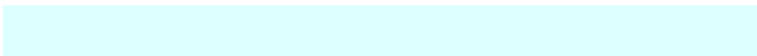
8.3904, 14.3634, 5.4216

Inverse Universe

The Inverse Universe completely reimagines the original color for something new.



87.5555, -12.8056, 2.0288



97.0786, -15.6439, 1.7646



83.4337, -6.1948, -2.9492



40.4178, -5.3367, 1.1293



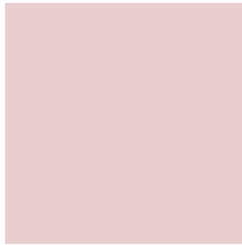
59.3829, -31.4758, -6.2764



16.1430, -8.5568, -1.7056

Previews

White Background



This preview shows how the HunterLab color 81.0892, 4.4581, 7.3500 looks on a white background.

Color Contrast Check

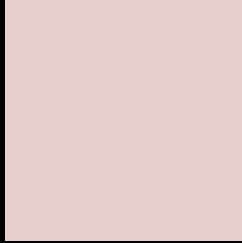
Large Text (above 18pt) WCAG AA × Fail

Any Text WCAG AA × Fail

Large Text (above 18pt) WCAG AAA × Fail

Any Text WCAG AAA × Fail

Black Background



This preview shows how the HunterLab color 81.0892, 4.4581, 7.3500 looks on a black background.

Color Contrast Check

Large Text (above 18pt) WCAG AA ✓ Pass

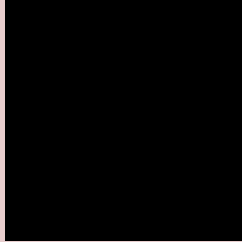
Any Text WCAG AA ✓ Pass

Large Text (above 18pt) WCAG AAA ✓ Pass

Any Text WCAG AAA ✓ Pass

If you want to check with other color combinations, try the [Color Contrast Checker](#).

HunterLab 81.0892, 4.4581, 7.3500 Background



This preview shows how black text looks on a background with the HunterLab color 81.0892, 4.4581, 7.3500.



This preview shows how white text looks on a background with the HunterLab color 81.0892, 4.4581,

7.3500.

Color Blindness Simulation

Color vision deficiency is a very complex topic, and I could not describe the different causes any better than Wikipedia does, so if you want to learn more, you should check out their [article about color blindness](#).

Dichromacy



Original Color

81.0892, 4.4581, 7.3500

Protanopia

81.1116, -3.0349, 5.8343

Deuteranopia

81.1055, 6.0339, 7.3962



Tritanopia

81.1452, 8.5536, 0.6776

Trichromacy



Original Color

81.0892, 4.4581, 7.3500

Protanomaly

81.0460, -0.1912, 6.2814

Deuteranomaly

81.0008, 5.6828, 7.2703

Tritanomaly

81.1742, 6.8185, 3.1809

Monochromacy



Original Color

81.0892, 4.4581, 7.3500

Achromatopsia

82.0026, -4.3755, 4.4554

Achromatomaly

81.6479, -1.0620, 5.5403

CSS Examples

Text

The CSS property to change the color of the text to HunterLab 81.0892, 4.4581, 7.3500 is called "color". The color property can be set on classes, ids or directly on the HTML element.

This example shows how text in the color `rgb(232, 206, 206)` looks like.

```
.text, #text, p{  
    color:rgb(232, 206, 206)  
}
```

If you want to add a text shadow in that color use the text-shadow property, you can generate a text shadow directly with our [CSS Text Shadow Generator](#).

Here you see how black text with a 4 pixel rgb(232, 206, 206) colored shadow looks like.

```
.shadow{ text-shadow: 4px 4px 2px rgb(232, 206, 206) }
```

Border

The CSS property to change the border of an element to HunterLab 81.0892, 4.4581, 7.3500 is called "border". The border property can be set on classes, ids or directly on the HTML element.

This example shows the color as border, it can be applied via the CSS property "border" or "border-color".

```
.border, #border, table{ border:4px solid rgb(232, 206, 206) }
```


If only the border color should be changed use the property border-color.

```
.border{ border-color:rgb(232, 206, 206) }
```

If you want to add a box shadow in that color use:

Here you see how a box with a 4 pixel rgb(232, 206, 206) colored shadow looks like.

```
.boxshadow{ -moz-box-shadow:4px 4px 4px  
4px rgb(232, 206, 206); -webkit-box-  
shadow:4px 4px 4px 4px rgb(232, 206, 206);  
box-shadow:4px 4px 4px 4px rgb(232, 206,  
206) }
```

Background

The CSS property to change the background color of an element to HunterLab 81.0892, 4.4581, 7.3500 is called "background". The background property can be set on classes, ids or directly on the HTML element.

```
.background, #background, body{  
background: rgb(232, 206, 206) }
```

If only the background color should be changed can be used:

```
.background{ background-color: rgb(232,  
206, 206) }
```

This example shows the color as background, it is applied via the CSS property "background".

To optimize and compress your CSS code, you can use our [online CSS compressor and optimizer](#) based on csstidy. If you want to create a linear or radial gradient as background or border, check our [CSS Gradient Generator](#).

Hey! You found this booklet interesting? Support Converting Colors with the new Membership Option!

The pro membership hides all ads, plus gives you double the colors in the color bucket, and more awesome pro features!

[Learn more, Memberships starting at \\$2.50/m!](#)

**Follow me
on Twitter!**

@ConvertingColor