

Converting Colors

HunterLab(81.0621, 2.6600,
5.6954)

Have a look what the booklet for
HunterLab(81.0621, 2.6600, 5.6954)
contains.

HunterLab(80.9691, 2.7017, 5.7693)	3
<i>Conversions</i>	4
<i>Details</i>	6
<i>Harmonies</i>	12
<i>Previews</i>	24
<i>Color Blindness Simulation</i>	28
<i>CSS Examples</i>	31

Color

**HunterLab(80.9691, 2.7017,
5.7693)**

Conversions

Conversions Part 1

Format	Color
Hex	E3CFD1
RGB	227, 207, 209
RGB Percent	89%, 81%, 82%
CMY	0.1098, 0.1882, 0.1804
CMYK	0.00, 0.09, 0.08, 0.11
HSL	354°, 26%, 85%
HSV	354°, 9%, 89%
XYZ	65.5000, 65.5600, 69.5237
YIQ	213.2080, 11.2780, 4.8620

Conversions

Conversions Part 2

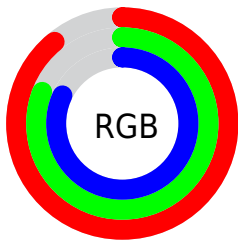
Format	Color
R _Y B	227, 207, 209
Decimal	14929873
CIE Lab	84.77, 7.28, 1.52
CIE LCh	85, 7.438, 11.820
Yxy	65.5628, 0.3265, 0.3269
Android (android.graphics.Color)	4293119953 (0xFFE3CFD1)
YUV	213.2080, -2.0745, 12.0956
Hunter-Lab	80.9691, 2.7017, 5.7693

Details

The HunterLab color $80.9691, 2.7017, 5.7693$ is a light color, and the websafe version is hex `CCCCCC`. A complement of this color would be $85.8146, -11.2390, 3.4631$, and the grayscale version is $81.6677, -4.3576, 4.4372$.

A 20% lighter version of the original color is $100.0000, -5.3358, 5.4332$, and $58.2406, 3.2681, 4.3757$ is the 20% darker color. If you saturate the color by 10%, you get $73.7525, 11.3594, 7.1392$, and if you desaturate by 10%, it is $88.5677, -5.6567, 4.6382$.

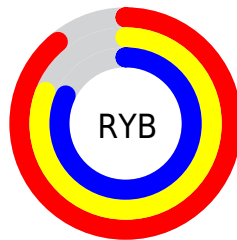
Distribution



Red (89%)

Green (81%)

Blue (82%)



Red (89%)

Yellow (81%)

Blue (82%)

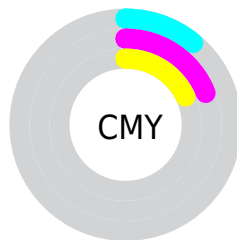


Cyan (0%)

Magenta (9%)

Yellow (8%)

Black (11%)



Cyan (11%)

Magenta (19%)

Yellow (18%)

Brightness & Saturation Gradients

These gradients show how the HunterLab color 80.9691, 2.7017, 5.7693 changes by changing the brightness by 10 percent. The first figure shows a shift by +10% for each color and the second figure -10%.

Similar to the brightness gradients but the following saturation gradients show a change of the HunterLab color 80.9691, 2.7017, 5.7693 by changing the saturation by 10% instead.

80.9691, 2.7017,
5.7693

80.9691, 2.7017,
5.7693

210.9056, -1.6759,
13.3635

69.2225, 2.9816,
5.0605

106.2350, 1.9944,
7.2772

58.1048, 3.2112,
4.3806

119.6988, 1.5780,
8.0715

47.6556, 3.3829,
3.7322

133.6878, 1.1224,
8.8922

37.9209, 3.4895,
3.1166

148.1829, 0.6299,
9.7383

28.9575, 3.5215,
2.5355

163.1670, 0.1022,
10.6091

20.8387, 3.4655,
1.9902


178.6247, -0.4589,

13.6636, 3.3008,


11.5040


1.4821


194.5419, -1.0520,
12.4223

 7.2691, 3.9762,
1.2645


0.0000, NaN, NaN


 80.9691, 2.7017,
5.7693


 80.9691, 2.7017,
5.7693


 73.7525, 11.3594,
7.1392


 88.5677, -5.6567,
4.6382

 66.9813, 20.3196,
8.7797

 96.4888, -13.7334,
3.7067

 60.7433, 29.5192,
10.7214

 97.5044, -14.1293,
2.3058

 55.1438, 38.7917,
12.9725

■ 50.3057, 47.8035,
15.4957

■ 46.3584, 56.0078,
18.1787

■ 43.4125, 62.6852,
20.8164

■ 41.5178, 67.1552,
23.1366

■ 40.5714, 69.2819,
24.8609

Harmonies

Analogous

The Analogous color harmony consists of three colors that are next to each other on the color wheel.



80.9709, 2.4901, 2.2847



80.9691, 2.7017, 5.7693



80.9709, 1.0022, 8.7574

Triad

The Triadic color harmony groups three colors that are evenly spaced from another and form a triangle on the color wheel.



80.9709, 2.6995, 5.7706



80.9709, -8.9771, 9.2527



80.9709, -6.5149, -2.2339

Complementary

The Complementary color scheme is a pair of colors which are on the opposite of each other on the color wheel.



80.9691, 2.7017, 5.7693



85.8146, -11.2390, 3.4631

Split Complementary

Split-complementary colors differ from the complementary color scheme. The scheme consists of three colors, the original color and two neighbors of the complement color.



80.9709, -9.5174, -0.1981



80.9691, 2.7017, 5.7693



80.9709, -10.9214, 6.4742

Square

The Square scheme is like the rectangle color scheme, but the four colors are evenly spaced on the color wheel.



80.9709, 2.6995, 5.7706



80.9709, -5.7653, 10.7071



80.9709, -11.1174, 3.0202



80.9709, -2.8740, -2.4429

Rectangle

The Rectangle color scheme consists of four colors that form a rectangle on the color wheel.



80.9691, 2.7017, 5.7693



80.9709, -0.9649, 10.1047



80.9709, -11.1174, 3.0202



80.9709, -7.6307, -1.7364

Sweetspot

The Sweet Spot groups the original color and five complimentary colors.



80.9709, 2.6995, 5.7706



97.3551, -2.4806, 5.8059



81.3524, 5.1491, -2.7459



44.7167, -0.7922, 2.7339

0.0000, NaN, NaN



46.2646, -2.4686, 2.5136

Same Dimension

The Same Dimension uses a secret algorithm to generate beautiful new colors.



80.9709, 2.6995, 5.7706



90.4820, 5.2842, 6.9123



83.3301, -1.7867, 9.3125



37.9358, 1.5343, 2.7584



30.9311, 53.1097, 18.9072



8.4556, 14.6123, 4.4410

Inverse Universe

The Inverse Universe completely reimagines the original color for something new.



80.9709, 2.6995, 5.7706



90.4820, 5.2842, 6.9123



83.3527, -6.8171, -0.4517



37.9358, 1.5343, 2.7584



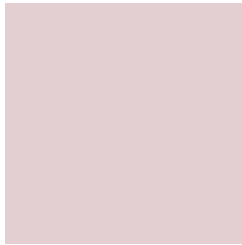
30.9311, 53.1097, 18.9072



8.4556, 14.6123, 4.4410

Previews

White Background



This preview shows how the HunterLab color 80.9691, 2.7017, 5.7693 looks on a white background.

Color Contrast Check

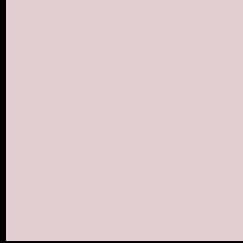
Large Text (above 18pt) WCAG AA × Fail

Any Text WCAG AA × Fail

Large Text (above 18pt) WCAG AAA × Fail

Any Text WCAG AAA × Fail

Black Background



This preview shows how the HunterLab color 80.9691, 2.7017, 5.7693 looks on a black background.

Color Contrast Check

Large Text (above 18pt) WCAG AA ✓ Pass

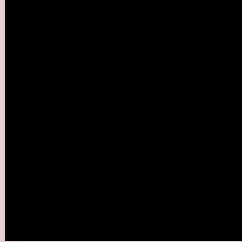
Any Text WCAG AA ✓ Pass

Large Text (above 18pt) WCAG AAA ✓ Pass

Any Text WCAG AAA ✓ Pass

If you want to check with other color combinations, try the [Color Contrast Checker](#).

HunterLab 80.9691, 2.7017, 5.7693 Background



This preview shows how black text looks on a background with the HunterLab color 80.9691, 2.7017, 5.7693.



This preview shows how white text looks on a background with the HunterLab color 80.9691, 2.7017,

5.7693.

Color Blindness Simulation

Color vision deficiency is a very complex topic, and I could not describe the different causes any better than Wikipedia does, so if you want to learn more, you should check out their [article about color blindness](#).

Dichromacy



Original Color

80.9691, 2.7017, 5.7693

Protanopia

81.0794, -3.0234, 4.8419

Deuteranopia

80.9875, 5.8199, 5.8453



Tritanopia

80.9575, 6.4813, -0.0992

Trichromacy



Original Color

80.9691, 2.7017, 5.7693

Protanomaly

81.1211, -1.3713, 5.3986

Deuteranomaly

81.0771, 4.5989, 5.9279

Tritanomaly

81.0224, 4.9161, 1.9740

Monochromacy



Original Color

80.9691, 2.7017, 5.7693

Achromatopsia

81.5713, -4.3524, 4.4319

Achromatomaly

81.3925, -1.8796, 4.7479

CSS Examples

Text

The CSS property to change the color of the text to HunterLab 80.9691, 2.7017, 5.7693 is called "color". The color property can be set on classes, ids or directly on the HTML element.

This example shows how text in the color `rgb(227, 207, 209)` looks like.

```
.text, #text, p{  
    color:rgb(227, 207, 209)  
}
```

If you want to add a text shadow in that color use the text-shadow property, you can generate a text shadow directly with our [CSS Text Shadow Generator](#).

Here you see how black text with a 4 pixel rgb(227, 207, 209) colored shadow looks like.

```
.shadow{ text-shadow: 4px 4px 2px rgb(227, 207, 209) }
```

Border

The CSS property to change the border of an element to HunterLab 80.9691, 2.7017, 5.7693 is called "border". The border property can be set on classes, ids or directly on the HTML element.

This example shows the color as border, it can be applied via the CSS property "border" or "border-color".

```
.border, #border, table{ border:4px solid rgb(227, 207, 209) }
```


If only the border color should be changed use the property `border-color`.

```
.border{ border-color:rgb(227, 207, 209) }
```

If you want to add a box shadow in that color use:

Here you see how a box with a 4 pixel `rgb(227, 207, 209)` colored shadow looks like.

```
.boxshadow{ -moz-box-shadow:4px 4px 4px 4px rgb(227, 207, 209); -webkit-box-shadow:4px 4px 4px 4px rgb(227, 207, 209); box-shadow:4px 4px 4px 4px rgb(227, 207, 209) }
```

Background

The CSS property to change the background color of an element to HunterLab 80.9691, 2.7017, 5.7693 is called "background". The background property can be set on classes, ids or directly on the HTML element.

```
.background, #background, body{  
background: rgb(227, 207, 209) }
```

If only the background color should be changed can be used:

```
.background{ background-color: rgb(227,  
207, 209) }
```

This example shows the color as background, it is applied via the CSS property "background".

To optimize and compress your CSS code, you can use our [online CSS compressor and optimizer](#) based on csstidy. If you want to create a linear or radial gradient as background or border, check our [CSS Gradient Generator](#).

Hey! You found this booklet interesting? Support Converting Colors with the new Membership Option!

The pro membership hides all ads, plus gives you double the colors in the color bucket, and more awesome pro features!

[Learn more, Memberships starting at \\$2.50/m!](#)

**Follow me
on Twitter!**

@ConvertingColor