

# Converting Colors

HunterLab(81.0831, 2.3666,  
6.8230)

Have a look what the booklet for  
HunterLab(81.0831, 2.3666, 6.8230)  
contains.

<b>HunterLab(81.0090, 2.7154, 6.7601)</b> .....	3
<b><i>Conversions</i></b> .....	4
<b><i>Details</i></b> .....	6
<b><i>Harmonies</i></b> .....	12
<b><i>Previews</i></b> .....	24
<b><i>Color Blindness Simulation</i></b> .....	28
<b><i>CSS Examples</i></b> .....	31

# Color

**HunterLab(81.0090, 2.7154,  
6.7601)**

# Conversions

## Conversions Part 1

<b>Format</b>	<b>Color</b>
Hex	E4CFCF
RGB	228, 207, 207
RGB Percent	89%, 81%, 81%
CMY	0.1059, 0.1882, 0.1882
CMYK	0.00, 0.09, 0.09, 0.11
HSL	0°, 28%, 85%
HSV	0°, 9%, 89%
XYZ	65.5702, 65.6246, 68.2424
YIQ	213.2790, 12.5160, 4.4520

# Conversions

## Conversions Part 2

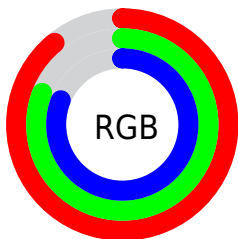
<b>Format</b>	<b>Color</b>
R <sub>Y</sub> B	228, 207, 207
Decimal	14995407
CIE Lab	84.81, 7.30, 2.65
CIE LCh	85, 7.760, 19.930
Yxy	65.6275, 0.3288, 0.3291
Android (android.graphics.Color)	4293185487 (0xFFE4CFCF)
YUV	213.2790, -3.0955, 12.9103
Hunter-Lab	81.0090, 2.7154, 6.7601

# Details

The HunterLab color  $81.0090, 2.7154, 6.7601$  is a light color, and the websafe version is hex `CCCCCC`. A complement of this color would be  $86.2277, -11.2107, 2.4676$ , and the grayscale version is  $81.7022, -4.3594, 4.4390$ .

A 20% lighter version of the original color is  $100.0000, -5.3358, 5.4332$ , and  $58.1834, 2.9606, 5.1939$  is the 20% darker color. If you saturate the color by 10%, you get  $73.7098, 11.1058, 9.0489$ , and if you desaturate by 10%, it is  $88.7013, -5.3221, 4.6217$ .

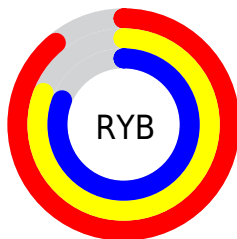
# Distribution



Red (89%)

Green (81%)

Blue (81%)



Red (89%)

Yellow (81%)

Blue (81%)

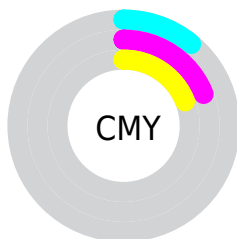


Cyan (0%)

Magenta (9%)

Yellow (9%)

Black (11%)



Cyan (11%)

Magenta (19%)

Yellow (19%)

# Brightness & Saturation Gradients

These gradients show how the HunterLab color 81.0090, 2.7154, 6.7601 changes by changing the brightness by 10 percent. The first figure shows a shift by +10% for each color and the second figure -10%.

Similar to the brightness gradients but the following saturation gradients show a change of the HunterLab color 81.0090, 2.7154, 6.7601 by changing the saturation by 10% instead.



81.0090, 2.7154,  
6.7601

81.0090, 2.7154,  
6.7601

210.9605, -1.6581,  
14.7421

69.2604, 2.9947,  
5.9984

106.2786, 2.0091,  
8.3661

58.1405, 3.2238,  
5.2624

119.7443, 1.5931,  
9.2064

47.6890, 3.3949,  
4.5541

133.7350, 1.1380,  
10.0711

37.9519, 3.5009,  
3.8740

148.2317, 0.6459,  
10.9598

28.9858, 3.5323,  
3.2224

163.2174, 0.1187,  
11.8717

20.8641, 3.4756,  
2.5986


178.6767, -0.4419,

13.6857, 3.3103,


12.8064


2.0004


194.5953, -1.0347,  
13.7634


 7.2942, 3.9687,  
1.9003


0.0000, NaN, NaN


 81.0090, 2.7154,  
6.7601


 81.0090, 2.7154,  
6.7601


 73.7098, 11.1058,  
9.0489


 88.7013, -5.3221,  
4.6217

 66.8701, 19.8644,  
11.4920

 96.7249, -13.0343,  
2.6140

 60.5816, 28.9398,  
14.0807

 97.5880, -13.8311,  
2.4118

 54.9548, 38.1746,  
16.7701

■ 50.1176, 47.2356,  
19.4577

■ 46.2040, 55.5626,  
21.9652

■ 43.3250, 62.4095,  
24.0506

■ 41.5241, 67.0680,  
25.4799

■ 40.6670, 69.4004,  
26.1984

# Harmonies

## Analogous

The Analogous color harmony consists of three colors that are next to each other on the color wheel.



81.0108, 3.0521, 3.1752



81.0090, 2.7154, 6.7601



81.0108, 0.4683, 9.5895

# Triad

The Triadic color harmony groups three colors that are evenly spaced from another and form a triangle on the color wheel.



81.0108, 2.7131, 6.7614



81.0108, -9.8857, 8.7907



81.0108, -5.6105, -2.7955

# Complementary

The Complementary color scheme is a pair of colors which are on the opposite of each other on the color wheel.



81.0090, 2.7154, 6.7601



86.2277, -11.2107, 2.4676

# Split Complementary

Split-complementary colors differ from the complementary color scheme. The scheme consists of three colors, the original color and two neighbors of the complement color.



81.0108, -9.0130, -1.1365



81.0090, 2.7154, 6.7601



81.0108, -11.4508, 5.6250

# Square

The Square scheme is like the rectangle color scheme, but the four colors are evenly spaced on the color wheel.



81.0108, 2.7131, 6.7614



81.0108, -6.8219, 10.7228



81.0108, -11.1344, 1.9852



81.0108, -1.8013, -2.4564



# Rectangle

The Rectangle color scheme consists of four colors that form a rectangle on the color wheel.



81.0090, 2.7154, 6.7601



81.0108, -1.7842, 10.7175



81.0108, -11.1344, 1.9852



81.0108, -6.8385, -2.4501

# Sweetspot

The Sweet Spot groups the original color and five complimentary colors.



81.0108, 2.7131, 6.7614



97.3312, -2.6139, 6.1535



81.6835, 6.3337, -2.8331



44.7027, -0.8700, 2.9370

0.0000, NaN, NaN



46.2646, -2.4686, 2.5136

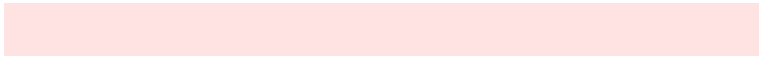


# Same Dimension

The Same Dimension uses a secret algorithm to generate beautiful new colors.



81.0108, 2.7131, 6.7614



90.3974, 4.8188, 8.1457



84.1924, -2.7428, 10.2591



37.9057, 1.3683, 3.1969



30.8625, 52.8470, 19.9425



8.3906, 14.3627, 5.4217



# Inverse Universe

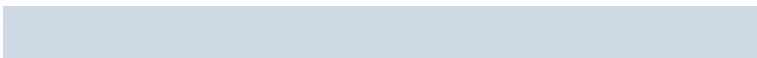
The Inverse Universe completely reimagines the original color for something new.



86.2277, -11.2107, 2.4676



97.4984, -14.1418, 2.2983



82.9166, -5.8663, -1.4946



40.4178, -5.3366, 1.1292



59.3812, -31.4737, -6.2787

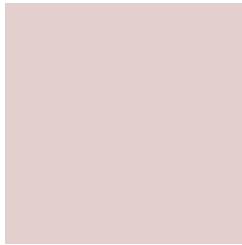


16.1426, -8.5563, -1.7062



# Previews

## White Background



This preview shows how the HunterLab color 81.0090, 2.7154, 6.7601 looks on a white background.

## Color Contrast Check

Large Text (above 18pt) WCAG AA × Fail

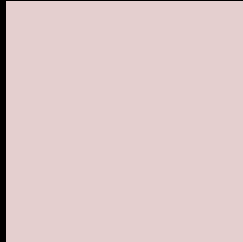
Any Text WCAG AA × Fail

Large Text (above 18pt) WCAG AAA × Fail

Any Text WCAG AAA × Fail



# Black Background



This preview shows how the HunterLab color 81.0090, 2.7154, 6.7601 looks on a black background.

## Color Contrast Check

Large Text (above 18pt) WCAG AA ✓ Pass

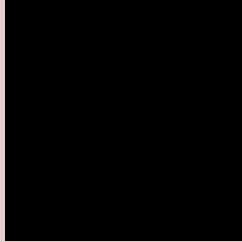
Any Text WCAG AA ✓ Pass

Large Text (above 18pt) WCAG AAA ✓ Pass

Any Text WCAG AAA ✓ Pass

If you want to check with other color combinations, try the [Color Contrast Checker](#).

## HunterLab 81.0090, 2.7154, 6.7601 Background



This preview shows how black text looks on a background with the HunterLab color 81.0090, 2.7154, 6.7601.



This preview shows how white text looks on a background with the HunterLab color 81.0090, 2.7154,



# Color Blindness Simulation

Color vision deficiency is a very complex topic, and I could not describe the different causes any better than Wikipedia does, so if you want to learn more, you should check out their [article about color blindness](#).

## Dichromacy



### Original Color

81.0090, 2.7154, 6.7601

### Protanopia

81.1116, -3.0349, 5.8343

### Deuteranopia

81.0309, 5.8439, 6.8401



## Tritanopia

81.0593, 6.8218, 0.0325

# Trichromacy



## Original Color

81.0090, 2.7154, 6.7601

## Protanomaly

81.1560, -1.3736, 6.3875

## Deuteranomaly

81.1193, 4.6195, 6.9202

## Tritanomaly

81.0916, 5.0847, 2.5577

# Monochromacy



## Original Color

81.0090, 2.7154, 6.7601

## Achromatopsia

81.5713, -4.3524, 4.4319

## Achromatomaly

81.3616, -2.0481, 5.1891

# CSS Examples

## Text

The CSS property to change the color of the text to HunterLab 81.0090, 2.7154, 6.7601 is called "color". The color property can be set on classes, ids or directly on the HTML element.

This example shows how text in the color `rgb(228, 207, 207)` looks like.

```
.text, #text, p{  
  color:rgb(228, 207, 207)  
}
```

If you want to add a text shadow in that color use the text-shadow property, you can generate a text shadow directly with our [CSS Text Shadow Generator](#).

Here you see how black text with a 4 pixel rgb(228, 207, 207) colored shadow looks like.

```
.shadow{ text-shadow: 4px 4px 2px rgb(228, 207, 207) }
```

## Border

The CSS property to change the border of an element to HunterLab 81.0090, 2.7154, 6.7601 is called "border". The border property can be set on classes, ids or directly on the HTML element.

This example shows the color as border, it can be applied via the CSS property "border" or "border-color".

```
.border, #border, table{ border:4px solid rgb(228, 207, 207) }
```



If only the border color should be changed use the property border-color.

```
.border{ border-color:rgb(228, 207, 207) }
```

If you want to add a box shadow in that color use:

Here you see how a box with a 4 pixel rgb(228, 207, 207) colored shadow looks like.

```
.boxshadow{ -moz-box-shadow:4px 4px 4px  
4px rgb(228, 207, 207); -webkit-box-  
shadow:4px 4px 4px 4px rgb(228, 207, 207);  
box-shadow:4px 4px 4px 4px rgb(228, 207,  
207) }
```

# Background

The CSS property to change the background color of an element to HunterLab 81.0090, 2.7154, 6.7601 is called "background". The background property can be set on classes, ids or directly on the HTML element.

```
.background, #background, body{  
background: rgb(228, 207, 207) }
```

If only the background color should be changed can be used:

```
.background{ background-color: rgb(228,  
207, 207) }
```

This example shows the color as background, it is applied via the CSS property "background".

To optimize and compress your CSS code, you can use our [online CSS compressor and optimizer](#) based on csstidy. If you want to create a linear or radial gradient as background or border, check our [CSS Gradient Generator](#).

Hey! You found this booklet interesting? Support Converting Colors with the new Membership Option!

The pro membership hides all ads, plus gives you double the colors in the color bucket, and more awesome pro features!

**[Learn more, Memberships starting at \\$2.50/m!](#)**

**Follow me  
on Twitter!**

@ConvertingColor