

# Converting Colors

HunterLab(81.1115, 5.6436,  
10.5830)

Have a look what the booklet for  
HunterLab(81.1115, 5.6436,  
10.5830) contains.

<b>HunterLab(81.1115, 5.6436, 10.5830)</b> .....	3
<b><i>Conversions</i></b> .....	4
<b><i>Details</i></b> .....	6
<b><i>Harmonies</i></b> .....	12
<b><i>Previews</i></b> .....	24
<b><i>Color Blindness Simulation</i></b> .....	28
<b><i>CSS Examples</i></b> .....	31

# Color

**HunterLab(81.1115, 5.6436,  
10.5830)**

# Conversions

## Conversions Part 1

Format	Color
Hex	EDCDC7
RGB	237, 205, 199
RGB Percent	93%, 80%, 78%
CMY	0.0706, 0.1961, 0.2196
CMYK	0.00, 0.13, 0.16, 0.07
HSL	9°, 51%, 85%
HSV	9°, 16%, 93%
XYZ	67.0652, 65.7908, 63.1970
YIQ	213.8840, 20.9980, 4.9180

# Conversions

## Conversions Part 2

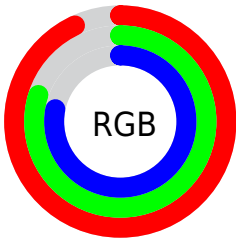
Format	Color
R <sub>Y</sub> B	237, 206, 199
Decimal	15584711
CIE Lab	84.89, 10.26, 7.12
CIE LCh	85, 12.489, 34.749
Yxy	65.7937, 0.3421, 0.3356
Android (android.graphics.Color)	4293774791 (0xFFEDCDC7)
YUV	213.8840, -7.3378, 20.2727
Hunter-Lab	81.1115, 5.6436, 10.5830

# Details

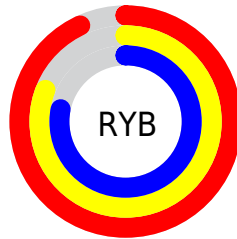
The HunterLab color **81.1115, 5.6436, 10.5830** is a light color, and the websafe version is hex **FFCCCC**. A complement of this color would be **86.8370, -13.3888, -1.4306**, and the grayscale version is **81.9784, -4.3742, 4.4540**.

A 20% lighter version of the original color is **100.0000, -5.3358, 5.4332**, and **58.3106, 5.8128, 8.7945** is the 20% darker color. If you saturate the color by 10%, you get **74.7200, 12.7003, 13.9590**, and if you desaturate by 10%, it is **87.8326, -1.0444, 7.1205**.

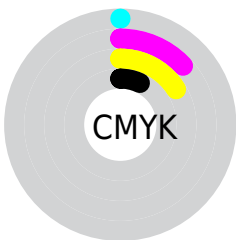
# Distribution



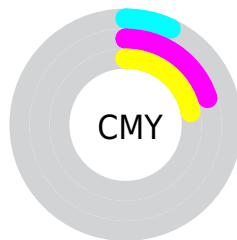
- Red (93%)
- Green (80%)
- Blue (78%)



- Red (93%)
- Yellow (81%)
- Blue (78%)



- Cyan (0%)
- Magenta (13%)
- Yellow (16%)
- Black (7%)



- Cyan (7%)
- Magenta (20%)
- Yellow (22%)

# Brightness & Saturation Gradients

These gradients show how the HunterLab color 81.1115, 5.6436, 10.5830 changes by changing the brightness by 10 percent. The first figure shows a shift by +10% for each color and the second figure -10%.

Similar to the brightness gradients but the following saturation gradients show a change of the HunterLab color 81.1115, 5.6436, 10.5830 by changing the saturation by 10% instead.



81.1115, 5.6436,  
10.5830

81.1115, 5.6436,  
10.5830

211.1016, 2.2926,  
20.1436

69.3577, 5.7862,  
9.6040

106.3909, 5.1926,  
12.5905

58.2323, 5.8719,  
8.6372

119.8611, 4.8971,  
13.6180

47.7750, 5.8915,  
7.6815

133.8561, 4.5583,  
14.6625

38.0315, 5.8366,  
6.7334

148.3571, 4.1786,  
15.7241

29.0587, 5.6955,  
5.7871

163.3469, 3.7604,  
16.8030

20.9294, 5.4521,  
4.8325

178.8101, 3.3056,

13.7424, 5.0826,

17.8992

3.8510

194.7326, 2.8158,  
19.0127

■ 7.3585, 5.6836,  
4.4105

0.0000, NaN, NaN

■ 81.1115, 5.6436,  
10.5830

■ 81.1115, 5.6436,  
10.5830

■ 74.7200, 12.7003,  
13.9590

■ 87.8326, -1.0444,  
7.1205

■ 68.7047, 20.1475,  
17.2006

■ 94.8353, -7.3880,  
3.5959

■ 63.1303, 27.9614,  
20.2423

■ 98.3589, -11.0926,  
3.3852

■ 58.0710, 36.0565,  
22.9879

■ 53.6110, 44.2467,  
25.3083

■ 49.8382, 52.2112,  
27.0500

■ 46.8321, 59.4881,  
28.0682

■ 44.6430, 65.5336,  
28.2976

■ 43.9954, 67.4499,  
28.2906

# Harmonies

## Analogous

The Analogous color harmony consists of three colors that are next to each other on the color wheel.



81.1133, 7.8246, 5.3434



81.1115, 5.6436, 10.5830



81.1133, 0.7875, 13.9680

# Triad

The Triadic color harmony groups three colors that are evenly spaced from another and form a triangle on the color wheel.



81.1133, 5.6411, 10.5843



81.1133, -14.7796, 9.0806



81.1133, -3.3484, -7.6479

# Complementary

The Complementary color scheme is a pair of colors which are on the opposite of each other on the color wheel.



81.1115, 5.6436, 10.5830



86.8370, -13.3888, -1.4306

# Split Complementary

Split-complementary colors differ from the complementary color scheme. The scheme consists of three colors, the original color and two neighbors of the complement color.



81.1133, -9.3283, -6.4623



81.1115, 5.6436, 10.5830



81.1133, -15.8129, 3.4759

# Square

The Square scheme is like the rectangle color scheme, but the four colors are evenly spaced on the color wheel.



81.1133, 5.6411, 10.5843



81.1133, -10.9802, 13.1463



81.1133, -13.8460, -2.2800



81.1133, 2.5367, -5.4093



# Rectangle

The Rectangle color scheme consists of four colors that form a rectangle on the color wheel.



81.1115, 5.6436, 10.5830



81.1133, -3.2444, 14.8626



81.1133, -13.8460, -2.2800



81.1133, -5.4146, -7.6381

# Sweetspot

The Sweet Spot groups the original color and five complimentary colors.



81.1133, 5.6411, 10.5843



96.2011, -1.8499, 7.3519



80.3982, 14.3073, -6.1255



44.2628, -0.6258, 3.5255

0.0000, NaN, NaN



46.2646, -2.4686, 2.5136



# Same Dimension

The Same Dimension uses a secret algorithm to generate beautiful new colors.



81.1133, 5.6411, 10.5843



85.9886, 8.4190, 12.6289



86.7635, -4.1008, 16.4674



39.2916, 0.5545, 3.8216



32.6947, 49.2333, 21.0082



9.7753, 11.9112, 6.2320

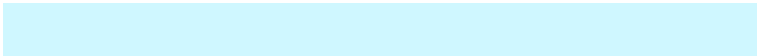


# Inverse Universe

The Inverse Universe completely reimagines the original color for something new.



86.8370, -13.3888, -1.4306



93.3558, -16.1020, -2.8416



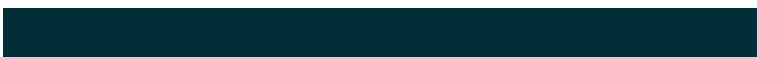
80.9287, -3.8636, -8.8983



40.8569, -4.6413, 0.5377



50.9298, -20.2723, -19.8957



14.6481, -6.1721, -4.9851



# Previews

## White Background



This preview shows how the HunterLab color 81.1115, 5.6436, 10.5830 looks on a white background.

## Color Contrast Check

Large Text (above 18pt) WCAG AA × Fail

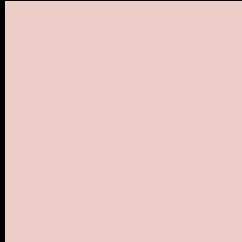
Any Text WCAG AA × Fail

Large Text (above 18pt) WCAG AAA × Fail

Any Text WCAG AAA × Fail



# Black Background



This preview shows how the HunterLab color 81.1115, 5.6436, 10.5830 looks on a black background.

## Color Contrast Check

Large Text (above 18pt) WCAG AA ✓ Pass

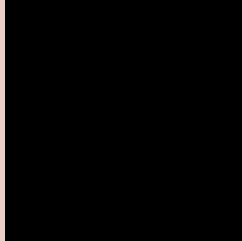
Any Text WCAG AA ✓ Pass

Large Text (above 18pt) WCAG AAA ✓ Pass

Any Text WCAG AAA ✓ Pass

If you want to check with other color combinations, try the [Color Contrast Checker](#).

## HunterLab 81.1115, 5.6436, 10.5830 Background



This preview shows how black text looks on a background with the HunterLab color 81.1115, 5.6436, 10.5830.



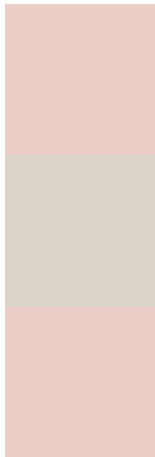
This preview shows how white text looks on a background with the HunterLab color 81.1115, 5.6436,



# Color Blindness Simulation

Color vision deficiency is a very complex topic, and I could not describe the different causes any better than Wikipedia does, so if you want to learn more, you should check out their [article about color blindness](#).

## Dichromacy



### Original Color

81.1115, 5.6436, 10.5830

### Protanopia

81.0914, -3.5230, 9.0519

### Deuteranopia

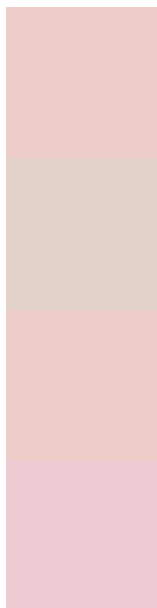
81.1115, 5.6436, 10.5830



## Tritanopia

81.0270, 11.0272, 1.5860

# Trichromacy



## Original Color

81.1115, 5.6436, 10.5830

## Protanomaly

81.1329, -0.3089, 9.6069

## Deuteranomaly

81.1115, 5.6436, 10.5830

## Tritanomaly

80.9890, 8.9651, 4.9457

# Monochromacy



## Original Color

81.1115, 5.6436, 10.5830

## Achromatopsia

82.0026, -4.3755, 4.4554

## Achromatomaly

81.6833, -1.0625, 6.5297

# CSS Examples

## Text

The CSS property to change the color of the text to HunterLab 81.1115, 5.6436, 10.5830 is called "color". The color property can be set on classes, ids or directly on the HTML element.

This example shows how text in the color `rgb(237, 205, 199)` looks like.

```
.text, #text, p{  
  color:rgb(237, 205, 199)  
}
```

If you want to add a text shadow in that color use the text-shadow property, you can generate a text shadow directly with our [CSS Text Shadow Generator](#).

Here you see how black text with a 4 pixel rgb(237, 205, 199) colored shadow looks like.

```
.shadow{ text-shadow: 4px 4px 2px rgb(237, 205, 199) }
```

## Border

The CSS property to change the border of an element to HunterLab 81.1115, 5.6436, 10.5830 is called "border". The border property can be set on classes, ids or directly on the HTML element.

This example shows the color as border, it can be applied via the CSS property "border" or "border-color".

```
.border, #border, table{ border:4px solid rgb(237, 205, 199) }
```



If only the border color should be changed use the property `border-color`.

```
.border{ border-color:rgb(237, 205, 199) }
```

If you want to add a box shadow in that color use:

Here you see how a box with a 4 pixel `rgb(237, 205, 199)` colored shadow looks like.

```
.boxshadow{ -moz-box-shadow:4px 4px 4px  
4px rgb(237, 205, 199); -webkit-box-  
shadow:4px 4px 4px 4px rgb(237, 205, 199);  
box-shadow:4px 4px 4px 4px rgb(237, 205,  
199) }
```

# Background

The CSS property to change the background color of an element to HunterLab 81.1115, 5.6436, 10.5830 is called "background". The background property can be set on classes, ids or directly on the HTML element.

```
.background, #background, body{  
background: rgb(237, 205, 199) }
```

If only the background color should be changed can be used:

```
.background{ background-color: rgb(237,  
205, 199) }
```

This example shows the color as background, it is applied via the CSS property "background".

To optimize and compress your CSS code, you can use our [online CSS compressor and optimizer](#) based on csstidy. If you want to create a linear or radial gradient as background or border, check our [CSS Gradient Generator](#).

Hey! You found this booklet interesting? Support Converting Colors with the new Membership Option!

The pro membership hides all ads, plus gives you double the colors in the color bucket, and more awesome pro features!

**[Learn more, Memberships starting at \\$2.50/m!](#)**

**Follow me  
on Twitter!**

@ConvertingColor