

Converting Colors

HunterLab(81.1193, 4.6195,
6.9202)

Have a look what the booklet for
HunterLab(81.1193, 4.6195, 6.9202)
contains.

HunterLab(81.1193, 4.6195, 6.9202)	3
<i>Conversions</i>	4
<i>Details</i>	6
<i>Harmonies</i>	12
<i>Previews</i>	24
<i>Color Blindness Simulation</i>	28
<i>CSS Examples</i>	31

Color

**HunterLab(81.1193, 4.6195,
6.9202)**

Conversions

Conversions Part 1

Format	Color
Hex	E8CECF
RGB	232, 206, 207
RGB Percent	91%, 81%, 81%
CMY	0.0902, 0.1921, 0.1882
CMYK	0.00, 0.11, 0.11, 0.09
HSL	358°, 36%, 86%
HSV	358°, 11%, 91%
XYZ	66.6125, 65.8034, 68.2219
YIQ	213.8880, 15.1750, 5.8230

Conversions

Conversions Part 2

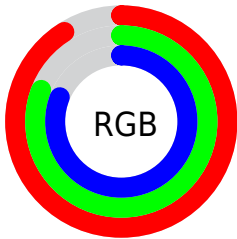
Format	Color
R_{YB}	232, 206, 207
Decimal	15257295
CIE Lab	84.90, 9.23, 2.82
CIE LCh	85, 9.651, 16.991
Yxy	65.8063, 0.3320, 0.3280
Android (android.graphics.Color)	4293447375 (0xFFE8CECF)
YUV	213.8880, -3.3958, 15.8842
Hunter-Lab	81.1193, 4.6195, 6.9202

Details

The HunterLab color $81.1193, 4.6195, 6.9202$ is a light color, and the websafe version is hex `FFCCCC`. A complement of this color would be $87.5249, -12.9861, 2.4897$, and the grayscale version is $81.9654, -4.3735, 4.4533$.

A 20% lighter version of the original color is $100.0000, -5.3358, 5.4332$, and $58.2979, 4.7839, 5.3568$ is the 20% darker color. If you saturate the color by 10%, you get $73.7783, 13.3830, 8.9484$, and if you desaturate by 10%, it is $88.8724, -3.8012, 5.0894$.

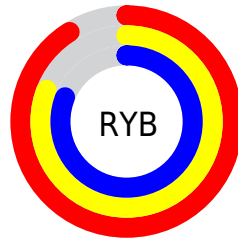
Distribution



Red (91%)

Green (81%)

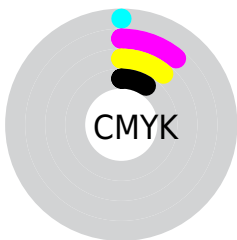
Blue (81%)



Red (91%)

Yellow (81%)

Blue (81%)

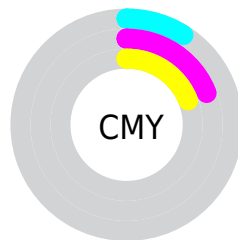


Cyan (0%)

Magenta (11%)

Yellow (11%)

Black (9%)



Cyan (9%)


Magenta (19%)


Yellow (19%)

Brightness & Saturation Gradients


These gradients show how the HunterLab color 81.1193, 4.6195, 6.9202 changes by changing the brightness by 10 percent. The first figure shows a shift by +10% for each color and the second figure -10%.

Similar to the brightness gradients but the following saturation gradients show a change of the HunterLab color 81.1193, 4.6195, 6.9202 by changing the saturation by 10% instead.


 81.1193, 4.6195,
6.9202

 81.1193, 4.6195,
6.9202


211.1123, 0.9130,
14.9648

 69.3651, 4.8097,
6.1499


106.3994, 4.0799,
8.5420

 58.2393, 4.9451,
5.4049


119.8699, 3.7425,
9.3897

 47.7815, 5.0173,
4.6870


133.8653, 3.3632,
10.2616

 38.0375, 5.0182,
3.9965

148.3666, 2.9444,
11.1571

 29.0642, 4.9368,
3.3335

163.3567, 2.4883,
12.0757

 20.9343, 4.7579,
2.6971

178.8202, 1.9966,

 13.7467, 4.4586,

13.0168

2.0844

194.7430, 1.4711,
13.9800

■ 7.3633, 5.0688,
1.9884

0.0000, NaN, NaN

■ 81.1193, 4.6195,
6.9202

■ 81.1193, 4.6195,
6.9202

■ 73.7783, 13.3830,
8.9484

■ 88.8724, -3.8012,
5.0894

■ 66.9202, 22.4907,
11.1881

■ 96.9723, -11.8992,
3.4281

■ 60.6417, 31.8663,
13.6416

■ 97.9265, -12.6258,
2.8401

■ 55.0584, 41.3120,
16.2749

■ 50.3026, 50.4391,
18.9932

■ 46.5080, 58.6293,
21.6192

■ 43.7784, 65.1112,
23.9021

■ 42.1390, 69.2300,
25.5867

■ 41.4433, 71.0198,
26.4154

Harmonies

Analogous

The Analogous color harmony consists of three colors that are next to each other on the color wheel.



81.1211, 4.7890, 2.4289



81.1193, 4.6195, 6.9202



81.1211, 2.0123, 10.5341

Triad

The Triadic color harmony groups three colors that are evenly spaced from another and form a triangle on the color wheel.



81.1211, 4.6172, 6.9215



81.1211, -10.9247, 10.1389



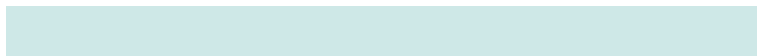
81.1211, -6.3851, -4.5441

Complementary

The Complementary color scheme is a pair of colors which are on the opposite of each other on the color wheel.



81.1193, 4.6195, 6.9202



87.5249, -12.9861, 2.4897

Split Complementary

Split-complementary colors differ from the complementary color scheme. The scheme consists of three colors, the original color and two neighbors of the complement color.



81.1211, -10.4886, -2.2200



81.1193, 4.6195, 6.9202



81.1211, -13.0685, 6.3533

Square

The Square scheme is like the rectangle color scheme, but the four colors are evenly spaced on the color wheel.



81.1211, 4.6172, 6.9215



81.1211, -6.9929, 12.3169



81.1211, -12.9107, 1.8272



81.1211, -1.6379, -4.3701

Rectangle

The Rectangle color scheme consists of four colors that form a rectangle on the color wheel.



81.1193, 4.6195, 6.9202



81.1211, -0.7201, 12.0356



81.1211, -12.9107, 1.8272



81.1211, -7.8833, -4.0236

Sweetspot

The Sweet Spot groups the original color and five complimentary colors.



81.1211, 4.6172, 6.9215



97.3401, -2.5623, 6.0199



81.7990, 8.5063, -4.7834



44.7079, -0.8399, 2.8590

0.0000, NaN, NaN



46.2646, -2.4686, 2.5136

Same Dimension

The Same Dimension uses a secret algorithm to generate beautiful new colors.



81.1211, 4.6172, 6.9215



88.7452, 6.9273, 8.1081



84.6177, -1.6513, 11.1952



37.9169, 1.4324, 3.0288



30.8856, 52.9411, 19.5815



8.4148, 14.4615, 5.0431

Inverse Universe

The Inverse Universe completely reimagines the original color for something new.



81.1211, 4.6172, 6.9215



88.7452, 6.9273, 8.1081



83.8418, -6.8609, -2.4454



37.9169, 1.4324, 3.0288



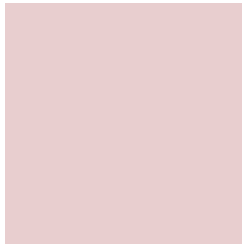
30.8856, 52.9411, 19.5815



8.4148, 14.4615, 5.0431

Previews

White Background



This preview shows how the HunterLab color 81.1193, 4.6195, 6.9202 looks on a white background.

Color Contrast Check

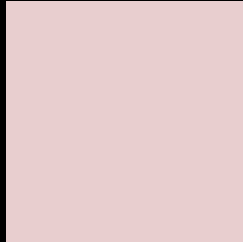
Large Text (above 18pt) WCAG AA × Fail

Any Text WCAG AA × Fail

Large Text (above 18pt) WCAG AAA × Fail

Any Text WCAG AAA × Fail

Black Background



This preview shows how the HunterLab color 81.1193, 4.6195, 6.9202 looks on a black background.

Color Contrast Check

Large Text (above 18pt) WCAG AA ✓ Pass

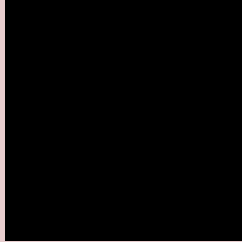
Any Text WCAG AA ✓ Pass

Large Text (above 18pt) WCAG AAA ✓ Pass

Any Text WCAG AAA ✓ Pass

If you want to check with other color combinations, try the [Color Contrast Checker](#).

HunterLab 81.1193, 4.6195, 6.9202 Background



This preview shows how black text looks on a background with the HunterLab color 81.1193, 4.6195, 6.9202.



This preview shows how white text looks on a background with the HunterLab color 81.1193, 4.6195,

Color Blindness Simulation

Color vision deficiency is a very complex topic, and I could not describe the different causes any better than Wikipedia does, so if you want to learn more, you should check out their [article about color blindness](#).

Dichromacy



Original Color

81.1193, 4.6195, 6.9202

Protanopia

81.1422, -2.8677, 5.3969

Deuteranopia

81.0309, 5.8439, 6.8401



Tritanopia

81.1452, 8.5536, 0.6776

Trichromacy



Original Color

81.1193, 4.6195, 6.9202

Protanomaly

81.0765, -0.0259, 5.8462

Deuteranomaly

80.9267, 5.4943, 6.7141

Tritanomaly

81.1742, 6.8185, 3.1809

Monochromacy



Original Color

81.1193, 4.6195, 6.9202

Achromatopsia

82.0026, -4.3755, 4.4554

Achromatomaly

81.6479, -1.0620, 5.5403

CSS Examples

Text

The CSS property to change the color of the text to HunterLab 81.1193, 4.6195, 6.9202 is called "color". The color property can be set on classes, ids or directly on the HTML element.

This example shows how text in the color `rgb(232, 206, 207)` looks like.

```
.text, #text, p{  
    color:rgb(232, 206, 207)  
}
```

If you want to add a text shadow in that color use the text-shadow property, you can generate a text shadow directly with our [CSS Text Shadow Generator](#).

Here you see how black text with a 4 pixel rgb(232, 206, 207) colored shadow looks like.

```
.shadow{ text-shadow: 4px 4px 2px rgb(232, 206, 207) }
```

Border

The CSS property to change the border of an element to HunterLab 81.1193, 4.6195, 6.9202 is called "border". The border property can be set on classes, ids or directly on the HTML element.

This example shows the color as border, it can be applied via the CSS property "border" or "border-color".

```
.border, #border, table{ border:4px solid rgb(232, 206, 207) }
```


If only the border color should be changed use the property `border-color`.

```
.border{ border-color:rgb(232, 206, 207) }
```

If you want to add a box shadow in that color use:

Here you see how a box with a 4 pixel `rgb(232, 206, 207)` colored shadow looks like.

```
.boxshadow{ -moz-box-shadow:4px 4px 4px  
4px rgb(232, 206, 207); -webkit-box-  
shadow:4px 4px 4px 4px rgb(232, 206, 207);  
box-shadow:4px 4px 4px 4px rgb(232, 206,  
207) }
```

Background

The CSS property to change the background color of an element to HunterLab 81.1193, 4.6195, 6.9202 is called "background". The background property can be set on classes, ids or directly on the HTML element.

```
.background, #background, body{  
background: rgb(232, 206, 207) }
```

If only the background color should be changed can be used:

```
.background{ background-color: rgb(232,  
206, 207) }
```

This example shows the color as background, it is applied via the CSS property "background".

To optimize and compress your CSS code, you can use our [online CSS compressor and optimizer](#) based on csstidy. If you want to create a linear or radial gradient as background or border, check our [CSS Gradient Generator](#).

Hey! You found this booklet interesting? Support Converting Colors with the new Membership Option!

The pro membership hides all ads, plus gives you double the colors in the color bucket, and more awesome pro features!

[Learn more, Memberships starting at \\$2.50/m!](#)

**Follow me
on Twitter!**

@ConvertingColor