

Converting Colors

HunterLab(81.2447, -1.4569,
9.0906)

Have a look what the booklet for
HunterLab(81.2447, -1.4569, 9.0906)
contains.

HunterLab(81.2683, -1.3436, 9.2880)	3
<i>Conversions</i>	4
<i>Details</i>	6
<i>Harmonies</i>	12
<i>Previews</i>	24
<i>Color Blindness Simulation</i>	28
<i>CSS Examples</i>	31

Color

**HunterLab(81.2683, -1.3436,
9.2880)**

Conversions

Conversions Part 1

Format	Color
Hex	DFD2CA
RGB	223, 210, 202
RGB Percent	87%, 82%, 79%
CMY	0.1255, 0.1764, 0.2078
CMYK	0.00, 0.06, 0.09, 0.13
HSL	23°, 25%, 83%
HSV	23°, 9%, 87%
XYZ	64.1386, 66.0454, 65.2447
YIQ	212.9750, 10.3160, 0.2680

Conversions

Conversions Part 2

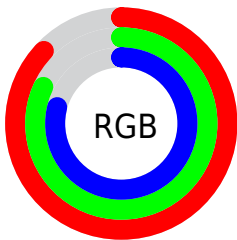
Format	Color
R _Y B	223, 215, 202
Decimal	14668490
CIE Lab	85.02, 3.13, 5.56
CIE LCh	85, 6.380, 60.621
Yxy	66.0483, 0.3282, 0.3380
Android (android.graphics.Color)	4292858570 (0xFFDFD2CA)
YUV	212.9750, -5.4107, 8.7919
Hunter-Lab	81.2683, -1.3436, 9.2880

Details

The HunterLab color $81.2683, -1.3436, 9.2880$ is a light color, and the websafe version is hex `CCCCCC`. A complement of this color would be $81.5377, -7.0134, -0.6438$, and the grayscale version is $81.5814, -4.3530, 4.4325$.

A 20% lighter version of the original color is $100.0000, -5.3358, 5.4332$, and $58.5149, -0.5683, 7.6585$ is the 20% darker color. If you saturate the color by 10%, you get $76.5137, 2.4030, 13.8530$, and if you desaturate by 10%, it is $86.1936, -4.7753, 4.3715$.

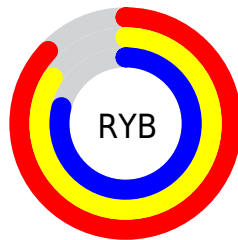
Distribution



Red (87%)

Green (82%)

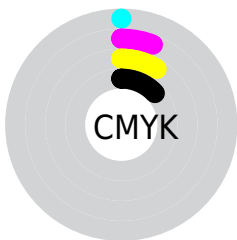
Blue (79%)



Red (87%)

Yellow (84%)

Blue (79%)

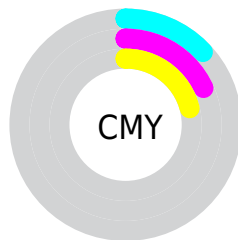


Cyan (0%)

Magenta (6%)

Yellow (9%)

Black (13%)



Cyan (13%)

Magenta (18%)

Yellow (21%)

Brightness & Saturation Gradients

These gradients show how the HunterLab color 81.2683, -1.3436, 9.2880 changes by changing the brightness by 10 percent. The first figure shows a shift by +10% for each color and the second figure -10%.

Similar to the brightness gradients but the following saturation gradients show a change of the HunterLab color 81.2683, -1.3436, 9.2880 by changing the saturation by 10% instead.

81.2683, -1.3436,
9.2880

81.2683, -1.3436,
9.2880

211.3172, -7.1823,
18.2953

69.5065, -0.8674,
8.3855

106.5625, -2.4175,
11.1543

58.3727, -0.4309,
7.5001

120.0396, -3.0063,
12.1162

47.9064, -0.0400,
6.6319

134.0414, -3.6280,
13.0976

38.1533, 0.3008,
5.7789

148.5488, -4.2810,
14.0986

29.1700, 0.5854,
4.9374

163.5449, -4.9641,
15.1191

21.0292, 0.8054,
4.1012

179.0141, -5.6760,

13.8292, 0.9480,

16.1588

3.2575

194.9425, -6.4157,
17.2176

■ 7.4556, 1.4312,
3.4969

0.0000, NaN, NaN

■ 81.2683, -1.3436,
9.2880

■ 81.2683, -1.3436,
9.2880

■ 76.5137, 2.4030,
13.8530

■ 86.1936, -4.7753,
4.3715

■ 71.9429, 6.4998,
18.0082

■ 91.2683, -7.9148,
-0.8543

■ 67.5788, 10.9694,
21.6907

■ 95.9985, -13.4693,
0.4869

■ 63.4453, 15.8283,
24.8270

■ 97.1741, -15.3104,
1.8861

■ 59.5696, 21.0781,
27.3364

■ 55.9811, 26.6958,
29.1365

■ 52.7111, 32.6214,
30.1556

■ 49.7899, 38.7443,
30.3553

■ 47.2384, 44.8666,
29.8467

Harmonies

Analogous

The Analogous color harmony consists of three colors that are next to each other on the color wheel.



81.2701, 0.9412, 7.3061



81.2683, -1.3436, 9.2880



81.2701, -4.4064, 9.9805

Triad

The Triadic color harmony groups three colors that are evenly spaced from another and form a triangle on the color wheel.



81.2701, -1.3458, 9.2893



81.2701, -10.3130, 4.3613



81.2701, -1.2304, -0.6960

Complementary

The Complementary color scheme is a pair of colors which are on the opposite of each other on the color wheel.



81.2683, -1.3436, 9.2880



81.5377, -7.0134, -0.6438

Split Complementary

Split-complementary colors differ from the complementary color scheme. The scheme consists of three colors, the original color and two neighbors of the complement color.



81.2701, -4.2751, -1.5554



81.2683, -1.3436, 9.2880



81.2701, -9.4911, 1.4318

Square

The Square scheme is like the rectangle color scheme, but the four colors are evenly spaced on the color wheel.



81.2701, -1.3458, 9.2893



81.2701, -9.5551, 7.2018



81.2701, -7.2929, -0.7625



81.2701, 1.0085, 1.5440

Rectangle

The Rectangle color scheme consists of four colors that form a rectangle on the color wheel.



81.2683, -1.3436, 9.2880



81.2701, -6.4643, 9.6372



81.2701, -7.2929, -0.7625



81.2701, -2.1951, -1.1597

Sweetspot

The Sweet Spot groups the original color and five complimentary colors.



81.2701, -1.3458, 9.2893



98.2515, -4.1602, 7.1971



79.2791, 5.0385, 0.7075



45.2407, -1.7768, 3.5451

0.0000, NaN, NaN



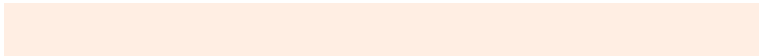
46.2646, -2.4686, 2.5136

Same Dimension

The Same Dimension uses a secret algorithm to generate beautiful new colors.



81.2701, -1.3458, 9.2893



93.6715, -0.8665, 11.7288



84.4064, -6.5747, 12.6451



38.1478, -0.6266, 4.3681



36.3950, 33.9284, 23.0204



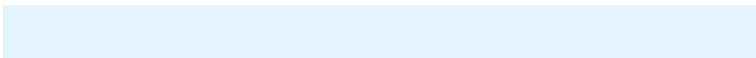
10.4272, 6.8176, 6.5445

Inverse Universe

The Inverse Universe completely reimagines the original color for something new.



81.5377, -7.0134, -0.6438



94.0373, -8.6173, -1.8551



78.3915, -1.7909, -4.5285



38.2738, -3.2962, -0.3106



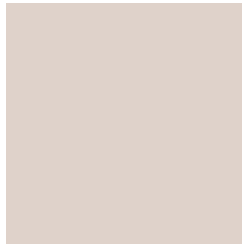
37.4780, -2.2974, -41.8848



10.6998, -1.9303, -9.2068

Previews

White Background



This preview shows how the HunterLab color 81.2683, -1.3436, 9.2880 looks on a white background.

Color Contrast Check

Large Text (above 18pt) WCAG AA × Fail

Any Text WCAG AA × Fail

Large Text (above 18pt) WCAG AAA × Fail

Any Text WCAG AAA × Fail

Black Background



This preview shows how the HunterLab color 81.2683, -1.3436, 9.2880 looks on a black background.

Color Contrast Check

Large Text (above 18pt) WCAG AA ✓ Pass

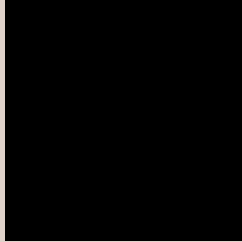
Any Text WCAG AA ✓ Pass

Large Text (above 18pt) WCAG AAA ✓ Pass

Any Text WCAG AAA ✓ Pass

If you want to check with other color combinations, try the [Color Contrast Checker](#).

HunterLab 81.2683, -1.3436, 9.2880 Background



This preview shows how black text looks on a background with the HunterLab color 81.2683, -1.3436, 9.2880.



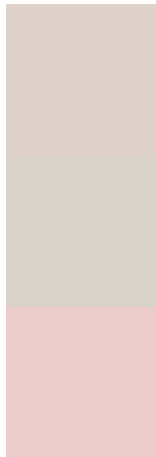
This preview shows how white text looks on a background with the HunterLab color 81.2683, -1.3436, 9.2880.

9.2880.

Color Blindness Simulation

Color vision deficiency is a very complex topic, and I could not describe the different causes any better than Wikipedia does, so if you want to learn more, you should check out their [article about color blindness](#).

Dichromacy



Original Color

81.2683, -1.3436, 9.2880

Protanopia

81.1207, -3.3628, 8.6324

Deuteranopia

81.1217, 5.9101, 8.7958



Tritanopia

81.3155, 4.7647, -0.7128

Trichromacy



Original Color

81.2683, -1.3436, 9.2880

Protanomaly

81.3117, -2.7015, 8.8586

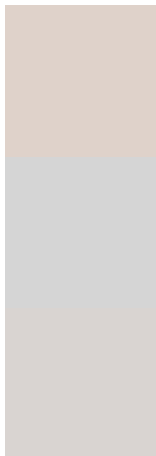
Deuteranomaly

81.1951, 3.1077, 8.8292

Tritanomaly

81.2561, 2.5086, 3.2032

Monochromacy



Original Color

81.2683, -1.3436, 9.2880

Achromatopsia

81.5713, -4.3524, 4.4319

Achromatomaly

81.5120, -3.2234, 6.2944

CSS Examples

Text

The CSS property to change the color of the text to HunterLab 81.2683, -1.3436, 9.2880 is called "color". The color property can be set on classes, ids or directly on the HTML element.

This example shows how text in the color `rgb(223, 210, 202)` looks like.

```
.text, #text, p{  
    color:rgb(223, 210, 202)  
}
```

If you want to add a text shadow in that color use the text-shadow property, you can generate a text shadow directly with our [CSS Text Shadow Generator](#).

Here you see how black text with a 4 pixel rgb(223, 210, 202) colored shadow looks like.

```
.shadow{ text-shadow: 4px 4px 2px rgb(223, 210, 202) }
```

Border

The CSS property to change the border of an element to HunterLab 81.2683, -1.3436, 9.2880 is called "border". The border property can be set on classes, ids or directly on the HTML element.

This example shows the color as border, it can be applied via the CSS property "border" or "border-color".

```
.border, #border, table{ border:4px solid rgb(223, 210, 202) }
```


If only the border color should be changed use the property `border-color`.

```
.border{ border-color:rgb(223, 210, 202) }
```

If you want to add a box shadow in that color use:

Here you see how a box with a 4 pixel `rgb(223, 210, 202)` colored shadow looks like.

```
.boxshadow{ -moz-box-shadow:4px 4px 4px  
4px rgb(223, 210, 202); -webkit-box-  
shadow:4px 4px 4px 4px rgb(223, 210, 202);  
box-shadow:4px 4px 4px 4px rgb(223, 210,  
202) }
```

Background

The CSS property to change the background color of an element to HunterLab 81.2683, -1.3436, 9.2880 is called "background". The background property can be set on classes, ids or directly on the HTML element.

```
.background, #background, body{  
background: rgb(223, 210, 202) }
```

If only the background color should be changed can be used:

```
.background{ background-color: rgb(223,  
210, 202) }
```

This example shows the color as background, it is applied via the CSS property "background".

To optimize and compress your CSS code, you can use our [online CSS compressor and optimizer](#) based on csstidy. If you want to create a linear or radial gradient as background or border, check our [CSS Gradient Generator](#).

Hey! You found this booklet interesting? Support Converting Colors with the new Membership Option!

The pro membership hides all ads, plus gives you double the colors in the color bucket, and more awesome pro features!

[Learn more, Memberships starting at \\$2.50/m!](#)

**Follow me
on Twitter!**

@ConvertingColor