

Converting Colors

HunterLab(81.2773, 5.7434,
7.7698)

Have a look what the booklet for
HunterLab(81.2773, 5.7434, 7.7698)
contains.

HunterLab(81.4009, 5.5064, 7.7238)	3
<i>Conversions</i>	4
<i>Details</i>	6
<i>Harmonies</i>	12
<i>Previews</i>	24
<i>Color Blindness Simulation</i>	28
<i>CSS Examples</i>	31

Color

**HunterLab(81.4009, 5.5064,
7.7238)**

Conversions

Conversions Part 1

Format	Color
Hex	EBCECE
RGB	235, 206, 206
RGB Percent	92%, 81%, 81%
CMY	0.0784, 0.1921, 0.1922
CMYK	0.00, 0.12, 0.12, 0.08
HSL	0°, 42%, 86%
HSV	0°, 12%, 92%
XYZ	67.4729, 66.2611, 67.6261
YIQ	214.6710, 17.2840, 6.1480

Conversions

Conversions Part 2

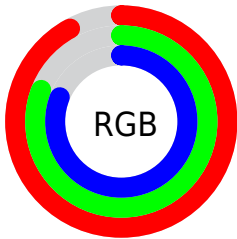
Format	Color
R _Y B	235, 206, 206
Decimal	15453902
CIE Lab	85.13, 10.13, 3.72
CIE LCh	85, 10.790, 20.179
Yxy	66.2640, 0.3351, 0.3291
Android (android.graphics.Color)	4293643982 (0xFFEBCECE)
YUV	214.6710, -4.2748, 17.8285
Hunter-Lab	81.4009, 5.5064, 7.7238

Details

The HunterLab color $81.4009, 5.5064, 7.7238$ is a light color, and the websafe version is hex FFCCCC . A complement of this color would be $88.6201, -13.7736, 1.7812$, and the grayscale version is $82.3065, -4.3917, 4.4719$.

A 20% lighter version of the original color is $100.0000, -5.3358, 5.4332$, and $58.5723, 5.6429, 6.1210$ is the 20% darker color. If you saturate the color by 10%, you get $73.9765, 14.3253, 10.1467$, and if you desaturate by 10%, it is $89.2551, -2.9393, 5.4608$.

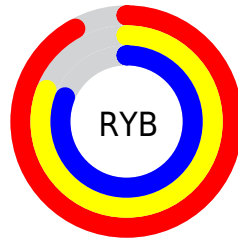
Distribution



Red (92%)

Green (81%)

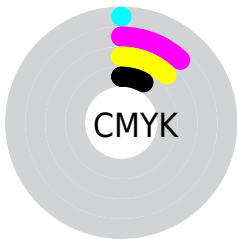
Blue (81%)



Red (92%)

Yellow (81%)

Blue (81%)

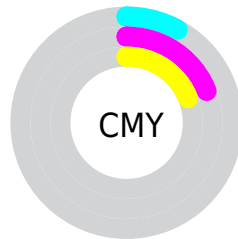


Cyan (0%)

Magenta (12%)

Yellow (12%)

Black (8%)



Cyan (8%)

Magenta (19%)

Yellow (19%)

Brightness & Saturation Gradients

These gradients show how the HunterLab color 81.4009, 5.5064, 7.7238 changes by changing the brightness by 10 percent. The first figure shows a shift by +10% for each color and the second figure -10%.

Similar to the brightness gradients but the following saturation gradients show a change of the HunterLab color 81.4009, 5.5064, 7.7238 by changing the saturation by 10% instead.

81.4009, 5.5064,
7.7238

81.4009, 5.5064,
7.7238

211.4995, 2.1008,
16.0871

69.6324, 5.6566,
6.9100

106.7076, 5.0417,
9.4264

58.4915, 5.7502,
6.1187

120.1906, 4.7397,
10.3119

48.0176, 5.7783,
5.3514

134.1981, 4.3946,
11.2200

38.2564, 5.7324,
4.6077

148.7109, 4.0090,
12.1504

29.2643, 5.6012,
3.8864

163.7123, 3.5850,
13.1028

21.1138, 5.3688,
3.1849

179.1867, 3.1245,

13.9027, 5.0116,

14.0766

2.4975

195.1200, 2.6293,
15.0715

7.5367, 5.4531,
2.4575

0.0000, NaN, NaN

81.4009, 5.5064,
7.7238

81.4009, 5.5064,
7.7238

73.9765, 14.3253,
10.1467

89.2551, -2.9393,
5.4608

67.0567, 23.5189,
12.7294

97.4702, -11.0344,
3.3392

60.7436, 33.0047,
15.4535

98.1847, -11.7094,
3.1659

55.1585, 42.5684,
18.2559

■ 50.4387, 51.7905,
21.0057

■ 46.7199, 60.0135,
23.4924

■ 44.1006, 66.4383,
25.4553

■ 42.5907, 70.4237,
26.6804

■ 42.0274, 71.9689,
27.1570

Harmonies

Analogous

The Analogous color harmony consists of three colors that are next to each other on the color wheel.



81.4027, 6.0063, 2.7493



81.4009, 5.5064, 7.7238



81.4027, 2.3246, 11.5737

Triad

The Triadic color harmony groups three colors that are evenly spaced from another and form a triangle on the color wheel.



81.4027, 5.5040, 7.7251



81.4027, -12.0761, 10.4344



81.4027, -6.0897, -5.7804

Complementary

The Complementary color scheme is a pair of colors which are on the opposite of each other on the color wheel.



81.4009, 5.5064, 7.7238



88.6201, -13.7736, 1.7812

Split Complementary

Split-complementary colors differ from the complementary color scheme. The scheme consists of three colors, the original color and two neighbors of the complement color.



81.4027, -10.8120, -3.4241



81.4009, 5.5064, 7.7238



81.4027, -14.2090, 6.0775

Square

The Square scheme is like the rectangle color scheme, but the four colors are evenly spaced on the color wheel.



81.4027, 5.5040, 7.7251



81.4027, -7.8556, 13.0667



81.4027, -13.7523, 0.9931



81.4027, -0.7796, -5.2686

Rectangle

The Rectangle color scheme consists of four colors that form a rectangle on the color wheel.



81.4009, 5.5064, 7.7238



81.4027, -0.8410, 13.0852



81.4027, -13.7523, 0.9931



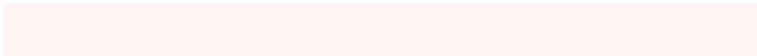
81.4027, -7.7962, -5.2920

Sweetspot

The Sweet Spot groups the original color and five complimentary colors.



81.4027, 5.5040, 7.7251



96.4495, -1.6986, 6.3965



82.3432, 10.5224, -5.6697



44.3164, -0.4662, 3.0445

0.0000, NaN, NaN



46.2646, -2.4686, 2.5136

Same Dimension

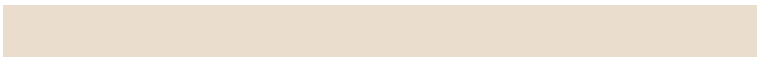
The Same Dimension uses a secret algorithm to generate beautiful new colors.



81.4027, 5.5040, 7.7251



87.0382, 8.6354, 9.1822



85.7721, -2.0791, 12.4514



38.8000, 1.4100, 3.2752



31.3534, 53.6891, 20.2597



8.7866, 15.0425, 5.6776

Inverse Universe

The Inverse Universe completely reimagines the original color for something new.



88.6201, -13.7736, 1.7812



96.6695, -17.1140, 1.2423



84.0061, -6.3999, -3.8210



41.3782, -5.4711, 1.1537



60.3291, -31.9779, -6.3749



16.9058, -8.9613, -1.7859

Previews

White Background



This preview shows how the HunterLab color 81.4009, 5.5064, 7.7238 looks on a white background.

Color Contrast Check

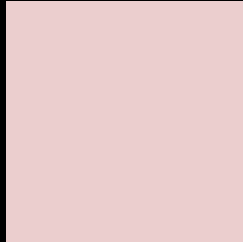
Large Text (above 18pt) WCAG AA × Fail

Any Text WCAG AA × Fail

Large Text (above 18pt) WCAG AAA × Fail

Any Text WCAG AAA × Fail

Black Background



This preview shows how the HunterLab color 81.4009, 5.5064, 7.7238 looks on a black background.

Color Contrast Check

Large Text (above 18pt) WCAG AA ✓ Pass

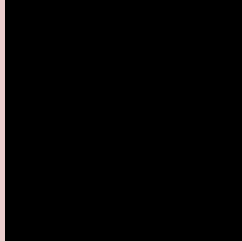
Any Text WCAG AA ✓ Pass

Large Text (above 18pt) WCAG AAA ✓ Pass

Any Text WCAG AAA ✓ Pass

If you want to check with other color combinations, try the [Color Contrast Checker](#).

HunterLab 81.4009, 5.5064, 7.7238 Background



This preview shows how black text looks on a background with the HunterLab color 81.4009, 5.5064, 7.7238.



This preview shows how white text looks on a background with the HunterLab color 81.4009, 5.5064,

7.7238.

Color Blindness Simulation

Color vision deficiency is a very complex topic, and I could not describe the different causes any better than Wikipedia does, so if you want to learn more, you should check out their [article about color blindness](#).

Dichromacy



Original Color

81.4009, 5.5064, 7.7238

Protanopia

81.5120, -3.2234, 6.2944

Deuteranopia

81.5057, 5.8580, 7.8492



Tritanopia

81.4602, 9.5972, 1.0812

Trichromacy



Original Color

81.4009, 5.5064, 7.7238

Protanomaly

81.5442, -0.0405, 6.8577

Deuteranomaly

81.5057, 5.8580, 7.8492

Tritanomaly

81.4873, 7.8625, 3.5725

Monochromacy



Original Color

81.4009, 5.5064, 7.7238

Achromatopsia

82.4344, -4.3985, 4.4788

Achromatomaly

82.0792, -1.0824, 5.5646

CSS Examples

Text

The CSS property to change the color of the text to HunterLab 81.4009, 5.5064, 7.7238 is called "color". The color property can be set on classes, ids or directly on the HTML element.

This example shows how text in the color `rgb(235, 206, 206)` looks like.

```
.text, #text, p{  
    color:rgb(235, 206, 206)  
}
```

If you want to add a text shadow in that color use the text-shadow property, you can generate a text shadow directly with our [CSS Text Shadow Generator](#).

Here you see how black text with a 4 pixel rgb(235, 206, 206) colored shadow looks like.

```
.shadow{ text-shadow: 4px 4px 2px rgb(235, 206, 206) }
```

Border

The CSS property to change the border of an element to HunterLab 81.4009, 5.5064, 7.7238 is called "border".

The border property can be set on classes, ids or directly on the HTML element.

This example shows the color as border, it can be applied via the CSS property "border" or "border-color".

```
.border, #border, table{ border:4px solid rgb(235, 206, 206) }
```


If only the border color should be changed use the property border-color.

```
.border{ border-color:rgb(235, 206, 206) }
```

If you want to add a box shadow in that color use:

Here you see how a box with a 4 pixel rgb(235, 206, 206) colored shadow looks like.

```
.boxshadow{ -moz-box-shadow:4px 4px 4px  
4px rgb(235, 206, 206); -webkit-box-  
shadow:4px 4px 4px 4px rgb(235, 206, 206);  
box-shadow:4px 4px 4px 4px rgb(235, 206,  
206) }
```

Background

The CSS property to change the background color of an element to HunterLab 81.4009, 5.5064, 7.7238 is called "background". The background property can be set on classes, ids or directly on the HTML element.

```
.background, #background, body{  
background: rgb(235, 206, 206) }
```

If only the background color should be changed can be used:

```
.background{ background-color: rgb(235,  
206, 206) }
```

This example shows the color as background, it is applied via the CSS property "background".

To optimize and compress your CSS code, you can use our [online CSS compressor and optimizer](#) based on csstidy. If you want to create a linear or radial gradient as background or border, check our [CSS Gradient Generator](#).

Hey! You found this booklet interesting? Support Converting Colors with the new Membership Option!

The pro membership hides all ads, plus gives you double the colors in the color bucket, and more awesome pro features!

[Learn more, Memberships starting at \\$2.50/m!](#)

**Follow me
on Twitter!**

@ConvertingColor