

Converting Colors

HunterLab(81.4568, 0.1435,
12.2618)

Have a look what the booklet for
HunterLab(81.4568, 0.1435,
12.2618) contains.

HunterLab(81.3907, 0.2891, 12.1141)	3
<i>Conversions</i>	4
<i>Details</i>	6
<i>Harmonies</i>	12
<i>Previews</i>	24
<i>Color Blindness Simulation</i>	28
<i>CSS Examples</i>	31

Color

**HunterLab(81.3907, 0.2891,
12.1141)**

Conversions

Conversions Part 1

Format	Color
Hex	E5D1C4
RGB	229, 209, 196
RGB Percent	90%, 82%, 77%
CMY	0.1020, 0.1804, 0.2314
CMYK	0.00, 0.09, 0.14, 0.10
HSL	24°, 39%, 83%
HSV	24°, 14%, 90%
XYZ	65.0774, 66.2445, 61.5810
YIQ	213.4980, 16.0930, 0.1970

Conversions

Conversions Part 2

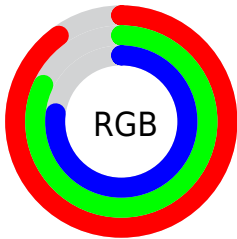
Format	Color
R _Y B	229, 217, 196
Decimal	15061444
CIE Lab	85.12, 4.82, 8.95
CIE LCh	85, 10.168, 61.689
Yxy	66.2474, 0.3374, 0.3434
Android (android.graphics.Color)	4293251524 (0xFFE5D1C4)
YUV	213.4980, -8.6265, 13.5953
Hunter-Lab	81.3907, 0.2891, 12.1141

Details

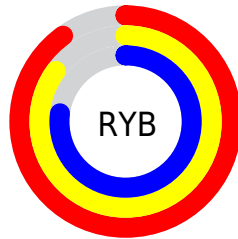
The HunterLab color $81.3907, 0.2891, 12.1141$ is a light color, and the websafe version is hex `CCCCCC`. A complement of this color would be $81.5495, -8.1773, -3.7880$, and the grayscale version is $81.8187, -4.3656, 4.4454$.

A 20% lighter version of the original color is $99.9359, -5.6870, 6.3478$, and $58.5491, 0.7001, 10.1749$ is the 20% darker color. If you saturate the color by 10%, you get $76.6600, 4.1794, 16.6938$, and if you desaturate by 10%, it is $86.3015, -3.2606, 7.1262$.

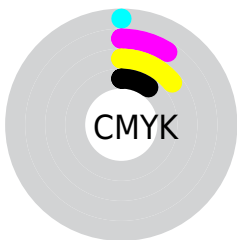
Distribution



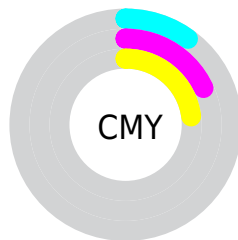
- Red (90%)
- Green (82%)
- Blue (77%)



- Red (90%)
- Yellow (85%)
- Blue (77%)



- Cyan (0%)
- Magenta (9%)
- Yellow (14%)
- Black (10%)



- Cyan (10%)
- Magenta (18%)
- Yellow (23%)

Brightness & Saturation Gradients

These gradients show how the HunterLab color 81.3907, 0.2891, 12.1141 changes by changing the brightness by 10 percent. The first figure shows a shift by +10% for each color and the second figure -10%.

Similar to the brightness gradients but the following saturation gradients show a change of the HunterLab color 81.3907, 0.2891, 12.1141 by changing the saturation by 10% instead.

81.3907, 0.2891,
12.1141

81.3907, 0.2891,
12.1141

211.4855, -4.9580,
22.3388

69.6227, 0.6856,
11.0431

106.6965, -0.6364,
14.2911

58.4823, 1.0382,
9.9783

120.1790, -1.1554,
15.3976

48.0091, 1.3402,
8.9173

134.1860, -1.7098,
16.5177

38.2485, 1.5859,
7.8549

148.6985, -2.2978,
17.6520

29.2571, 1.7679,
6.7824

163.6994, -2.9180,
18.8010

21.1072, 1.8755,
5.6859

179.1734, -3.5688,

13.8971, 1.8928,

19.9650

4.5390

195.1064, -4.2492,
21.1442

■ 7.5305, 2.3881,
5.2714

0.0000, NaN, NaN

■ 81.3907, 0.2891,
12.1141

■ 81.3907, 0.2891,
12.1141

■ 76.6600, 4.1794,
16.6938

■ 86.3015, -3.2606,
7.1262

■ 72.1233, 8.4454,
20.8000

■ 91.3701, -6.4926,
1.7791

■ 67.8045, 13.1072,
24.3628

■ 96.2515, -11.2771,
0.8348

■ 63.7284, 18.1765,
27.3031

■ 97.6720, -13.5316,
2.5182

■ 59.9224, 23.6465,
29.5376

■ 56.4161, 29.4813,
30.9878

■ 53.2395, 35.6030,
31.5970

■ 50.4201, 41.8774,
31.3619

■ 49.0015, 45.3499,
30.9884

Harmonies

Analogous

The Analogous color harmony consists of three colors that are next to each other on the color wheel.



81.3925, 4.0401, 9.1131



81.3907, 0.2891, 12.1141



81.3925, -4.6319, 13.0941

Triad

The Triadic color harmony groups three colors that are evenly spaced from another and form a triangle on the color wheel.



81.3925, 0.2867, 12.1153



81.3925, -13.7834, 4.1589



81.3925, 0.7917, -3.7865

Complementary

The Complementary color scheme is a pair of colors which are on the opposite of each other on the color wheel.



81.3907, 0.2891, 12.1141



81.5495, -8.1773, -3.7880

Split Complementary

Split-complementary colors differ from the complementary color scheme. The scheme consists of three colors, the original color and two neighbors of the complement color.



81.3925, -4.0622, -5.3046



81.3907, 0.2891, 12.1141



81.3925, -12.4082, -0.5482

Square

The Square scheme is like the rectangle color scheme, but the four colors are evenly spaced on the color wheel.



81.3925, 0.2867, 12.1153



81.3925, -12.6816, 8.6707



81.3925, -8.8798, -4.0856



81.3925, 4.3366, -0.0511

Rectangle

The Rectangle color scheme consists of four colors that form a rectangle on the color wheel.



81.3907, 0.2891, 12.1141



81.3925, -7.8880, 12.5180



81.3925, -8.8798, -4.0856



81.3925, -0.7449, -4.5829

Sweetspot

The Sweet Spot groups the original color and five complimentary colors.



81.3925, 0.2867, 12.1153



97.7140, -3.8311, 7.8243



78.1759, 10.4516, -1.0973



45.0095, -1.6386, 3.8246

0.0000, NaN, NaN



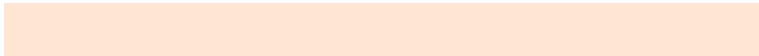
46.2646, -2.4686, 2.5136

Same Dimension

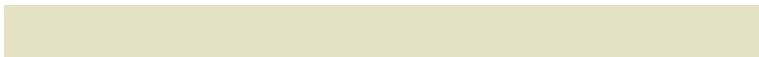
The Same Dimension uses a secret algorithm to generate beautiful new colors.



81.3925, 0.2867, 12.1153



90.4913, 1.4673, 15.1268



86.3573, -7.9996, 17.2167



39.1089, -0.7055, 4.5229



37.3462, 33.5178, 23.5994



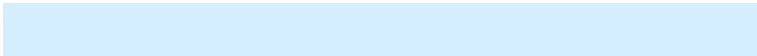
10.9890, 7.0372, 6.8945

Inverse Universe

The Inverse Universe completely reimagines the original color for something new.



81.5495, -8.1773, -3.7880



90.7005, -9.8437, -6.1272



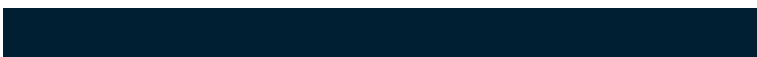
76.5721, 0.1048, -10.2134



39.1574, -3.3121, -0.3742



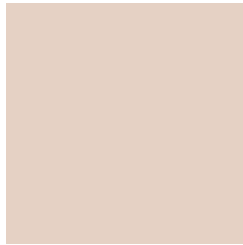
37.4073, -1.2082, -44.1477



11.0177, -1.7030, -10.0949

Previews

White Background



This preview shows how the HunterLab color 81.3907, 0.2891, 12.1141 looks on a white background.

Color Contrast Check

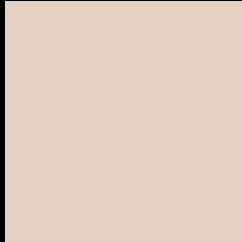
Large Text (above 18pt) WCAG AA × Fail

Any Text WCAG AA × Fail

Large Text (above 18pt) WCAG AAA × Fail

Any Text WCAG AAA × Fail

Black Background



This preview shows how the HunterLab color 81.3907, 0.2891, 12.1141 looks on a black background.

Color Contrast Check

Large Text (above 18pt) WCAG AA ✓ Pass

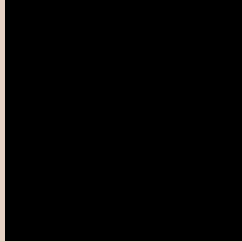
Any Text WCAG AA ✓ Pass

Large Text (above 18pt) WCAG AAA ✓ Pass

Any Text WCAG AAA ✓ Pass

If you want to check with other color combinations, try the [Color Contrast Checker](#).

HunterLab 81.3907, 0.2891, 12.1141 Background



This preview shows how black text looks on a background with the HunterLab color 81.3907, 0.2891, 12.1141.



This preview shows how white text looks on a background with the HunterLab color 81.3907, 0.2891,

Color Blindness Simulation

Color vision deficiency is a very complex topic, and I could not describe the different causes any better than Wikipedia does, so if you want to learn more, you should check out their [article about color blindness](#).

Dichromacy



Original Color

81.3907, 0.2891, 12.1141

Protanopia

81.4738, -4.0017, 11.2546

Deuteranopia

81.2678, 6.0542, 11.6449



Tritanopia

81.2643, 7.5059, 0.2970

Trichromacy



Original Color

81.3907, 0.2891, 12.1141

Protanomaly

81.4296, -2.6389, 11.6689

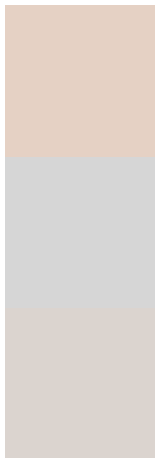
Deuteranomaly

81.1394, 4.1033, 11.4706

Tritanomaly

81.1696, 5.0949, 4.6080

Monochromacy



Original Color

81.3907, 0.2891, 12.1141

Achromatopsia

82.0026, -4.3755, 4.4554

Achromatomaly

81.6407, -2.8986, 7.3854

CSS Examples

Text

The CSS property to change the color of the text to HunterLab 81.3907, 0.2891, 12.1141 is called "color". The color property can be set on classes, ids or directly on the HTML element.

This example shows how text in the color `rgb(229, 209, 196)` looks like.

```
.text, #text, p{  
    color:rgb(229, 209, 196)  
}
```

If you want to add a text shadow in that color use the text-shadow property, you can generate a text shadow directly with our [CSS Text Shadow Generator](#).

Here you see how black text with a 4 pixel rgb(229, 209, 196) colored shadow looks like.

```
.shadow{ text-shadow: 4px 4px 2px rgb(229, 209, 196) }
```

Border

The CSS property to change the border of an element to HunterLab 81.3907, 0.2891, 12.1141 is called "border". The border property can be set on classes, ids or directly on the HTML element.

This example shows the color as border, it can be applied via the CSS property "border" or "border-color".

```
.border, #border, table{ border:4px solid rgb(229, 209, 196) }
```


If only the border color should be changed use the property `border-color`.

```
.border{ border-color:rgb(229, 209, 196) }
```

If you want to add a box shadow in that color use:

Here you see how a box with a 4 pixel `rgb(229, 209, 196)` colored shadow looks like.

```
.boxshadow{ -moz-box-shadow:4px 4px 4px 4px rgb(229, 209, 196); -webkit-box-shadow:4px 4px 4px 4px rgb(229, 209, 196); box-shadow:4px 4px 4px 4px rgb(229, 209, 196) }
```

Background

The CSS property to change the background color of an element to HunterLab 81.3907, 0.2891, 12.1141 is called "background". The background property can be set on classes, ids or directly on the HTML element.

```
.background, #background, body{  
background: rgb(229, 209, 196) }
```

If only the background color should be changed can be used:

```
.background{ background-color: rgb(229,  
209, 196) }
```

This example shows the color as background, it is applied via the CSS property "background".

To optimize and compress your CSS code, you can use our [online CSS compressor and optimizer](#) based on csstidy. If you want to create a linear or radial gradient as background or border, check our [CSS Gradient Generator](#).

Hey! You found this booklet interesting? Support Converting Colors with the new Membership Option!

The pro membership hides all ads, plus gives you double the colors in the color bucket, and more awesome pro features!

[Learn more, Memberships starting at \\$2.50/m!](#)

**Follow me
on Twitter!**

@ConvertingColor