

Converting Colors

HunterLab(81.5106, 2.8786,
7.3379)

Have a look what the booklet for
HunterLab(81.5106, 2.8786, 7.3379)
contains.

HunterLab(81.5106, 2.8786, 7.3379)	3
<i>Conversions</i>	4
<i>Details</i>	6
<i>Harmonies</i>	12
<i>Previews</i>	24
<i>Color Blindness Simulation</i>	28
<i>CSS Examples</i>	31

Color

**HunterLab(81.5106, 2.8786,
7.3379)**

Conversions

Conversions Part 1

Format	Color
Hex	E6D0CF
RGB	230, 208, 207
RGB Percent	90%, 82%, 81%
CMY	0.0980, 0.1843, 0.1882
CMYK	0.00, 0.10, 0.10, 0.10
HSL	3°, 32%, 86%
HSV	3°, 10%, 90%
XYZ	66.4515, 66.4398, 68.3533
YIQ	214.4640, 13.4330, 4.3530

Conversions

Conversions Part 2

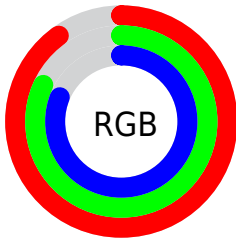
Format	Color
R _Y B	230, 208, 207
Decimal	15126735
CIE Lab	85.22, 7.47, 3.27
CIE LCh	85, 8.158, 23.625
Yxy	66.4427, 0.3302, 0.3301
Android (android.graphics.Color)	4293316815 (0xFFE6D0CF)
YUV	214.4640, -3.6798, 13.6251
Hunter-Lab	81.5106, 2.8786, 7.3379

Details

The HunterLab color $81.5106, 2.8786, 7.3379$ is a light color, and the websafe version is hex $CCCCCC$. A complement of this color would be $86.6117, -11.3574, 1.9230$, and the grayscale version is $82.2158, -4.3868, 4.4669$.

A 20% lighter version of the original color is $100.0000, -5.3358, 5.4332$, and $58.6599, 3.1216, 5.7398$ is the 20% darker color. If you saturate the color by 10%, you get $74.4350, 10.8558, 9.9352$, and if you desaturate by 10%, it is $88.9556, -4.7466, 4.8331$.

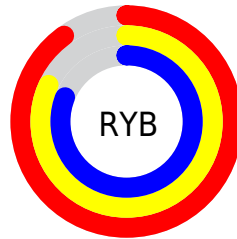
Distribution



Red (90%)

Green (82%)

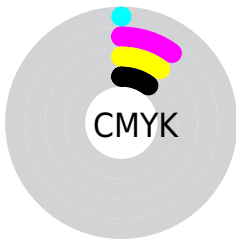
Blue (81%)



Red (90%)

Yellow (82%)

Blue (81%)

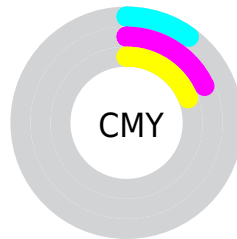


Cyan (0%)

Magenta (10%)

Yellow (10%)

Black (10%)



Cyan (10%)

Magenta (18%)

Yellow (19%)

Brightness & Saturation Gradients

These gradients show how the HunterLab color 81.5106, 2.8786, 7.3379 changes by changing the brightness by 10 percent. The first figure shows a shift by +10% for each color and the second figure -10%.

Similar to the brightness gradients but the following saturation gradients show a change of the HunterLab color 81.5106, 2.8786, 7.3379 by changing the saturation by 10% instead.

81.5106, 2.8786,
7.3379

81.5106, 2.8786,
7.3379

211.6503, -1.4466,
15.5453

69.7366, 3.1517,
6.5455

106.8277, 2.1841,
9.0009

58.5897, 3.3743,
5.7769

120.3155, 1.7737,
9.8679

48.1096, 3.5387,
5.0340

134.3276, 1.3241,
10.7583

38.3417, 3.6377,
4.3165

148.8450, 0.8374,
11.6716

29.3423, 3.6619,
3.6240

163.8507, 0.3154,
12.6074

21.1837, 3.5977,
2.9548

179.3293, -0.2402,

13.9636, 3.4249,

13.5652

2.3048

195.2668, -0.8280,
14.5447

■ 7.6031, 3.8777,
2.1963

0.0000, NaN, NaN

■ 81.5106, 2.8786,
7.3379

■ 81.5106, 2.8786,
7.3379

■ 74.4350, 10.8558,
9.9352

■ 88.9556, -4.7466,
4.8331

■ 67.7880, 19.2049,
12.6151

■ 96.7132, -12.0474,
2.4126

■ 61.6517, 27.8890,
15.3537

■ 97.7564, -13.2308,
2.6251

■ 56.1240, 36.7840,
18.0924

■ 51.3186, 45.6200,
20.7227

■ 47.3559, 53.9320,
23.0753

■ 44.3417, 61.0718,
24.9361

■ 42.3321, 66.3574,
26.1112

■ 41.2809, 69.3378,
26.6510

Harmonies

Analogous

The Analogous color harmony consists of three colors that are next to each other on the color wheel.



81.5124, 3.5002, 3.6132



81.5106, 2.8786, 7.3379



81.5124, 0.2984, 10.1578

Triad

The Triadic color harmony groups three colors that are evenly spaced from another and form a triangle on the color wheel.



81.5124, 2.8763, 7.3392



81.5124, -10.5062, 8.6934



81.5124, -5.2133, -3.2431

Complementary

The Complementary color scheme is a pair of colors which are on the opposite of each other on the color wheel.



81.5106, 2.8786, 7.3379



86.6117, -11.3574, 1.9230

Split Complementary

Split-complementary colors differ from the complementary color scheme. The scheme consists of three colors, the original color and two neighbors of the complement color.



81.5124, -8.9037, -1.7312



81.5106, 2.8786, 7.3379



81.5124, -11.9210, 5.2521

Square

The Square scheme is like the rectangle color scheme, but the four colors are evenly spaced on the color wheel.



81.5124, 2.8763, 7.3392



81.5124, -7.4393, 10.9127



81.5124, -11.3401, 1.4239



81.5124, -1.2215, -2.6179

Rectangle

The Rectangle color scheme consists of four colors that form a rectangle on the color wheel.



81.5106, 2.8786, 7.3379



81.5124, -2.1550, 11.2044



81.5124, -11.3401, 1.4239



81.5124, -6.5293, -2.9657

Sweetspot

The Sweet Spot groups the original color and five complimentary colors.



81.5124, 2.8763, 7.3392



97.4360, -2.7905, 6.2727



81.9267, 7.2304, -3.1615



44.7639, -0.9737, 3.0065

0.0000, NaN, NaN



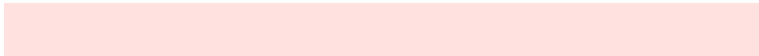
46.2646, -2.4686, 2.5136

Same Dimension

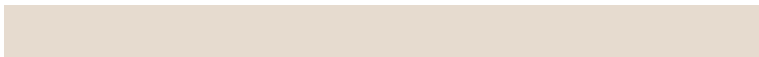
The Same Dimension uses a secret algorithm to generate beautiful new colors.



81.5124, 2.8763, 7.3392



89.9515, 5.0548, 8.8458



84.9301, -2.9829, 11.0705



38.0372, 1.1384, 3.3436



31.1342, 51.9219, 20.0937



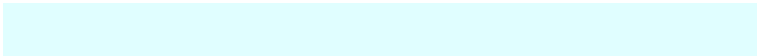
8.6726, 13.4198, 5.5789

Inverse Universe

The Inverse Universe completely reimagines the original color for something new.



86.6117, -11.3574, 1.9230



96.8514, -14.2148, 1.5140



83.0567, -5.6162, -2.3606



40.2775, -5.1143, 0.9643



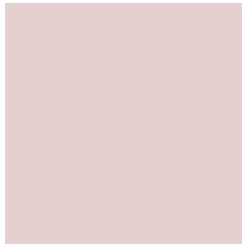
56.7891, -28.3634, -9.7531



15.5459, -7.8418, -2.5029

Previews

White Background



This preview shows how the HunterLab color 81.5106, 2.8786, 7.3379 looks on a white background.

Color Contrast Check

Large Text (above 18pt) WCAG AA × Fail

Any Text WCAG AA × Fail

Large Text (above 18pt) WCAG AAA × Fail

Any Text WCAG AAA × Fail

Black Background



This preview shows how the HunterLab color 81.5106, 2.8786, 7.3379 looks on a black background.

Color Contrast Check

Large Text (above 18pt) WCAG AA ✓ Pass

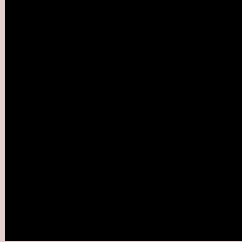
Any Text WCAG AA ✓ Pass

Large Text (above 18pt) WCAG AAA ✓ Pass

Any Text WCAG AAA ✓ Pass

If you want to check with other color combinations, try the [Color Contrast Checker](#).

HunterLab 81.5106, 2.8786, 7.3379 Background



This preview shows how black text looks on a background with the HunterLab color 81.5106, 2.8786, 7.3379.



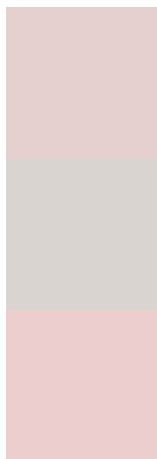
This preview shows how white text looks on a background with the HunterLab color 81.5106, 2.8786,

7.3379.

Color Blindness Simulation

Color vision deficiency is a very complex topic, and I could not describe the different causes any better than Wikipedia does, so if you want to learn more, you should check out their [article about color blindness](#).

Dichromacy



Original Color

81.5106, 2.8786, 7.3379

Protanopia

81.6063, -2.8971, 6.4088

Deuteranopia

81.5356, 6.0180, 7.4214



Tritanopia

81.5919, 7.1491, 0.1838

Trichromacy



Original Color

81.5106, 2.8786, 7.3379

Protanomaly

81.6530, -1.2270, 6.9618

Deuteranomaly

81.6230, 4.7898, 7.4997

Tritanomaly

81.6237, 5.4108, 2.7071

Monochromacy



Original Color

81.5106, 2.8786, 7.3379

Achromatopsia

82.0026, -4.3755, 4.4554

Achromatomaly

81.8570, -1.9088, 5.7686

CSS Examples

Text

The CSS property to change the color of the text to HunterLab 81.5106, 2.8786, 7.3379 is called "color". The color property can be set on classes, ids or directly on the HTML element.

This example shows how text in the color `rgb(230, 208, 207)` looks like.

```
.text, #text, p{  
  color:rgb(230, 208, 207)  
}
```

If you want to add a text shadow in that color use the text-shadow property, you can generate a text shadow directly with our [CSS Text Shadow Generator](#).

Here you see how black text with a 4 pixel rgb(230, 208, 207) colored shadow looks like.

```
.shadow{ text-shadow: 4px 4px 2px rgb(230, 208, 207) }
```

Border

The CSS property to change the border of an element to HunterLab 81.5106, 2.8786, 7.3379 is called "border". The border property can be set on classes, ids or directly on the HTML element.

This example shows the color as border, it can be applied via the CSS property "border" or "border-color".

```
.border, #border, table{ border:4px solid rgb(230, 208, 207) }
```


If only the border color should be changed use the property border-color.

```
.border{ border-color:rgb(230, 208, 207) }
```

If you want to add a box shadow in that color use:

Here you see how a box with a 4 pixel rgb(230, 208, 207) colored shadow looks like.

```
.boxshadow{ -moz-box-shadow:4px 4px 4px  
4px rgb(230, 208, 207); -webkit-box-  
shadow:4px 4px 4px 4px rgb(230, 208, 207);  
box-shadow:4px 4px 4px 4px rgb(230, 208,  
207) }
```

Background

The CSS property to change the background color of an element to HunterLab 81.5106, 2.8786, 7.3379 is called "background". The background property can be set on classes, ids or directly on the HTML element.

```
.background, #background, body{  
background: rgb(230, 208, 207) }
```

If only the background color should be changed can be used:

```
.background{ background-color: rgb(230,  
208, 207) }
```

This example shows the color as background, it is applied via the CSS property "background".

To optimize and compress your CSS code, you can use our [online CSS compressor and optimizer](#) based on csstidy. If you want to create a linear or radial gradient as background or border, check our [CSS Gradient Generator](#).

Hey! You found this booklet interesting? Support Converting Colors with the new Membership Option!

The pro membership hides all ads, plus gives you double the colors in the color bucket, and more awesome pro features!

[Learn more, Memberships starting at \\$2.50/m!](#)

**Follow me
on Twitter!**

@ConvertingColor