

Converting Colors

HunterLab(81.6065, 3.0811,
5.5934)

Have a look what the booklet for
HunterLab(81.6065, 3.0811, 5.5934)
contains.

HunterLab(81.5309, 3.1906, 5.4784)	3
<i>Conversions</i>	4
<i>Details</i>	6
<i>Harmonies</i>	12
<i>Previews</i>	24
<i>Color Blindness Simulation</i>	28
<i>CSS Examples</i>	31

Color

**HunterLab(81.5309, 3.1906,
5.4784)**

Conversions

Conversions Part 1

Format	Color
Hex	E5D0D3
RGB	229, 208, 211
RGB Percent	90%, 82%, 83%
CMY	0.1020, 0.1843, 0.1725
CMYK	0.00, 0.09, 0.08, 0.10
HSL	351°, 29%, 86%
HSV	351°, 9%, 90%
XYZ	66.6268, 66.4729, 70.9469
YIQ	214.6210, 11.5530, 5.3850

Conversions

Conversions Part 2

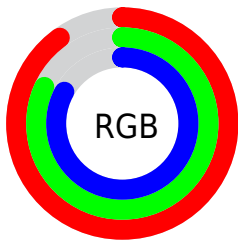
Format	Color
R _Y B	229, 208, 211
Decimal	15061203
CIE Lab	85.24, 7.79, 1.16
CIE LCh	85, 7.878, 8.462
Yxy	66.4758, 0.3265, 0.3258
Android (android.graphics.Color)	4293251283 (0xFFE5D0D3)
YUV	214.6210, -1.7852, 12.6104
Hunter-Lab	81.5309, 3.1906, 5.4784

Details

The HunterLab color $81.5309, 3.1906, 5.4784$ is a light color, and the websafe version is hex `CCCCCC`. A complement of this color would be $86.5686, -11.7738, 3.8556$, and the grayscale version is $82.2762, -4.3901, 4.4702$.

A 20% lighter version of the original color is $100.0000, -5.3358, 5.4332$, and $58.6769, 3.4081, 3.9845$ is the 20% darker color. If you saturate the color by 10%, you get $74.2819, 12.0942, 6.4715$, and if you desaturate by 10%, it is $89.1661, -5.4291, 4.7586$.

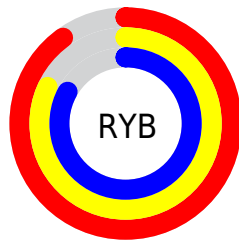
Distribution



Red (90%)

Green (82%)

Blue (83%)



Red (90%)

Yellow (82%)

Blue (83%)

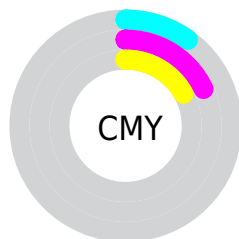


Cyan (0%)

Magenta (9%)

Yellow (8%)

Black (10%)



Cyan (10%)

Magenta (18%)

Yellow (17%)

Brightness & Saturation Gradients

These gradients show how the HunterLab color 81.5309, 3.1906, 5.4784 changes by changing the brightness by 10 percent. The first figure shows a shift by +10% for each color and the second figure -10%.

Similar to the brightness gradients but the following saturation gradients show a change of the HunterLab color 81.5309, 3.1906, 5.4784 by changing the saturation by 10% instead.

81.5309, 3.1906,
5.4784

81.5309, 3.1906,
5.4784

211.6782, -1.0250,
12.9584

69.7558, 3.4491,
4.7852

106.8499, 2.5235,
6.9573

58.6079, 3.6563,
4.1218

120.3386, 2.1261,
7.7382

48.1266, 3.8045,
3.4911

134.3516, 1.6889,
8.5458

38.3575, 3.8862,
2.8946

148.8698, 1.2142,
9.3794

29.3568, 3.8918,
2.3343

163.8763, 0.7039,
10.2381

21.1967, 3.8075,
1.8122

179.3557, 0.1596,

13.9749, 3.6125,

11.1213

1.3308

195.2940, -0.4171,
12.0283

■ 7.6154, 4.0518,
1.0455

0.0000, NaN, NaN

■ 81.5309, 3.1906,
5.4784

■ 81.5309, 3.1906,
5.4784

■ 74.2819, 12.0942,
6.4715

■ 89.1661, -5.4291,
4.7586

■ 67.4831, 21.2782,
7.7805

■ 97.1274, -13.7777,
4.2653

■ 61.2228, 30.6689,
9.4508

■ 97.6720, -13.5315,
2.5182

■ 55.6071, 40.0859,
11.5100

■ 50.7587, 49.1787,
13.9449

■ 46.8066, 57.3852,
16.6677

■ 43.8597, 63.9796,
19.4896

■ 41.9654, 68.2935,
22.1336

■ 41.0083, 70.2549,
24.2770

Harmonies

Analogous

The Analogous color harmony consists of three colors that are next to each other on the color wheel.



81.5327, 2.7314, 1.7782



81.5309, 3.1906, 5.4784



81.5327, 1.5946, 8.7474

Triad

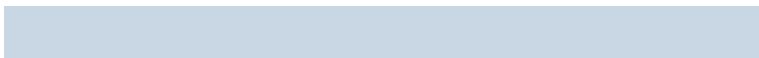
The Triadic color harmony groups three colors that are evenly spaced from another and form a triangle on the color wheel.



81.5327, 3.1884, 5.4798



81.5327, -8.9623, 9.8234



81.5327, -7.0869, -2.4730

Complementary

The Complementary color scheme is a pair of colors which are on the opposite of each other on the color wheel.



81.5309, 3.1906, 5.4784



86.5686, -11.7738, 3.8556

Split Complementary

Split-complementary colors differ from the complementary color scheme. The scheme consists of three colors, the original color and two neighbors of the complement color.



81.5327, -10.1383, -0.1202



81.5309, 3.1906, 5.4784



81.5327, -11.2068, 7.0112

Square

The Square scheme is like the rectangle color scheme, but the four colors are evenly spaced on the color wheel.



81.5327, 3.1884, 5.4798



81.5327, -5.4542, 11.1770



81.5327, -11.6332, 3.3824



81.5327, -3.2494, -2.9302

Rectangle

The Rectangle color scheme consists of four colors that form a rectangle on the color wheel.



81.5309, 3.1906, 5.4784



81.5327, -0.3990, 10.2813



81.5327, -11.6332, 3.3824



81.5327, -8.2365, -1.8724

Sweetspot

The Sweet Spot groups the original color and five complimentary colors.



81.5327, 3.1884, 5.4798



97.3656, -2.4235, 5.6565



81.8024, 5.2664, -3.2302



44.7228, -0.7589, 2.6465

0.0000, NaN, NaN



46.2646, -2.4686, 2.5136

Same Dimension

The Same Dimension uses a secret algorithm to generate beautiful new colors.



81.5327, 3.1884, 5.4798



90.5194, 5.4849, 6.3780



83.6623, -1.1339, 9.2397



37.9491, 1.6058, 2.5687



30.9782, 53.2843, 18.2098



8.4838, 14.7168, 4.0249

Inverse Universe

The Inverse Universe completely reimagines the original color for something new.



81.5327, 3.1884, 5.4798



90.5194, 5.4849, 6.3780



84.3363, -7.5039, -0.2782



37.9491, 1.6058, 2.5687



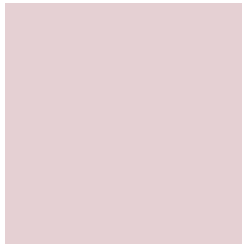
30.9782, 53.2843, 18.2098



8.4838, 14.7168, 4.0249

Previews

White Background



This preview shows how the HunterLab color 81.5309, 3.1906, 5.4784 looks on a white background.

Color Contrast Check

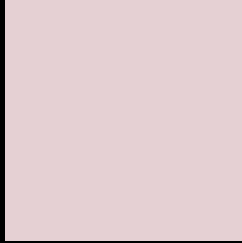
Large Text (above 18pt) WCAG AA × Fail

Any Text WCAG AA × Fail

Large Text (above 18pt) WCAG AAA × Fail

Any Text WCAG AAA × Fail

Black Background



This preview shows how the HunterLab color 81.5309, 3.1906, 5.4784 looks on a black background.

Color Contrast Check

Large Text (above 18pt) WCAG AA ✓ Pass

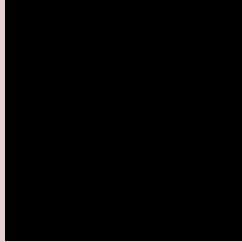
Any Text WCAG AA ✓ Pass

Large Text (above 18pt) WCAG AAA ✓ Pass

Any Text WCAG AAA ✓ Pass

If you want to check with other color combinations, try the [Color Contrast Checker](#).

HunterLab 81.5309, 3.1906, 5.4784 Background



This preview shows how black text looks on a background with the HunterLab color 81.5309, 3.1906, 5.4784.



This preview shows how white text looks on a background with the HunterLab color 81.5309, 3.1906,

5.4784.

Color Blindness Simulation

Color vision deficiency is a very complex topic, and I could not describe the different causes any better than Wikipedia does, so if you want to learn more, you should check out their [article about color blindness](#).

Dichromacy



Original Color

81.5309, 3.1906, 5.4784

Protanopia

81.6350, -2.5518, 4.5385

Deuteranopia

81.4483, 5.9686, 5.4306



Tritanopia

81.4895, 6.8074, 0.0517

Trichromacy



Original Color

81.5309, 3.1906, 5.4784

Protanomaly

81.6787, -0.8945, 5.1005

Deuteranomaly

81.5381, 4.7470, 5.5140

Tritanomaly

81.5540, 5.2406, 2.1231

Monochromacy



Original Color

81.5309, 3.1906, 5.4784

Achromatopsia

82.4344, -4.3985, 4.4788

Achromatomaly

81.9498, -1.4039, 4.4451

CSS Examples

Text

The CSS property to change the color of the text to HunterLab 81.5309, 3.1906, 5.4784 is called "color". The color property can be set on classes, ids or directly on the HTML element.

This example shows how text in the color `rgb(229, 208, 211)` looks like.

```
.text, #text, p{  
    color:rgb(229, 208, 211)  
}
```

If you want to add a text shadow in that color use the text-shadow property, you can generate a text shadow directly with our [CSS Text Shadow Generator](#).

Here you see how black text with a 4 pixel rgb(229, 208, 211) colored shadow looks like.

```
.shadow{ text-shadow: 4px 4px 2px rgb(229, 208, 211) }
```

Border

The CSS property to change the border of an element to HunterLab 81.5309, 3.1906, 5.4784 is called "border".

The border property can be set on classes, ids or directly on the HTML element.

This example shows the color as border, it can be applied via the CSS property "border" or "border-color".

```
.border, #border, table{ border:4px solid rgb(229, 208, 211) }
```


If only the border color should be changed use the property `border-color`.

```
.border{ border-color:rgb(229, 208, 211) }
```

If you want to add a box shadow in that color use:

Here you see how a box with a 4 pixel `rgb(229, 208, 211)` colored shadow looks like.

```
.boxshadow{ -moz-box-shadow:4px 4px 4px  
4px rgb(229, 208, 211); -webkit-box-  
shadow:4px 4px 4px 4px rgb(229, 208, 211);  
box-shadow:4px 4px 4px 4px rgb(229, 208,  
211) }
```

Background

The CSS property to change the background color of an element to HunterLab 81.5309, 3.1906, 5.4784 is called "background". The background property can be set on classes, ids or directly on the HTML element.

```
.background, #background, body{  
background: rgb(229, 208, 211) }
```

If only the background color should be changed can be used:

```
.background{ background-color: rgb(229,  
208, 211) }
```

This example shows the color as background, it is applied via the CSS property "background".

To optimize and compress your CSS code, you can use our [online CSS compressor and optimizer](#) based on csstidy. If you want to create a linear or radial gradient as background or border, check our [CSS Gradient Generator](#).

Hey! You found this booklet interesting? Support Converting Colors with the new Membership Option!

The pro membership hides all ads, plus gives you double the colors in the color bucket, and more awesome pro features!

[Learn more, Memberships starting at \\$2.50/m!](#)

**Follow me
on Twitter!**

@ConvertingColor