

Converting Colors

HunterLab(81.6904, 5.4261,
7.4680)

Have a look what the booklet for
HunterLab(81.6904, 5.4261, 7.4680)
contains.

HunterLab(81.7269, 5.1394, 7.6244)	3
<i>Conversions</i>	4
<i>Details</i>	6
<i>Harmonies</i>	12
<i>Previews</i>	24
<i>Color Blindness Simulation</i>	28
<i>CSS Examples</i>	31

Color

**HunterLab(81.7269, 5.1394,
7.6244)**

Conversions

Conversions Part 1

Format	Color
Hex	EBCFCF
RGB	235, 207, 207
RGB Percent	92%, 81%, 81%
CMY	0.0784, 0.1882, 0.1882
CMYK	0.00, 0.12, 0.12, 0.08
HSL	0°, 41%, 87%
HSV	0°, 12%, 92%
XYZ	67.8363, 66.7929, 68.3485
YIQ	215.3720, 16.6880, 5.9360

Conversions

Conversions Part 2

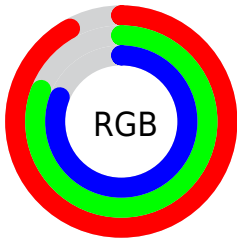
Format	Color
R _Y B	235, 207, 207
Decimal	15454159
CIE Lab	85.40, 9.76, 3.58
CIE LCh	85, 10.401, 20.145
Yxy	66.7958, 0.3342, 0.3291
Android (android.graphics.Color)	4293644239 (0xFFEBCFCF)
YUV	215.3720, -4.1274, 17.2138
Hunter-Lab	81.7269, 5.1394, 7.6244

Details

The HunterLab color $81.7269, 5.1394, 7.6244$ is a light color, and the websafe version is hex FFCCCC . A complement of this color would be $88.7010, -13.4838, 1.8842$, and the grayscale version is $82.6088, -4.4078, 4.4883$.

A 20% lighter version of the original color is $100.0000, -5.3358, 5.4332$, and $58.8779, 5.2905, 6.0250$ is the 20% darker color. If you saturate the color by 10%, you get $74.2829, 13.9418, 10.0405$, and if you desaturate by 10%, it is $89.5976, -3.2906, 5.3678$.

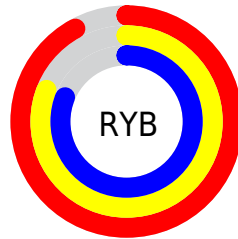
Distribution



Red (92%)

Green (81%)

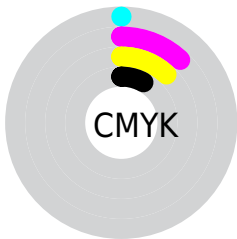
Blue (81%)



Red (92%)

Yellow (81%)

Blue (81%)

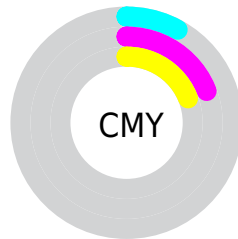


Cyan (0%)

Magenta (12%)

Yellow (12%)

Black (8%)



Cyan (8%)

Magenta (19%)

Yellow (19%)

Brightness & Saturation Gradients

These gradients show how the HunterLab color 81.7269, 5.1394, 7.6244 changes by changing the brightness by 10 percent. The first figure shows a shift by +10% for each color and the second figure -10%.

Similar to the brightness gradients but the following saturation gradients show a change of the HunterLab color 81.7269, 5.1394, 7.6244 by changing the saturation by 10% instead.

81.7269, 5.1394,
7.6244

81.7269, 5.1394,
7.6244

211.9476, 1.5990,
15.9442

69.9419, 5.3077,
6.8166

107.0644, 4.6408,
9.3159

58.7835, 5.4205,
6.0319

120.5618, 4.3229,
10.1962

48.2911, 5.4689,
5.2715

134.5831, 3.9625,
11.0993

38.5100, 5.4447,
4.5354

149.1094, 3.5621,
12.0250

29.4963, 5.3369,
3.8224

164.1237, 3.1237,
12.9727

21.3219, 5.1300,
3.1306


179.6106, 2.6494,

14.0839, 4.8012,

13.9421

2.4545


195.5562, 2.1406,
14.9328


 7.7324, 5.0895,
2.3411


0.0000, NaN, NaN


 81.7269, 5.1394,
7.6244


 81.7269, 5.1394,
7.6244

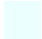
 74.2829, 13.9418,
10.0405


 89.5976, -3.2906,
5.3678

 67.3398, 23.1204,
12.6166

 97.8269, -11.3716,
3.2518

 60.9985, 32.5969,
15.3356

 98.1847, -11.7094,
3.1659

 55.3798, 42.1640,
18.1367

■ 50.6203, 51.4124,
20.8925

■ 46.8564, 59.6940,
23.3956

■ 44.1892, 66.2110,
25.3858

■ 42.6336, 70.3072,
26.6446

■ 42.0275, 71.9687,
27.1571

Harmonies

Analogous

The Analogous color harmony consists of three colors that are next to each other on the color wheel.



81.7287, 5.6178, 2.8207



81.7269, 5.1394, 7.6244



81.7287, 2.0755, 11.3523

Triad

The Triadic color harmony groups three colors that are evenly spaced from another and form a triangle on the color wheel.



81.7287, 5.1370, 7.6257



81.7287, -11.8262, 10.2559



81.7287, -6.0525, -5.3830

Complementary

The Complementary color scheme is a pair of colors which are on the opposite of each other on the color wheel.



81.7269, 5.1394, 7.6244



88.7010, -13.4838, 1.8842

Split Complementary

Split-complementary colors differ from the complementary color scheme. The scheme consists of three colors, the original color and two neighbors of the complement color.



81.7287, -10.6124, -3.1151



81.7269, 5.1394, 7.6244



81.7287, -13.8909, 6.0439

Square

The Square scheme is like the rectangle color scheme, but the four colors are evenly spaced on the color wheel.



81.7287, 5.1370, 7.6257



81.7287, -7.7465, 12.8044



81.7287, -13.4522, 1.1388



81.7287, -0.9281, -4.8944

Rectangle

The Rectangle color scheme consists of four colors that form a rectangle on the color wheel.



81.7269, 5.1394, 7.6244



81.7287, -0.9761, 12.8190



81.7287, -13.4522, 1.1388



81.7287, -7.7000, -4.9127

Sweetspot

The Sweet Spot groups the original color and five complimentary colors.



81.7287, 5.1370, 7.6257



96.4495, -1.6986, 6.3966



82.6359, 9.9839, -5.2982



44.3164, -0.4662, 3.0445

0.0000, NaN, NaN



46.2646, -2.4686, 2.5136

Same Dimension

The Same Dimension uses a secret algorithm to generate beautiful new colors.



81.7287, 5.1370, 7.6257



87.8708, 7.6749, 8.9205



85.9540, -2.1838, 12.2064



38.8000, 1.4099, 3.2752



31.3535, 53.6889, 20.2598



8.7866, 15.0423, 5.6776

Inverse Universe

The Inverse Universe completely reimagines the original color for something new.



88.7010, -13.4838, 1.8842



96.8727, -16.3830, 1.5020



84.2481, -6.3579, -3.5117



41.3781, -5.4711, 1.1536



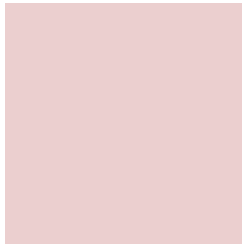
60.3285, -31.9773, -6.3756



16.9057, -8.9612, -1.7861

Previews

White Background



This preview shows how the HunterLab color 81.7269, 5.1394, 7.6244 looks on a white background.

Color Contrast Check

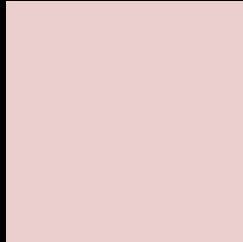
Large Text (above 18pt) WCAG AA × Fail

Any Text WCAG AA × Fail

Large Text (above 18pt) WCAG AAA × Fail

Any Text WCAG AAA × Fail

Black Background



This preview shows how the HunterLab color 81.7269, 5.1394, 7.6244 looks on a black background.

Color Contrast Check

Large Text (above 18pt) WCAG AA ✓ Pass

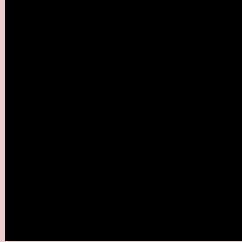
Any Text WCAG AA ✓ Pass

Large Text (above 18pt) WCAG AAA ✓ Pass

Any Text WCAG AAA ✓ Pass

If you want to check with other color combinations, try the [Color Contrast Checker](#).

HunterLab 81.7269, 5.1394, 7.6244 Background



This preview shows how black text looks on a background with the HunterLab color 81.7269, 5.1394, 7.6244.



This preview shows how white text looks on a background with the HunterLab color 81.7269, 5.1394,

7.6244.

Color Blindness Simulation

Color vision deficiency is a very complex topic, and I could not describe the different causes any better than Wikipedia does, so if you want to learn more, you should check out their [article about color blindness](#).

Dichromacy



Original Color

81.7269, 5.1394, 7.6244

Protanopia

81.9433, -3.2455, 6.3195

Deuteranopia

81.5356, 6.0180, 7.4214



Tritanopia

81.7849, 9.2353, 0.9657

Trichromacy



Original Color

81.7269, 5.1394, 7.6244

Protanomaly

81.8775, -0.3955, 6.7649

Deuteranomaly

81.5356, 6.0180, 7.4214

Tritanomaly

81.8128, 7.4991, 3.4631

Monochromacy



Original Color

81.7269, 5.1394, 7.6244

Achromatopsia

82.4344, -4.3985, 4.4788

Achromatomaly

82.0792, -1.0824, 5.5646

CSS Examples

Text

The CSS property to change the color of the text to HunterLab 81.7269, 5.1394, 7.6244 is called "color". The color property can be set on classes, ids or directly on the HTML element.

This example shows how text in the color `rgb(235, 207, 207)` looks like.

```
.text, #text, p{  
    color:rgb(235, 207, 207)  
}
```

If you want to add a text shadow in that color use the text-shadow property, you can generate a text shadow directly with our [CSS Text Shadow Generator](#).

Here you see how black text with a 4 pixel rgb(235, 207, 207) colored shadow looks like.

```
.shadow{ text-shadow: 4px 4px 2px rgb(235, 207, 207) }
```

Border

The CSS property to change the border of an element to HunterLab 81.7269, 5.1394, 7.6244 is called "border". The border property can be set on classes, ids or directly on the HTML element.

This example shows the color as border, it can be applied via the CSS property "border" or "border-color".

```
.border, #border, table{ border:4px solid rgb(235, 207, 207) }
```


If only the border color should be changed use the property `border-color`.

```
.border{ border-color:rgb(235, 207, 207) }
```

If you want to add a box shadow in that color use:

Here you see how a box with a 4 pixel `rgb(235, 207, 207)` colored shadow looks like.

```
.boxshadow{ -moz-box-shadow:4px 4px 4px  
4px rgb(235, 207, 207); -webkit-box-  
shadow:4px 4px 4px 4px rgb(235, 207, 207);  
box-shadow:4px 4px 4px 4px rgb(235, 207,  
207) }
```

Background

The CSS property to change the background color of an element to HunterLab 81.7269, 5.1394, 7.6244 is called "background". The background property can be set on classes, ids or directly on the HTML element.

```
.background, #background, body{  
background: rgb(235, 207, 207) }
```

If only the background color should be changed can be used:

```
.background{ background-color: rgb(235,  
207, 207) }
```

This example shows the color as background, it is applied via the CSS property "background".

To optimize and compress your CSS code, you can use our [online CSS compressor and optimizer](#) based on csstidy. If you want to create a linear or radial gradient as background or border, check our [CSS Gradient Generator](#).

Hey! You found this booklet interesting? Support Converting Colors with the new Membership Option!

The pro membership hides all ads, plus gives you double the colors in the color bucket, and more awesome pro features!

[Learn more, Memberships starting at \\$2.50/m!](#)

**Follow me
on Twitter!**

@ConvertingColor