

Converting Colors

HunterLab(81.8873, 1.9822,
4.1479)

Have a look what the booklet for
HunterLab(81.8873, 1.9822, 4.1479)
contains.

HunterLab(81.9562, 1.7972, 4.0229)	3
<i>Conversions</i>	4
<i>Details</i>	6
<i>Harmonies</i>	12
<i>Previews</i>	24
<i>Color Blindness Simulation</i>	28
<i>CSS Examples</i>	31

Color

**HunterLab(81.9562, 1.7972,
4.0229)**

Conversions

Conversions Part 1

Format	Color
Hex	E2D2D7
RGB	226, 210, 215
RGB Percent	89%, 82%, 84%
CMY	0.1137, 0.1764, 0.1569
CMYK	0.00, 0.07, 0.05, 0.11
HSL	341°, 22%, 85%
HSV	341°, 7%, 89%
XYZ	66.6763, 67.1682, 73.7405
YIQ	215.3540, 7.9310, 4.9470

Conversions

Conversions Part 2

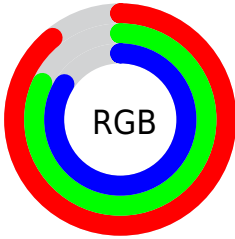
Format	Color
R _Y B	226, 210, 215
Decimal	14865111
CIE Lab	85.59, 6.39, -0.48
CIE LCh	86, 6.404, 355.694
Yxy	67.1711, 0.3212, 0.3236
Android (android.graphics.Color)	4293055191 (0xFFE2D2D7)
YUV	215.3540, -0.1745, 9.3365
Hunter-Lab	81.9562, 1.7972, 4.0229

Details

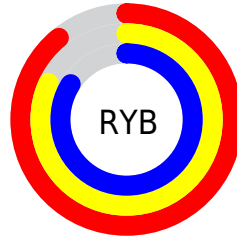
The HunterLab color $81.9562, 1.7972, 4.0229$ is a light color, and the websafe version is hex `CCCCCC`. A complement of this color would be $85.6251, -10.5288, 5.2077$, and the grayscale version is $82.5871, -4.4066, 4.4871$.

A 20% lighter version of the original color is $100.0000, -5.3358, 5.4332$, and $59.1379, 2.2367, 3.1364$ is the 20% darker color. If you saturate the color by 10%, you get $74.8510, 11.1010, 3.2952$, and if you desaturate by 10%, it is $89.4244, -7.2824, 5.0747$.

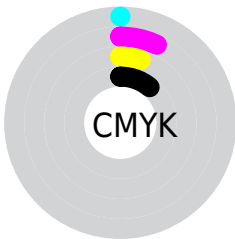
Distribution



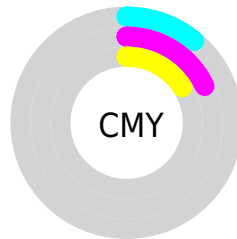
- Red (89%)
- Green (82%)
- Blue (84%)



- Red (89%)
- Yellow (82%)
- Blue (84%)



- Cyan (0%)
- Magenta (7%)
- Yellow (5%)
- Black (11%)



- Cyan (11%)
- Magenta (18%)
- Yellow (16%)

Brightness & Saturation Gradients

These gradients show how the HunterLab color 81.9562, 1.7972, 4.0229 changes by changing the brightness by 10 percent. The first figure shows a shift by +10% for each color and the second figure -10%.

Similar to the brightness gradients but the following saturation gradients show a change of the HunterLab color 81.9562, 1.7972, 4.0229 by changing the saturation by 10% instead.

81.9562, 1.7972,
4.0229

81.9562, 1.7972,
4.0229

212.2625, -2.9182,
10.9548

70.1596, 2.1228,
3.4040

107.3152, 1.0049,
5.3637

58.9890, 2.4007,
2.8191

120.8228, 0.5485,
6.0797

48.4835, 2.6236,
2.2719

134.8538, 0.0546,
6.8250

38.6884, 2.7851,
1.7651

149.3895, -0.4751,
7.5984

29.6596, 2.8767,
1.3023

164.4129, -1.0386,
8.3989

21.4685, 2.8860,
0.8879


179.9087, -1.6345,

14.2116, 2.7948,


9.2257


0.5284


195.8628, -2.2614,
10.0779


 7.8669, 3.1170,
0.1749


0.0000, NaN, NaN


 81.9562, 1.7972,
4.0229


 81.9562, 1.7972,
4.0229


 74.8510, 11.1010,
3.2952


 89.4244, -7.2824,
5.0747

 68.1661, 20.6149,
2.9608

 97.1329, -16.0359,
6.3107

 61.9816, 30.2592,
3.1089

 97.4212, -14.4264,
2.2002

 56.3928, 39.8565,
3.8361

■ 51.5110, 49.0771,
5.2312

■ 47.4550, 57.3988,
7.3421

■ 44.3312, 64.1386,
10.1253

■ 42.1988, 68.6303,
13.4024

■ 41.0147, 70.5835,
16.8525

Harmonies

Analogous

The Analogous color harmony consists of three colors that are next to each other on the color wheel.



81.9580, 0.7230, 1.1225



81.9562, 1.7972, 4.0229



81.9580, 1.1927, 6.9376

Triad

The Triadic color harmony groups three colors that are evenly spaced from another and form a triangle on the color wheel.



81.9580, 1.7951, 4.0243



81.9580, -7.0057, 9.5203



81.9580, -7.7876, -0.4788

Complementary

The Complementary color scheme is a pair of colors which are on the opposite of each other on the color wheel.



81.9562, 1.7972, 4.0229



85.6251, -10.5288, 5.2077

Split Complementary

Split-complementary colors differ from the complementary color scheme. The scheme consists of three colors, the original color and two neighbors of the complement color.



81.9580, -9.8027, 1.9050



81.9562, 1.7972, 4.0229



81.9580, -9.3562, 7.6651

Square

The Square scheme is like the rectangle color scheme, but the four colors are evenly spaced on the color wheel.



81.9580, 1.7951, 4.0243



81.9580, -3.9189, 10.0397



81.9580, -10.3725, 4.8957



81.9580, -4.8350, -1.5393

Rectangle

The Rectangle color scheme consists of four colors that form a rectangle on the color wheel.



81.9562, 1.7972, 4.0229



81.9580, -0.0726, 8.5065



81.9580, -10.3725, 4.8957



81.9580, -8.5953, 0.1986

Sweetspot

The Sweet Spot groups the original color and five complimentary colors.



81.9580, 1.7951, 4.0243



98.2676, -3.2458, 5.1831



81.8223, 2.0476, -1.6837



45.5026, -1.5497, 2.4035

0.0000, NaN, NaN



46.2646, -2.4686, 2.5136

Same Dimension

The Same Dimension uses a secret algorithm to generate beautiful new colors.



81.9580, 1.7951, 4.0243



93.1649, 3.0880, 4.5155



82.6920, -0.5661, 7.2246



37.1089, 1.8374, 1.7668



30.8216, 53.6764, 12.9897



8.2112, 14.4866, 2.0142

Inverse Universe

The Inverse Universe completely reimagines the original color for something new.



81.9580, 1.7951, 4.0243



93.1649, 3.0880, 4.5155



84.8561, -8.1621, 1.8710



37.1089, 1.8374, 1.7668



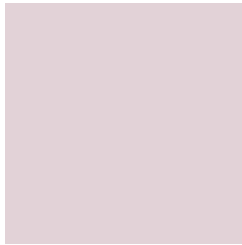
30.8216, 53.6764, 12.9897



8.2112, 14.4866, 2.0142

Previews

White Background



This preview shows how the HunterLab color 81.9562, 1.7972, 4.0229 looks on a white background.

Color Contrast Check

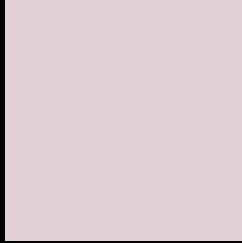
Large Text (above 18pt) WCAG AA × Fail

Any Text WCAG AA × Fail

Large Text (above 18pt) WCAG AAA × Fail

Any Text WCAG AAA × Fail

Black Background



This preview shows how the HunterLab color 81.9562, 1.7972, 4.0229 looks on a black background.

Color Contrast Check

Large Text (above 18pt) WCAG AA ✓ Pass

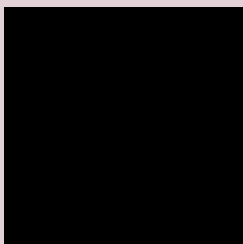
Any Text WCAG AA ✓ Pass

Large Text (above 18pt) WCAG AAA ✓ Pass

Any Text WCAG AAA ✓ Pass

If you want to check with other color combinations, try the [Color Contrast Checker](#).

HunterLab 81.9562, 1.7972, 4.0229 Background



This preview shows how black text looks on a background with the HunterLab color 81.9562, 1.7972, 4.0229.

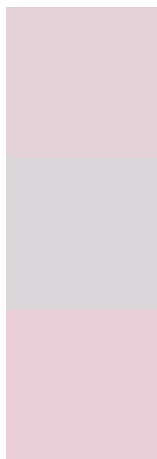


This preview shows how white text looks on a background with the HunterLab color 81.9562, 1.7972,

Color Blindness Simulation

Color vision deficiency is a very complex topic, and I could not describe the different causes any better than Wikipedia does, so if you want to learn more, you should check out their [article about color blindness](#).

Dichromacy



Original Color

81.9562, 1.7972, 4.0229

Protanopia

82.0670, -2.3827, 3.1014

Deuteranopia

81.8999, 6.2736, 3.5454



Tritanopia

81.7795, 4.9274, -1.1662

Trichromacy



Original Color

81.9562, 1.7972, 4.0229

Protanomaly

82.0125, -1.0628, 3.5509

Deuteranomaly

81.8893, 4.7124, 3.5054

Tritanomaly

81.9465, 3.6913, 1.0661

Monochromacy



Original Color

81.9562, 1.7972, 4.0229

Achromatopsia

82.4344, -4.3985, 4.4788

Achromatomaly

82.1918, -2.0780, 4.2335

CSS Examples

Text

The CSS property to change the color of the text to HunterLab 81.9562, 1.7972, 4.0229 is called "color". The color property can be set on classes, ids or directly on the HTML element.

This example shows how text in the color `rgb(226, 210, 215)` looks like.

```
.text, #text, p{  
    color:rgb(226, 210, 215)  
}
```

If you want to add a text shadow in that color use the text-shadow property, you can generate a text shadow directly with our [CSS Text Shadow Generator](#).

Here you see how black text with a 4 pixel rgb(226, 210, 215) colored shadow looks like.

```
.shadow{ text-shadow: 4px 4px 2px rgb(226, 210, 215) }
```

Border

The CSS property to change the border of an element to HunterLab 81.9562, 1.7972, 4.0229 is called "border". The border property can be set on classes, ids or directly on the HTML element.

This example shows the color as border, it can be applied via the CSS property "border" or "border-color".

```
.border, #border, table{ border:4px solid rgb(226, 210, 215) }
```


If only the border color should be changed use the property `border-color`.

```
.border{ border-color:rgb(226, 210, 215) }
```

If you want to add a box shadow in that color use:

Here you see how a box with a 4 pixel `rgb(226, 210, 215)` colored shadow looks like.

```
.boxshadow{ -moz-box-shadow:4px 4px 4px  
4px rgb(226, 210, 215); -webkit-box-  
shadow:4px 4px 4px 4px rgb(226, 210, 215);  
box-shadow:4px 4px 4px 4px rgb(226, 210,  
215) }
```

Background

The CSS property to change the background color of an element to HunterLab 81.9562, 1.7972, 4.0229 is called "background". The background property can be set on classes, ids or directly on the HTML element.

```
.background, #background, body{  
background: rgb(226, 210, 215) }
```

If only the background color should be changed can be used:

```
.background{ background-color: rgb(226,  
210, 215) }
```

This example shows the color as background, it is applied via the CSS property "background".

To optimize and compress your CSS code, you can use our [online CSS compressor and optimizer](#) based on csstidy. If you want to create a linear or radial gradient as background or border, check our [CSS Gradient Generator](#).

Hey! You found this booklet interesting? Support Converting Colors with the new Membership Option!

The pro membership hides all ads, plus gives you double the colors in the color bucket, and more awesome pro features!

[Learn more, Memberships starting at \\$2.50/m!](#)

**Follow me
on Twitter!**

@ConvertingColor