

Converting Colors

HunterLab(81.9737, 0.5246,
11.7212)

Have a look what the booklet for
HunterLab(81.9737, 0.5246,
11.7212) contains.

HunterLab(81.8495, 0.4208, 11.7419)	3
<i>Conversions</i>	4
<i>Details</i>	6
<i>Harmonies</i>	12
<i>Previews</i>	24
<i>Color Blindness Simulation</i>	28
<i>CSS Examples</i>	31

Color

**HunterLab(81.8495, 0.4208,
11.7419)**

Conversions

Conversions Part 1

Format	Color
Hex	E6D2C6
RGB	230, 210, 198
RGB Percent	90%, 82%, 78%
CMY	0.0980, 0.1764, 0.2235
CMYK	0.00, 0.09, 0.14, 0.10
HSL	23°, 39%, 84%
HSV	23°, 14%, 90%
XYZ	65.8728, 66.9934, 62.8853
YIQ	214.6120, 15.7720, 0.5080

Conversions

Conversions Part 2

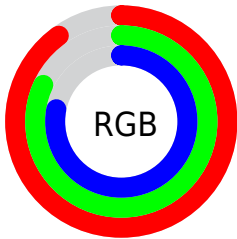
Format	Color
R _Y B	230, 217, 198
Decimal	15127238
CIE Lab	85.50, 4.97, 8.45
CIE LCh	86, 9.802, 59.508
Yxy	66.9964, 0.3365, 0.3422
Android (android.graphics.Color)	4293317318 (0xFFE6D2C6)
YUV	214.6120, -8.1897, 13.4953
Hunter-Lab	81.8495, 0.4208, 11.7419

Details

The HunterLab color $81.8495, 0.4208, 11.7419$ is a light color, and the websafe version is hex `CCCCCC`. A complement of this color would be $82.3774, -8.4226, -3.2688$, and the grayscale version is $82.2978, -4.3912, 4.4714$.

A 20% lighter version of the original color is $100.0000, -5.3358, 5.4332$, and $58.9824, 0.8201, 9.8359$ is the 20% darker color. If you saturate the color by 10%, you get $76.9631, 4.5391, 16.2589$, and if you desaturate by 10%, it is $86.9242, -3.3568, 6.8433$.

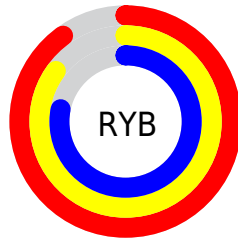
Distribution



Red (90%)

Green (82%)

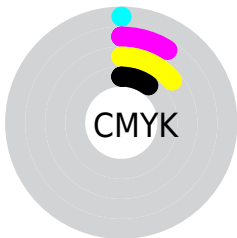
Blue (78%)



Red (90%)

Yellow (85%)

Blue (78%)

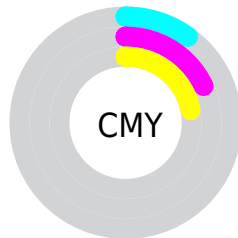


Cyan (0%)

Magenta (9%)

Yellow (14%)

Black (10%)



Cyan (10%)

Magenta (18%)

Yellow (22%)

Brightness & Saturation Gradients

These gradients show how the HunterLab color 81.8495, 0.4208, 11.7419 changes by changing the brightness by 10 percent. The first figure shows a shift by +10% for each color and the second figure -10%.

Similar to the brightness gradients but the following saturation gradients show a change of the HunterLab color 81.8495, 0.4208, 11.7419 by changing the saturation by 10% instead.

81.8495, 0.4208,
11.7419

81.8495, 0.4208,
11.7419

212.1160, -4.7847,
21.7888

70.0583, 0.8119,
10.6959

107.1985, -0.4944,
13.8731

58.8934, 1.1588,
9.6579

120.7014, -1.0085,
14.9584

48.3940, 1.4548,
8.6259

134.7279, -1.5582,
16.0582

38.6054, 1.6943,
7.5953

149.2592, -2.1417,
17.1731

29.5836, 1.8697,
6.5584

164.2784, -2.7573,
18.3034

21.4002, 1.9704,
5.5025

179.7700, -3.4039,

14.1522, 1.9804,

19.4494

4.4043

195.7202, -4.0800,
20.6111

■ 7.8046, 2.3601,
4.9110

0.0000, NaN, NaN

■ 81.8495, 0.4208,
11.7419

■ 81.8495, 0.4208,
11.7419

■ 76.9631, 4.5391,
16.2589

■ 86.9242, -3.3568,
6.8433

■ 72.2803, 9.0339,
20.3294

■ 92.1636, -6.8171,
1.6107

■ 67.8271, 13.9251,
23.8833

■ 97.1445, -12.2615,
1.9035

■ 63.6307, 19.2234,
26.8396

■ 97.7564, -13.2309,
2.6251

■ 59.7214, 24.9183,
29.1115

■ 56.1320, 30.9672,
30.6148

■ 52.8960, 37.2808,
31.2850

■ 50.0446, 43.7078,
31.1102

■ 48.5012, 47.5543,
30.7187

Harmonies

Analogous

The Analogous color harmony consists of three colors that are next to each other on the color wheel.



81.8513, 3.9108, 8.7092



81.8495, 0.4208, 11.7419



81.8513, -4.2916, 12.8461

Triad

The Triadic color harmony groups three colors that are evenly spaced from another and form a triangle on the color wheel.



81.8513, 0.4184, 11.7432



81.8513, -13.4978, 4.5316



81.8513, 0.2765, -3.6547

Complementary

The Complementary color scheme is a pair of colors which are on the opposite of each other on the color wheel.



81.8495, 0.4208, 11.7419



82.3774, -8.4226, -3.2688

Split Complementary

Split-complementary colors differ from the complementary color scheme. The scheme consists of three colors, the original color and two neighbors of the complement color.



81.8513, -4.4519, -4.9299



81.8495, 0.4208, 11.7419



81.8513, -12.3375, -0.0397

Square

The Square scheme is like the rectangle color scheme, but the four colors are evenly spaced on the color wheel.



81.8513, 0.4184, 11.7432



81.8513, -12.2605, 8.8339



81.8513, -9.0543, -3.5709



81.8513, 3.8275, -0.1792

Rectangle

The Rectangle color scheme consists of four colors that form a rectangle on the color wheel.



81.8495, 0.4208, 11.7419



81.8513, -7.4655, 12.3906



81.8513, -9.0543, -3.5709



81.8513, -1.2314, -4.3636

Sweetspot

The Sweet Spot groups the original color and five complimentary colors.



81.8513, 0.4184, 11.7432



97.6529, -3.7288, 7.7558



78.9228, 10.0671, -1.1596



44.9761, -1.5824, 3.7872

0.0000, NaN, NaN



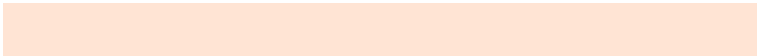
46.2646, -2.4686, 2.5136

Same Dimension

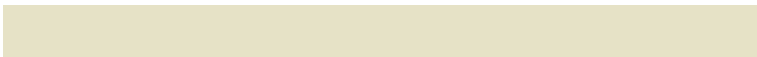
The Same Dimension uses a secret algorithm to generate beautiful new colors.



81.8513, 0.4184, 11.7432



90.2409, 1.9014, 14.8673



86.6884, -7.6690, 16.7415



39.0505, -0.6063, 4.4594



36.7885, 34.9897, 23.2815



10.8352, 7.4025, 6.8062

Inverse Universe

The Inverse Universe completely reimagines the original color for something new.



82.3774, -8.4226, -3.2688



90.9641, -10.2666, -5.7929



77.5153, -0.3509, -9.5032



39.2175, -3.4099, -0.3015



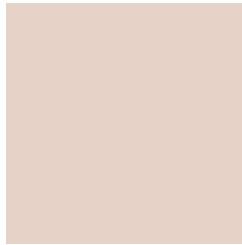
38.3683, -2.8054, -41.9009



11.2470, -2.0575, -9.6162

Previews

White Background



This preview shows how the HunterLab color 81.8495, 0.4208, 11.7419 looks on a white background.

Color Contrast Check

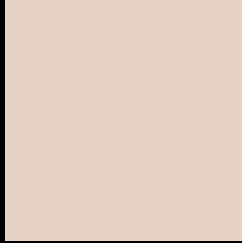
Large Text (above 18pt) WCAG AA × Fail

Any Text WCAG AA × Fail

Large Text (above 18pt) WCAG AAA × Fail

Any Text WCAG AAA × Fail

Black Background



This preview shows how the HunterLab color 81.8495, 0.4208, 11.7419 looks on a black background.

Color Contrast Check

Large Text (above 18pt) WCAG AA ✓ Pass

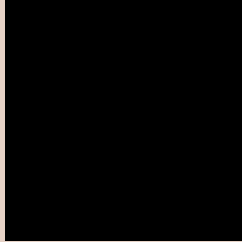
Any Text WCAG AA ✓ Pass

Large Text (above 18pt) WCAG AAA ✓ Pass

Any Text WCAG AAA ✓ Pass

If you want to check with other color combinations, try the [Color Contrast Checker](#).

HunterLab 81.8495, 0.4208, 11.7419 Background



This preview shows how black text looks on a background with the HunterLab color 81.8495, 0.4208, 11.7419.



This preview shows how white text looks on a background with the HunterLab color 81.8495, 0.4208,

Color Blindness Simulation

Color vision deficiency is a very complex topic, and I could not describe the different causes any better than Wikipedia does, so if you want to learn more, you should check out their [article about color blindness](#).

Dichromacy



Original Color

81.8495, 0.4208, 11.7419

Protanopia

81.9334, -3.8695, 10.8771

Deuteranopia

81.7260, 6.1888, 11.2682



Tritanopia

81.7276, 7.6674, -0.1514

Trichromacy



Original Color

81.8495, 0.4208, 11.7419

Protanomaly

81.8888, -2.5071, 11.2942

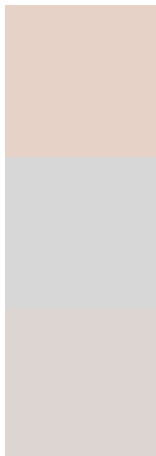
Deuteranomaly

81.5978, 4.2377, 11.0934

Tritanomaly

81.6312, 5.2463, 4.1856

Monochromacy



Original Color

81.8495, 0.4208, 11.7419

Achromatopsia

82.4344, -4.3985, 4.4788

Achromatomaly

82.1021, -2.7564, 6.9815

CSS Examples

Text

The CSS property to change the color of the text to HunterLab 81.8495, 0.4208, 11.7419 is called "color". The color property can be set on classes, ids or directly on the HTML element.

This example shows how text in the color `rgb(230, 210, 198)` looks like.

```
.text, #text, p{  
    color:rgb(230, 210, 198)  
}
```

If you want to add a text shadow in that color use the text-shadow property, you can generate a text shadow directly with our [CSS Text Shadow Generator](#).

Here you see how black text with a 4 pixel rgb(230, 210, 198) colored shadow looks like.

```
.shadow{ text-shadow: 4px 4px 2px rgb(230, 210, 198) }
```

Border

The CSS property to change the border of an element to HunterLab 81.8495, 0.4208, 11.7419 is called "border". The border property can be set on classes, ids or directly on the HTML element.

This example shows the color as border, it can be applied via the CSS property "border" or "border-color".

```
.border, #border, table{ border:4px solid rgb(230, 210, 198) }
```


If only the border color should be changed use the property `border-color`.

```
.border{ border-color:rgb(230, 210, 198) }
```

If you want to add a box shadow in that color use:

Here you see how a box with a 4 pixel `rgb(230, 210, 198)` colored shadow looks like.

```
.boxshadow{ -moz-box-shadow:4px 4px 4px  
4px rgb(230, 210, 198); -webkit-box-  
shadow:4px 4px 4px 4px rgb(230, 210, 198);  
box-shadow:4px 4px 4px 4px rgb(230, 210,  
198) }
```

Background

The CSS property to change the background color of an element to HunterLab 81.8495, 0.4208, 11.7419 is called "background". The background property can be set on classes, ids or directly on the HTML element.

```
.background, #background, body{  
background: rgb(230, 210, 198) }
```

If only the background color should be changed can be used:

```
.background{ background-color: rgb(230,  
210, 198) }
```

This example shows the color as background, it is applied via the CSS property "background".

To optimize and compress your CSS code, you can use our [online CSS compressor and optimizer](#) based on csstidy. If you want to create a linear or radial gradient as background or border, check our [CSS Gradient Generator](#).

Hey! You found this booklet interesting? Support Converting Colors with the new Membership Option!

The pro membership hides all ads, plus gives you double the colors in the color bucket, and more awesome pro features!

[Learn more, Memberships starting at \\$2.50/m!](#)

**Follow me
on Twitter!**

@ConvertingColor