

# Converting Colors

HunterLab(82.0419, 24.1142,  
-9.6672)

Have a look what the booklet for  
HunterLab(82.0419, 24.1142,  
-9.6672) contains.

<b>HunterLab(81.9455, 24.3378, -9.8592)</b> .....	3
<b><i>Conversions</i></b> .....	4
<b><i>Details</i></b> .....	6
<b><i>Harmonies</i></b> .....	12
<b><i>Previews</i></b> .....	24
<b><i>Color Blindness Simulation</i></b> .....	28
<b><i>CSS Examples</i></b> .....	31

# Color

**HunterLab(81.9455, 24.3378,  
-9.8592)**

# Conversions

## Conversions Part 1

Format	Color
Hex	FFC4F2
RGB	255, 196, 242
RGB Percent	100%, 77%, 95%
CMY	0.0000, 0.2313, 0.0510
CMYK	0.00, 0.23, 0.05, 0.00
HSL	313°, 100%, 88%
HSV	313°, 23%, 100%
XYZ	77.0069, 67.1506, 92.9071
YIQ	218.8850, 20.3980, 26.8140

# Conversions

## Conversions Part 2

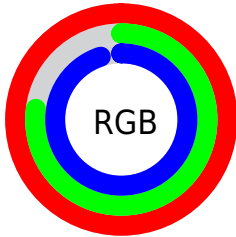
<b>Format</b>	<b>Color</b>
R <sub>Y</sub> B	255, 196, 242
Decimal	16762098
CIE Lab	85.58, 28.28, -14.56
CIE LCh	86, 31.803, 332.759
Yxy	67.1534, 0.3248, 0.2833
Android (android.graphics.Color)	4294952178 (0xFFFFC4F2)
YUV	218.8850, 11.3957, 31.6729
Hunter-Lab	81.9455, 24.3378, -9.8592

# Details

The HunterLab color  $81.9455, 24.3378, -9.8592$  is a light color, and the websafe version is hex  $\text{FFCCFF}$ . A complement of this color would be  $93.7338, -30.6632, 19.0640$ , and the grayscale version is  $84.0626, -4.4854, 4.5673$ .

A 20% lighter version of the original color is  $99.3633, -4.2744, 4.7000$ , and  $59.0736, 23.0007, -9.8210$  is the 20% darker color. If you saturate the color by 10%, you get  $75.0186, 37.4313, -16.0679$ , and if you desaturate by 10%, it is  $89.4395, 11.3537, -3.3550$ .

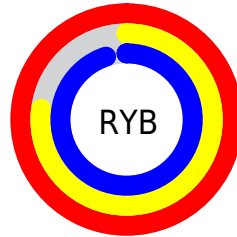
# Distribution



Red (100%)

Green (77%)

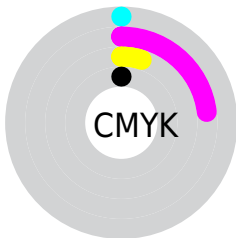
Blue (95%)



Red (100%)

Yellow (77%)

Blue (95%)

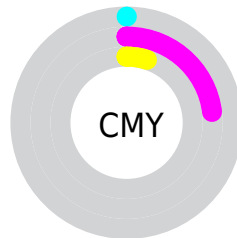


Cyan (0%)

Magenta (23%)

Yellow (5%)

Black (0%)



Cyan (0%)

Magenta (23%)

Yellow (5%)

# Brightness & Saturation Gradients

These gradients show how the HunterLab color 81.9455, 24.3378, -9.8592 changes by changing the brightness by 10 percent. The first figure shows a shift by +10% for each color and the second figure -10%.

Similar to the brightness gradients but the following saturation gradients show a change of the HunterLab color 81.9455, 24.3378, -9.8592 by changing the saturation by 10% instead.



81.9455, 24.3378,  
-9.8592

81.9455, 24.3378,  
-9.8592

212.2476, 26.9347,  
-7.3729

70.1493, 23.7036,  
-9.8972

107.3034, 25.3547,  
-9.6164

58.9792, 22.9809,  
-9.8770

120.8104, 25.7563,  
-9.4215

48.4744, 22.1567,  
-9.7925

134.8410, 26.0929,  
-9.1810

38.6800, 21.2190,  
-9.6381

149.3763, 26.3687,  
-8.8975

29.6519, 20.1542,  
-9.4087

164.3992, 26.5877,  
-8.5731

21.4615, 18.9482,  
-9.1014

179.8946, 26.7531,

14.2056, 17.5952,

-8.2097

-8.7238

195.8483, 26.8679,  
-7.8091

7.8606, 17.0600,  
-8.7387

0.0000, INF, -NF

81.9455, 24.3378,  
-9.8592

81.9455, 24.3378,  
-9.8592

75.0186, 37.4313,  
-16.0679

89.4395, 11.3537,  
-3.3550

68.7523, 50.4063,  
-21.7985

97.4126, -1.3951,  
3.3187

63.2602, 62.8494,  
-26.7800

100.0000, -5.3358,  
5.4332

58.6589, 74.1426,  
-30.6635

■ 55.0509, 83.4993,  
-33.0669

■ 52.4943, 90.1395,  
-33.6860

■ 50.9636, 93.6045,  
-32.4495

■ 50.3735, 94.4346,  
-30.7704

# Harmonies

## Analogous

The Analogous color harmony consists of three colors that are next to each other on the color wheel.



81.9472, 12.6685, -23.6640



81.9455, 24.3378, -9.8592



81.9472, 28.1314, 5.8356

# Triad

The Triadic color harmony groups three colors that are evenly spaced from another and form a triangle on the color wheel.



81.9472, 24.3348, -9.8577



81.9472, -5.8299, 28.3407



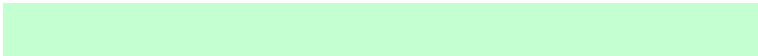
81.9472, -28.3292, -12.7157

# Complementary

The Complementary color scheme is a pair of colors which are on the opposite of each other on the color wheel.



81.9455, 24.3378, -9.8592



93.7338, -30.6632, 19.0640

# Split Complementary

Split-complementary colors differ from the complementary color scheme. The scheme consists of three colors, the original color and two neighbors of the complement color.



81.9472, -32.4945, 3.0614



81.9455, 24.3378, -9.8592



81.9472, -20.1337, 25.1835

# Square

The Square scheme is like the rectangle color scheme, but the four colors are evenly spaced on the color wheel.



81.9472, 24.3348, -9.8577



81.9472, 9.9565, 26.1690



81.9472, -29.6098, 16.5860



81.9472, -17.7881, -25.5210



# Rectangle

The Rectangle color scheme consists of four colors that form a rectangle on the color wheel.



81.9455, 24.3378, -9.8592



81.9472, 25.4723, 14.8444



81.9472, -29.6098, 16.5860



81.9472, -30.4838, -7.4895

# Sweetspot

The Sweet Spot groups the original color and five complimentary colors.



81.9472, 24.3348, -9.8577



94.2786, 3.5009, 0.7246



77.6060, 11.4540, -24.2582



43.3938, 1.9751, 0.1485

0.0000, NaN, NaN



46.2646, -2.4686, 2.5136



# Same Dimension

The Same Dimension uses a secret algorithm to generate beautiful new colors.



81.9472, 24.3348, -9.8577



78.5002, 30.7031, -12.9253



80.9521, 19.2025, 4.2487



42.6940, 3.0974, -0.4382



36.4448, 68.3764, -22.6781



11.4427, 21.5862, -8.0335



# Inverse Universe

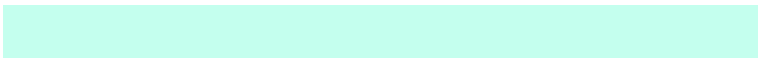
The Inverse Universe completely reimagines the original color for something new.



81.9472, 24.3348, -9.8577



78.5002, 30.7031, -12.9253



94.5761, -25.8409, 6.9777



42.6940, 3.0974, -0.4382



36.4448, 68.3764, -22.6781



11.4427, 21.5862, -8.0335



# Previews

## White Background



This preview shows how the HunterLab color 81.9455, 24.3378, -9.8592 looks on a white background.

## Color Contrast Check

Large Text (above 18pt) WCAG AA × Fail

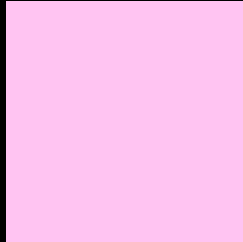
Any Text WCAG AA × Fail

Large Text (above 18pt) WCAG AAA × Fail

Any Text WCAG AAA × Fail



# Black Background



This preview shows how the HunterLab color 81.9455, 24.3378, -9.8592 looks on a black background.

## Color Contrast Check

Large Text (above 18pt) WCAG AA ✓ Pass

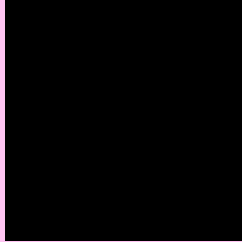
Any Text WCAG AA ✓ Pass

Large Text (above 18pt) WCAG AAA ✓ Pass

Any Text WCAG AAA ✓ Pass

If you want to check with other color combinations, try the [Color Contrast Checker](#).

# HunterLab 81.9455, 24.3378, -9.8592 Background



This preview shows how black text looks on a background with the HunterLab color 81.9455, 24.3378, -9.8592.



This preview shows how white text looks on a background with the HunterLab color 81.9455, 24.3378, -9.8592.

-9.8592.

# Color Blindness Simulation

Color vision deficiency is a very complex topic, and I could not describe the different causes any better than Wikipedia does, so if you want to learn more, you should check out their [article about color blindness](#).

## Dichromacy



### Original Color

81.9455, 24.3378, -9.8592

### Protanopia

82.0370, 1.6225, -16.5824

### Deuteranopia

82.2072, 5.8735, -8.6980



## Tritanopia

82.1137, 15.9160, 3.9684

# Trichromacy



## Original Color

81.9455, 24.3378, -9.8592



## Protanomaly

81.7493, 9.5890, -14.4588



## Deuteranomaly

81.9749, 12.7380, -9.4544



## Tritanomaly

81.9547, 18.8907, -0.7034

# Monochromacy



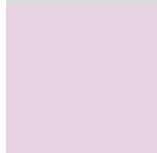
## Original Color

81.9455, 24.3378, -9.8592



## Achromatopsia

84.1651, -4.4908, 4.5728



## Achromatomaly

83.2408, 5.3746, -0.3762

# CSS Examples

## Text

The CSS property to change the color of the text to HunterLab 81.9455, 24.3378, -9.8592 is called "color". The color property can be set on classes, ids or directly on the HTML element.

This example shows how text in the color `rgb(255, 196, 242)` looks like.

```
.text, #text, p{  
    color:rgb(255, 196, 242)  
}
```

If you want to add a text shadow in that color use the text-shadow property, you can generate a text shadow directly with our [CSS Text Shadow Generator](#).

Here you see how black text with a 4 pixel rgb(255, 196, 242) colored shadow looks like.

```
.shadow{ text-shadow: 4px 4px 2px rgb(255, 196, 242) }
```

## Border

The CSS property to change the border of an element to HunterLab 81.9455, 24.3378, -9.8592 is called "border". The border property can be set on classes, ids or directly on the HTML element.

This example shows the color as border, it can be applied via the CSS property "border" or "border-color".

```
.border, #border, table{ border:4px solid rgb(255, 196, 242) }
```



If only the border color should be changed use the property `border-color`.

```
.border{ border-color:rgb(255, 196, 242) }
```

If you want to add a box shadow in that color use:

Here you see how a box with a 4 pixel `rgb(255, 196, 242)` colored shadow looks like.

```
.boxshadow{ -moz-box-shadow:4px 4px 4px  
4px rgb(255, 196, 242); -webkit-box-  
shadow:4px 4px 4px 4px rgb(255, 196, 242);  
box-shadow:4px 4px 4px 4px rgb(255, 196,  
242) }
```

# Background

The CSS property to change the background color of an element to HunterLab 81.9455, 24.3378, -9.8592 is called "background". The background property can be set on classes, ids or directly on the HTML element.

```
.background, #background, body{  
background: rgb(255, 196, 242) }
```

If only the background color should be changed can be used:

```
.background{ background-color: rgb(255,  
196, 242) }
```

This example shows the color as background, it is applied via the CSS property "background".

To optimize and compress your CSS code, you can use our [online CSS compressor and optimizer](#) based on csstidy. If you want to create a linear or radial gradient as background or border, check our [CSS Gradient Generator](#).

Hey! You found this booklet interesting? Support Converting Colors with the new Membership Option!

The pro membership hides all ads, plus gives you double the colors in the color bucket, and more awesome pro features!

**[Learn more, Memberships starting at \\$2.50/m!](#)**

**Follow me  
on Twitter!**

@ConvertingColor