

Converting Colors

HunterLab(82.0858, 3.2308,
8.4609)

Have a look what the booklet for
HunterLab(82.0858, 3.2308, 8.4609)
contains.

HunterLab(82.0858, 3.2308, 8.4609)	3
<i>Conversions</i>	4
<i>Details</i>	6
<i>Harmonies</i>	12
<i>Previews</i>	24
<i>Color Blindness Simulation</i>	28
<i>CSS Examples</i>	31

Color

**HunterLab(82.0858, 3.2308,
8.4609)**

Conversions

Conversions Part 1

Format	Color
Hex	E9D1CE
RGB	233, 209, 206
RGB Percent	91%, 82%, 81%
CMY	0.0863, 0.1804, 0.1922
CMYK	0.00, 0.10, 0.12, 0.09
HSL	7°, 38%, 86%
HSV	7°, 12%, 91%
XYZ	67.5453, 67.3808, 67.8383
YIQ	215.8340, 15.2670, 4.1550

Conversions

Conversions Part 2

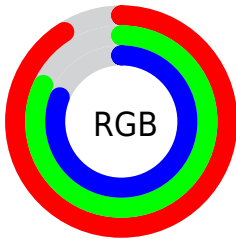
Format	Color
R _Y B	233, 209, 206
Decimal	15323598
CIE Lab	85.70, 7.85, 4.52
CIE LCh	86, 9.055, 29.949
Yxy	67.3838, 0.3331, 0.3323
Android (android.graphics.Color)	4293513678 (0xFFE9D1CE)
YUV	215.8340, -4.8482, 15.0546
Hunter-Lab	82.0858, 3.2308, 8.4609

Details

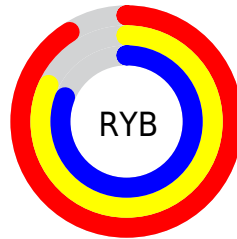
The HunterLab color $82.0858, 3.2308, 8.4609$ is a light color, and the websafe version is hex `CCCCCC`. A complement of this color would be $86.9467, -11.6133, 0.8032$, and the grayscale version is $82.8119, -4.4186, 4.4993$.

A 20% lighter version of the original color is $100.0000, -5.3358, 5.4332$, and $59.2088, 3.4697, 6.7984$ is the 20% darker color. If you saturate the color by 10%, you get $75.3818, 10.5558, 11.5264$, and if you desaturate by 10%, it is $89.1246, -3.7408, 5.3916$.

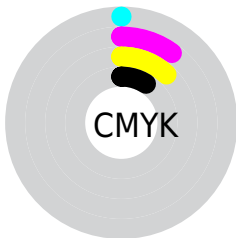
Distribution



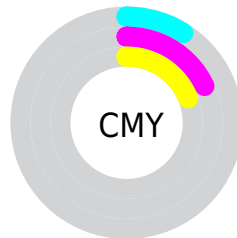
- Red (91%)
- Green (82%)
- Blue (81%)



- Red (91%)
- Yellow (82%)
- Blue (81%)



- Cyan (0%)
- Magenta (10%)
- Yellow (12%)
- Black (9%)



- Cyan (9%)
- Magenta (18%)
- Yellow (19%)

Brightness & Saturation Gradients

These gradients show how the HunterLab color 82.0858, 3.2308, 8.4609 changes by changing the brightness by 10 percent. The first figure shows a shift by +10% for each color and the second figure -10%.

Similar to the brightness gradients but the following saturation gradients show a change of the HunterLab color 82.0858, 3.2308, 8.4609 by changing the saturation by 10% instead.

82.0858, 3.2308,
8.4609

82.0858, 3.2308,
8.4609

212.4405, -0.9818,
17.1144

70.2827, 3.4890,
7.6075

107.4570, 2.5641,
10.2370

59.1051, 3.6962,
6.7743

120.9703, 2.1670,
11.1568

48.5924, 3.8444,
5.9622

135.0068, 1.7302,
12.0979

38.7894, 3.9265,
5.1701

149.5478, 1.2559,
13.0602

29.7520, 3.9327,
4.3961

164.5764, 0.7459,
14.0433

21.5514, 3.8494,
3.6361

180.0771, 0.2020,

14.2839, 3.6564,

15.0469

2.8817

196.0361, -0.3743,
16.0707

■ 7.9419, 3.8806,
2.7917

0.0000, NaN, NaN

■ 82.0858, 3.2308,
8.4609

■ 82.0858, 3.2308,
8.4609

■ 75.3818, 10.5558,
11.5264

■ 89.1246, -3.7408,
5.3916

■ 69.0617, 18.2596,
14.5583

■ 96.4487, -10.3864,
2.3276

■ 63.1943, 26.3229,
17.5119

■ 98.0121, -12.3215,
2.9483

■ 57.8602, 34.6623,
20.3112

■ 53.1527, 43.0865,
22.8408

■ 49.1718, 51.2533,
24.9443

■ 46.0110, 58.6586,
26.4458

■ 43.7330, 64.7054,
27.2087

■ 42.4961, 68.3283,
27.3821

Harmonies

Analogous

The Analogous color harmony consists of three colors that are next to each other on the color wheel.



82.0876, 4.4258, 4.4610



82.0858, 3.2308, 8.4609



82.0876, -0.0176, 11.2618

Triad

The Triadic color harmony groups three colors that are evenly spaced from another and form a triangle on the color wheel.



82.0876, 3.2284, 8.4622



82.0876, -11.7221, 8.4742



82.0876, -4.3920, -4.1731

Complementary

The Complementary color scheme is a pair of colors which are on the opposite of each other on the color wheel.



82.0858, 3.2308, 8.4609



86.9467, -11.6133, 0.8032

Split Complementary

Split-complementary colors differ from the complementary color scheme. The scheme consists of three colors, the original color and two neighbors of the complement color.



82.0876, -8.6618, -2.9606



82.0858, 3.2308, 8.4609



82.0876, -12.8380, 4.4755

Square

The Square scheme is like the rectangle color scheme, but the four colors are evenly spaced on the color wheel.



82.0876, 3.2284, 8.4622



82.0876, -8.6488, 11.2685



82.0876, -11.7295, 0.2629



82.0876, -0.0311, -2.9686

Rectangle

The Rectangle color scheme consists of four colors that form a rectangle on the color wheel.



82.0858, 3.2308, 8.4609



82.0876, -2.8727, 12.1482



82.0876, -11.7295, 0.2629



82.0876, -5.8852, -4.0339

Sweetspot

The Sweet Spot groups the original color and five complimentary colors.



82.0876, 3.2284, 8.4622



97.5990, -3.0652, 6.4580



81.9739, 8.9754, -3.6381



44.8591, -1.1348, 3.1146

0.0000, NaN, NaN



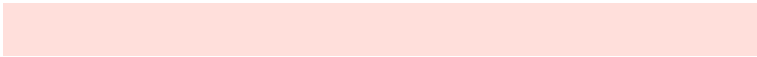
46.2646, -2.4686, 2.5136

Same Dimension

The Same Dimension uses a secret algorithm to generate beautiful new colors.



82.0876, 3.2284, 8.4622



89.0568, 5.5523, 10.2181



86.0986, -3.6405, 12.7783



39.1456, 0.8075, 3.6600



32.1484, 51.0148, 20.7028



9.4932, 12.7560, 6.0730

Inverse Universe

The Inverse Universe completely reimagines the original color for something new.



86.9467, -11.6133, 0.8032



95.5712, -14.3587, -0.0532



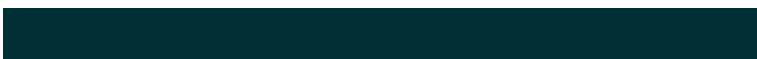
82.7820, -4.8755, -4.2898



41.0109, -4.8874, 0.7204



53.6612, -23.8056, -15.6824



15.3063, -7.0112, -3.9964

Previews

White Background



This preview shows how the HunterLab color 82.0858, 3.2308, 8.4609 looks on a white background.

Color Contrast Check

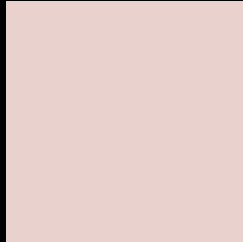
Large Text (above 18pt) WCAG AA × Fail

Any Text WCAG AA × Fail

Large Text (above 18pt) WCAG AAA × Fail

Any Text WCAG AAA × Fail

Black Background



This preview shows how the HunterLab color 82.0858, 3.2308, 8.4609 looks on a black background.

Color Contrast Check

Large Text (above 18pt) WCAG AA ✓ Pass

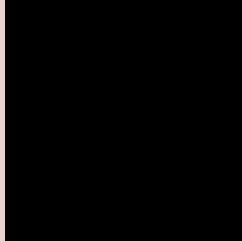
Any Text WCAG AA ✓ Pass

Large Text (above 18pt) WCAG AAA ✓ Pass

Any Text WCAG AAA ✓ Pass

If you want to check with other color combinations, try the [Color Contrast Checker](#).

HunterLab 82.0858, 3.2308, 8.4609 Background



This preview shows how black text looks on a background with the HunterLab color 82.0858, 3.2308, 8.4609.



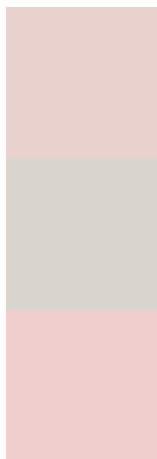
This preview shows how white text looks on a background with the HunterLab color 82.0858, 3.2308,

8.4609.

Color Blindness Simulation

Color vision deficiency is a very complex topic, and I could not describe the different causes any better than Wikipedia does, so if you want to learn more, you should check out their [article about color blindness](#).

Dichromacy



Original Color

82.0858, 3.2308, 8.4609

Protanopia

81.9772, -3.2490, 7.2975

Deuteranopia

82.0116, 6.0357, 8.4262



Tritanopia

81.9344, 8.3556, 0.1160

Trichromacy



Original Color

82.0858, 3.2308, 8.4609

Protanomaly

82.1214, -1.2400, 7.9616

Deuteranomaly

82.0980, 4.8034, 8.5023

Tritanomaly

81.9316, 6.4429, 3.0940

Monochromacy



Original Color

82.0858, 3.2308, 8.4609

Achromatopsia

82.8665, -4.4215, 4.5023

Achromatomaly

82.3842, -1.6004, 5.9100

CSS Examples

Text

The CSS property to change the color of the text to HunterLab 82.0858, 3.2308, 8.4609 is called "color". The color property can be set on classes, ids or directly on the HTML element.

This example shows how text in the color `rgb(233, 209, 206)` looks like.

```
.text, #text, p{  
    color:rgb(233, 209, 206)  
}
```

If you want to add a text shadow in that color use the text-shadow property, you can generate a text shadow directly with our [CSS Text Shadow Generator](#).

Here you see how black text with a 4 pixel rgb(233, 209, 206) colored shadow looks like.

```
.shadow{ text-shadow: 4px 4px 2px rgb(233, 209, 206) }
```

Border

The CSS property to change the border of an element to HunterLab 82.0858, 3.2308, 8.4609 is called "border". The border property can be set on classes, ids or directly on the HTML element.

This example shows the color as border, it can be applied via the CSS property "border" or "border-color".

```
.border, #border, table{ border:4px solid rgb(233, 209, 206) }
```


If only the border color should be changed use the property `border-color`.

```
.border{ border-color:rgb(233, 209, 206) }
```

If you want to add a box shadow in that color use:

Here you see how a box with a 4 pixel `rgb(233, 209, 206)` colored shadow looks like.

```
.boxshadow{ -moz-box-shadow:4px 4px 4px  
4px rgb(233, 209, 206); -webkit-box-  
shadow:4px 4px 4px 4px rgb(233, 209, 206);  
box-shadow:4px 4px 4px 4px rgb(233, 209,  
206) }
```

Background

The CSS property to change the background color of an element to HunterLab 82.0858, 3.2308, 8.4609 is called "background". The background property can be set on classes, ids or directly on the HTML element.

```
.background, #background, body{  
background: rgb(233, 209, 206) }
```

If only the background color should be changed can be used:

```
.background{ background-color: rgb(233,  
209, 206) }
```

This example shows the color as background, it is applied via the CSS property "background".

To optimize and compress your CSS code, you can use our [online CSS compressor and optimizer](#) based on csstidy. If you want to create a linear or radial gradient as background or border, check our [CSS Gradient Generator](#).

Hey! You found this booklet interesting? Support Converting Colors with the new Membership Option!

The pro membership hides all ads, plus gives you double the colors in the color bucket, and more awesome pro features!

[Learn more, Memberships starting at \\$2.50/m!](#)

**Follow me
on Twitter!**

@ConvertingColor