

Converting Colors

HunterLab(82.0934, 5.3989,
3.7601)

Have a look what the booklet for
HunterLab(82.0934, 5.3989, 3.7601)
contains.

HunterLab(82.0934, 5.3989, 3.7601)	3
<i>Conversions</i>	4
<i>Details</i>	6
<i>Harmonies</i>	12
<i>Previews</i>	24
<i>Color Blindness Simulation</i>	28
<i>CSS Examples</i>	31

Color

**HunterLab(82.0934, 5.3989,
3.7601)**

Conversions

Conversions Part 1

Format	Color
Hex	E9D0D8
RGB	233, 208, 216
RGB Percent	91%, 82%, 85%
CMY	0.0863, 0.1843, 0.1529
CMYK	0.00, 0.11, 0.07, 0.09
HSL	341°, 36%, 86%
HSV	341°, 11%, 91%
XYZ	68.5548, 67.3933, 74.3608
YIQ	216.3870, 12.3320, 7.7880

Conversions

Conversions Part 2

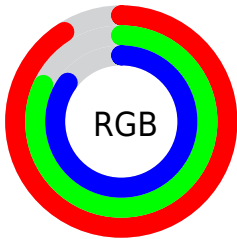
Format	Color
R _{YB}	233, 208, 216
Decimal	15323352
CIE Lab	85.70, 10.03, -0.78
CIE LCh	86, 10.061, 355.574
Yxy	67.3962, 0.3260, 0.3205
Android (android.graphics.Color)	4293513432 (0xFFE9D0D8)
YUV	216.3870, -0.1908, 14.5696
Hunter-Lab	82.0934, 5.3989, 3.7601

Details

The HunterLab color $82.0934, 5.3989, 3.7601$ is a light color, and the websafe version is hex `CCCCCC`. A complement of this color would be $87.8212, -13.9613, 5.7764$, and the grayscale version is $83.0324, -4.4304, 4.5113$.

A 20% lighter version of the original color is $100.0000, -5.3358, 5.4332$, and $59.1874, 5.3545, 2.7881$ is the 20% darker color. If you saturate the color by 10%, you get $74.8839, 15.1579, 3.0687$, and if you desaturate by 10%, it is $89.7020, -4.1324, 4.8156$.

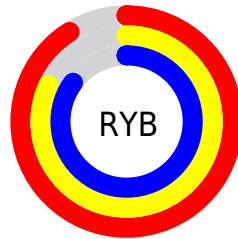
Distribution



Red (91%)

Green (82%)

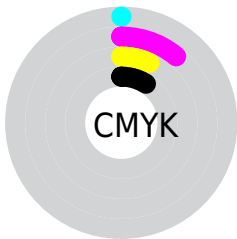
Blue (85%)



Red (91%)

Yellow (82%)

Blue (85%)

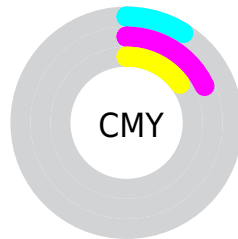


Cyan (0%)

Magenta (11%)

Yellow (7%)

Black (9%)



Cyan (9%)

Magenta (18%)

Yellow (15%)

Brightness & Saturation Gradients

These gradients show how the HunterLab color 82.0934, 5.3989, 3.7601 changes by changing the brightness by 10 percent. The first figure shows a shift by +10% for each color and the second figure -10%.

Similar to the brightness gradients but the following saturation gradients show a change of the HunterLab color 82.0934, 5.3989, 3.7601 by changing the saturation by 10% instead.

82.0934, 5.3989,
3.7601

82.0934, 5.3989,
3.7601

212.4509, 1.9393,
10.5954

70.2899, 5.5569,
3.1542

107.4653, 4.9203,
5.0766

59.1119, 5.6587,
2.5831

120.9789, 4.6119,
5.7813

48.5987, 5.6956,
2.0505

135.0158, 4.2606,
6.5156

38.7953, 5.6594,
1.5593

149.5571, 3.8691,
7.2784

29.7574, 5.5391,
1.1134

164.5859, 3.4394,
8.0686

21.5563, 5.3190,
0.7176

180.0870, 2.9734,

14.2882, 4.9764,

8.8854

0.3791

196.0462, 2.4729,
9.7279

7.9462, 5.0762,
0.0275

0.0000, NaN, NaN

82.0934, 5.3989,
3.7601

82.0934, 5.3989,
3.7601

74.8839, 15.1579,
3.0687

89.7020, -4.1324,
4.8156

68.1389, 25.1115,
2.8205

97.6478, -13.4292,
6.1638

61.9479, 35.1431,
3.1146

98.0122, -12.3215,
2.9483

56.4164, 45.0144,
4.0543

■ 51.6644, 54.3091,
5.7258

■ 47.8137, 62.4101,
8.1552

■ 44.9609, 68.5824,
11.2545

■ 43.1367, 72.2245,
14.7853

■ 42.2202, 73.4916,
18.0712

Harmonies

Analogous

The Analogous color harmony consists of three colors that are next to each other on the color wheel.



82.0952, 3.6759, -0.8577



82.0934, 5.3989, 3.7601



82.0952, 4.4456, 8.3098

Triad

The Triadic color harmony groups three colors that are evenly spaced from another and form a triangle on the color wheel.



82.0952, 5.3966, 3.7615



82.0952, -8.4835, 12.2787



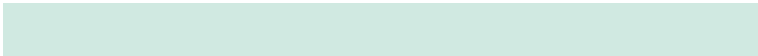
82.0952, -9.7362, -3.4176

Complementary

The Complementary color scheme is a pair of colors which are on the opposite of each other on the color wheel.



82.0934, 5.3989, 3.7601



87.8212, -13.9613, 5.7764

Split Complementary

Split-complementary colors differ from the complementary color scheme. The scheme consists of three colors, the original color and two neighbors of the complement color.



82.0952, -12.8571, 0.4325



82.0934, 5.3989, 3.7601



82.0952, -12.1460, 9.4604

Square

The Square scheme is like the rectangle color scheme, but the four colors are evenly spaced on the color wheel.



82.0952, 5.3966, 3.7615



82.0952, -3.6434, 13.0534



82.0952, -13.7287, 5.1696



82.0952, -5.1236, -5.1566

Rectangle

The Rectangle color scheme consists of four colors that form a rectangle on the color wheel.



82.0934, 5.3989, 3.7601



82.0952, 2.4363, 10.7201



82.0952, -13.7287, 5.1696



82.0952, -10.9902, -2.3166

Sweetspot

The Sweet Spot groups the original color and five complimentary colors.



82.0952, 5.3966, 3.7615



97.4090, -2.1867, 5.0365



81.8243, 5.6159, -5.3426



44.7482, -0.6204, 2.2834

0.0000, NaN, NaN



46.2646, -2.4686, 2.5136

Same Dimension

The Same Dimension uses a secret algorithm to generate beautiful new colors.



82.0952, 5.3966, 3.7615



89.0365, 8.4824, 3.9487



83.0969, 1.8901, 8.6564



38.9018, 1.9607, 1.8159



31.8346, 55.4747, 13.1529



9.0153, 15.8924, 2.3105

Inverse Universe

The Inverse Universe completely reimagines the original color for something new.



82.0952, 5.3966, 3.7615



89.0365, 8.4824, 3.9487



86.7418, -10.4337, 0.5734



38.9018, 1.9607, 1.8159



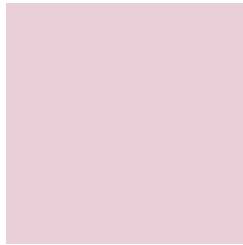
31.8346, 55.4747, 13.1529



9.0153, 15.8924, 2.3105

Previews

White Background



This preview shows how the HunterLab color 82.0934, 5.3989, 3.7601 looks on a white background.

Color Contrast Check

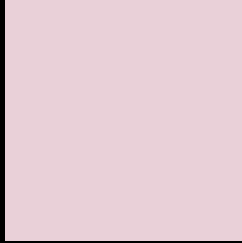
Large Text (above 18pt) WCAG AA × Fail

Any Text WCAG AA × Fail

Large Text (above 18pt) WCAG AAA × Fail

Any Text WCAG AAA × Fail

Black Background



This preview shows how the HunterLab color 82.0934, 5.3989, 3.7601 looks on a black background.

Color Contrast Check

Large Text (above 18pt) WCAG AA ✓ Pass

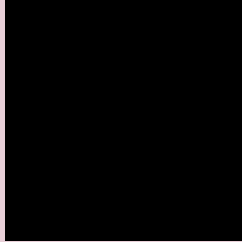
Any Text WCAG AA ✓ Pass

Large Text (above 18pt) WCAG AAA ✓ Pass

Any Text WCAG AAA ✓ Pass

If you want to check with other color combinations, try the [Color Contrast Checker](#).

HunterLab 82.0934, 5.3989, 3.7601 Background



This preview shows how black text looks on a background with the HunterLab color 82.0934, 5.3989, 3.7601.



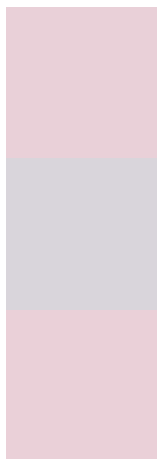
This preview shows how white text looks on a background with the HunterLab color 82.0934, 5.3989,

3.7601.

Color Blindness Simulation

Color vision deficiency is a very complex topic, and I could not describe the different causes any better than Wikipedia does, so if you want to learn more, you should check out their [article about color blindness](#).

Dichromacy



Original Color

82.0934, 5.3989, 3.7601

Protanopia

82.1308, -2.0350, 2.1930

Deuteranopia

82.1961, 5.7438, 3.8881



Tritanopia

82.1254, 7.4779, 0.3357

Trichromacy



Original Color

82.0934, 5.3989, 3.7601

Protanomaly

82.0600, 0.7885, 2.6543

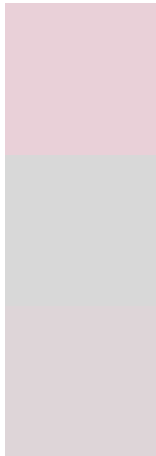
Deuteranomaly

82.1961, 5.7438, 3.8881

Tritanomaly

82.0277, 6.9564, 1.7256

Monochromacy



Original Color

82.0934, 5.3989, 3.7601

Achromatopsia

82.8665, -4.4215, 4.5023

Achromatomaly

82.5082, -0.9260, 4.1408

CSS Examples

Text

The CSS property to change the color of the text to HunterLab 82.0934, 5.3989, 3.7601 is called "color". The color property can be set on classes, ids or directly on the HTML element.

This example shows how text in the color `rgb(233, 208, 216)` looks like.

```
.text, #text, p{  
    color:rgb(233, 208, 216)  
}
```

If you want to add a text shadow in that color use the text-shadow property, you can generate a text shadow directly with our [CSS Text Shadow Generator](#).

Here you see how black text with a 4 pixel rgb(233, 208, 216) colored shadow looks like.

```
.shadow{ text-shadow: 4px 4px 2px rgb(233, 208, 216) }
```

Border

The CSS property to change the border of an element to HunterLab 82.0934, 5.3989, 3.7601 is called "border". The border property can be set on classes, ids or directly on the HTML element.

This example shows the color as border, it can be applied via the CSS property "border" or "border-color".

```
.border, #border, table{ border:4px solid rgb(233, 208, 216) }
```


If only the border color should be changed use the property `border-color`.

```
.border{ border-color:rgb(233, 208, 216) }
```

If you want to add a box shadow in that color use:

Here you see how a box with a 4 pixel `rgb(233, 208, 216)` colored shadow looks like.

```
.boxshadow{ -moz-box-shadow:4px 4px 4px  
4px rgb(233, 208, 216); -webkit-box-  
shadow:4px 4px 4px 4px rgb(233, 208, 216);  
box-shadow:4px 4px 4px 4px rgb(233, 208,  
216) }
```

Background

The CSS property to change the background color of an element to HunterLab 82.0934, 5.3989, 3.7601 is called "background". The background property can be set on classes, ids or directly on the HTML element.

```
.background, #background, body{  
background: rgb(233, 208, 216) }
```

If only the background color should be changed can be used:

```
.background{ background-color: rgb(233,  
208, 216) }
```

This example shows the color as background, it is applied via the CSS property "background".

To optimize and compress your CSS code, you can use our [online CSS compressor and optimizer](#) based on csstidy. If you want to create a linear or radial gradient as background or border, check our [CSS Gradient Generator](#).

Hey! You found this booklet interesting? Support Converting Colors with the new Membership Option!

The pro membership hides all ads, plus gives you double the colors in the color bucket, and more awesome pro features!

[Learn more, Memberships starting at \\$2.50/m!](#)

**Follow me
on Twitter!**

@ConvertingColor