

Converting Colors

HunterLab(82.2848, 4.7387,
7.0999)

Have a look what the booklet for
HunterLab(82.2848, 4.7387, 7.0999)
contains.

HunterLab(82.3812, 4.4076, 7.4264)	3
<i>Conversions</i>	4
<i>Details</i>	6
<i>Harmonies</i>	12
<i>Previews</i>	24
<i>Color Blindness Simulation</i>	28
<i>CSS Examples</i>	31

Color

**HunterLab(82.3812, 4.4076,
7.4264)**

Conversions

Conversions Part 1

Format	Color
Hex	EBD1D1
RGB	235, 209, 209
RGB Percent	92%, 82%, 82%
CMY	0.0784, 0.1804, 0.1804
CMYK	0.00, 0.11, 0.11, 0.08
HSL	0°, 39%, 87%
HSV	0°, 11%, 92%
XYZ	68.5701, 67.8666, 69.8072
YIQ	216.7740, 15.4960, 5.5120

Conversions

Conversions Part 2

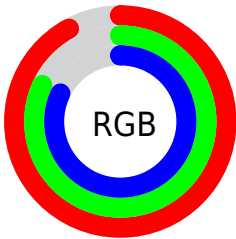
Format	Color
R _Y B	235, 209, 209
Decimal	15454673
CIE Lab	85.94, 9.04, 3.30
CIE LCh	86, 9.625, 20.078
Yxy	67.8696, 0.3325, 0.3291
Android (android.graphics.Color)	4293644753 (0xFFEBD1D1)
YUV	216.7740, -3.8326, 15.9842
Hunter-Lab	82.3812, 4.4076, 7.4264

Details

The HunterLab color $82.3812, 4.4076, 7.4264$ is a light color, and the websafe version is hex `FFCCCC`. A complement of this color would be $88.8643, -12.9003, 2.0915$, and the grayscale version is $83.2141, -4.4401, 4.5212$.

A 20% lighter version of the original color is $100.0000, -5.3358, 5.4332$, and $59.4920, 4.5881, 5.8339$ is the 20% darker color. If you saturate the color by 10%, you get $74.8985, 13.1773, 9.8289$, and if you desaturate by 10%, it is $90.2848, -3.9913, 5.1824$.

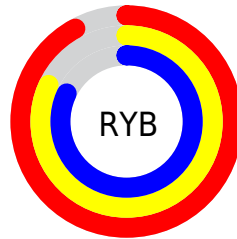
Distribution



Red (92%)

Green (82%)

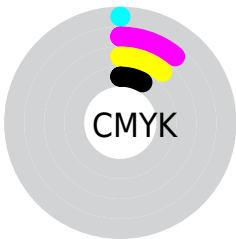
Blue (82%)



Red (92%)

Yellow (82%)

Blue (82%)

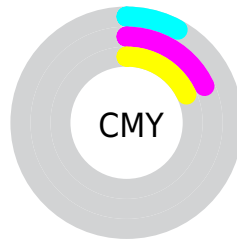


Cyan (0%)

Magenta (11%)

Yellow (11%)

Black (8%)



Cyan (8%)

Magenta (18%)

Yellow (18%)

Brightness & Saturation Gradients

These gradients show how the HunterLab color 82.3812, 4.4076, 7.4264 changes by changing the brightness by 10 percent. The first figure shows a shift by +10% for each color and the second figure -10%.

Similar to the brightness gradients but the following saturation gradients show a change of the HunterLab color 82.3812, 4.4076, 7.4264 by changing the saturation by 10% instead.

82.3812, 4.4076,
7.4264

82.3812, 4.4076,
7.4264

212.8459, 0.5988,
15.6606

70.5632, 4.6121,
6.6305

107.7802, 3.8416,
9.0960

59.3699, 4.7629,
5.8584

121.3064, 3.4920,
9.9661

48.8405, 4.8517,
5.1117

135.3555, 3.1011,
10.8595

39.0196, 4.8707,
4.3904

149.9086, 2.6712,
11.7758

29.9627, 4.8094,
3.6940

164.9488, 2.2043,
12.7145

21.7408, 4.6535,
3.0208

180.4609, 1.7022,

14.4491, 4.3811,

13.6752

2.3668

196.4308, 1.1666,
14.6573

■ 8.1101, 4.4241,
2.1303

0.0000, NaN, NaN

■ 82.3812, 4.4076,
7.4264

■ 82.3812, 4.4076,
7.4264

■ 74.8985, 13.1773,
9.8289

■ 90.2848, -3.9913,
5.1824

■ 67.9090, 22.3255,
12.3915

■ 98.1847, -11.7094,
3.1659

■ 61.5122, 31.7822,
15.1000

■ 55.8268, 41.3541,
17.8980

■ 50.9887, 50.6516,
20.6646

■ 47.1353, 59.0458,
23.1990

■ 44.3725, 65.7434,
25.2428

■ 42.7248, 70.0603,
26.5688

■ 42.0276, 71.9685,
27.1571

Harmonies

Analogous

The Analogous color harmony consists of three colors that are next to each other on the color wheel.



82.3830, 4.8439, 2.9645



82.3812, 4.4076, 7.4264



82.3830, 1.5775, 10.9076

Triad

The Triadic color harmony groups three colors that are evenly spaced from another and form a triangle on the color wheel.



82.3830, 4.4052, 7.4278



82.3830, -11.3265, 9.8967



82.3830, -5.9769, -4.5949

Complementary

The Complementary color scheme is a pair of colors which are on the opposite of each other on the color wheel.



82.3812, 4.4076, 7.4264



88.8643, -12.9003, 2.0915

Split Complementary

Split-complementary colors differ from the complementary color scheme. The scheme consists of three colors, the original color and two neighbors of the complement color.



82.3830, -10.2121, -2.5018



82.3812, 4.4076, 7.4264



82.3830, -13.2538, 5.9757

Square

The Square scheme is like the rectangle color scheme, but the four colors are evenly spaced on the color wheel.



82.3830, 4.4052, 7.4278



82.3830, -7.5296, 12.2758



82.3830, -12.8506, 1.4281



82.3830, -1.2233, -4.1513

Rectangle

The Rectangle color scheme consists of four colors that form a rectangle on the color wheel.



82.3812, 4.4076, 7.4264



82.3830, -1.2470, 12.2831



82.3830, -12.8506, 1.4281



82.3830, -7.5066, -4.1603

Sweetspot

The Sweet Spot groups the original color and five complimentary colors.



82.3830, 4.4052, 7.4278



97.3312, -2.6138, 6.1534



83.2239, 8.9085, -4.5563



44.7027, -0.8699, 2.9370

0.0000, NaN, NaN



46.2646, -2.4686, 2.5136

Same Dimension

The Same Dimension uses a secret algorithm to generate beautiful new colors.



82.3830, 4.4052, 7.4278



88.7083, 6.7186, 8.6605



86.3187, -2.3914, 11.7133



38.8001, 1.4099, 3.2753



31.3535, 53.6887, 20.2598



8.7867, 15.0420, 5.6777

Inverse Universe

The Inverse Universe completely reimagines the original color for something new.



88.8643, -12.9003, 2.0915



97.0786, -15.6439, 1.7645



84.7331, -6.2716, -2.8948



41.3781, -5.4710, 1.1536



60.3278, -31.9764, -6.3766



16.9055, -8.9610, -1.7863

Previews

White Background



This preview shows how the HunterLab color 82.3812, 4.4076, 7.4264 looks on a white background.

Color Contrast Check

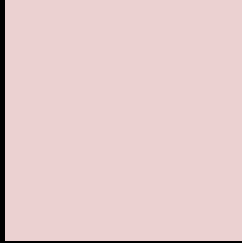
Large Text (above 18pt) WCAG AA × Fail

Any Text WCAG AA × Fail

Large Text (above 18pt) WCAG AAA × Fail

Any Text WCAG AAA × Fail

Black Background



This preview shows how the HunterLab color 82.3812, 4.4076, 7.4264 looks on a black background.

Color Contrast Check

Large Text (above 18pt) WCAG AA ✓ Pass

Any Text WCAG AA ✓ Pass

Large Text (above 18pt) WCAG AAA ✓ Pass

Any Text WCAG AAA ✓ Pass

If you want to check with other color combinations, try the [Color Contrast Checker](#).

HunterLab 82.3812, 4.4076, 7.4264 Background



This preview shows how black text looks on a background with the HunterLab color 82.3812, 4.4076, 7.4264.



This preview shows how white text looks on a background with the HunterLab color 82.3812, 4.4076,

7.4264.

Color Blindness Simulation

Color vision deficiency is a very complex topic, and I could not describe the different causes any better than Wikipedia does, so if you want to learn more, you should check out their [article about color blindness](#).

Dichromacy



Original Color

82.3812, 4.4076, 7.4264

Protanopia

82.4055, -3.1008, 5.9084

Deuteranopia

82.3968, 5.9862, 7.4719



Tritanopia

82.4366, 8.5135, 0.7359

Trichromacy



Original Color

82.3812, 4.4076, 7.4264

Protanomaly

82.3393, -0.2506, 6.3563

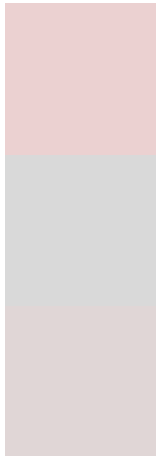
Deuteranomaly

82.2920, 5.6346, 7.3459

Tritanomaly

82.4661, 6.7744, 3.2453

Monochromacy



Original Color

82.3812, 4.4076, 7.4264

Achromatopsia

83.2990, -4.4446, 4.5258

Achromatomaly

82.9430, -1.1232, 5.6133

CSS Examples

Text

The CSS property to change the color of the text to HunterLab 82.3812, 4.4076, 7.4264 is called "color". The color property can be set on classes, ids or directly on the HTML element.

This example shows how text in the color `rgb(235, 209, 209)` looks like.

```
.text, #text, p{  
    color:rgb(235, 209, 209)  
}
```

If you want to add a text shadow in that color use the text-shadow property, you can generate a text shadow directly with our [CSS Text Shadow Generator](#).

Here you see how black text with a 4 pixel rgb(235, 209, 209) colored shadow looks like.

```
.shadow{ text-shadow: 4px 4px 2px rgb(235, 209, 209) }
```

Border

The CSS property to change the border of an element to HunterLab 82.3812, 4.4076, 7.4264 is called "border".

The border property can be set on classes, ids or directly on the HTML element.

This example shows the color as border, it can be applied via the CSS property "border" or "border-color".

```
.border, #border, table{ border:4px solid rgb(235, 209, 209) }
```


If only the border color should be changed use the property `border-color`.

```
.border{ border-color:rgb(235, 209, 209) }
```

If you want to add a box shadow in that color use:

Here you see how a box with a 4 pixel `rgb(235, 209, 209)` colored shadow looks like.

```
.boxshadow{ -moz-box-shadow:4px 4px 4px  
4px rgb(235, 209, 209); -webkit-box-  
shadow:4px 4px 4px 4px rgb(235, 209, 209);  
box-shadow:4px 4px 4px 4px rgb(235, 209,  
209) }
```

Background

The CSS property to change the background color of an element to HunterLab 82.3812, 4.4076, 7.4264 is called "background". The background property can be set on classes, ids or directly on the HTML element.

```
.background, #background, body{  
background: rgb(235, 209, 209) }
```

If only the background color should be changed can be used:

```
.background{ background-color: rgb(235,  
209, 209) }
```

This example shows the color as background, it is applied via the CSS property "background".

To optimize and compress your CSS code, you can use our [online CSS compressor and optimizer](#) based on csstidy. If you want to create a linear or radial gradient as background or border, check our [CSS Gradient Generator](#).

Hey! You found this booklet interesting? Support Converting Colors with the new Membership Option!

The pro membership hides all ads, plus gives you double the colors in the color bucket, and more awesome pro features!

[Learn more, Memberships starting at \\$2.50/m!](#)

**Follow me
on Twitter!**

@ConvertingColor