

Converting Colors

HunterLab(82.3274, 5.4103,
5.1327)

Have a look what the booklet for
HunterLab(82.3274, 5.4103, 5.1327)
contains.

HunterLab(82.2368, 5.7553, 4.9080)	3
<i>Conversions</i>	4
<i>Details</i>	6
<i>Harmonies</i>	12
<i>Previews</i>	24
<i>Color Blindness Simulation</i>	28
<i>CSS Examples</i>	31

Color

**HunterLab(82.2368, 5.7553,
4.9080)**

Conversions

Conversions Part 1

Format	Color
Hex	EBD0D6
RGB	235, 208, 214
RGB Percent	92%, 82%, 84%
CMY	0.0784, 0.1843, 0.1608
CMYK	0.00, 0.11, 0.09, 0.08
HSL	347°, 40%, 87%
HSV	347°, 11%, 92%
XYZ	68.9544, 67.6289, 73.0377
YIQ	216.7570, 14.1660, 7.5900

Conversions

Conversions Part 2

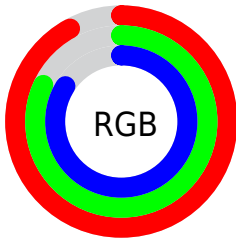
Format	Color
R _Y B	235, 208, 214
Decimal	15454422
CIE Lab	85.82, 10.39, 0.48
CIE LCh	86, 10.401, 2.637
Yxy	67.6319, 0.3289, 0.3226
Android (android.graphics.Color)	4293644502 (0xFFEBD0D6)
YUV	216.7570, -1.3592, 15.9991
Hunter-Lab	82.2368, 5.7553, 4.9080

Details

The HunterLab color $82.2368, 5.7553, 4.9080$ is a light color, and the websafe version is hex FFCCCC . A complement of this color would be $88.5920, -14.2657, 4.7272$, and the grayscale version is $83.1967, -4.4392, 4.5202$.

A 20% lighter version of the original color is $100.0000, -5.3358, 5.4332$, and $59.3280, 5.7047, 3.8776$ is the 20% darker color. If you saturate the color by 10%, you get $74.9176, 15.2798, 5.2325$, and if you desaturate by 10%, it is $89.9666, -3.5084, 4.9247$.

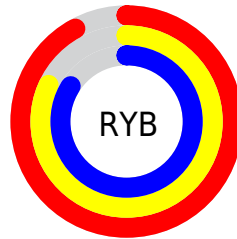
Distribution



Red (92%)

Green (82%)

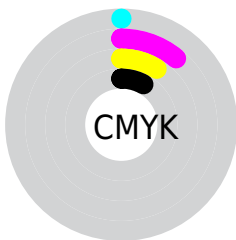
Blue (84%)



Red (92%)

Yellow (82%)

Blue (84%)

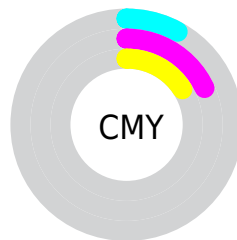


Cyan (0%)

Magenta (11%)

Yellow (9%)

Black (8%)



Cyan (8%)

Magenta (18%)

Yellow (16%)

Brightness & Saturation Gradients

These gradients show how the HunterLab color 82.2368, 5.7553, 4.9080 changes by changing the brightness by 10 percent. The first figure shows a shift by +10% for each color and the second figure -10%.

Similar to the brightness gradients but the following saturation gradients show a change of the HunterLab color 82.2368, 5.7553, 4.9080 by changing the saturation by 10% instead.

82.2368, 5.7553,
4.9080

82.2368, 5.7553,
4.9080

212.6478, 2.4145,
12.1700

70.4261, 5.8975,
4.2445

107.6222, 5.3062,
6.3319

59.2405, 5.9828,
3.6124

121.1421, 5.0117,
7.0870

48.7192, 6.0025,
3.0151

135.1850, 4.6740,
7.8698

38.9070, 5.9480,
2.4546

149.7322, 4.2955,
8.6794

29.8597, 5.8082,
1.9334

164.7667, 3.8785,
9.5150

21.6482, 5.5673,
1.4547

180.2733, 3.4249,

14.3683, 5.2023,

10.3758

1.0227

196.2379, 2.9364,
11.2610

8.0283, 5.2157,
0.6841

0.0000, NaN, NaN

82.2368, 5.7553,
4.9080

82.2368, 5.7553,
4.9080

74.9176, 15.2798,
5.2325

89.9666, -3.5084,
4.9247

68.0778, 25.0395,
5.9612

98.0407, -12.5083,
5.2182

61.8113, 34.9241,
7.1666

98.1847, -11.7094,
3.1659

56.2295, 44.6976,
8.9097

■ 51.4589, 53.9372,
11.2139

■ 47.6269, 62.0095,
14.0235

■ 44.8325, 68.1609,
17.1651

■ 43.1013, 71.7895,
20.3461

■ 42.3226, 73.0687,
22.7745

Harmonies

Analogous

The Analogous color harmony consists of three colors that are next to each other on the color wheel.



82.2386, 4.6039, 0.0202



82.2368, 5.7553, 4.9080



82.2386, 4.1286, 9.4046

Triad

The Triadic color harmony groups three colors that are evenly spaced from another and form a triangle on the color wheel.



82.2386, 5.7530, 4.9094



82.2386, -9.6741, 12.0328



82.2386, -8.9023, -4.3525

Complementary

The Complementary color scheme is a pair of colors which are on the opposite of each other on the color wheel.



82.2368, 5.7553, 4.9080



88.5920, -14.2657, 4.7272

Split Complementary

Split-complementary colors differ from the complementary color scheme. The scheme consists of three colors, the original color and two neighbors of the complement color.



82.2386, -12.5801, -0.7769



82.2368, 5.7553, 4.9080



82.2386, -13.0179, 8.6966

Square

The Square scheme is like the rectangle color scheme, but the four colors are evenly spaced on the color wheel.



82.2386, 5.7530, 4.9094



82.2386, -4.8483, 13.3558



82.2386, -14.0687, 4.0412



82.2386, -3.9356, -5.5185

Rectangle

The Rectangle color scheme consists of four colors that form a rectangle on the color wheel.



82.2368, 5.7553, 4.9080



82.2386, 1.7143, 11.6287



82.2386, -14.0687, 4.0412



82.2386, -10.3261, -3.3821

Sweetspot

The Sweet Spot groups the original color and five complimentary colors.



82.2386, 5.7530, 4.9094



97.3850, -2.3175, 5.3791



82.2932, 7.3251, -5.7908



44.7342, -0.6970, 2.4842

0.0000, NaN, NaN



46.2646, -2.4686, 2.5136

Same Dimension

The Same Dimension uses a secret algorithm to generate beautiful new colors.



82.2386, 5.7530, 4.9094



88.1127, 8.9755, 5.4392



84.2150, 0.9932, 9.8951



38.8701, 1.7903, 2.2677



31.5982, 54.6023, 16.6241



8.9340, 15.5939, 3.4923

Inverse Universe

The Inverse Universe completely reimagines the original color for something new.



82.2386, 5.7530, 4.9094



88.1127, 8.9755, 5.4392



86.4795, -9.5402, -0.7653



38.8701, 1.7903, 2.2677



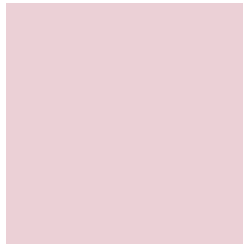
31.5982, 54.6023, 16.6241



8.9340, 15.5939, 3.4923

Previews

White Background



This preview shows how the HunterLab color 82.2368, 5.7553, 4.9080 looks on a white background.

Color Contrast Check

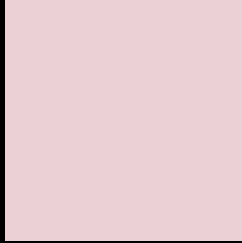
Large Text (above 18pt) WCAG AA × Fail

Any Text WCAG AA × Fail

Large Text (above 18pt) WCAG AAA × Fail

Any Text WCAG AAA × Fail

Black Background



This preview shows how the HunterLab color 82.2368, 5.7553, 4.9080 looks on a black background.

Color Contrast Check

Large Text (above 18pt) WCAG AA ✓ Pass

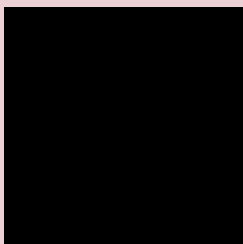
Any Text WCAG AA ✓ Pass

Large Text (above 18pt) WCAG AAA ✓ Pass

Any Text WCAG AAA ✓ Pass

If you want to check with other color combinations, try the [Color Contrast Checker](#).

HunterLab 82.2368, 5.7553, 4.9080 Background



This preview shows how black text looks on a background with the HunterLab color 82.2368, 5.7553, 4.9080.



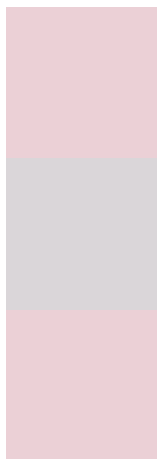
This preview shows how white text looks on a background with the HunterLab color 82.2368, 5.7553,

4.9080.

Color Blindness Simulation

Color vision deficiency is a very complex topic, and I could not describe the different causes any better than Wikipedia does, so if you want to learn more, you should check out their [article about color blindness](#).

Dichromacy



Original Color

82.2368, 5.7553, 4.9080

Protanopia

82.4672, -2.5767, 3.5746

Deuteranopia

82.2368, 5.7553, 4.9080



Tritanopia

82.3324, 8.1672, 0.6021

Trichromacy



Original Color

82.2368, 5.7553, 4.9080

Protanomaly

82.3967, 0.2550, 4.0297

Deuteranomaly

82.2368, 5.7553, 4.9080

Tritanomaly

82.2349, 7.6478, 1.9888

Monochromacy



Original Color

82.2368, 5.7553, 4.9080

Achromatopsia

83.2990, -4.4446, 4.5258

Achromatomaly

83.0050, -0.7863, 4.7289

CSS Examples

Text

The CSS property to change the color of the text to HunterLab 82.2368, 5.7553, 4.9080 is called "color". The color property can be set on classes, ids or directly on the HTML element.

This example shows how text in the color `rgb(235, 208, 214)` looks like.

```
.text, #text, p{  
    color:rgb(235, 208, 214)  
}
```

If you want to add a text shadow in that color use the text-shadow property, you can generate a text shadow directly with our [CSS Text Shadow Generator](#).

Here you see how black text with a 4 pixel rgb(235, 208, 214) colored shadow looks like.

```
.shadow{ text-shadow: 4px 4px 2px rgb(235, 208, 214) }
```

Border

The CSS property to change the border of an element to HunterLab 82.2368, 5.7553, 4.9080 is called "border".

The border property can be set on classes, ids or directly on the HTML element.

This example shows the color as border, it can be applied via the CSS property "border" or "border-color".

```
.border, #border, table{ border:4px solid rgb(235, 208, 214) }
```


If only the border color should be changed use the property border-color.

```
.border{ border-color:rgb(235, 208, 214) }
```

If you want to add a box shadow in that color use:

Here you see how a box with a 4 pixel rgb(235, 208, 214) colored shadow looks like.

```
.boxshadow{ -moz-box-shadow:4px 4px 4px  
4px rgb(235, 208, 214); -webkit-box-  
shadow:4px 4px 4px 4px rgb(235, 208, 214);  
box-shadow:4px 4px 4px 4px rgb(235, 208,  
214) }
```

Background

The CSS property to change the background color of an element to HunterLab 82.2368, 5.7553, 4.9080 is called "background". The background property can be set on classes, ids or directly on the HTML element.

```
.background, #background, body{  
background: rgb(235, 208, 214) }
```

If only the background color should be changed can be used:

```
.background{ background-color: rgb(235,  
208, 214) }
```

This example shows the color as background, it is applied via the CSS property "background".

To optimize and compress your CSS code, you can use our [online CSS compressor and optimizer](#) based on csstidy. If you want to create a linear or radial gradient as background or border, check our [CSS Gradient Generator](#).

Hey! You found this booklet interesting? Support Converting Colors with the new Membership Option!

The pro membership hides all ads, plus gives you double the colors in the color bucket, and more awesome pro features!

[Learn more, Memberships starting at \\$2.50/m!](#)

**Follow me
on Twitter!**

@ConvertingColor