

Converting Colors

HunterLab(82.3502, 1.4818,
17.3238)

Have a look what the booklet for
HunterLab(82.3502, 1.4818,
17.3238) contains.

HunterLab(82.3502, 1.4818, 17.3238)	3
<i>Conversions</i>	4
<i>Details</i>	6
<i>Harmonies</i>	12
<i>Previews</i>	24
<i>Color Blindness Simulation</i>	28
<i>CSS Examples</i>	31

Color

**HunterLab(82.3502, 1.4818,
17.3238)**

Conversions

Conversions Part 1

Format	Color
Hex	EED2BA
RGB	238, 210, 186
RGB Percent	93%, 82%, 73%
CMY	0.0667, 0.1764, 0.2706
CMYK	0.00, 0.12, 0.22, 0.07
HSL	28°, 60%, 83%
HSV	28°, 22%, 93%
XYZ	67.1695, 67.8156, 56.0039
YIQ	215.6360, 24.3920, -1.5280

Conversions

Conversions Part 2

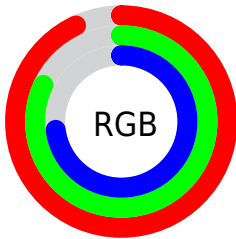
Format	Color
R _Y B	238, 231, 186
Decimal	15651514
CIE Lab	85.92, 6.08, 15.47
CIE LCh	86, 16.621, 68.559
Yxy	67.8186, 0.3517, 0.3551
Android (android.graphics.Color)	4293841594 (0xFFEED2BA)
YUV	215.6360, -14.6105, 19.6132
Hunter-Lab	82.3502, 1.4818, 17.3238

Details

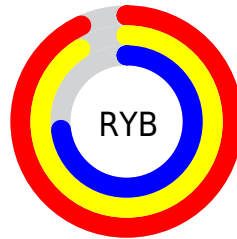
The HunterLab color $82.3502, 1.4818, 17.3238$ is a light color, and the websafe version is hex $FFCCCC$. A complement of this color would be $80.4386, -8.2251, -10.2004$, and the grayscale version is $82.7644, -4.4161, 4.4967$.

A 20% lighter version of the original color is $99.5946, -7.5613, 11.2284$, and $59.5109, 2.0770, 14.5988$ is the 20% darker color. If you saturate the color by 10%, you get $77.9828, 5.0104, 22.0801$, and if you desaturate by 10%, it is $86.8903, -1.6666, 11.9955$.

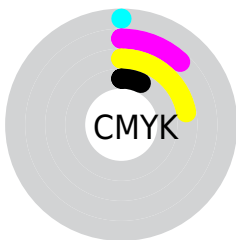
Distribution



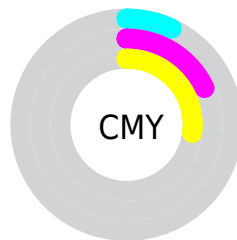
- Red (93%)
- Green (82%)
- Blue (73%)



- Red (93%)
- Yellow (91%)
- Blue (73%)



- Cyan (0%)
- Magenta (12%)
- Yellow (22%)
- Black (7%)



- Cyan (7%)
- Magenta (18%)
- Yellow (27%)

Brightness & Saturation Gradients


These gradients show how the HunterLab color 82.3502, 1.4818, 17.3238 changes by changing the brightness by 10 percent. The first figure shows a shift by +10% for each color and the second figure -10%.

Similar to the brightness gradients but the following saturation gradients show a change of the HunterLab color 82.3502, 1.4818, 17.3238 by changing the saturation by 10% instead.


 82.3502, 1.4818,
17.3238

 82.3502, 1.4818,
17.3238

212.8035, -3.3524,
29.9663

 70.5338, 1.8230,
15.9155

 107.7463, 0.6592,
20.1208

 59.3422, 2.1177,
14.4909

121.2712, 0.1889,
21.5151

 48.8144, 2.3586,
13.0425

135.3189, -0.3185,
22.9107

 38.9954, 2.5393,
11.5582


149.8708, -0.8612,
24.3096

 29.9406, 2.6517,
10.0197

164.9098, -1.4372,
25.7134

 21.7209, 2.6840,
8.3976

180.4206, -2.0453,

 14.4318, 2.6187,

27.1235

6.6642

196.3895, -2.6841,
28.5409

■ 8.0926, 2.8392,
5.6648

0.0000, NaN, NaN

■ 82.3502, 1.4818,
17.3238

■ 82.3502, 1.4818,
17.3238

■ 77.9828, 5.0104,
22.0801

■ 86.8903, -1.6666,
11.9955

■ 73.7989, 8.9524,
26.1910

■ 91.5829, -4.4552,
6.1548

■ 69.8184, 13.3239,
29.5831

■ 96.3361, -7.3597,
1.0067

■ 66.0610, 18.1326,
32.1811

■ 98.4466, -10.7826,
3.4955

■ 62.5474, 23.3679,
33.9166

■ 59.2983, 28.9921,
34.7423

■ 56.3330, 34.9296,
34.6561

■ 54.1301, 39.8867,
34.0530

Harmonies

Analogous

The Analogous color harmony consists of three colors that are next to each other on the color wheel.



82.3521, 8.3733, 13.3429



82.3502, 1.4818, 17.3238



82.3521, -6.7457, 18.0491

Triad

The Triadic color harmony groups three colors that are evenly spaced from another and form a triangle on the color wheel.



82.3521, 1.4792, 17.3250



82.3521, -19.5017, 2.2055



82.3521, 5.7219, -8.2085

Complementary

The Complementary color scheme is a pair of colors which are on the opposite of each other on the color wheel.



82.3502, 1.4818, 17.3238



80.4386, -8.2251, -10.2004

Split Complementary

Split-complementary colors differ from the complementary color scheme. The scheme consists of three colors, the original color and two neighbors of the complement color.



82.3521, -2.0248, -11.8747



82.3502, 1.4818, 17.3238



82.3521, -16.4365, -5.4865

Square

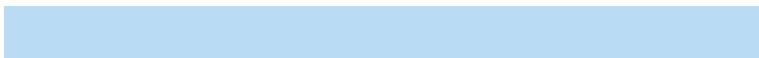
The Square scheme is like the rectangle color scheme, but the four colors are evenly spaced on the color wheel.



82.3521, 1.4792, 17.3250



82.3521, -18.6465, 9.8088



82.3521, -10.1158, -10.8324



82.3521, 10.8892, -1.2249

Rectangle

The Rectangle color scheme consists of four colors that form a rectangle on the color wheel.



82.3502, 1.4818, 17.3238



82.3521, -11.8440, 16.6630



82.3521, -10.1158, -10.8324



82.3521, 3.3213, -9.8995

Sweetspot

The Sweet Spot groups the original color and five complimentary colors.



82.3521, 1.4792, 17.3250



96.3973, -3.3029, 9.9920



76.2768, 18.7052, -2.4351



44.4557, -1.4431, 4.7992

0.0000, NaN, NaN



46.2646, -2.4686, 2.5136

Same Dimension

The Same Dimension uses a secret algorithm to generate beautiful new colors.



82.3521, 1.4792, 17.3250



87.0310, 3.1696, 21.0016



90.2047, -11.5306, 24.8475



41.1842, -1.1038, 4.9878



40.7426, 29.0325, 25.6136



12.5614, 6.4892, 7.8539

Inverse Universe

The Inverse Universe completely reimagines the original color for something new.



80.4386, -8.2251, -10.2004



84.5717, -9.2821, -14.3757



72.6887, 4.8976, -21.1029



40.7903, -3.1072, -0.6786



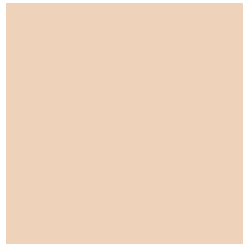
35.1258, 4.8820, -54.4431



11.0695, -0.2521, -13.2917

Previews

White Background



This preview shows how the HunterLab color 82.3502, 1.4818, 17.3238 looks on a white background.

Color Contrast Check

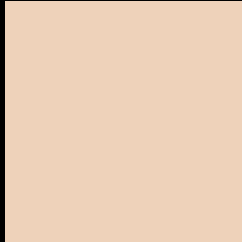
Large Text (above 18pt) WCAG AA × Fail

Any Text WCAG AA × Fail

Large Text (above 18pt) WCAG AAA × Fail

Any Text WCAG AAA × Fail

Black Background



This preview shows how the HunterLab color 82.3502, 1.4818, 17.3238 looks on a black background.

Color Contrast Check

Large Text (above 18pt) WCAG AA ✓ Pass

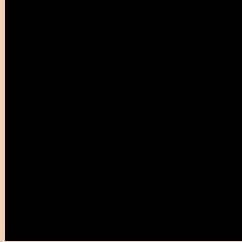
Any Text WCAG AA ✓ Pass

Large Text (above 18pt) WCAG AAA ✓ Pass

Any Text WCAG AAA ✓ Pass

If you want to check with other color combinations, try the [Color Contrast Checker](#).

HunterLab 82.3502, 1.4818, 17.3238 Background



This preview shows how black text looks on a background with the HunterLab color 82.3502, 1.4818, 17.3238.



This preview shows how white text looks on a background with the HunterLab color 82.3502, 1.4818,

Color Blindness Simulation

Color vision deficiency is a very complex topic, and I could not describe the different causes any better than Wikipedia does, so if you want to learn more, you should check out their [article about color blindness](#).

Dichromacy



Original Color

82.3502, 1.4818, 17.3238

Protanopia

82.2992, -4.8333, 16.3523

Deuteranopia

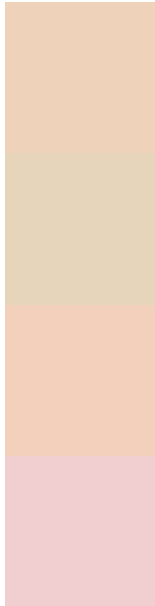
82.3446, 6.0950, 16.9961



Tritanopia

82.3167, 10.9913, 1.6445

Trichromacy



Original Color

82.3502, 1.4818, 17.3238

Protanomaly

82.4617, -2.7470, 16.9616

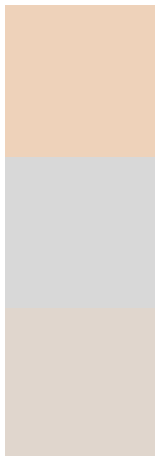
Deuteranomaly

82.3130, 4.4713, 16.9352

Tritanomaly

82.3896, 7.4185, 7.9544

Monochromacy



Original Color

82.3502, 1.4818, 17.3238

Achromatopsia

82.8665, -4.4215, 4.5023

Achromatomaly

82.6730, -2.5943, 9.4757

CSS Examples

Text

The CSS property to change the color of the text to HunterLab 82.3502, 1.4818, 17.3238 is called "color". The color property can be set on classes, ids or directly on the HTML element.

This example shows how text in the color `rgb(238, 210, 186)` looks like.

```
.text, #text, p{  
    color:rgb(238, 210, 186)  
}
```

If you want to add a text shadow in that color use the text-shadow property, you can generate a text shadow directly with our [CSS Text Shadow Generator](#).

Here you see how black text with a 4 pixel rgb(238, 210, 186) colored shadow looks like.

```
.shadow{ text-shadow: 4px 4px 2px rgb(238, 210, 186) }
```

Border

The CSS property to change the border of an element to HunterLab 82.3502, 1.4818, 17.3238 is called "border". The border property can be set on classes, ids or directly on the HTML element.

This example shows the color as border, it can be applied via the CSS property "border" or "border-color".

```
.border, #border, table{ border:4px solid rgb(238, 210, 186) }
```


If only the border color should be changed use the property `border-color`.

```
.border{ border-color:rgb(238, 210, 186) }
```

If you want to add a box shadow in that color use:

Here you see how a box with a 4 pixel `rgb(238, 210, 186)` colored shadow looks like.

```
.boxshadow{ -moz-box-shadow:4px 4px 4px 4px rgb(238, 210, 186); -webkit-box-shadow:4px 4px 4px 4px rgb(238, 210, 186); box-shadow:4px 4px 4px 4px rgb(238, 210, 186) }
```

Background

The CSS property to change the background color of an element to HunterLab 82.3502, 1.4818, 17.3238 is called "background". The background property can be set on classes, ids or directly on the HTML element.

```
.background, #background, body{  
background: rgb(238, 210, 186) }
```

If only the background color should be changed can be used:

```
.background{ background-color: rgb(238,  
210, 186) }
```

This example shows the color as background, it is applied via the CSS property "background".

To optimize and compress your CSS code, you can use our [online CSS compressor and optimizer](#) based on csstidy. If you want to create a linear or radial gradient as background or border, check our [CSS Gradient Generator](#).

Hey! You found this booklet interesting? Support Converting Colors with the new Membership Option!

The pro membership hides all ads, plus gives you double the colors in the color bucket, and more awesome pro features!

[Learn more, Memberships starting at \\$2.50/m!](#)

**Follow me
on Twitter!**

@ConvertingColor